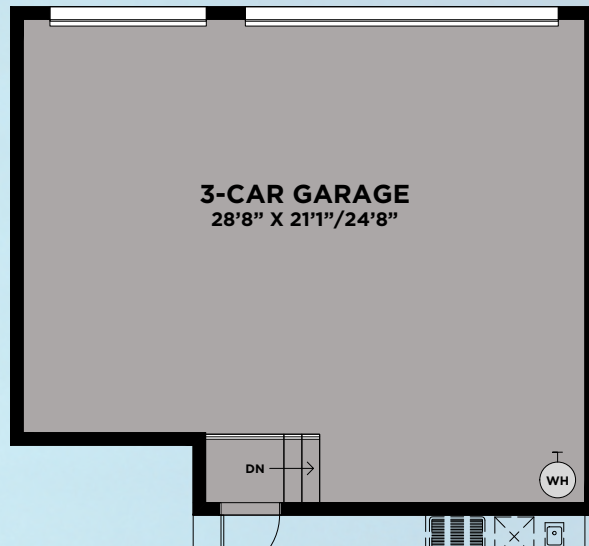
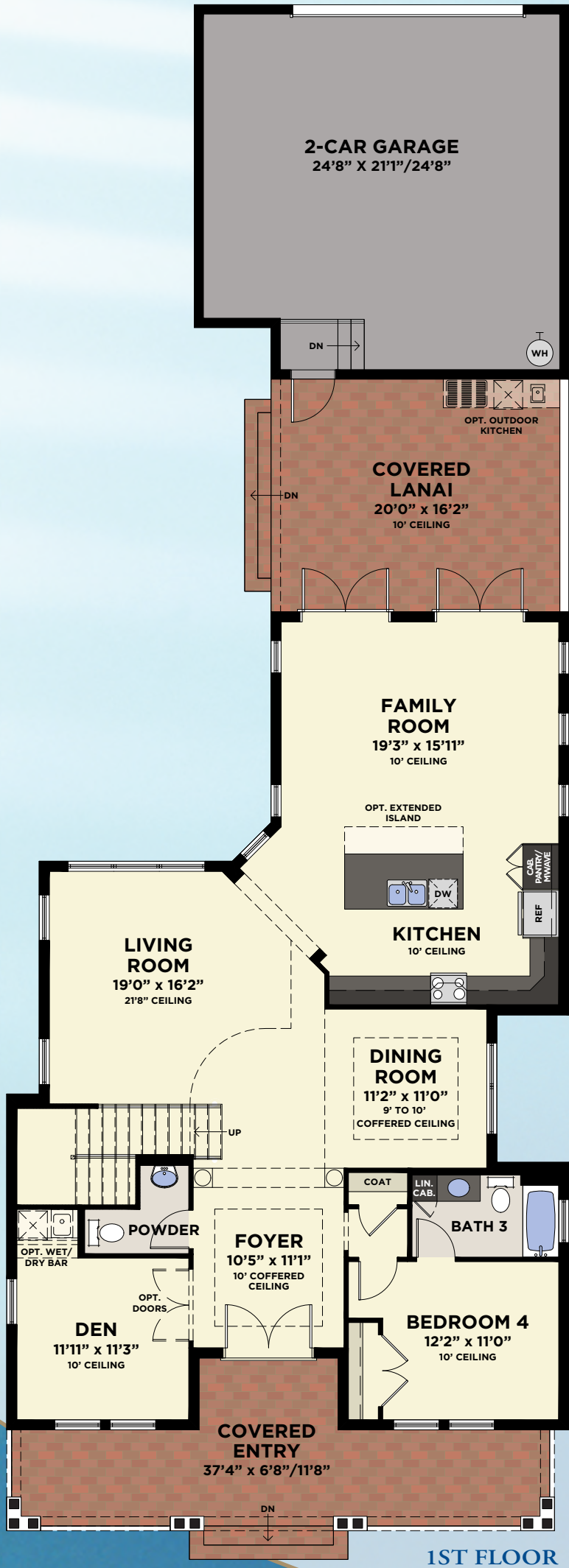


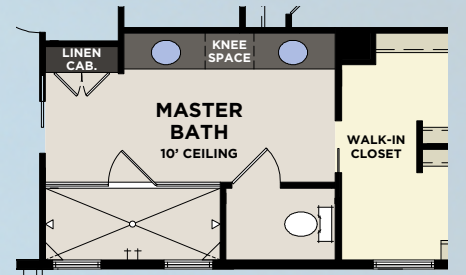
SALVEO COLLECTION  
**MANSFIELD**

4 BEDROOMS, DEN, 3.5 BATHS, 2-CAR GARAGE



**MANSFIELD**

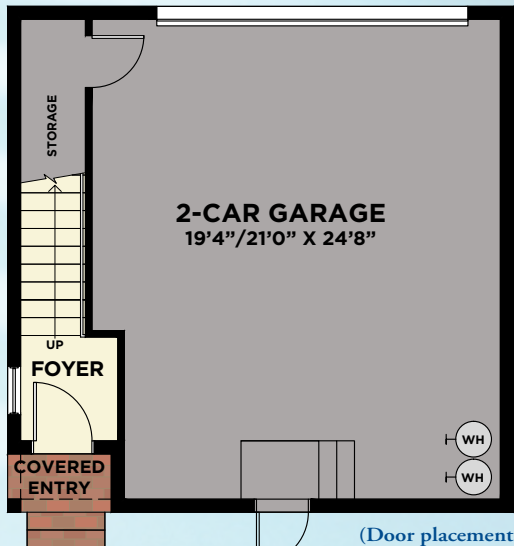
|                   |       |
|-------------------|-------|
| First Floor       | 1,766 |
| Second Floor      | 1,162 |
| Total A/C Sq. Ft. | 2,928 |
| 2-Car Garage      | 657   |
| Covered Entry     | 301   |
| Covered Lanais    | 334   |
| Covered Deck      | 90    |
| Total Sq. Ft.     | 4,310 |



# AVAILABLE SINGLE-FAMILY 2ND FLOOR RETREAT

## 2-CAR GARAGE (COURTYARD ENTRY)

WITH SECOND FLOOR BONUS ROOM OR SUITE



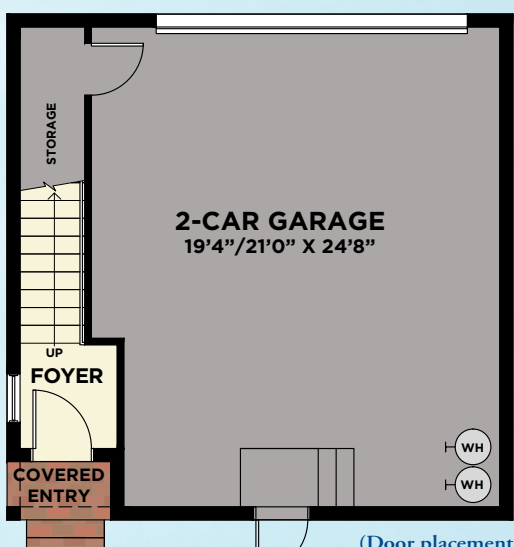
LOWER FLOOR

(Door placement varies per plan)



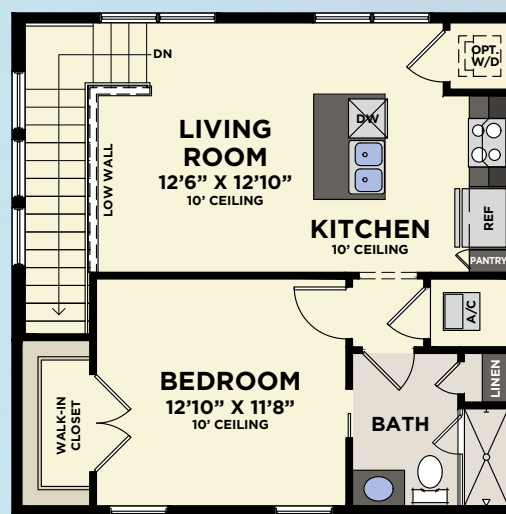
SECOND FLOOR  
W/BONUS ROOM

\*Window included at select configurations



LOWER FLOOR

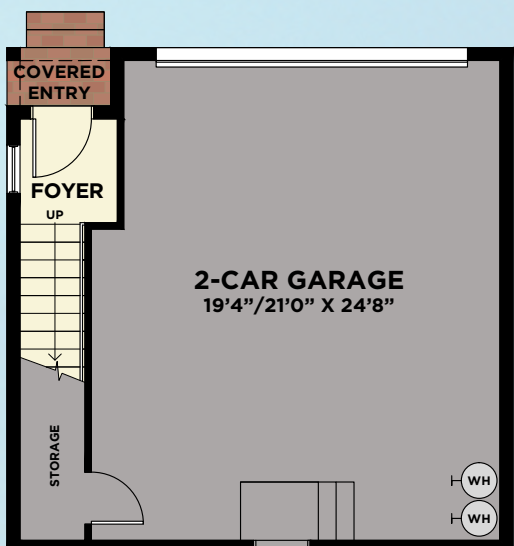
(Door placement varies per plan)



SECOND FLOOR  
W/SUITE

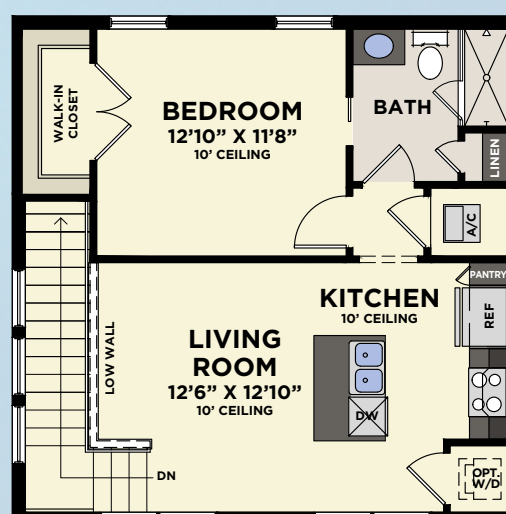
\*Window included at select configurations

## 2-CAR GARAGE (DRIVEWAY ENTRY) WITH SECOND FLOOR SUITE



LOWER FLOOR

(Door placement varies per plan)



SECOND FLOOR  
W/SUITE

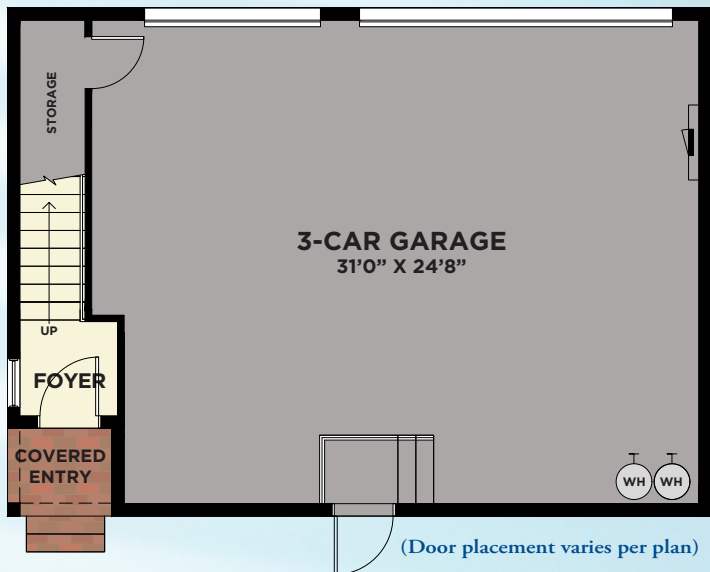
\*Window included at select configurations

|                      |              |
|----------------------|--------------|
| Total A/C Sq. Ft.    | 720          |
| 2-Car Garage         | 548          |
| Storage              | 68           |
| Covered Entry        | 16           |
| <b>Total Sq. Ft.</b> | <b>1,352</b> |

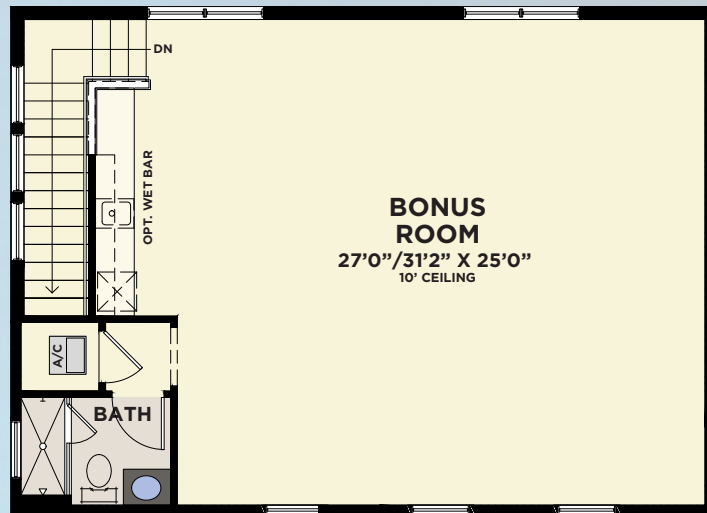
# AVAILABLE SINGLE-FAMILY 2ND FLOOR RETREAT

## 3-CAR GARAGE (COURTYARD ENTRY)

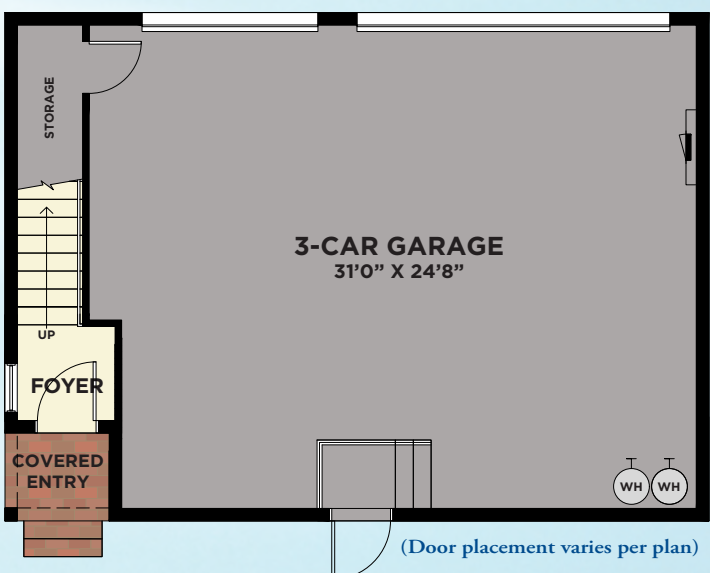
WITH SECOND FLOOR BONUS ROOM OR SUITE



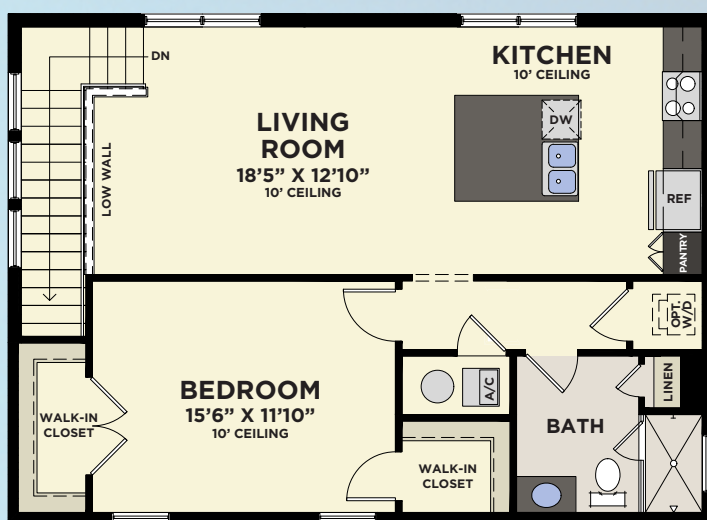
LOWER FLOOR



SECOND FLOOR  
W/BONUS ROOM



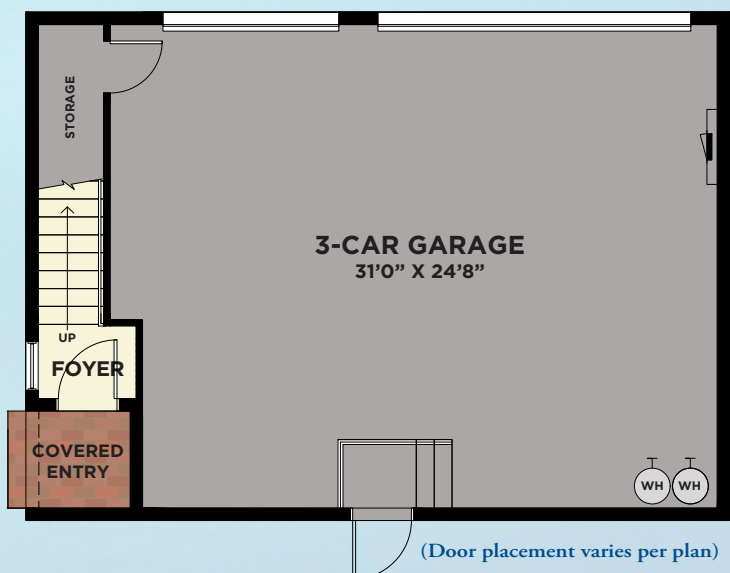
LOWER FLOOR



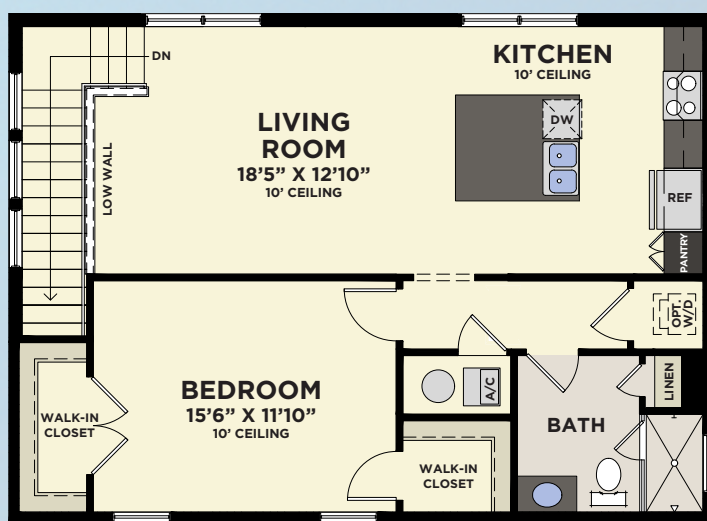
SECOND FLOOR  
W/SUITE

## 3-CAR GARAGE (SIDEYARD ENTRY)

WITH SECOND FLOOR SUITE



LOWER FLOOR



SECOND FLOOR  
W/SUITE

|                      |              |
|----------------------|--------------|
| Total A/C Sq. Ft.    | 965          |
| 3-Car Garage         | 809          |
| Storage              | 55           |
| Covered Entry        | 19           |
| <b>Total Sq. Ft.</b> | <b>1,848</b> |