



MARINA WALK ON ONE PARTICULAR HARBOUR



HOME DESIGNS



SITE PLAN & AMENITIES



© Minto Communities, LLC 2017. All rights reserved. Content may not be reproduced, copied, altered, distributed, stored or transferred in any form or by any means without express written permission. Artist's renderings, dimensions, specifications, prices and features are approximate and subject to change without notice.

ORAL REPRESENTATIONS CANNOT BE RELIED UPON AS CORRECTLY STATING REPRESENTATIONS OF THE DEVELOPER. FOR CORRECT REPRESENTATIONS, MAKE REFERENCE TO THIS BROCHURE AND TO THE DOCUMENTS REQUIRED BY SECTION 718.503, FLORIDA STATUTES, TO BE FURNISHED BY A DEVELOPER TO A BUYER OR LESSEE.



Minto, the Minto logo, One Particular Harbour and the One Particular Harbour logo are trademarks of Minto Communities, LLC, and/or its affiliates. CGC1519880. 5/17



NAUTICAL SERIES

MARINER

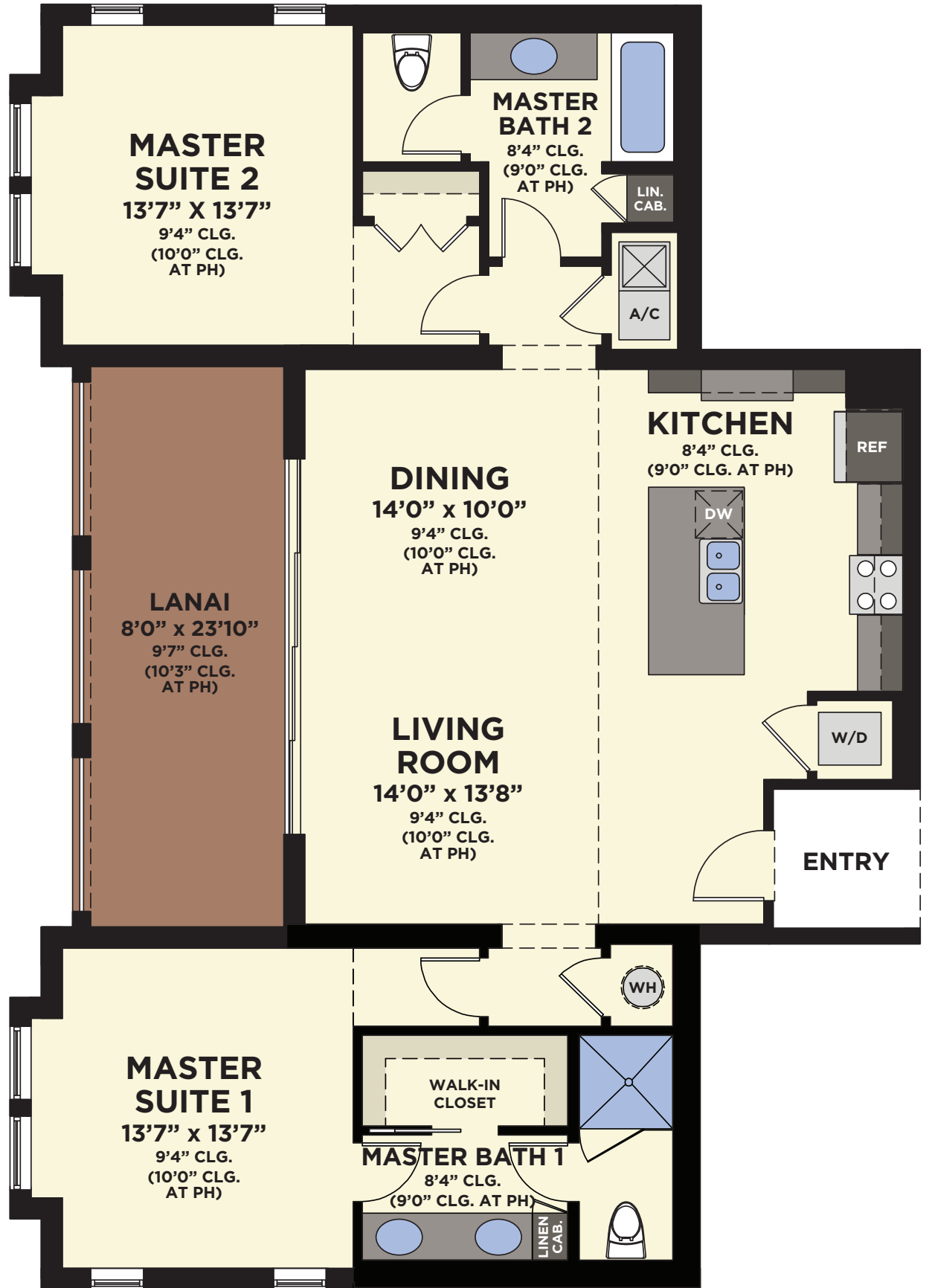
2 BEDROOMS, 2 BATHS, LANAI



PENTHOUSE WINDOW VARIATION

MARINER PENTHOUSE

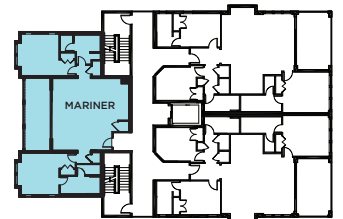
Total Living Area	1,457 S.F.
Entry	36 S.F.
Lanai	216 S.F.
Total Sq. Ft.	1,709 S.F.



FLOORPLAN

MARINER

Total Living Area	1,483 S.F.
Entry	36 S.F.
Lanai	216 S.F.
Total Sq. Ft.	1,735 S.F.

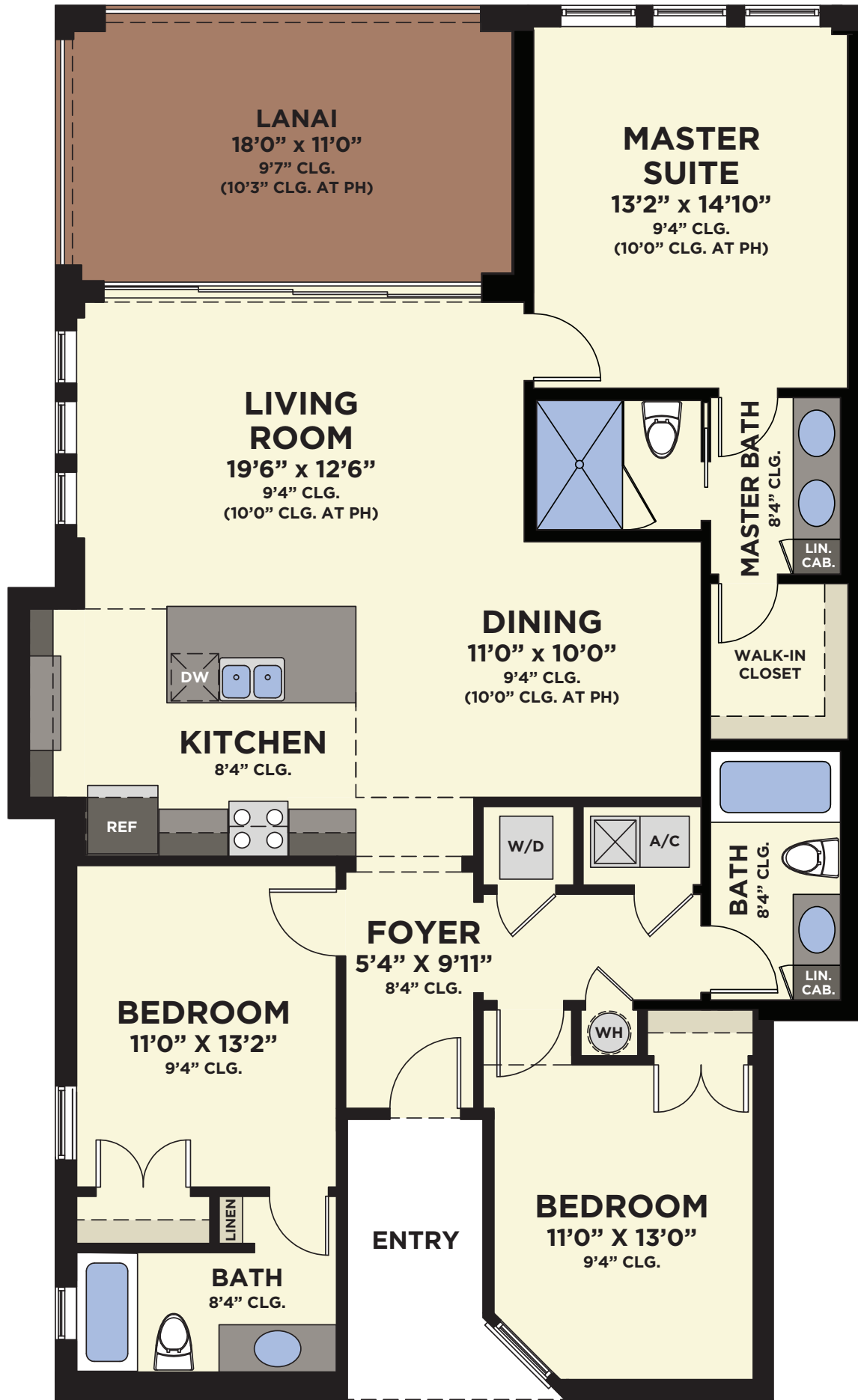




NAUTICAL SERIES

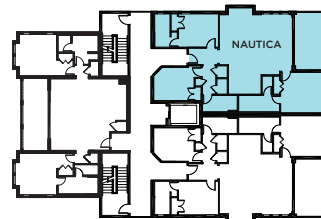
NAUTICA

3 BEDROOMS, 3 BATHS, LANAI



FLOORPLAN

NAUTICA	
Total Living Area	1,650 S.F.
Entry	72 S.F.
Lanai	225 S.F.
<hr/> Total Sq. Ft.	<hr/> 1,947 S.F.

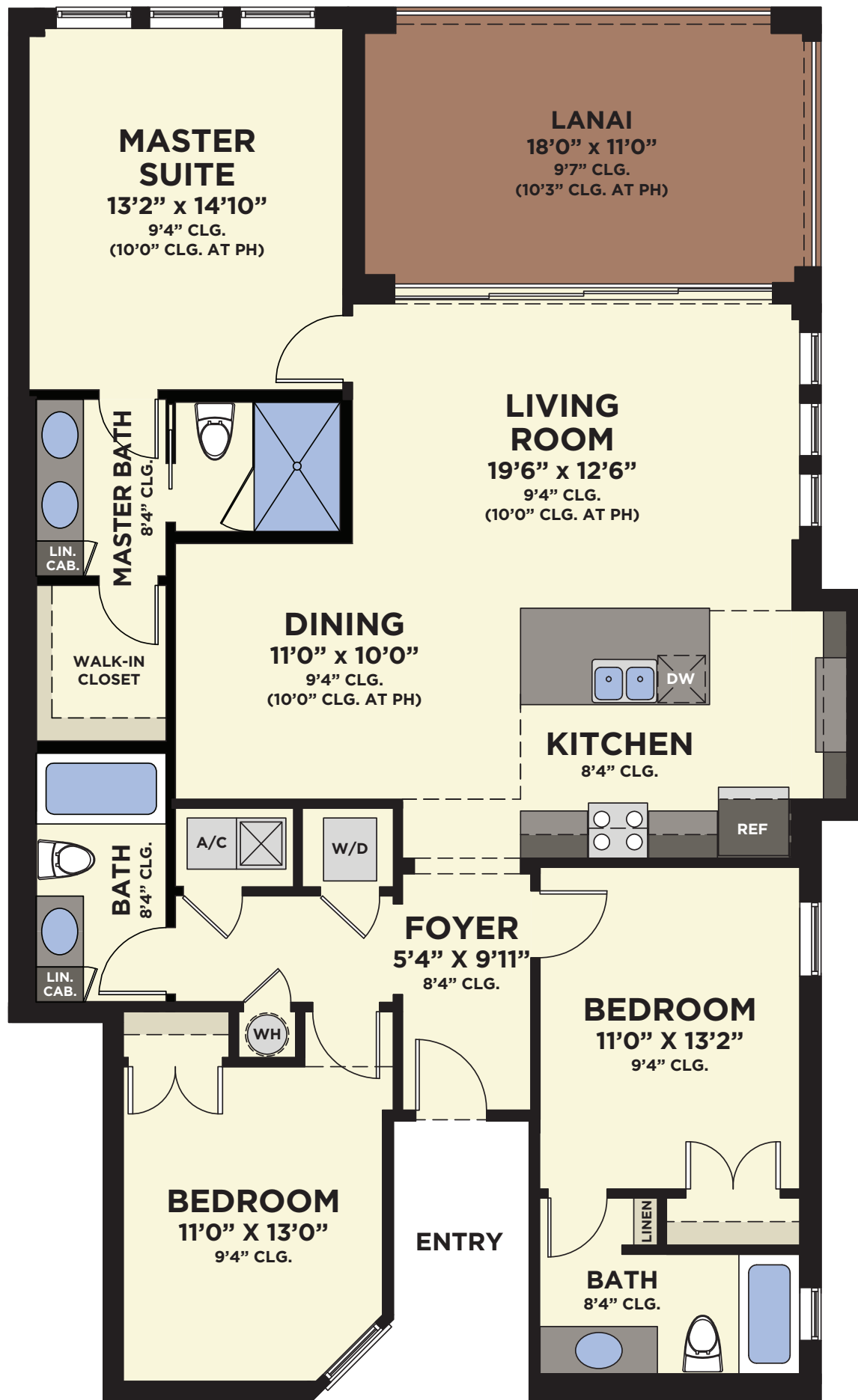




NAUTICAL SERIES

OCEANA

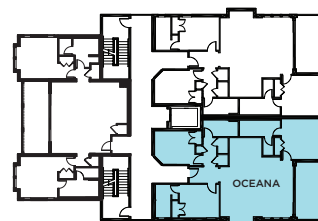
3 BEDROOMS, 3 BATHS, LANAI



FLOORPLAN

OCEANA

Total Living Area	1,650 S.F.
Entry	72 S.F.
Lanai	225 S.F.
Total Sq. Ft.	1,947 S.F.





ANNA MARIA SOUND, FL

(941) 896-4826
OPHMintoUSA.com

12300 Manatee Avenue West | Bradenton, FL 34209
On SR-64 West, just before the Anna Maria Island Bridge

INTRACOASTAL WATERWAY
Project Depth
9 feet Caloosahatchee River, Fla. to Anclote River, Fla.
The controlling depths are published periodically in the U.S. Coast Guard Local Notice to Mariners.

Distances
The Waterway is indicated by a magenta line. Mileage distances shown along waterway are in Statute Miles, based on zero at the junction with the Okeechobee Waterway in San Carlos Bay, Florida.
Tables for converting Statute Miles to International Nautical Miles are given in U.S. Coast Pilot 5.



PALMA SOLA BAY