

# *Courtyard Home Collection*



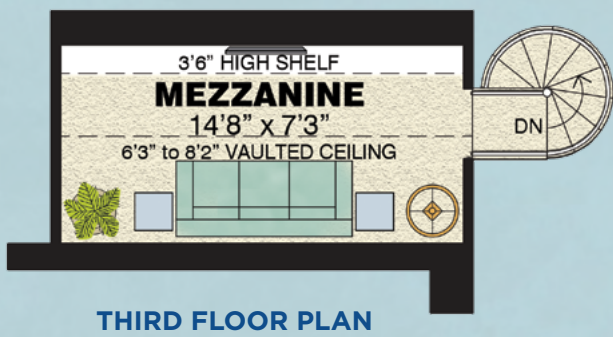
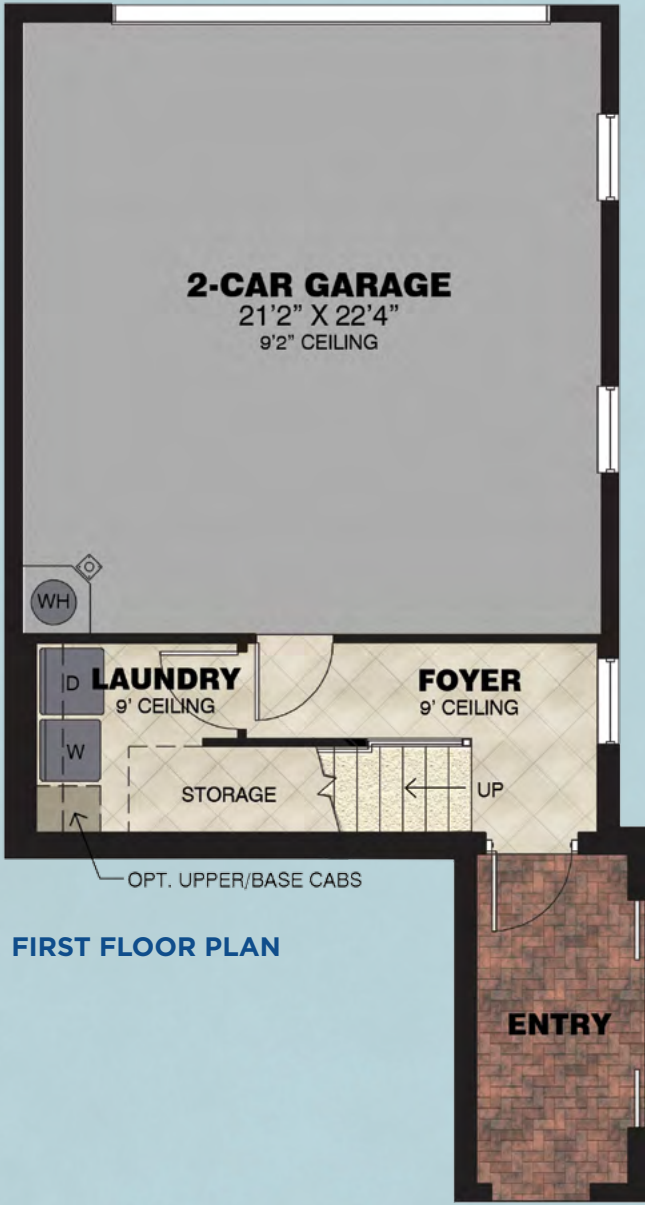
Artesia®



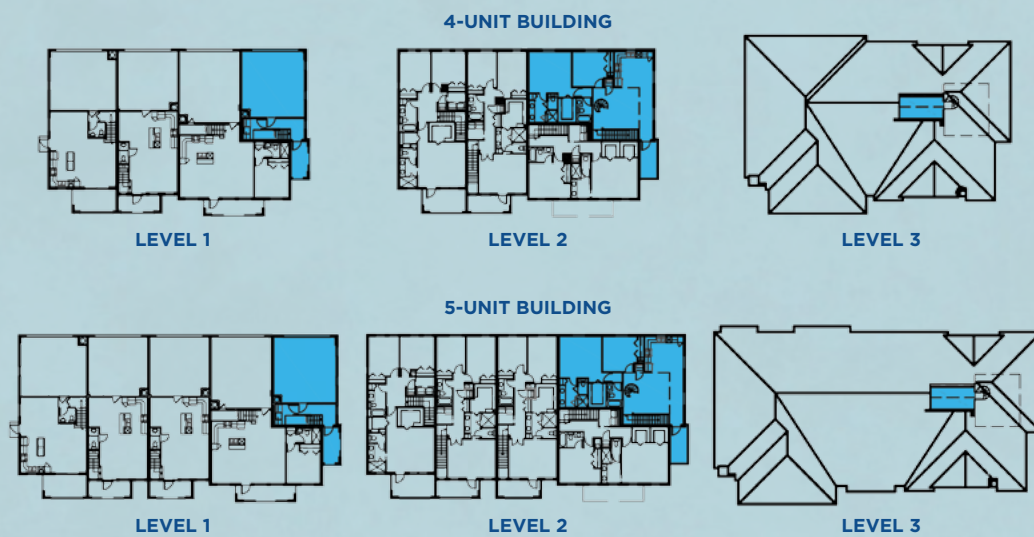
COURTYARD HOMES

Avila

2 Bedrooms + Mezzanine, 2 Baths, 2-Car Garage



First Floor	172 S.F.
Second Floor	1,164 S.F.
Third Floor	130 S.F.
<b>Total Living Area</b>	<b>1,466 S.F.</b>
2-Car Garage	508 S.F.
Entry	79 S.F.
Balcony	79 S.F.
<b>Total</b>	<b>2,132 S.F.</b>

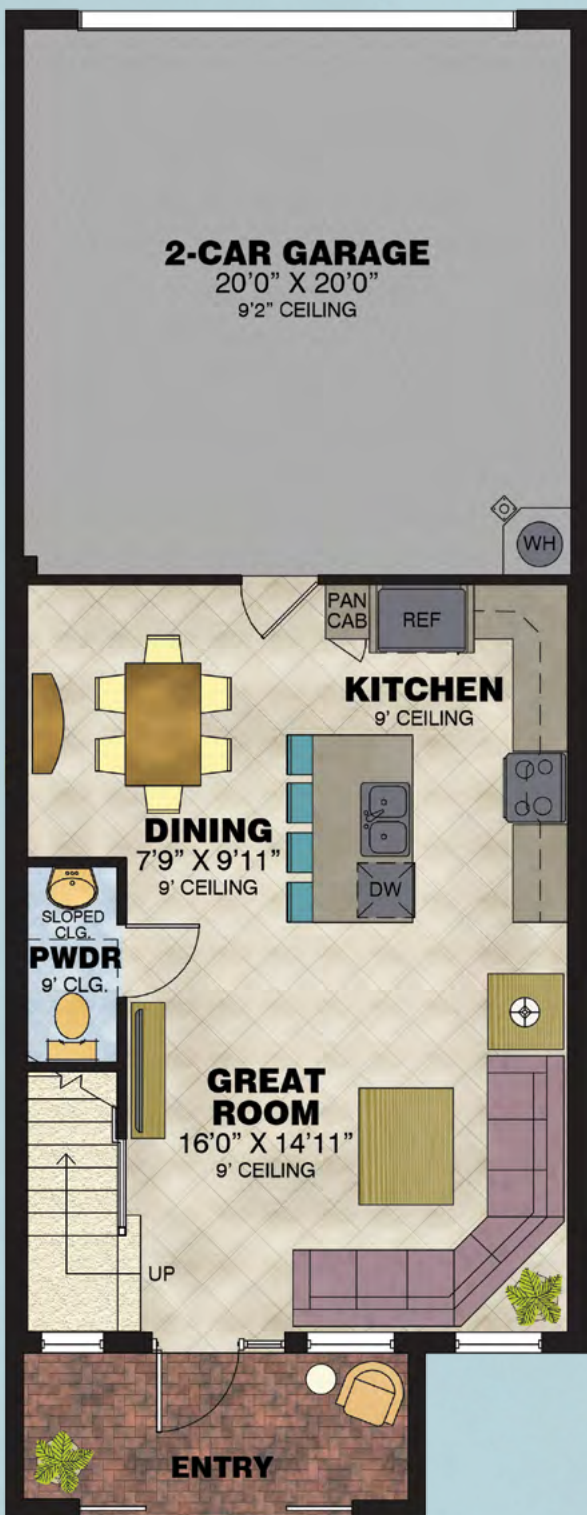




COURTYARD HOMES

*Escala*

3 Bedrooms, 2 1/2 Baths, 2-Car Garage

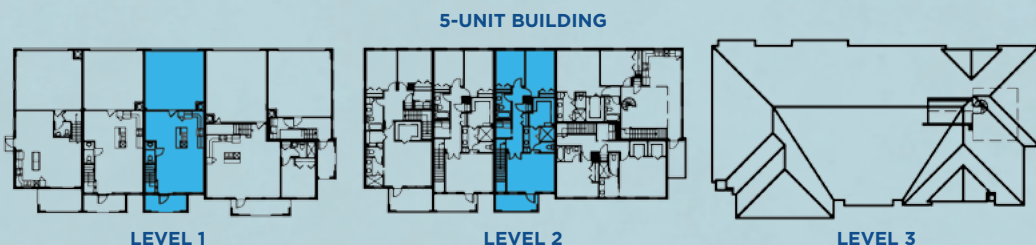


FIRST FLOOR PLAN



SECOND FLOOR PLAN

First Floor	581 S.F.
Second Floor	962 S.F.
Total Living Area	1,543 S.F.
2-Car Garage	430 S.F.
Entry	90 S.F.
Balcony	90 S.F.
Total	2,153 S.F.

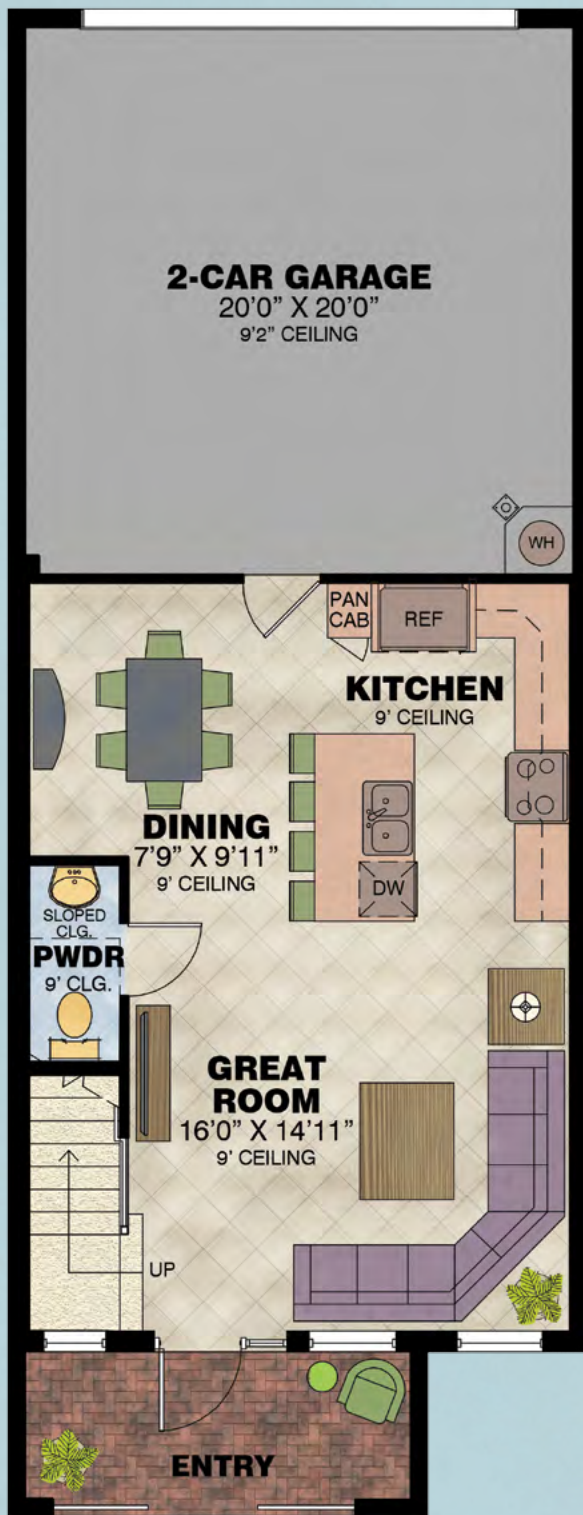




COURTYARD HOMES

Castilla

3 Bedrooms, 2 1/2 Baths, 2-Car Garage

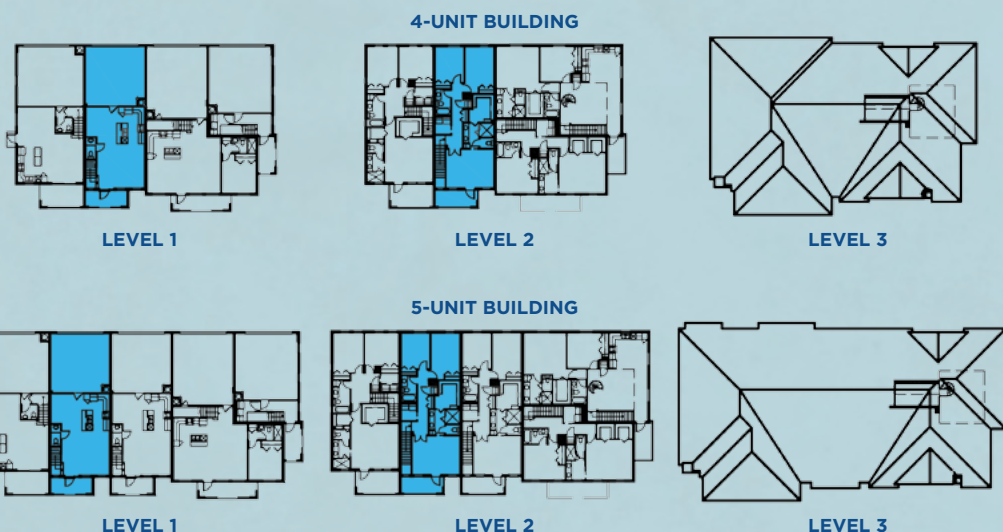


FIRST FLOOR PLAN



SECOND FLOOR PLAN

First Floor	581 S.F.
Second Floor	962 S.F.
Total Living Area	1,543 S.F.
2-Car Garage	430 S.F.
Entry	90 S.F.
Balcony	90 S.F.
Total	2,153 S.F.





COURTYARD HOMES

*Dorada*

3 Bedrooms, 2 1/2 Baths, 2-Car Garage



FIRST FLOOR PLAN



SECOND FLOOR PLAN

First Floor	614 S.F.
Second Floor	1,041 S.F.
Total Living Area	1,655 S.F.
2-Car Garage	481 S.F.
Entry	121 S.F.
Balcony	121 S.F.
Total	2,378 S.F.

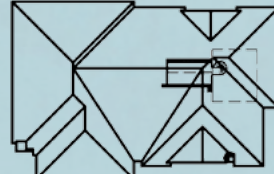
4-UNIT BUILDING



LEVEL 1

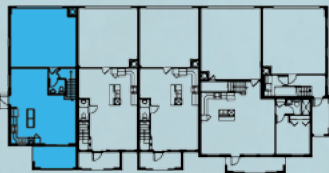


LEVEL 2

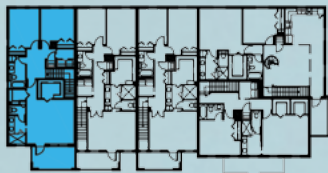


LEVEL 3

5-UNIT BUILDING



LEVEL 1



LEVEL 2



LEVEL 3



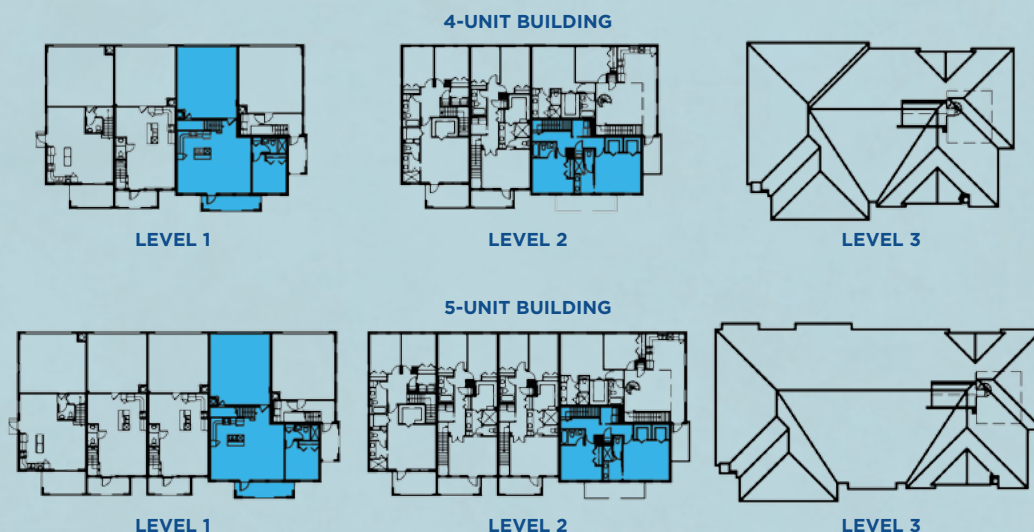
COURTYARD HOMES

*Barcelona*

3 Bedrooms, 3 Baths, 2-Car Garage



First Floor	882 S.F.
Second Floor	843 S.F.
Total Living Area	1,725 S.F.
2-Car Garage	517 S.F.
Entry	109 S.F.
Total	2,351 S.F.



# Artesia<sup>®</sup>

**mintofla.com**

12550 N.W. 29TH MANOR, SUNRISE, FL 33323  
(844) 309-6911



© Minto Communities, LLC 2016. All rights reserved. Content may not be reproduced, copied, altered, distributed, stored or transferred in any form or by any means without express written permission. Artist's renderings, dimensions, specifications, prices and features are approximate and subject to change without notice. Minto, the Minto logo, Artesia and the Artesia logo are trademarks of Minto Communities, LLC, and/or its affiliates. CGC1519880. 9/16

