

YORK REGION

UPDATE TO CLC MEMBERS

Community Liaison Committee
December 18, 2018



Agenda

1. Introductions and Purpose
2. Planning updates
3. Construction Updates
4. Seniors Hub/Community Centre Update
5. Next steps and next meetings

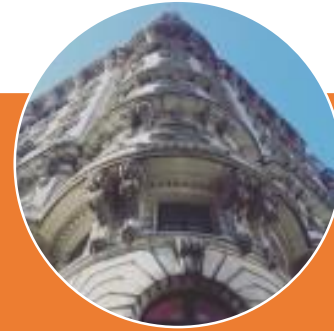
INTRODUCTIONS

PLANNING UPDATES

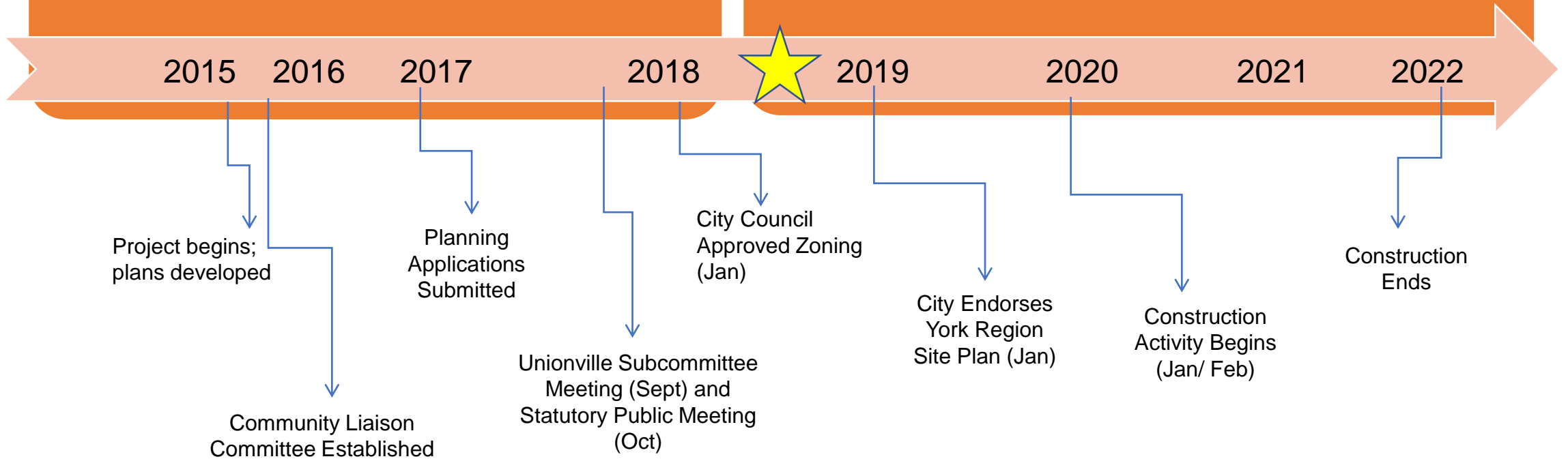
Timeline



PLANNING



CONSTRUCTION

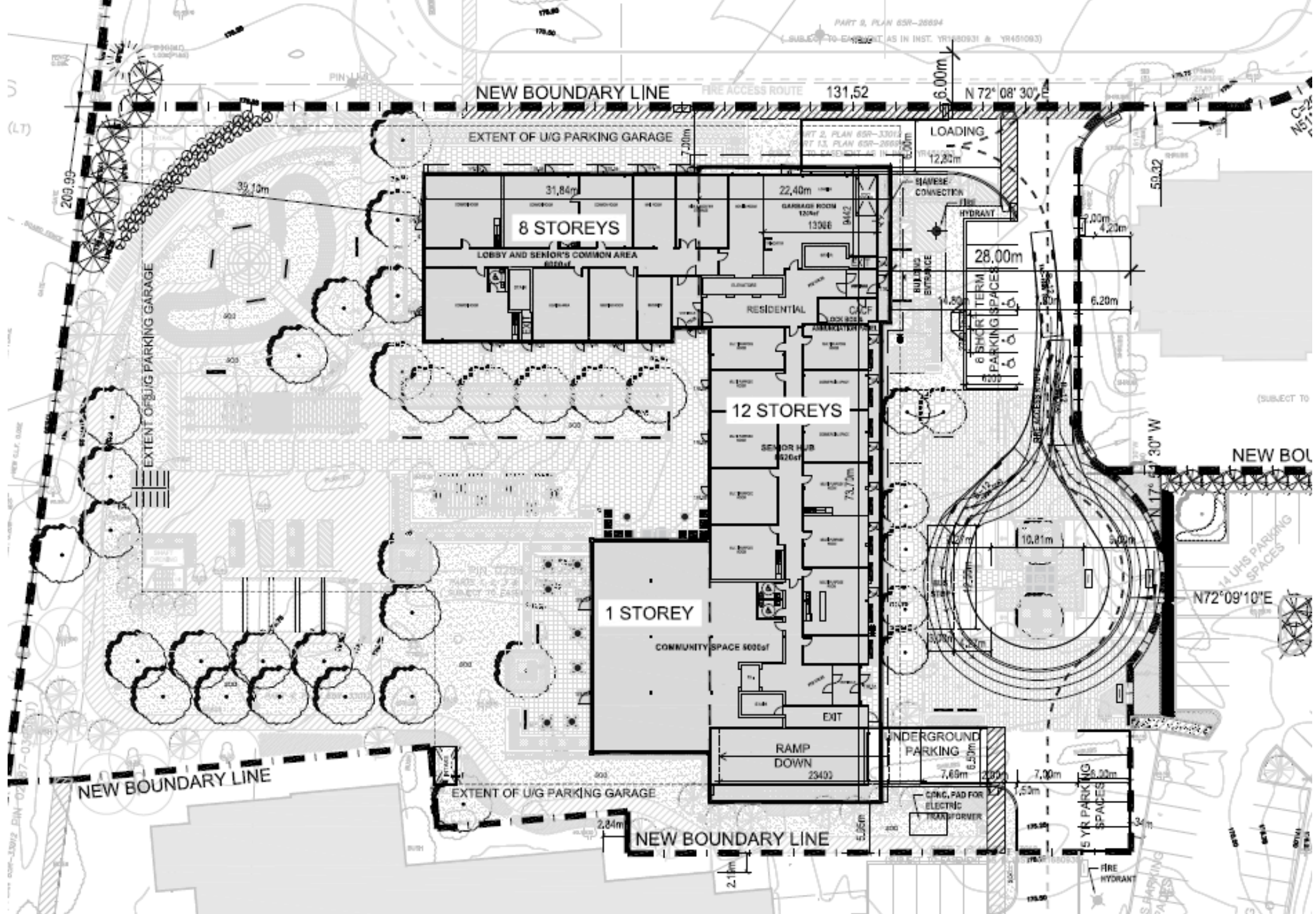


Master Plan



Recent Landscape Plan





NEW BOUNDARY LINE

EXTENT OF U/G PARKING GARAGE

8 STOREYS

LOBBY AND SENIOR'S COMMON AREA

12 STOREYS

1 STOREY

COMMUNITY SPACE

RAMP DOWN

UNDERGROUND PARKING

NEW BOUNDARY LINE

EXTENT OF U/G PARKING GARAGE

LOADING

SAVING CONNECTION

HYDRANT

BUILDING ENTRANCE

6 SHORT TERM PARKING SPACES

NEW BOUNDARY LINE

14 U/GS PARKING SPACES

N 72° 09' 10" E

FIRE HYDRANT

5 U/GS PARKING SPACES

Walking Paths



Bus Route



Recent Elevations (Not final)



Recent Elevations (Not final)

COMBINATION OF BRICK PATTERN COLOUR ON PRECAST + MULLION + SPANDREL:



ARCHITECTURAL BLOCK:



VISUAL GLASS:

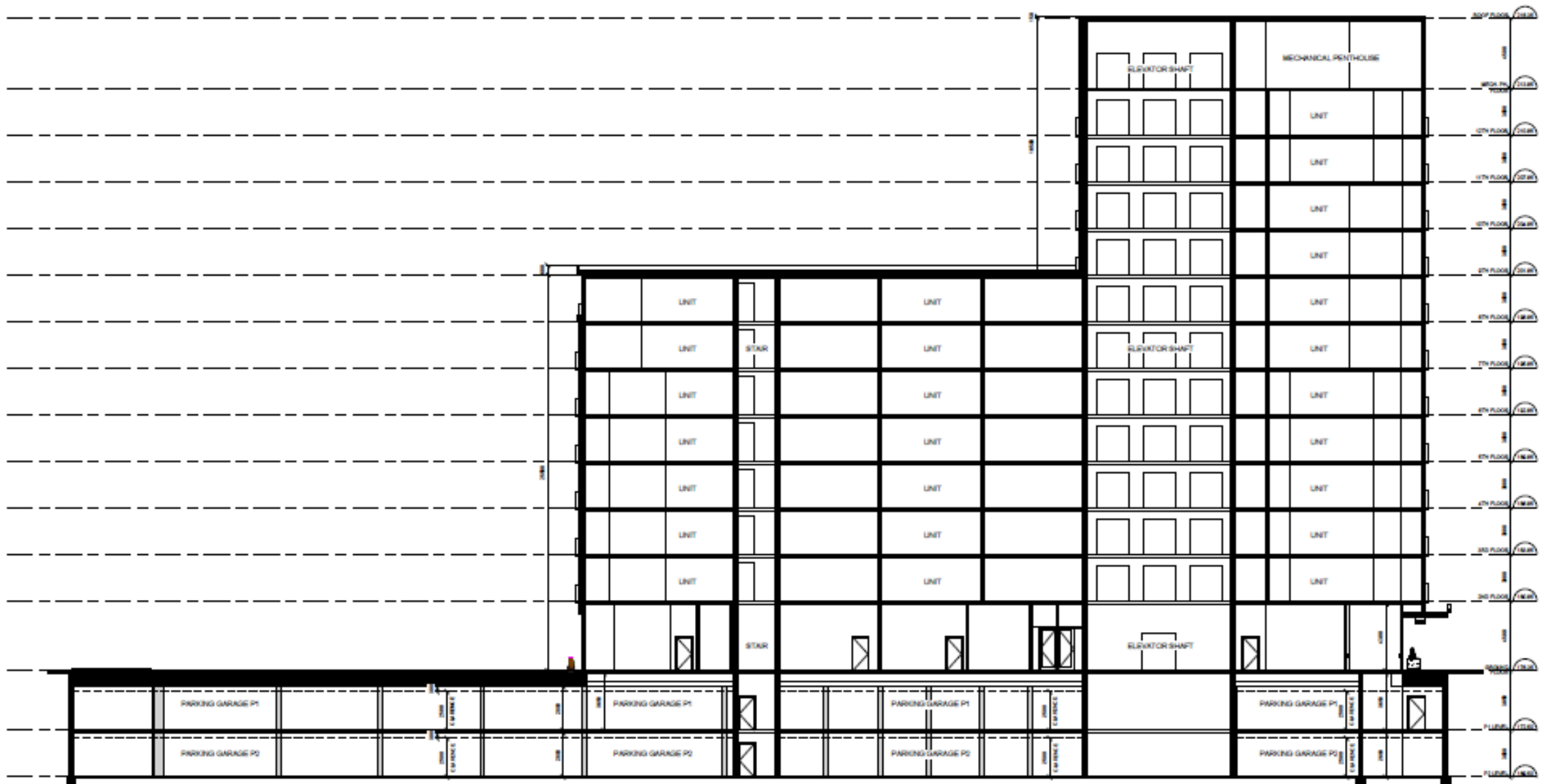


MULLIONS COLOURS:



CANOPY COLOUR:





Planning Updates

- York Region Site Plan expected to be endorsed by Staff January 2019
- Minto Site Plan application currently under review

YORK REGION CONSTRUCTION UPDATES

- Martinway awarded Regional contact in June 2018
- Martinway was established in 1980
- Diverse experience ranging from restoration public tenders to full design-builds
- 35 years of experience in building for the non-profit housing sector
- Developed and built over 1,300 affordable apartments in the GTA

Martinway - Recent Projects



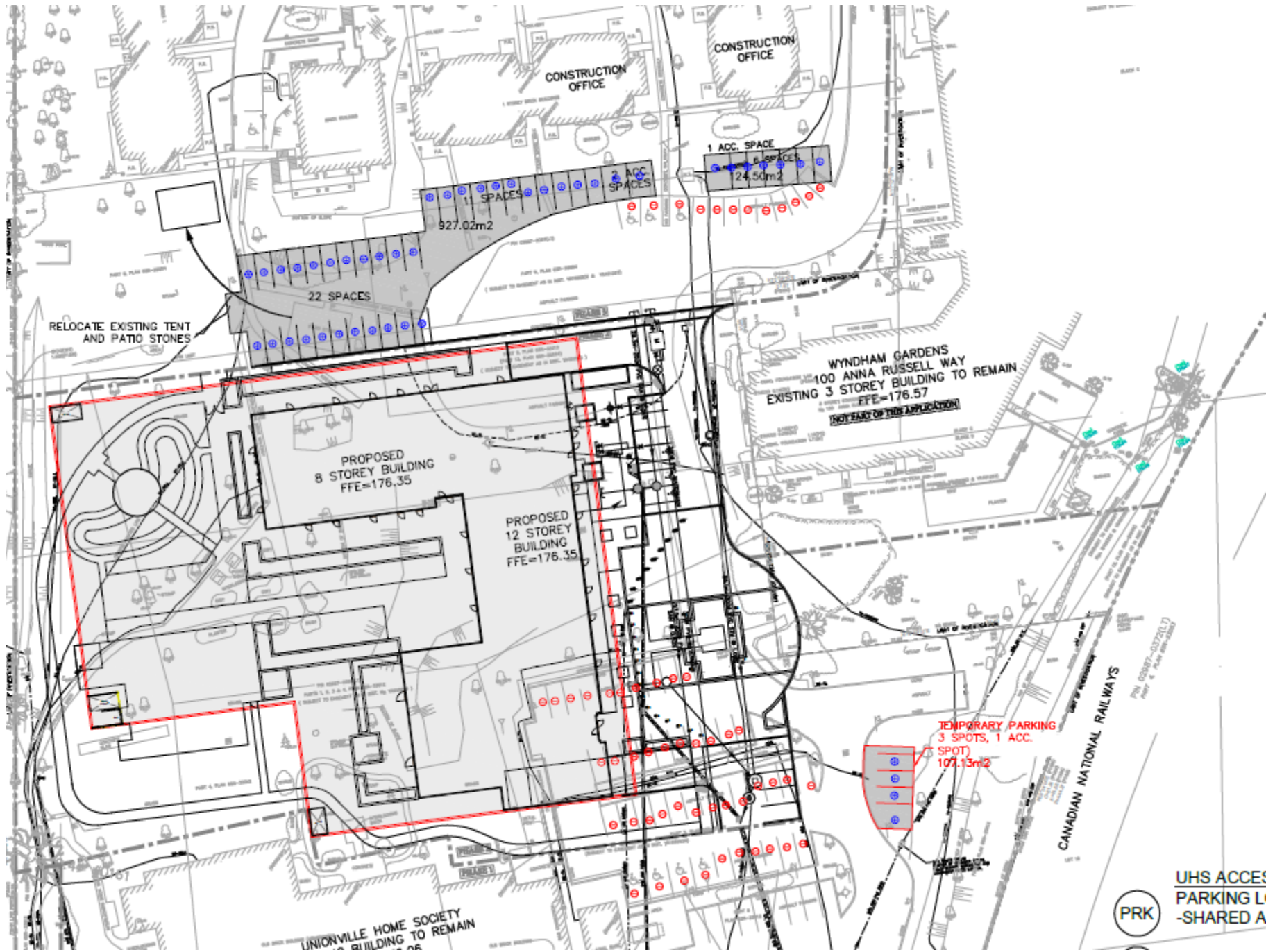
Hansen Road



Norton Lakes

Site Works Occurring Early 2019

- Temporary parking lot
- Tree Removal
- Utility relocation
- Site visits/testing



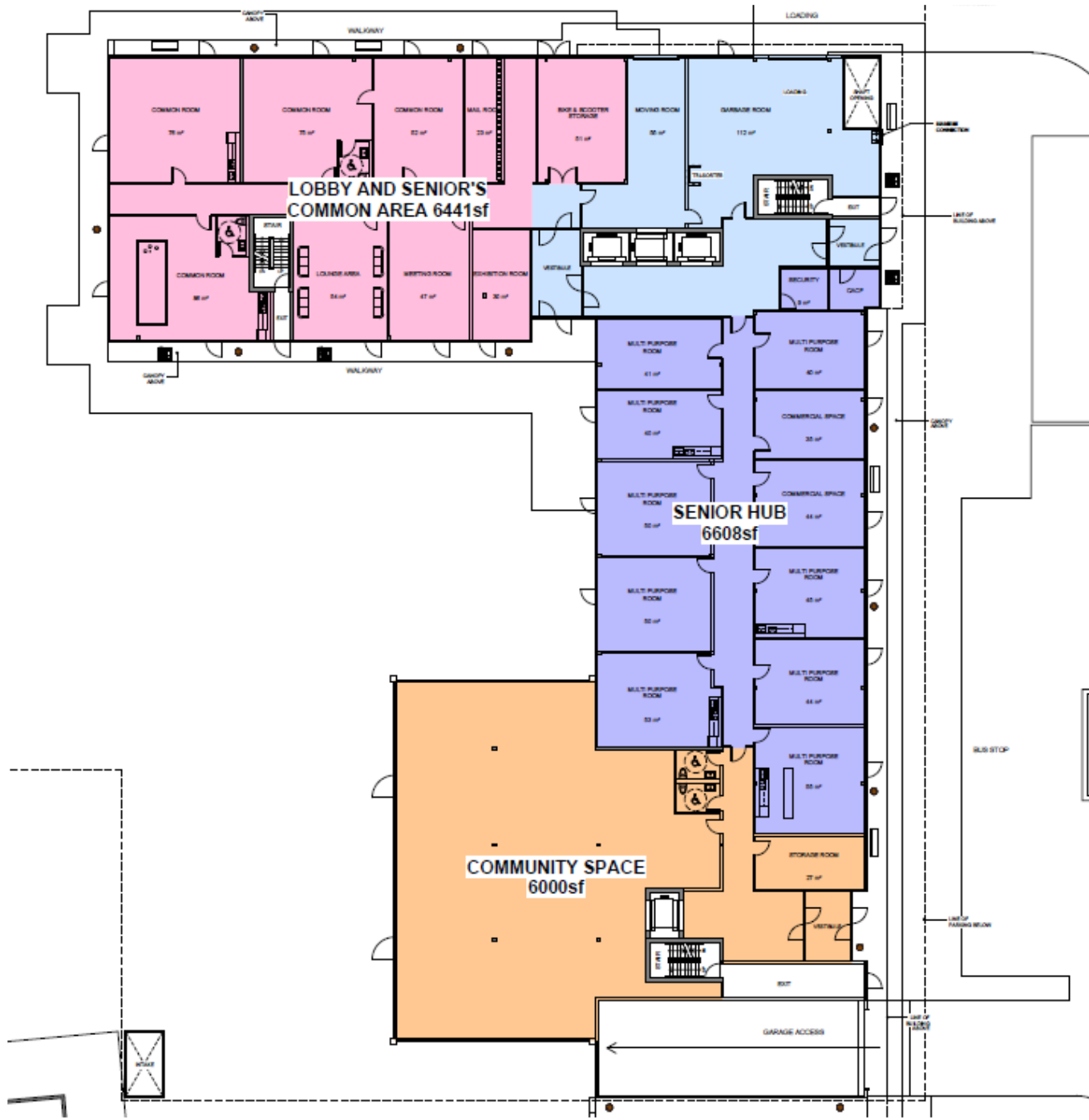
PRK

UHS ACCESS
PARKING L
-SHARED A

Construction Management Principles

- All City by-laws will be enforced and followed
- By-laws include but are not limited to noise, dust, workable hours, street cleanliness
- Will be informed by CLC and Heritage Gardens/Wyndham resident feedback

SENIORS HUB AND COMMUNITY CENTRE UPDATES

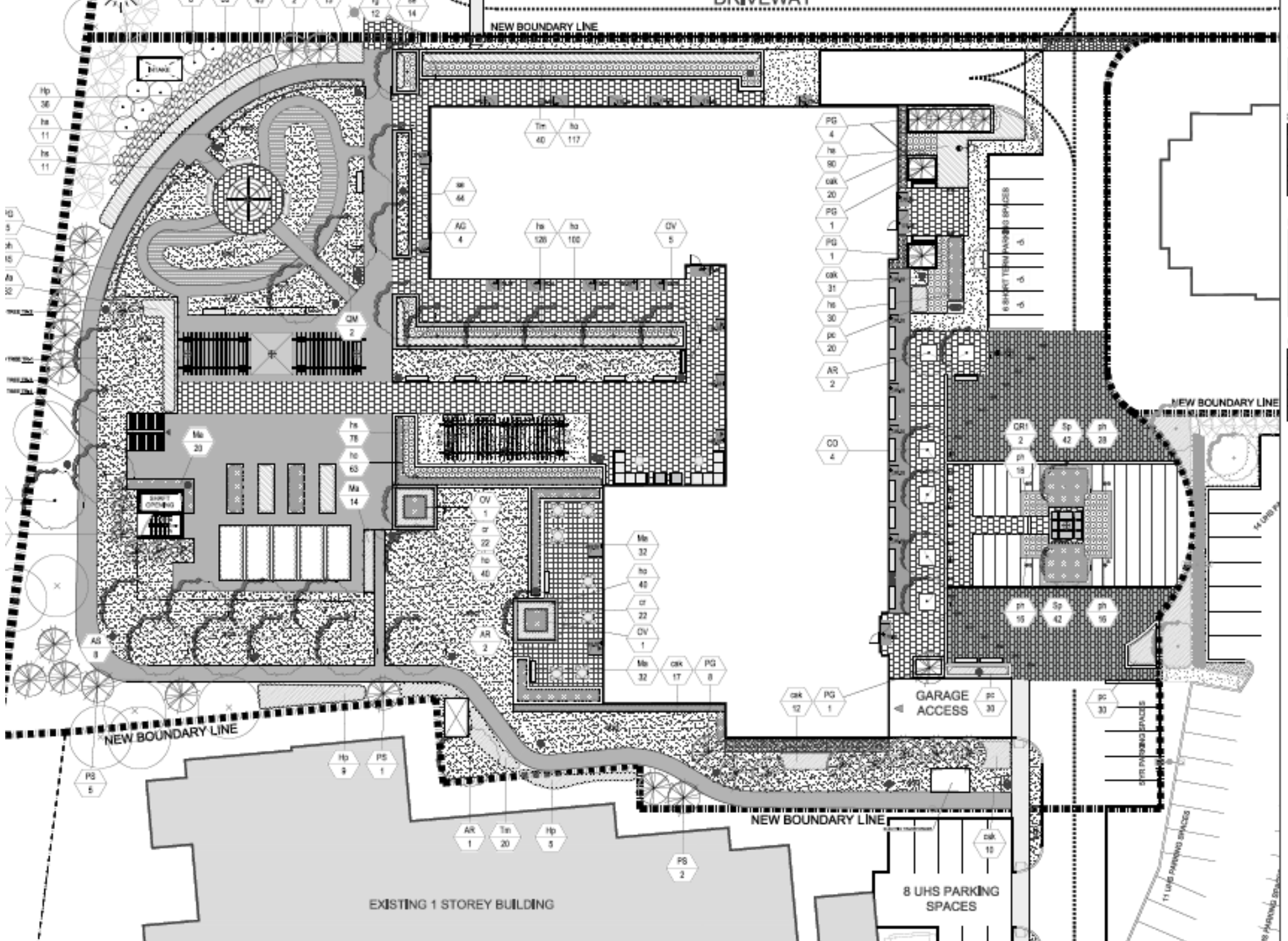


The background consists of several overlapping, semi-transparent shapes in various shades of orange and yellow. The shapes are primarily triangular and circular, creating a dynamic, layered effect. The colors range from a bright, sunny yellow to a deep, warm orange. The overall composition is abstract and modern.

NEXT STEPS

- Next CLC meeting
- Construction Update meeting for Heritage and Wyndham Residents

QUESTIONS?



NEW BOUNDARY LINE

DRIVEWAY

NEW BOUNDARY LINE

NEW BOUNDARY LINE

NEW BOUNDARY LINE

EXISTING 1 STOREY BUILDING

8 UHS PARKING SPACES

GARAGE ACCESS

11 UHS PARKING SPACES

8 UHS PARKING SPACES

hp 36
ha 11
ha 11

PG 5
ha 15
AG 30

AS 8

PS 5

hp 2
PS 1

AR 1
Ta 20
hp 5

PS 2

cok 12
PG 1

pc 33

6 SHORT TERM VISITOR SPACES

8 UHS PARKING SPACES

Ta 40
ha 117

ha 64
AG 4

ha 128
ha 100

OV 5

PG 4
ha 90
cok 20
PG 1
PG 1
cok 31
ha 30
pc 20
AR 2

CO 4

GR1 2
Sp 42
ph 28
ph 15

ph 15
Sp 42
ph 15

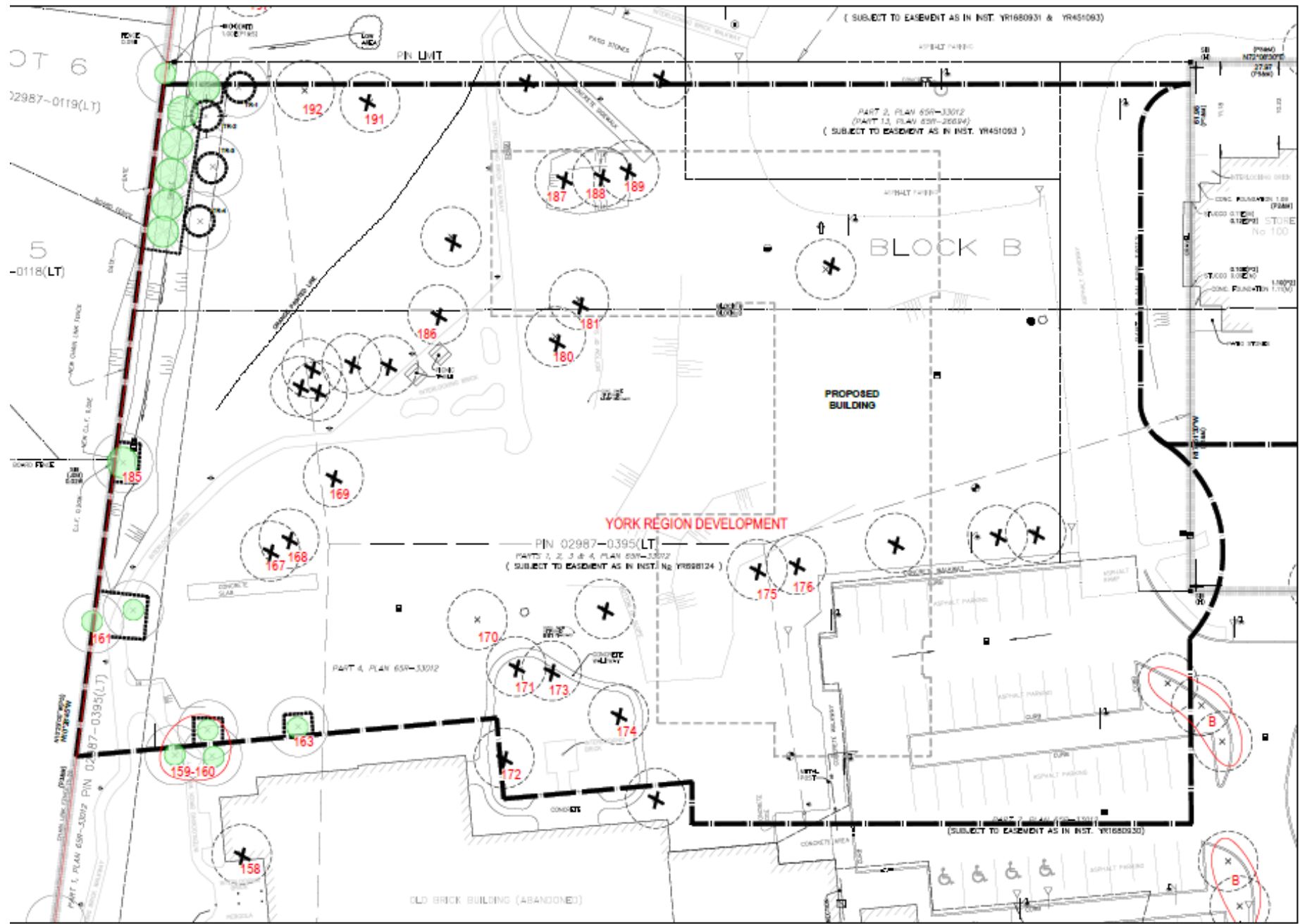
Ma 32
ha 48
cr 22
OV 1
Ma 32
cok 17
PG 8

OV 1
cr 22
ha 48

Ma 20
ha 78
ha 60
Ma 14

GM 2

Driveway



THANK YOU

