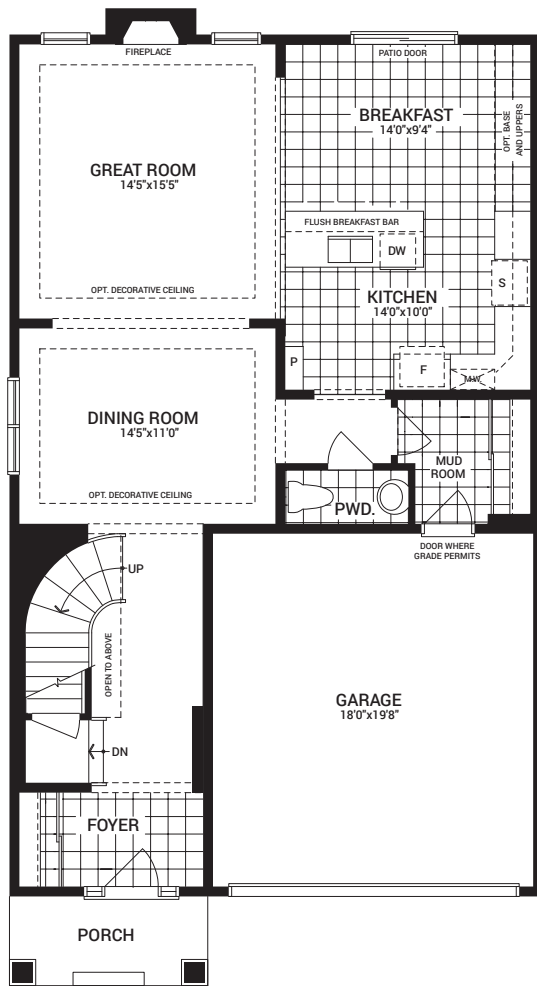


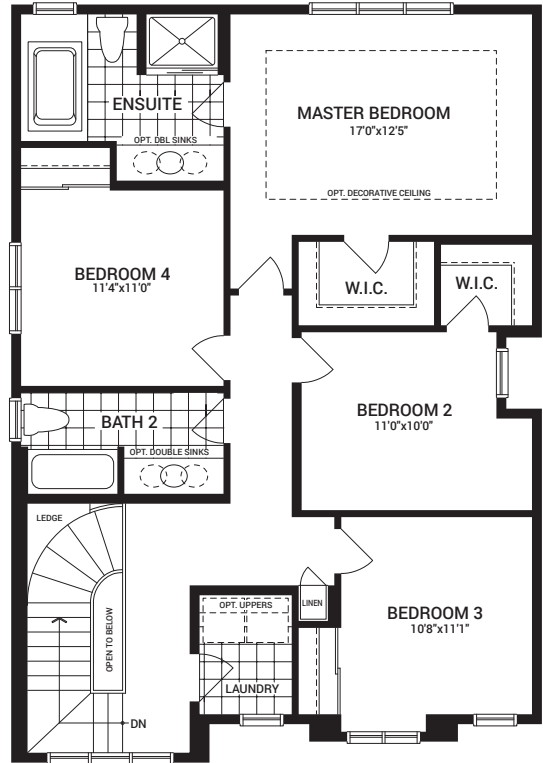


Fitzroy

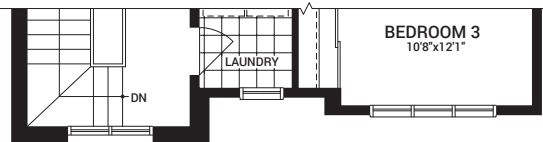
Elevation A - 2275 sq. ft.
Elevation B & C - 2278 sq. ft.



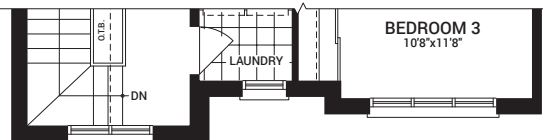
MAIN FLOOR PLAN 'A'



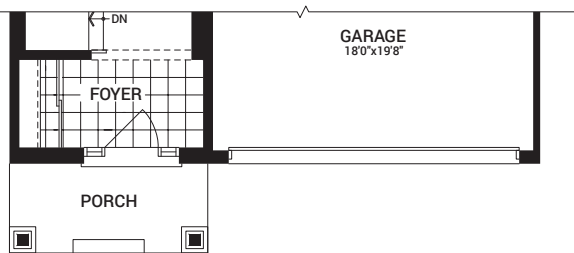
SECOND FLOOR PLAN 'A'



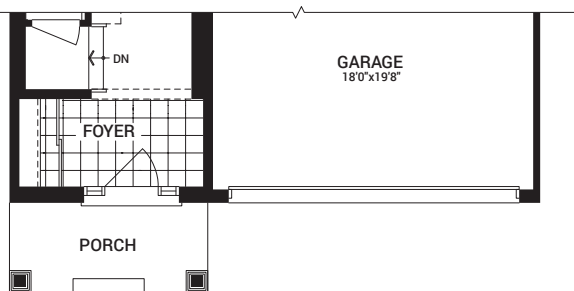
SECOND FLOOR PLAN 'B'



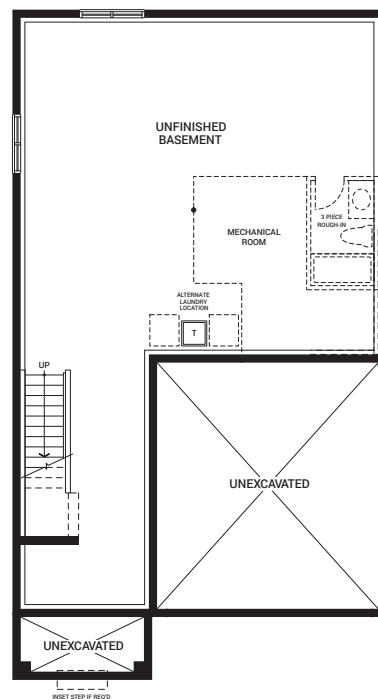
SECOND FLOOR PLAN 'C'



MAIN FLOOR PLAN 'B'



MAIN FLOOR PLAN 'C'



BASEMENT FLOOR PLAN 'A'
(SIMILAR FOR ELEVATION 'B' AND 'C')