

UNIT 841
AREA: 49m²

Ground floor: 732.62m²
Occupancy: Class D
Occupant load: 79 persons
Washroom count:
Female (50%): min. 3
Male (50%): min. 3

4TÉ
73 Breezehill Avenue North
Ottawa, ON K1Y 2H6
tel: 613.232.4499
fax: 613.232.4187
www.4te.ca

Project: **99 BANK + FIFTH
UNIT 841**
OTTAWA, ON
Scale: 1:50
Drawn by: DG

Proj. No.: **2018-016**

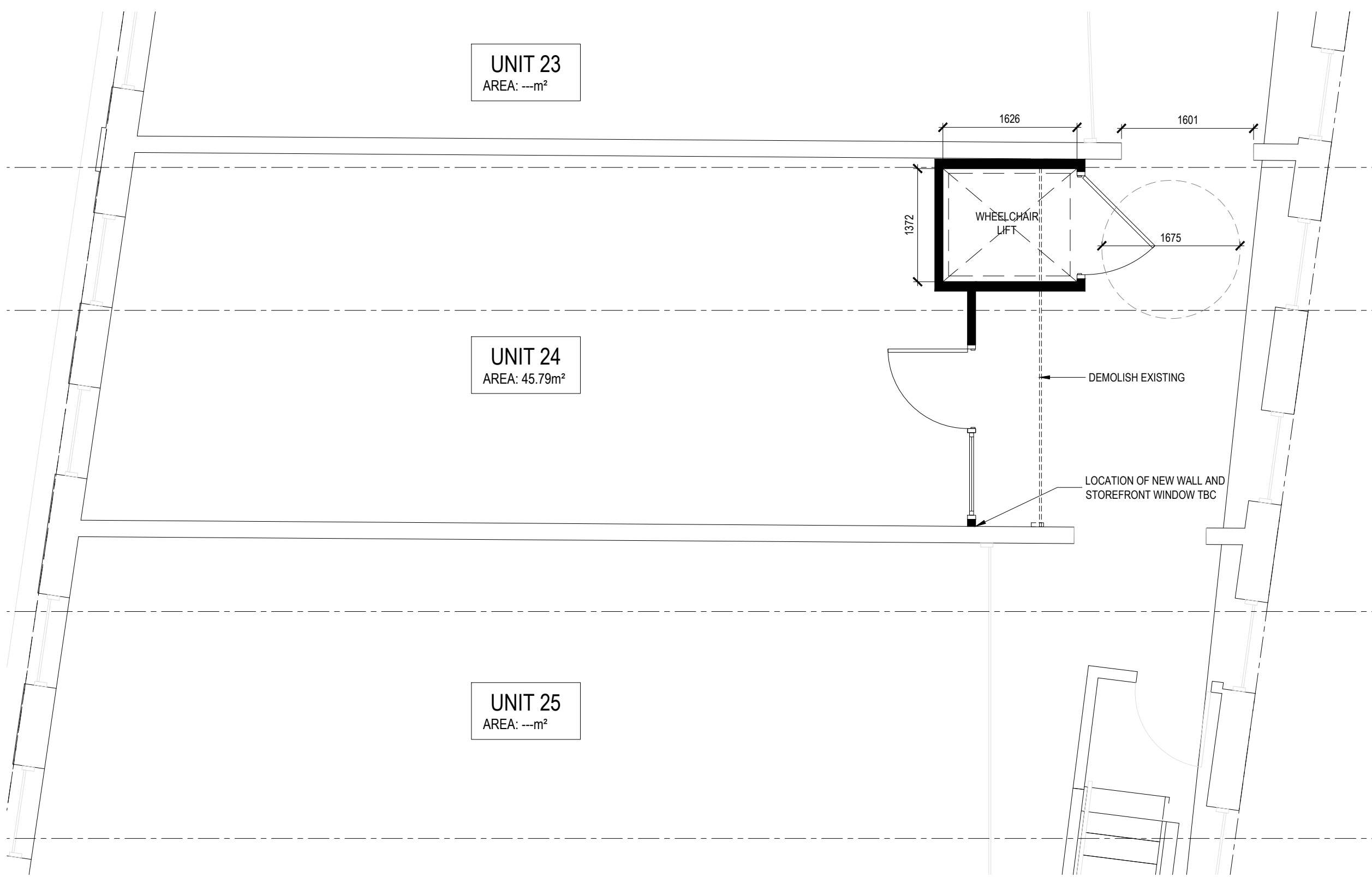
Drawing Title: **GROUND FLOOR
PLAN**
Date: **23 MAY 2019**

D-01

UNIT 23
AREA: ---m²

UNIT 24
AREA: 45.79m²

UNIT 25
AREA: ---m²



4TÉ
73 Breezehill Avenue North
Ottawa, ON K1Y 2H6
tel: 613.232.4499
fax: 613.232.4187
www.4te.ca

Project: **99 BANK + FIFTH
UNIT 841**
OTTAWA, ON
Scale: 1:50
Drawn by: DG

Proj. No.: 2018-016

Drawing Title: **SECOND FLOOR
PLAN**
Date: 22 MAY 2019

D-02