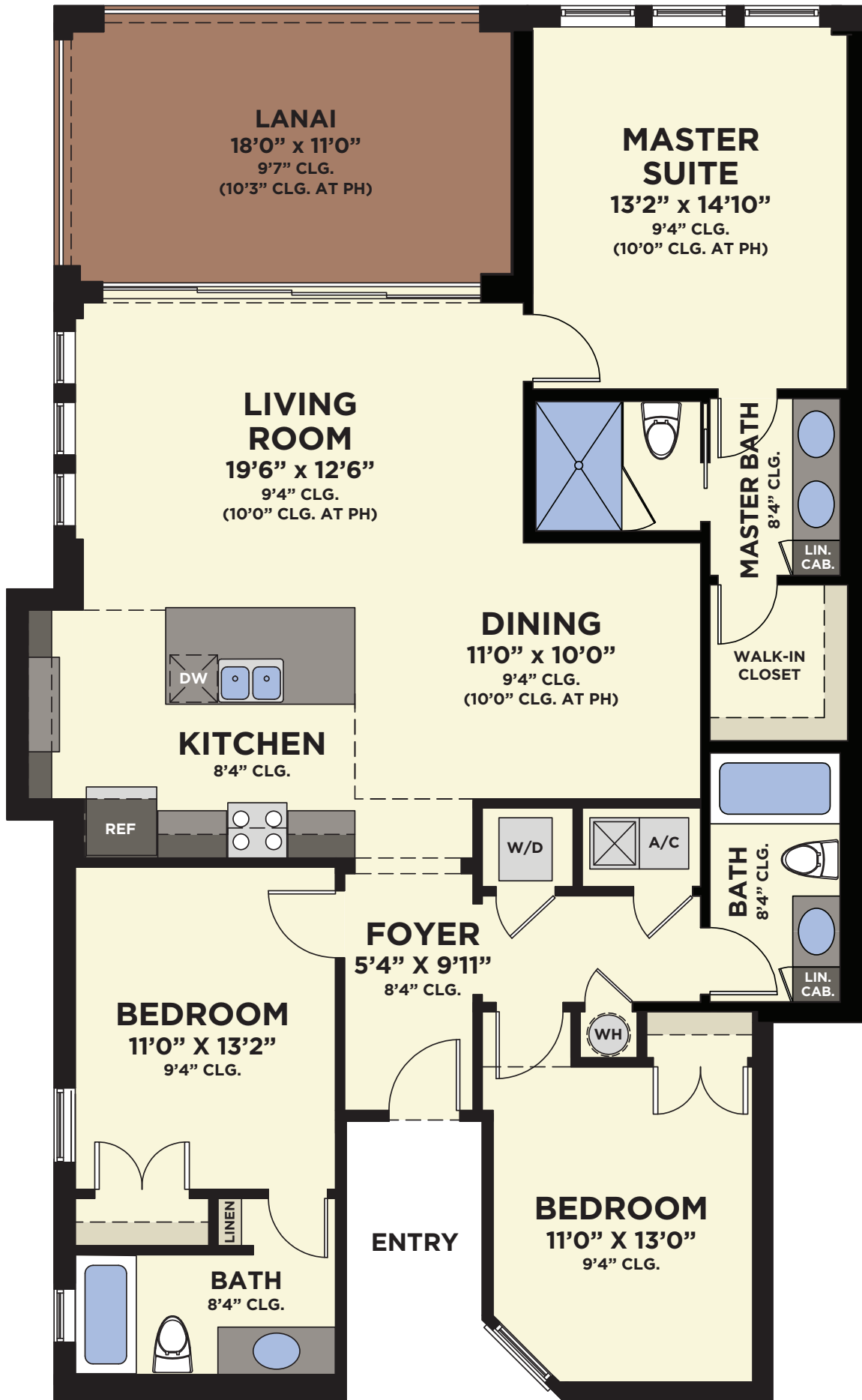




NAUTICAL SERIES

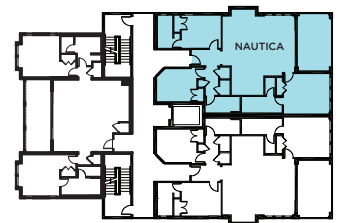
NAUTICA

3 BEDROOMS, 3 BATHS, LANAI



NAUTICA

Total Living Area	1,650 S.F.
Entry	72 S.F.
Lanai	225 S.F.
Total Sq. Ft.	1,947 S.F.



FLOORPLAN



© Minto Communities, LLC 2017. All rights reserved. Content may not be reproduced, copied, altered, distributed, stored or transferred in any form or by any means without express written permission. Artist's renderings, dimensions, specifications, prices and features are approximate and subject to change without notice.

ORAL REPRESENTATIONS CANNOT BE RELIED UPON AS CORRECTLY STATING REPRESENTATIONS OF THE DEVELOPER. FOR CORRECT REPRESENTATIONS, MAKE REFERENCE TO THIS BROCHURE AND TO THE DOCUMENTS REQUIRED BY SECTION 718.503, FLORIDA STATUTES, TO BE FURNISHED BY A DEVELOPER TO A BUYER OR LESSEE.



Minto, the Minto logo, One Particular Harbour and the One Particular Harbour logo are trademarks of Minto Communities, LLC, and/or its affiliates. CGC1519880. 5/17