

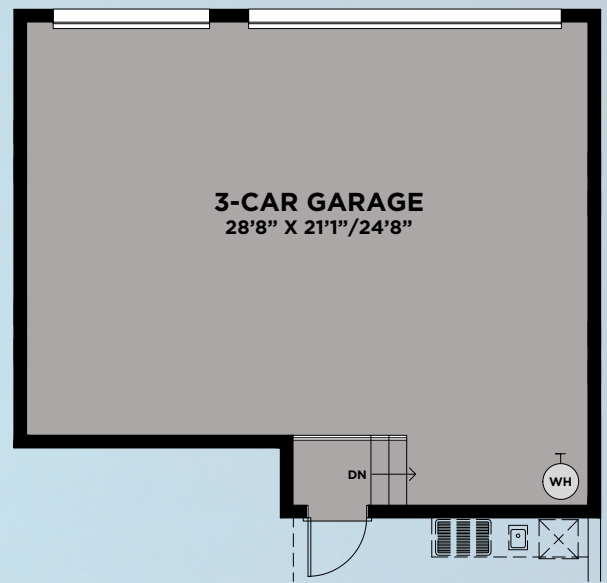
SALVEO COLLECTION
HOPKINS

4 BEDROOMS, DEN, LOFT, 4.5 BATHS, 2-CAR GARAGE

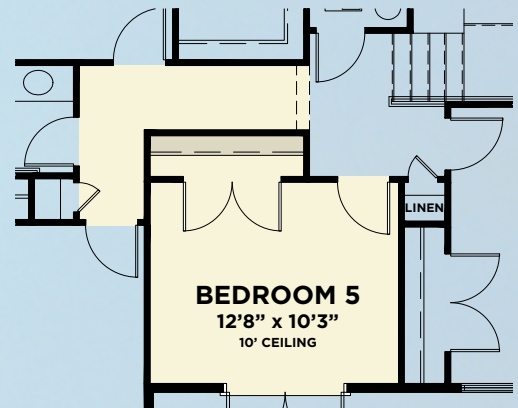


HOPKINS

First Floor	2,044
Second Floor	1,115
Total A/C Sq. Ft.	3,159
2-Car Garage	642
Covered Entry	214
Covered Lanai	283
Covered Deck	214
Total Sq. Ft.	4,512

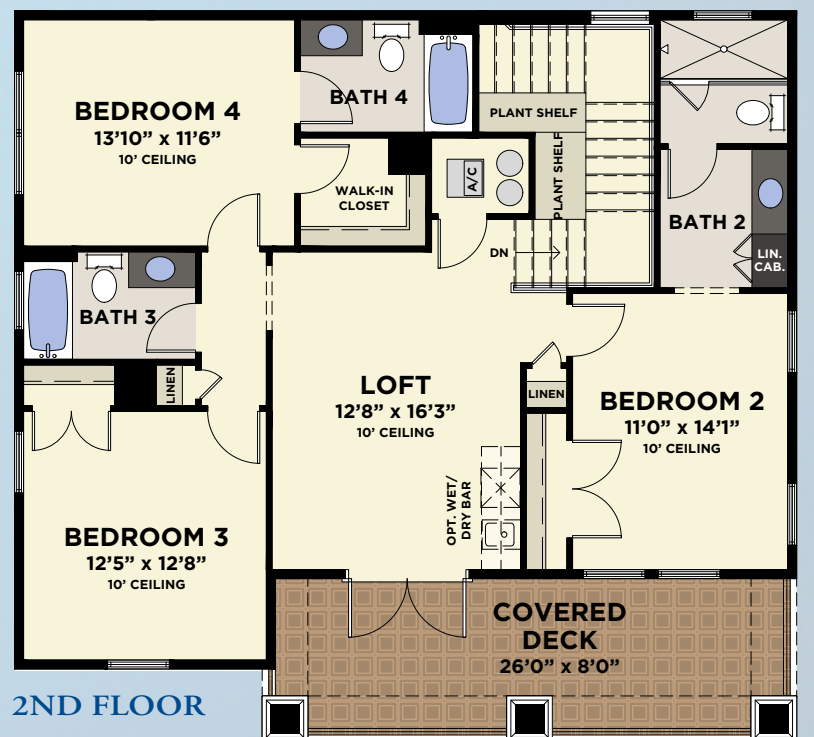
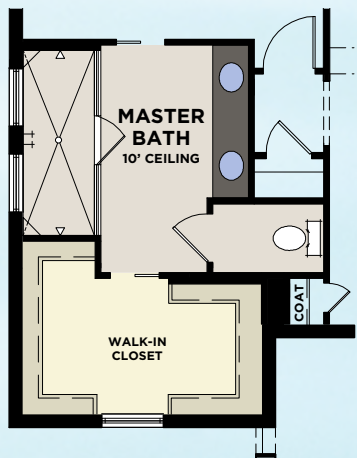


AVAILABLE 3-CAR GARAGE
(731 SQ. FT.)



AVAILABLE BEDROOM #5

AVAILABLE ALTERNATE
MASTER BATH

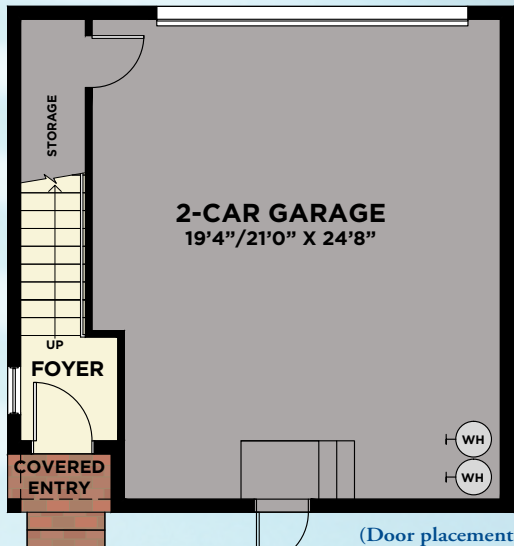


UPPER LEVEL DECK
(ELEVATIONS B & C)

AVAILABLE SINGLE-FAMILY 2ND FLOOR RETREAT

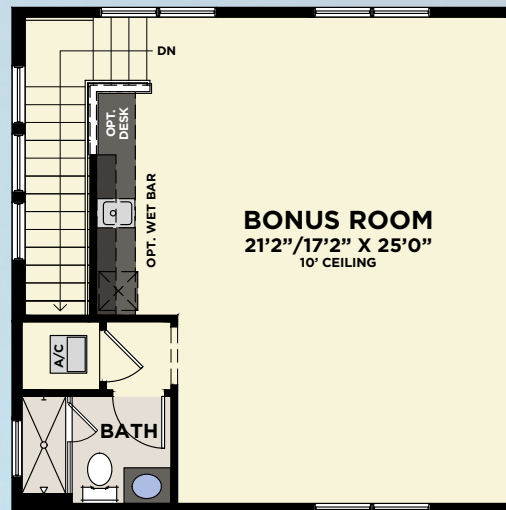
2-CAR GARAGE (COURTYARD ENTRY)

WITH SECOND FLOOR BONUS ROOM OR SUITE



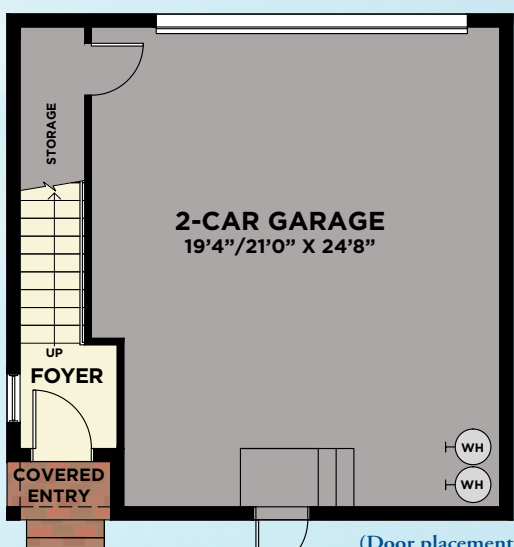
LOWER FLOOR

(Door placement varies per plan)



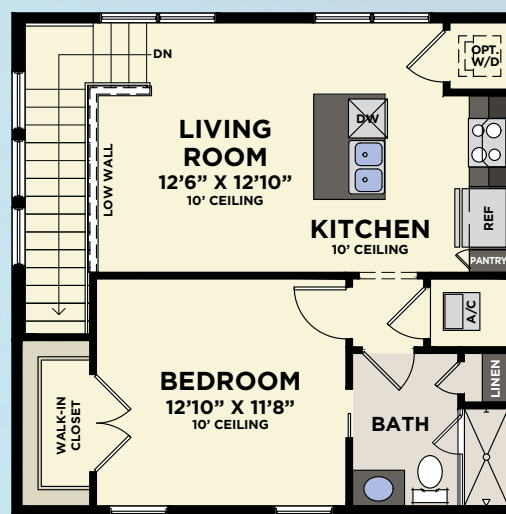
SECOND FLOOR
W/BONUS ROOM

*Window included at select configurations



LOWER FLOOR

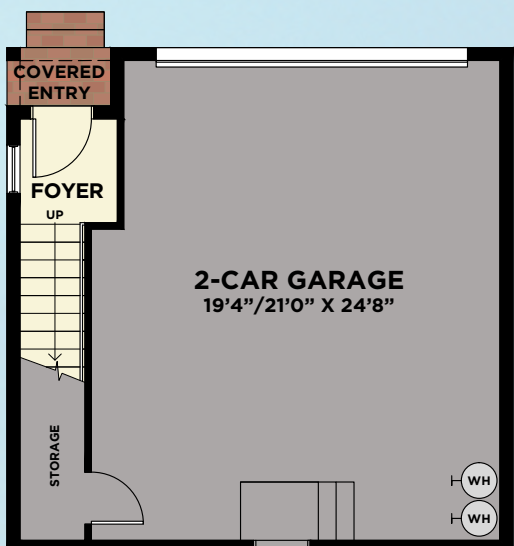
(Door placement varies per plan)



SECOND FLOOR
W/SUITE

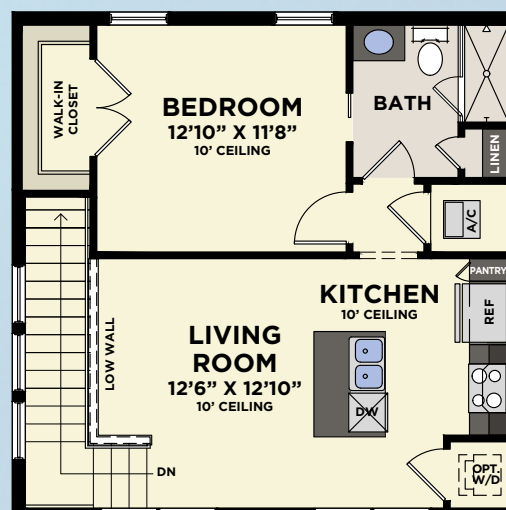
*Window included at select configurations

2-CAR GARAGE (DRIVEWAY ENTRY) WITH SECOND FLOOR SUITE



LOWER FLOOR

(Door placement varies per plan)



SECOND FLOOR
W/SUITE

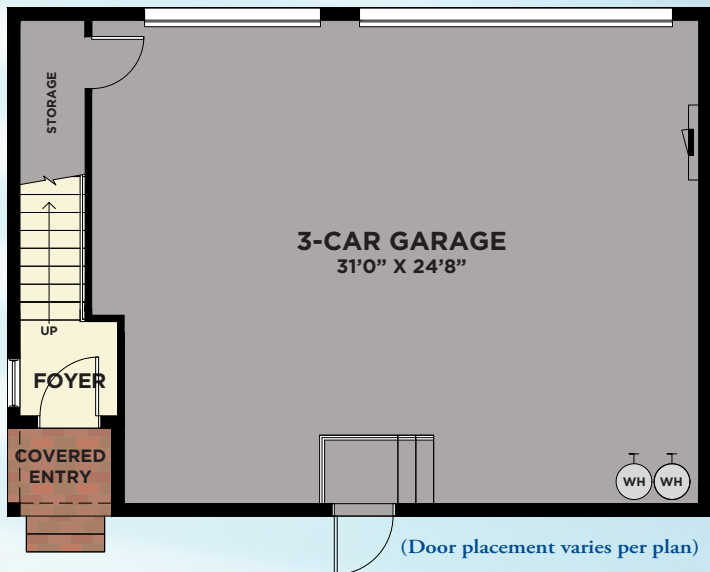
*Window included at select configurations

Total A/C Sq. Ft.	720
2-Car Garage	548
Storage	68
Covered Entry	16
Total Sq. Ft.	1,352

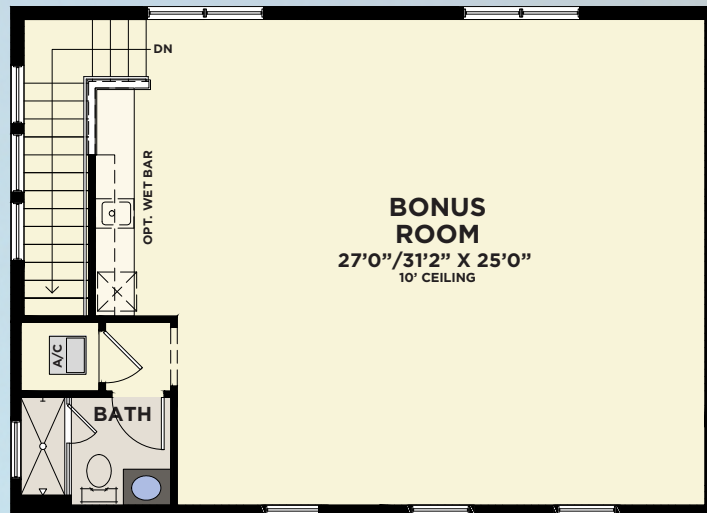
AVAILABLE SINGLE-FAMILY 2ND FLOOR RETREAT

3-CAR GARAGE (COURTYARD ENTRY)

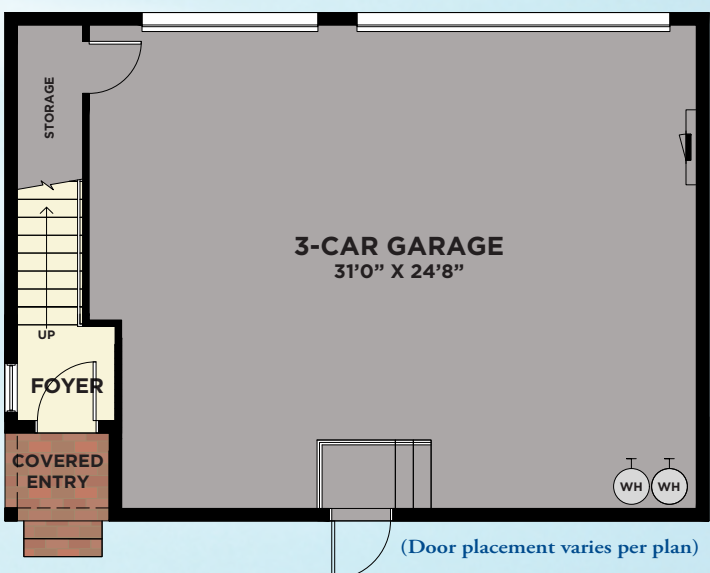
WITH SECOND FLOOR BONUS ROOM OR SUITE



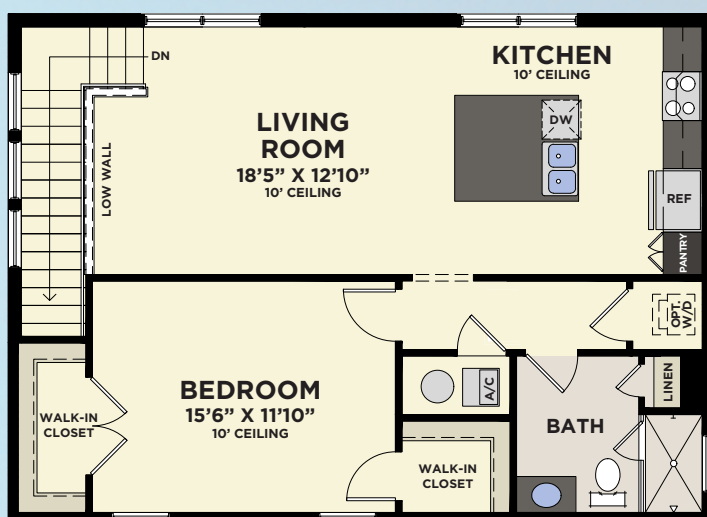
LOWER FLOOR



SECOND FLOOR
W/BONUS ROOM

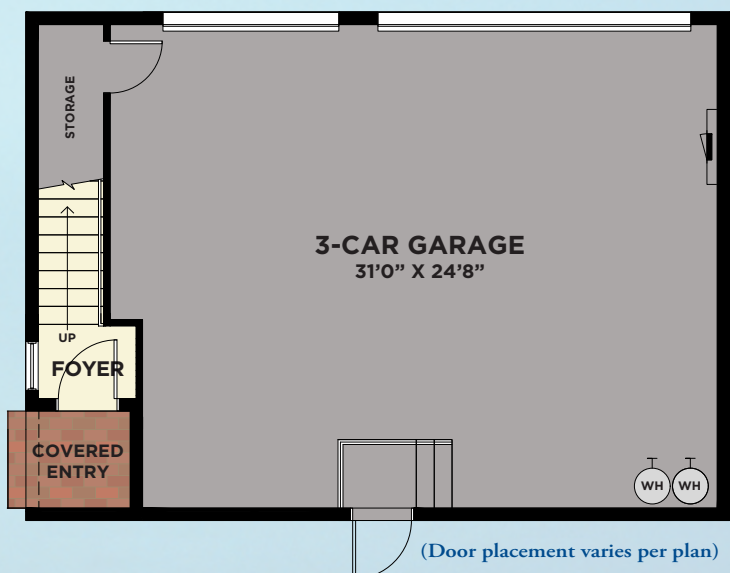


LOWER FLOOR

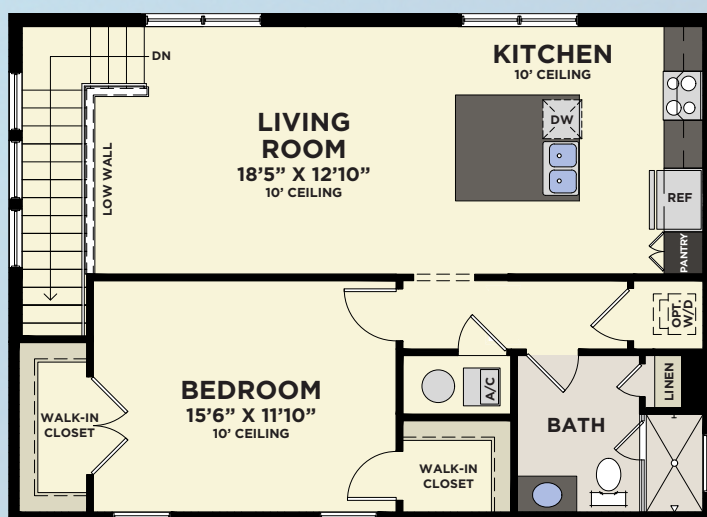


SECOND FLOOR
W/SUITE

3-CAR GARAGE (SIDEYARD ENTRY) WITH SECOND FLOOR SUITE



LOWER FLOOR



SECOND FLOOR
W/SUITE

Total A/C Sq. Ft.	965
3-Car Garage	809
Storage	55
Covered Entry	19
Total Sq. Ft.	1,848