

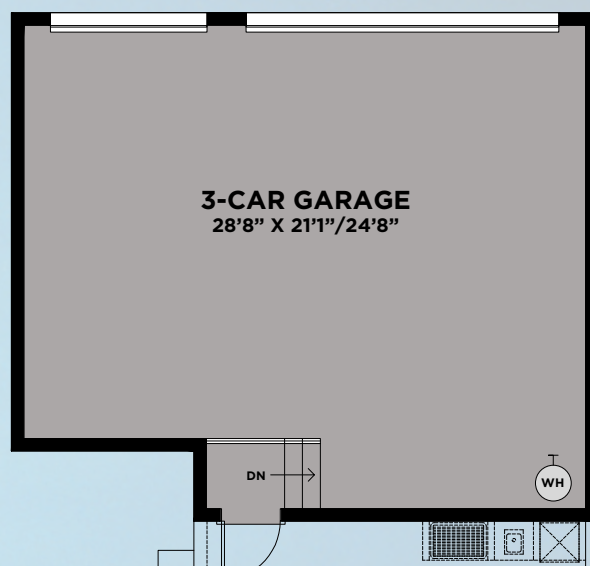
# PORTER

3 BEDROOMS, DEN, LOFT, 3.5 BATHS, 2-CAR GARAGE



**PORTER**

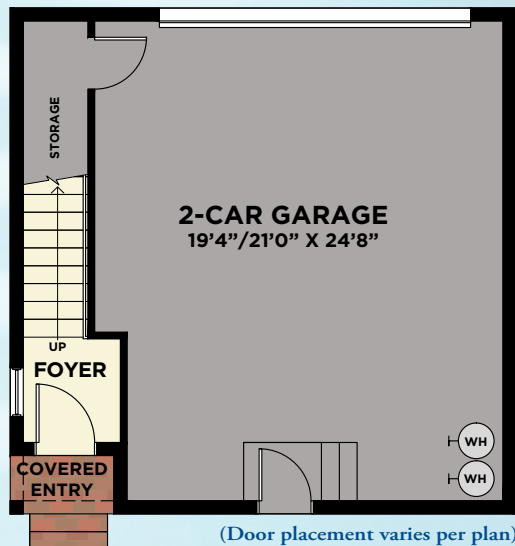
First Floor	1,952
Second Floor	948
Total A/C Sq. Ft.	2,900
2-Car Garage	657
Covered Entry	196
Covered Lanai	364
Covered Deck	196
Total Sq. Ft.	4,313



# AVAILABLE SINGLE-FAMILY 2ND FLOOR RETREAT

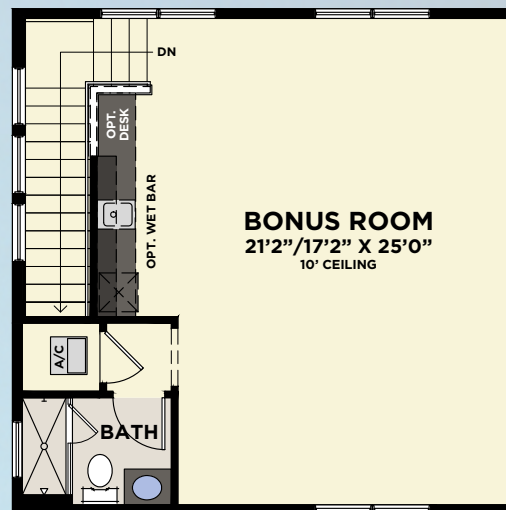
## 2-CAR GARAGE (COURTYARD ENTRY)

WITH SECOND FLOOR BONUS ROOM OR SUITE

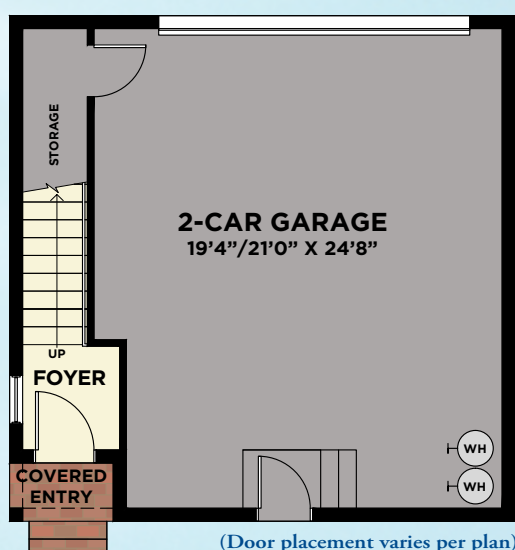


(Door placement varies per plan)

LOWER FLOOR

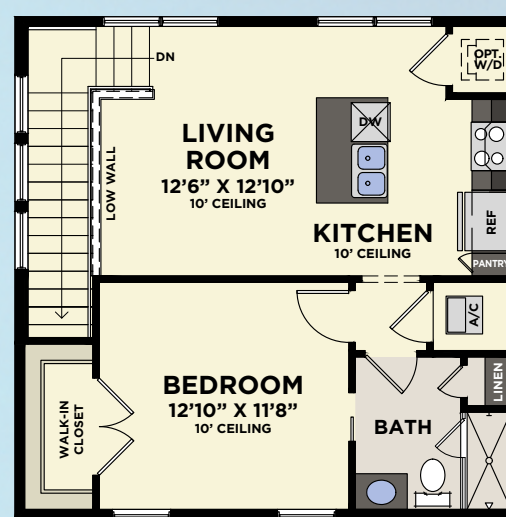


SECOND FLOOR  
W/BONUS ROOM



(Door placement varies per plan)

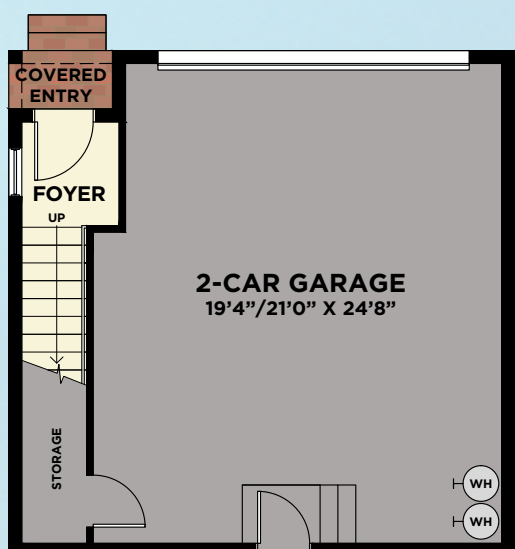
LOWER FLOOR



SECOND FLOOR  
W/SUITE

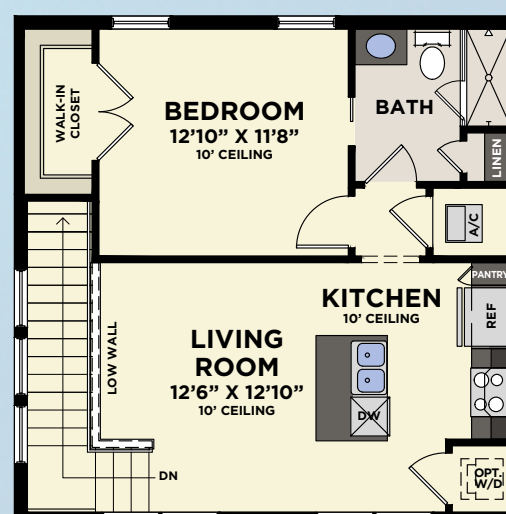
## 2-CAR GARAGE (DRIVEWAY ENTRY)

WITH SECOND FLOOR SUITE



(Door placement varies per plan)

LOWER FLOOR



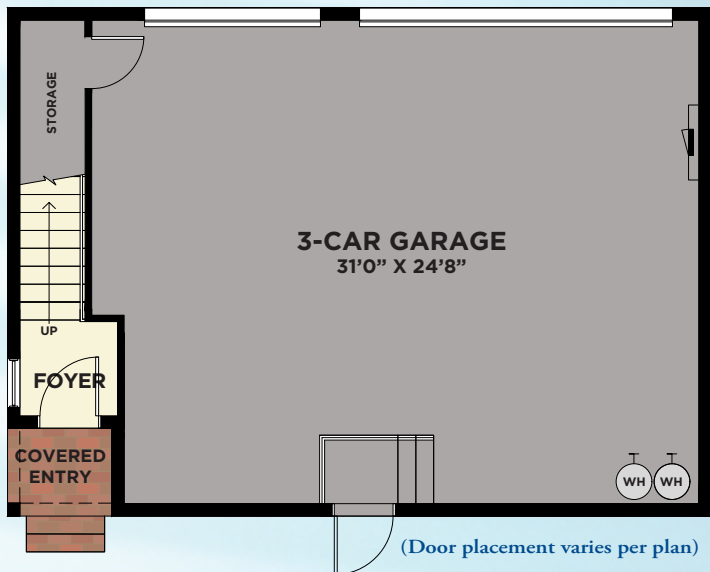
SECOND FLOOR  
W/SUITE

Total A/C Sq. Ft.	720
2-Car Garage	548
Storage	68
Covered Entry	16
<b>Total Sq. Ft.</b>	<b>1,352</b>

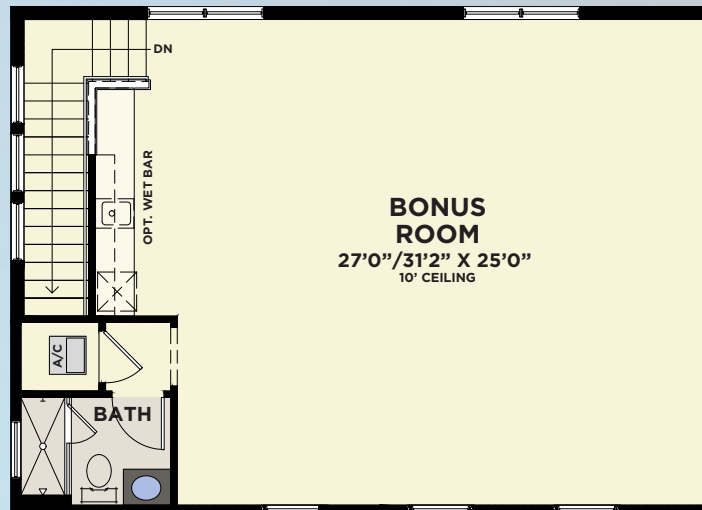
# AVAILABLE SINGLE-FAMILY 2ND FLOOR RETREAT

## 3-CAR GARAGE (COURTYARD ENTRY)

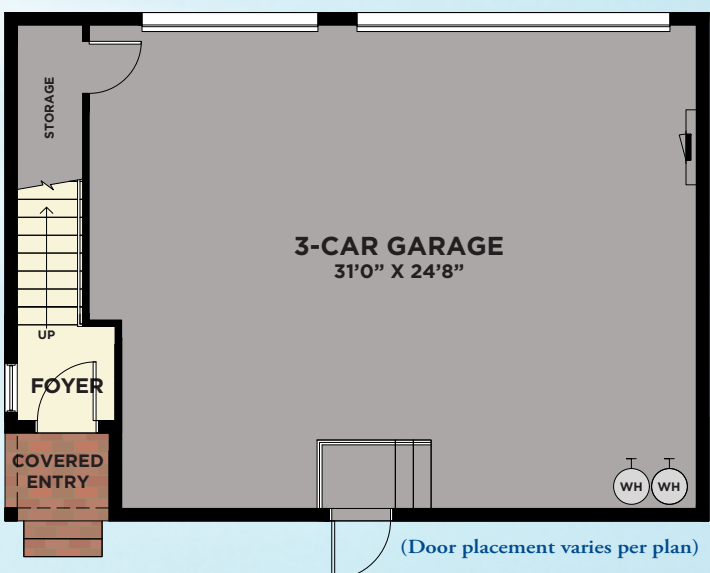
WITH SECOND FLOOR BONUS ROOM OR SUITE



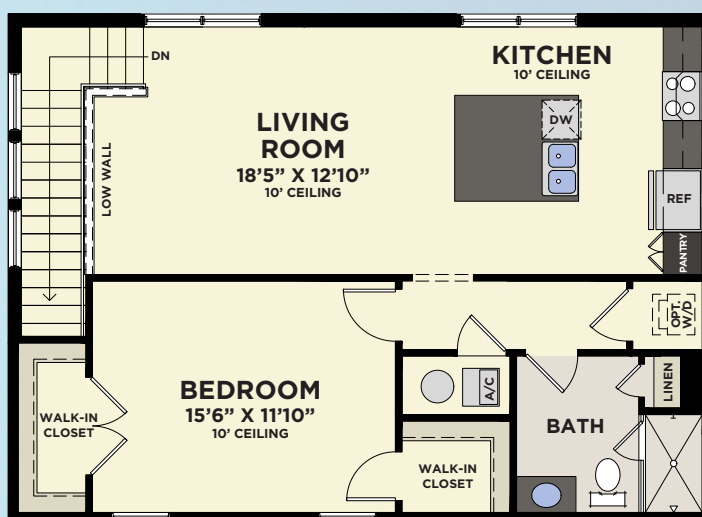
LOWER FLOOR



SECOND FLOOR  
W/BONUS ROOM



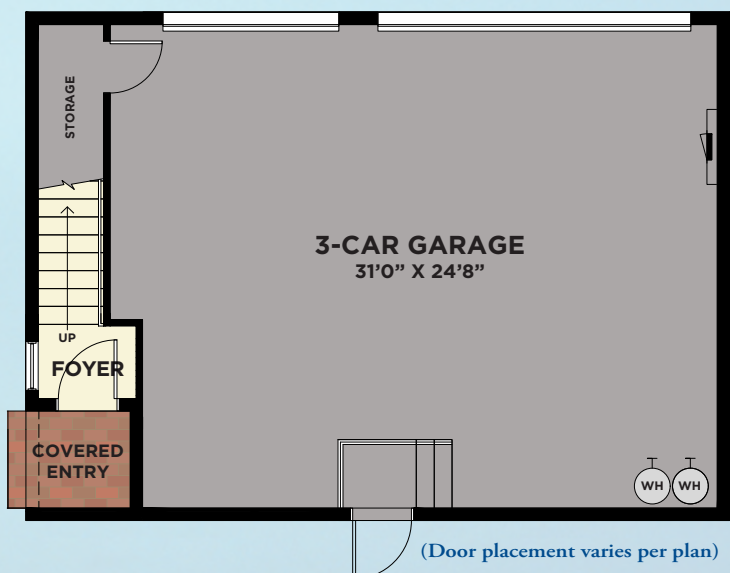
LOWER FLOOR



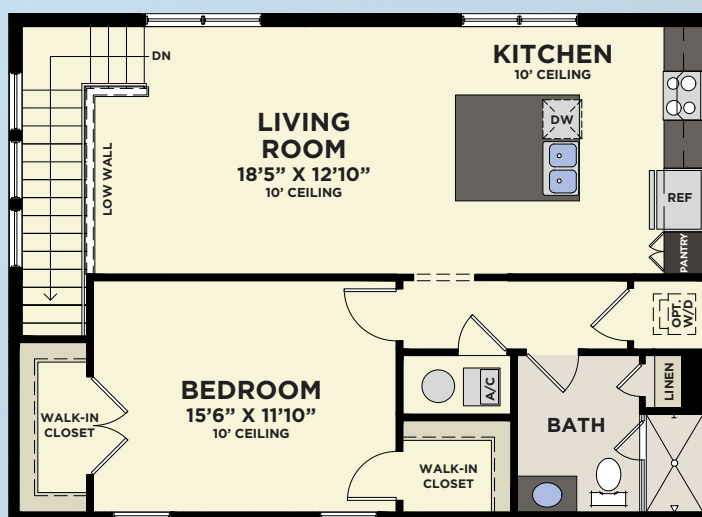
SECOND FLOOR  
W/SUITE

## 3-CAR GARAGE (SIDEYARD ENTRY)

WITH SECOND FLOOR SUITE



LOWER FLOOR



SECOND FLOOR  
W/SUITE

Total A/C Sq. Ft.	965
3-Car Garage	809
Storage	55
Covered Entry	19
<b>Total Sq. Ft.</b>	<b>1,848</b>