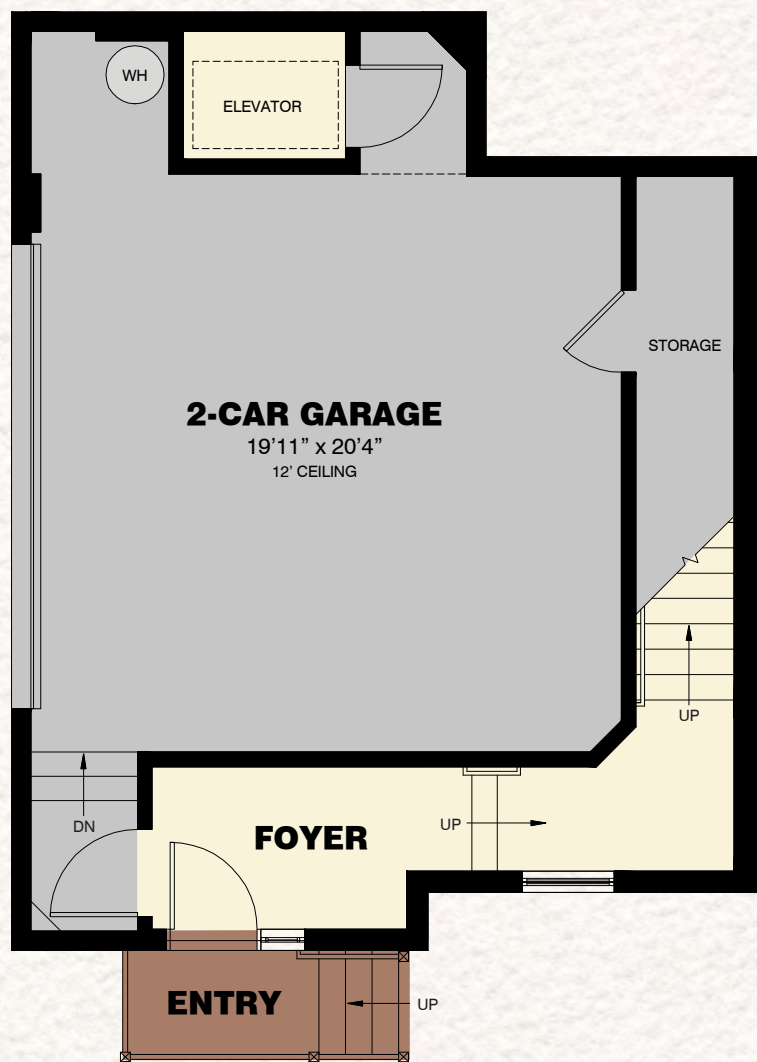


THE SABAL COLLECTION

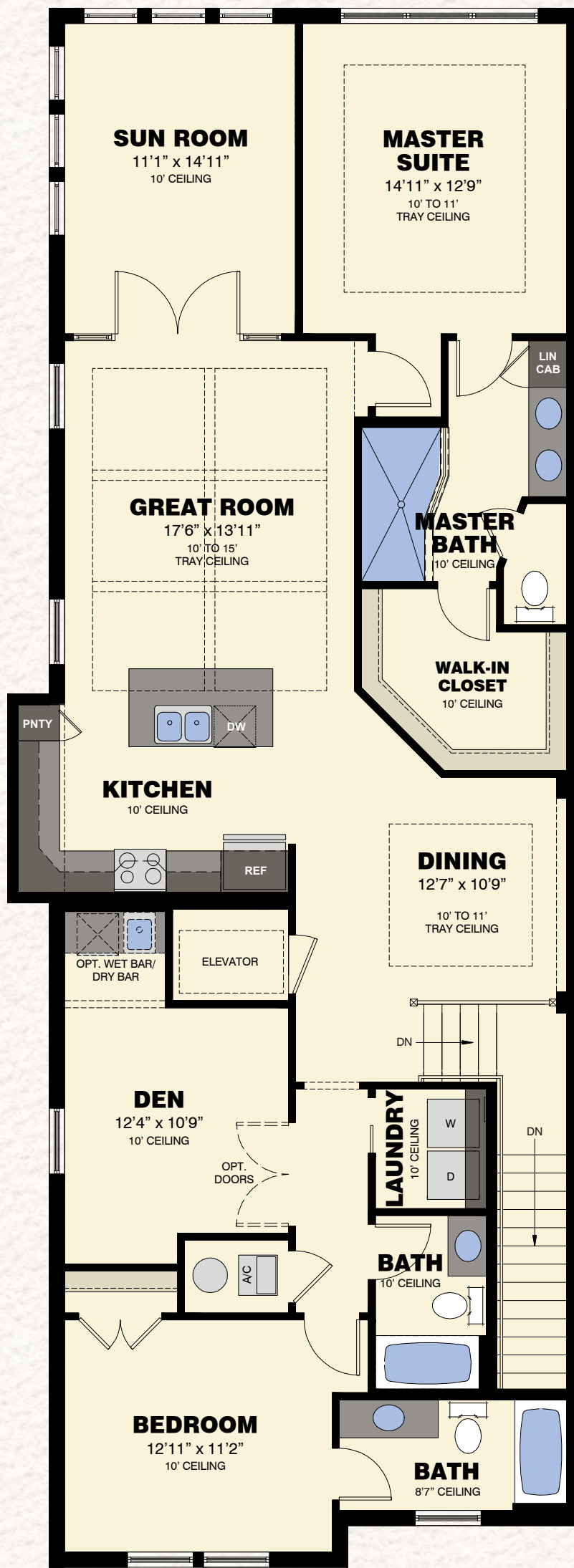
OLEANDER

2 Bedrooms / 3 Baths / Den / Sun Room / 2-Car Garage

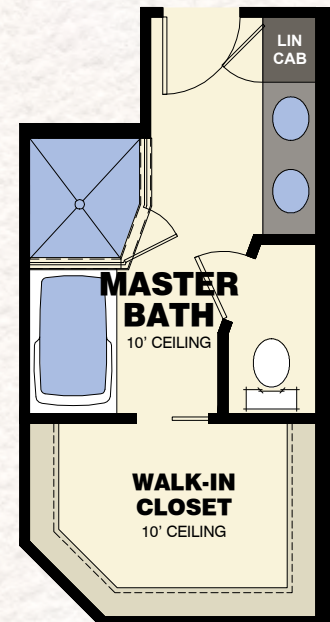
The Isles
OF COLLIER PRESERVE



FIRST FLOOR PLAN



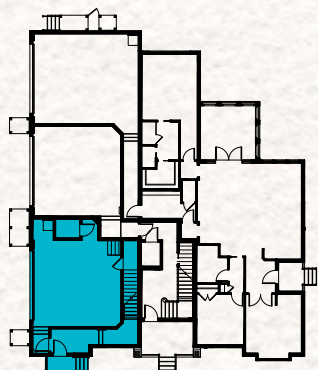
SECOND FLOOR PLAN



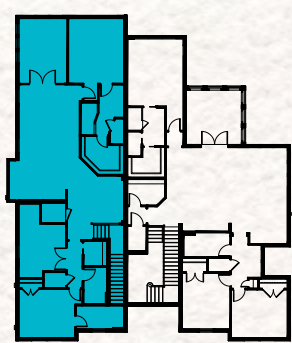
AVAILABLE MASTER BATH VARIATION



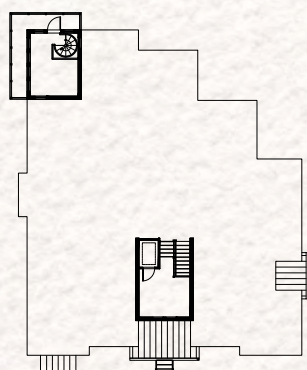
AVAILABLE BEDROOM VARIATION



Level 1



Level 2



Level 3

First Floor	144 S.F.
Second Floor	1,843 S.F.
Total Living Area	1,987 S.F.
2-Car Garage w/Storage	557 S.F.
Entry	23 S.F.
Elevator	24 S.F.
Total	2,591 S.F.