

COASTAL COLLECTION

ATLANTIC

2 Bedrooms, 2 Baths, Den, 2-Car Garage



ELEVATION A



ELEVATION B



ATLANTIC

Total - Living	1,482
Garage	452
Covered Patio	205
Covered Entry	39
Total	2,178

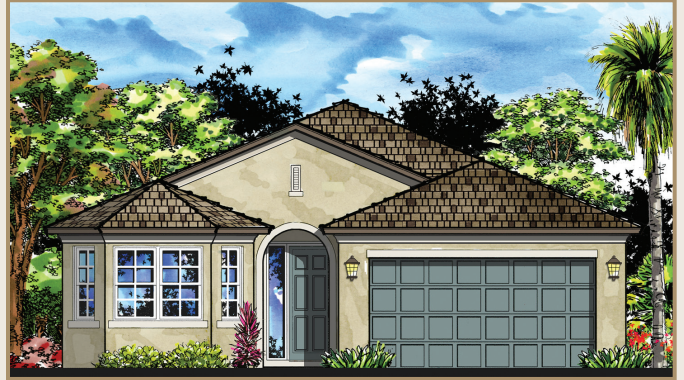
COASTAL COLLECTION

CORAL REEF

3 Bedrooms, Den, 2.5 Baths, 2-Car Garage



ELEVATION A



ELEVATION B

CORAL REEF

Total - Living	2,220
Garage	410
Covered Patio	246
Covered Entry	40
Total	2,916



COASTAL COLLECTION

GULFSTREAM

2 Bedrooms, Den, 2 Baths, 2-Car Garage



ELEVATION A



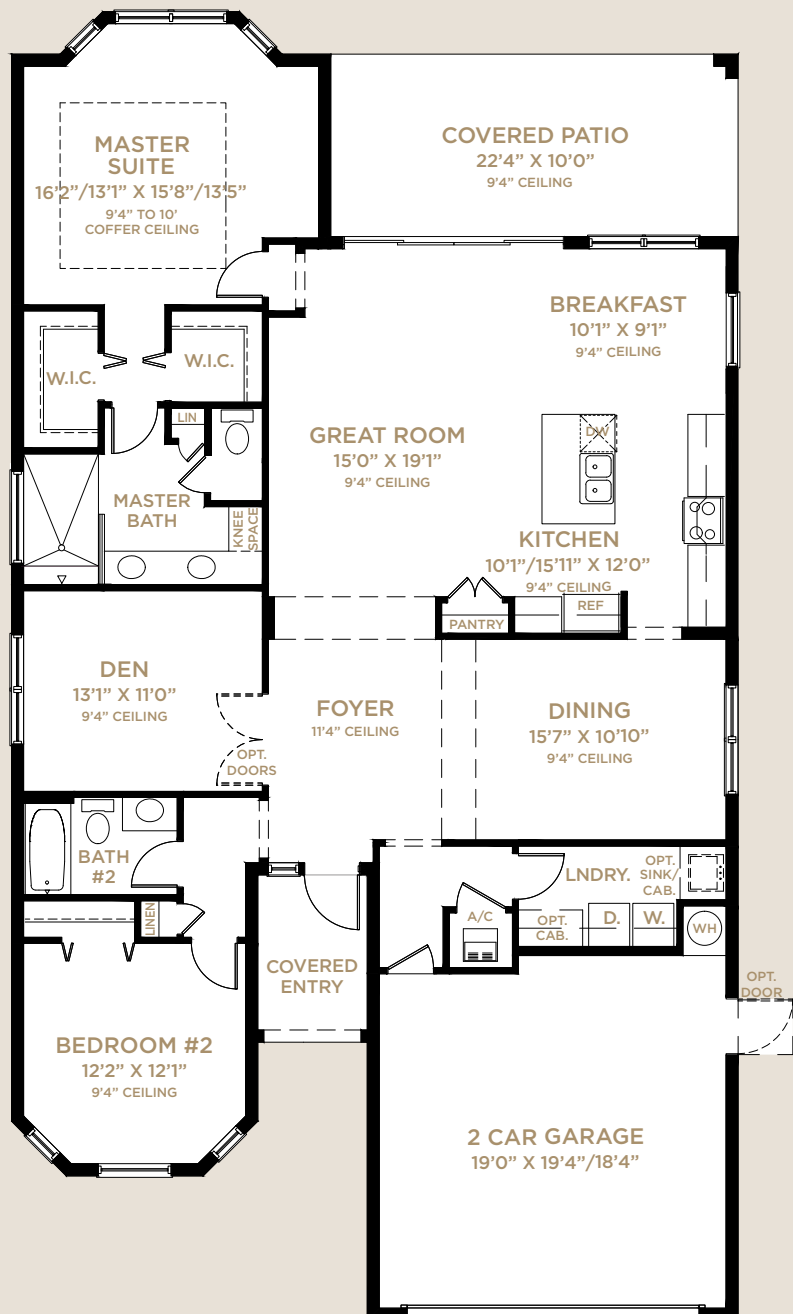
ELEVATION B

GULFSTREAM

Total - Living	1,895
Garage	406
Covered Patio	223
Covered Entry	55
Total	2,579



AVAILABLE BEDROOM #3



COASTAL COLLECTION

ISLE

2 Bedrooms, Den, 2.5 Baths, 2-Car Garage



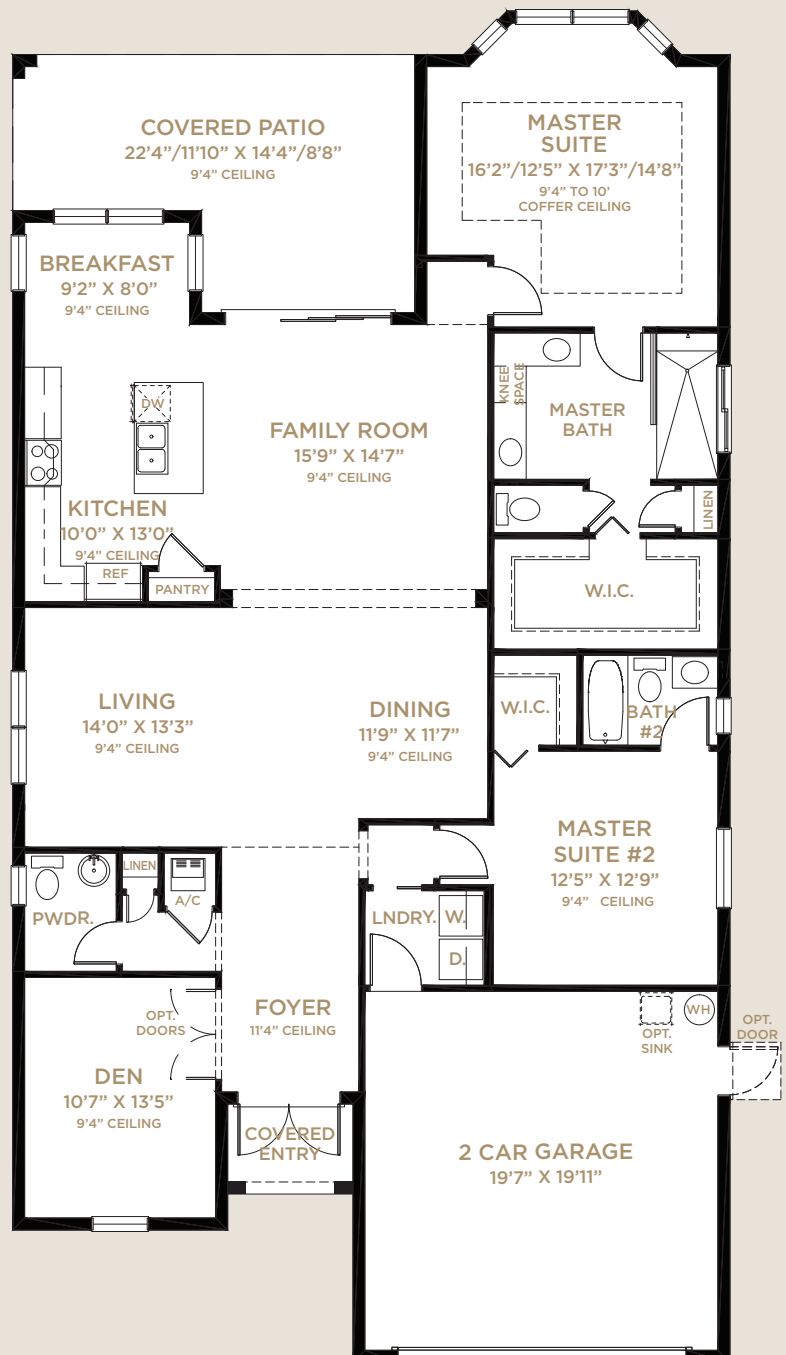
ELEVATION A



ELEVATION B

ISLE

Total - Living	2,039
Garage	427
Covered Patio	261
Covered Entry	35
Total	2,762



AVAILABLE BEDROOM #3
w/BATH #3

COASTAL COLLECTION

SEASIDE

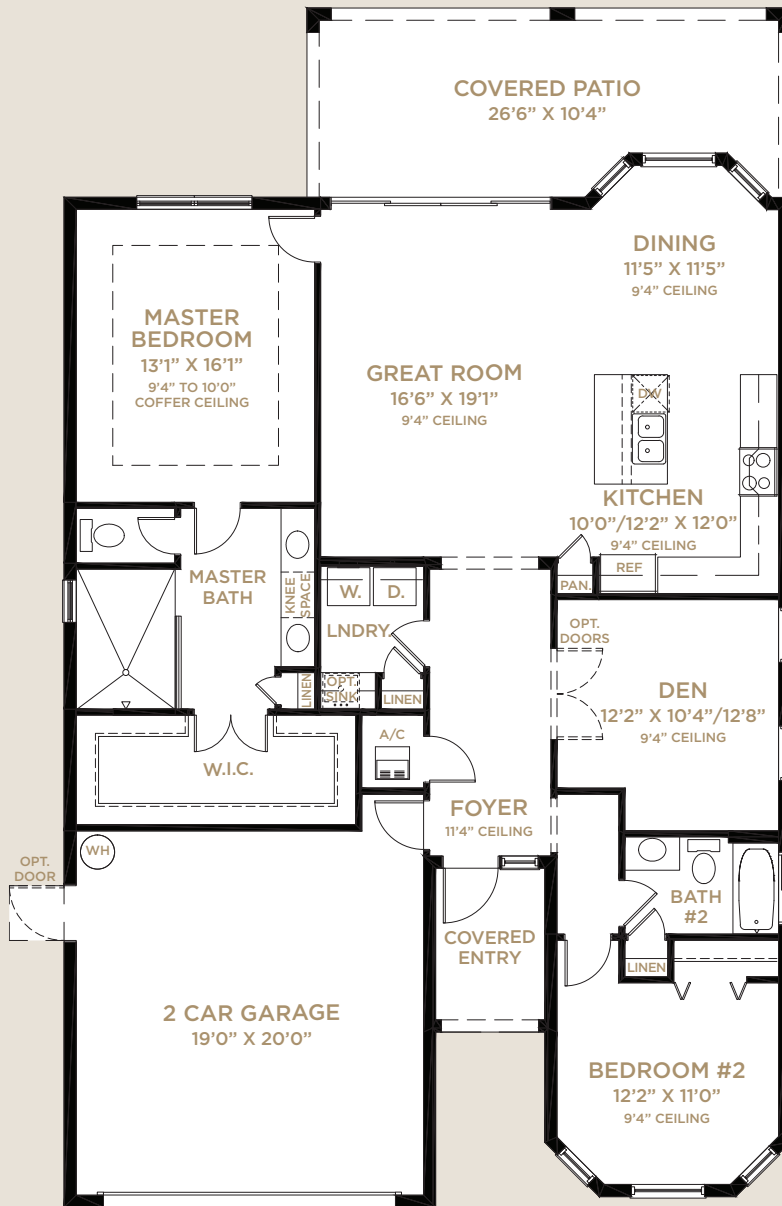
2 Bedrooms, 2 Baths, Den, 2-Car Garage



ELEVATION A



ELEVATION B



SEASIDE

Total - Living	1,668
Garage	426
Covered Patio	252
Covered Entry	54
Total	2,400



COASTAL COLLECTION

WATERVIEW

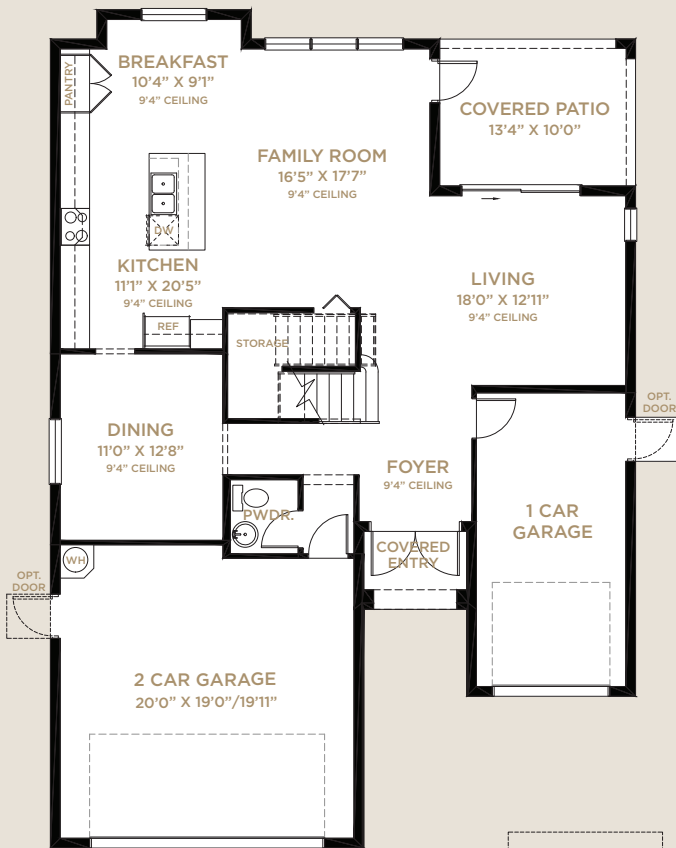
3 Bedrooms, 2.5 Baths, Loft, 3-Car Garage



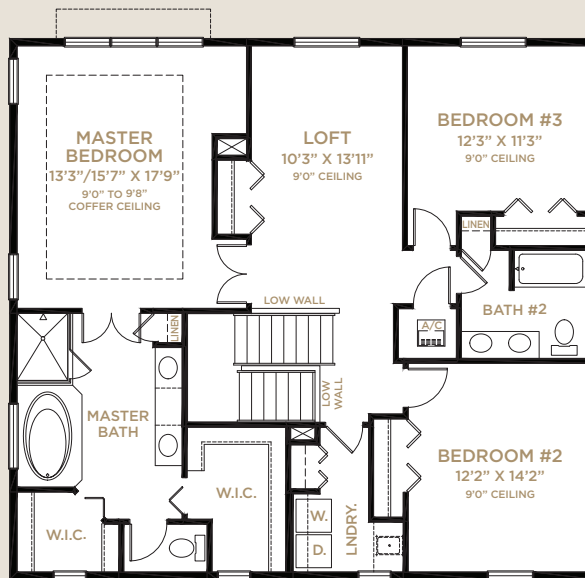
ELEVATION A



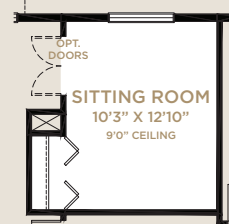
ELEVATION B



FIRST FLOOR



SECOND FLOOR



WATERVIEW

With 3-Car Garage

First Floor	1,149
Second Floor	1,403
Total - Living	2,552
2-Car Garage	432
1-Car Garage	231
Covered Patio	133
Covered Entry	37
Total	3,385

With Bed. #5 or Media Rm.

First Floor	1,380
Second Floor	1,403
Total - Living	2,783
2-Car Garage	432
Covered Patio	133
Covered Entry	37
Total	3,385

MINTO CREATES BETTER PLACES TO INSPIRE LIFE

For over half a century, the Minto name has represented integrity, financial strength and enduring value.

A family-owned business, Minto constructed its first home in 1955, and over the ensuing five and a half decades has grown into an integrated real estate development, construction and management company with operations in Ottawa, Toronto and Florida.

Minto creates a wide array of award-winning new homes and places to meet every lifestyle.

A leader in environmental

sustainability, Minto builds energy and resource efficient homes and communities for a healthier environment. We understand what makes communities special; innovative living environments with state-of-the-art design.

These are just some of the elements that set Minto apart and have earned us national recognition by J.D. Power and Associates, Leadership in Energy and Environmental Design (LEED) and many others.

Discover the Minto difference to a... Better Home... Better Value... Better Life.



The Community Pool at TownPark

INCLUDED PREMIUM FEATURES


YOUR TRADITION LIFESTYLE

- Premier St. Lucie County location
- Top rated schools
- Convenient to shopping, services, employment & transportation - in the heart of it all
- Great downtown area with restaurants, Publix, shops and services. Events, concerts and festivals promote sense of community
- Stunning community master plan with lakes, landscaped open areas, retail shopping, office park and Florida Center for Innovation
- Neighborhood parks & trails

YOUR TOWNPARK NEIGHBORHOOD

- Tradition's premier community
- Prestigious entry features, landscaping and gated entry
- Beautiful master-planned pedestrian-friendly community with lakes, preserves, landscaped open areas and sidewalks on both sides of the street
- Exquisite Club and Recreation Center with:
 - State-of-the-art fitness center
 - Screened lanai for social gatherings
 - Billiards Parlor
 - Resort-style swimming pool
 - Waterworks area
 - Tennis Courts
 - Basketball Courts
 - Bocce Ball Courts
 - Horseshoes
 - Pickleball Courts
 - Multimedia room with television, computer stations & library
 - Activity room with card tables
 - Wet bar & Coffee station
 - Playground
- Decorative street lighting

YOUR ENERGY SAVING FEATURES

- Neighborhood, home design and construction for energy efficiency & sustainability
- New homes designed and constructed to meet the following agency standards
 -  - Energy Star® Partner
- Energy efficient double pane insulated low-emissivity windows, sliders and glass doors for improved energy performance, comfort and savings
- High efficiency **Carrier**® central air conditioning & heating
- **Honeywell**® 7-day programmable thermostat
- Environmentally safe R410A refrigerant
- Energy efficient 50-gallon quick-recovery **Rheem**® water heater
- Energy Star® rated **GE** refrigerator and dishwasher
- Energy Star® rated **Broan**® bath exhaust fans
- Energy saving compact fluorescent light bulbs
- Architecturally accented, 8' tall **Plastpro**™ insulated fiberglass entry door for extended weather resistant life
- R-30 insulated ceiling & R-4.1 exterior walls
- **Moen**® water saving plumbing fixtures
- Luxurious **Armstrong**® stain-resistant, environmentally friendly low VOC carpeting with high performance carpet cushion
- Smoke/carbon monoxide detectors at each bedroom for your peace of mind
- 25 cubic foot **GE** Energy Star® side-by-side refrigerator with in-door ice and water
- Exterior vented **GE** microwave
- **GE** Energy Star® sound insulated automatic dishwasher
- Comfort height water saving elongated water closets

INCLUDED PREMIUM FEATURES

YOUR HOME

- Inspired elevations with elegant architectural appointments
- Covered entry and patio
- Professionally designed landscaping and fully sodded homesite
- Elegant brick paver driveway, entry walkway and covered patio
- Decorative garage coach lights
- **Color Wheel**® Flex Lox exterior paint for lasting color retention and weather protection
- **CertainTeed** architectural 30-year designer asphalt roof shingles
- **Schlage**® satin nickel handleset
- **Schlage**® satin nickel levers on interior doors
- **Schlage**® entry deadbolt lock & door viewer
- Waterproof exterior electrical outlet and exterior hose connection for your convenience
- Entry door chime

YOUR PEACE OF MIND

- Design & construction in accordance with rigorous wind resistive requirements of Florida Building Code
- Steel-reinforced monolithic concrete foundation with vapor barrier
- Professionally engineered reinforced concrete block first floor and wood-framed second floor construction walls
- Smoke/carbon monoxide detectors at each bedroom for your peace of mind
- Security system with 1 keypad and contacts on all operable windows and doors (excludes exterior garage doors)
- 8' tall tempered sliding glass door for your safety
- Professionally engineered truss systems
- Impact resistant embossed steel garage door
- **Sentricon**® termite protection system
- **Taexx**® pest control system

WITHIN YOUR HOME

- Private 2- and 3-car garages with automatic opener and transmitters (per plan)
- Dramatic 9' & 10' ceiling heights on first floor (per plan)
- 18" **Armstrong**® ceramic tile throughout the main floor living areas of your home (per plan)
- **GE** super capacity washer & dryer
- High speed structured wiring network - certified Cat-5E data lines and RG-6 quad shield coaxial cable
- Luxurious **Armstrong**® stain-resistant, environmentally friendly low VOC carpeting with high performance carpet cushion
- Knockdown textured drywall finish on ceilings
- Light orange peel finish on interior walls
- **Color Wheel**® high quality interior paint - zero volatile organic compound (VOC) on walls and low VOC semi-gloss finish on doors and trim
- Decora-style light switches
- 8' tall 6-panel interior doors
- **Schlage**® satin nickel lever-style hardware
- Sculpted colonial wood baseboard and casing
- Air-conditioned walk-in closets
- **Dupont**® window sills
- Pre-wired for telephone, cable TV and ceiling fans in family/great room & bedrooms per plan. Pre-wired for telephone in kitchen (per plan)
- Epoxy coated steel ventilated closet shelving

YOUR KITCHEN

- Expansive kitchen
- Granite countertops with 1½" built-up edge and 4" backsplash
- Wood recessed panel cabinet doors
- Matching designer cabinet pantry or drywall pantry with close mesh ventilated shelving (per plan)

INCLUDED PREMIUM FEATURES

- Recessed lighting with energy-saving compact fluorescent light bulbs
- Stainless Steel **GE** appliances
- 25 cubic foot **GE** Energy Star® side-by-side refrigerator with in-door ice and water
- Free-standing **GE** self cleaning smooth-top electric range
- Exterior vented **GE** microwave
- **GE** Energy Star® sound insulated automatic dishwasher
- Double compartment (50/50) undermount stainless steel sink
- Decorator selected stainless steel **Moen**® faucet with integrated pull-out sprayer
- Waste Disposal

YOUR OWNER'S SUITE AND BATHS

- Raised height vanities with wood recessed panel doors in master and secondary baths
- Custom cultured marble vanity tops with integral sinks
- Pedestal sink in powder room
- **Armstrong**® 12"x12" ceramic tile floors & wet walls in full baths
- Decorator selected **Moen**® brushed nickel faucets in all baths

- Full width mirrors over vanities in master and powder baths with decorator lighting
- Full width mirrors over vanities in secondary baths with decorator lighting
- Comfort height water saving elongated water closets
- Coordinated bath & towel accessories
- Large walk-in closet(s) (per plan)

YOUR MINTO

- Minto - over half a century of innovation, financial strength and integrity
- Award winning community, lifestyle and home designs
- Minto's nationally recognized construction quality
- Minto's exclusive **MasterCare**™ customer care program
- Personalized and convenient home mortgage and title services available thru FBC Mortgage & Founders Title Services
- Three-year **GE** Appliance warranty
- Ten-year structural warranty program

mintogreen

Minto makes living green simple.

For over 50 years Minto has been demonstrating how innovative design can contribute to a healthier planet and improve comfort for our customers.

Minto is committed to creating quality green spaces that inspire our customers and employees to live green.

YOUR NEIGHBORHOOD

GLADES CUT OFF RD.

ST. LUCIE WEST BLVD.

CROSTOWN PKWY.

GATLIN BLVD.

FLORIDA'S TURNPIKE

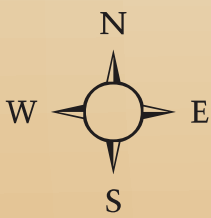
SW BECKER RD.

I-95

- TRADITION SQUARE**
- Hurricane Grill & Wings
 - Johnny V's
 - Sake Sushi Bar & Grill
 - Town Crier Pub and many more

- THE LANDING**
- LA FITNESS
 - TARGET
 - BED BATH & BEYOND
 - T.J. MAXX
 - SPORTS AUTHORITY
 - Olive Garden
 - and many more

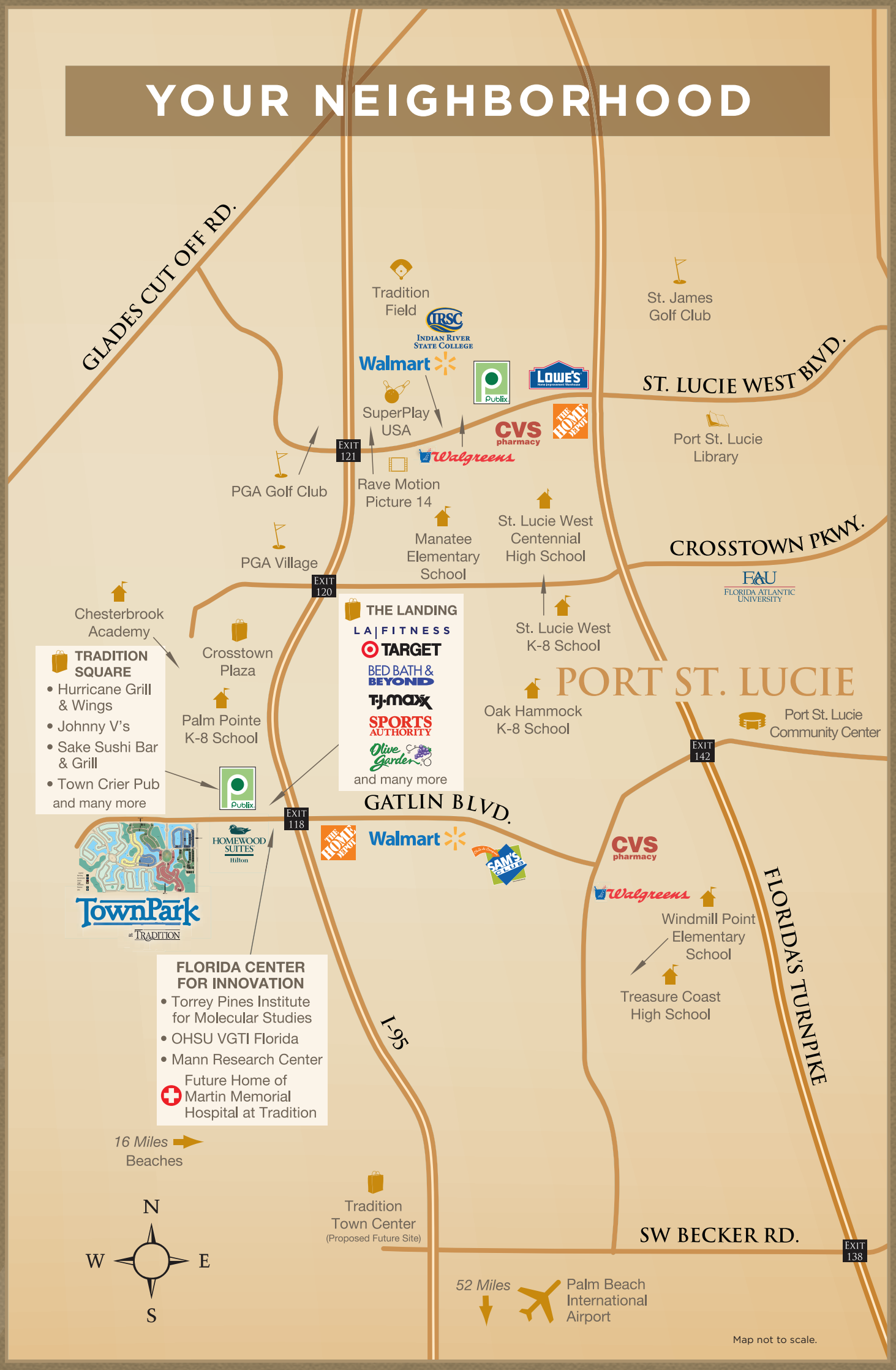
- FLORIDA CENTER FOR INNOVATION**
- Torrey Pines Institute for Molecular Studies
 - OHSU VGTI Florida
 - Mann Research Center
 - Future Home of Martin Memorial Hospital at Tradition



16 Miles →
Beaches

52 Miles ↓
Palm Beach International Airport

Map not to scale.



The Club at TownPark

Incredible Recreational Amenities

TownPark
at TRADITION

