

**minto**

# Dream Homes

## Design Notes

The latest finishings and decorating trends

*Minto Mahogany  
Poplar model*

## Dream Rooms

Inside the model suites at UpperWest and Mahogany

## Expert Q&A

Staying ahead of the curve on green design initiatives

## The Insiders

Meet five talented individuals who make Minto homes unique

**IFC**

# Contemporary Homes. Sustainable Communities.

Welcome to *Dream Homes*. In this edition, we invite you to explore the many innovations that make our homes and communities unique. Insider profiles allow us to introduce just a few of the many talented individuals who use their skills to help us create our award-winning communities, while personal interviews with homebuyers showcase what a Minto home means to the people who have put down roots in their chosen neighbourhoods.

Over the last year, Minto's home designs have undergone a complete transformation. New models with features such as mud rooms, open-concept kitchens, large windows, functional spaces, and spa bathrooms give our homes a contemporary look and feel. A range of design options offers a wide choice of house sizes and layouts, making it easy to find the perfect home for your lifestyle.

Delivering high quality, sustainable homes and communities is one of Minto's core values. Every home and condo is thoughtfully planned and built on a foundation of excellence. And that means beautiful living spaces in healthy, vibrant communities you can feel good about.



**Brent Strachan**  
Senior Vice President  
Minto Communities Ontario



## Contents

**2** **Insiders**  
Meet five of the talented individuals who work with Minto

**8** **Dream Rooms**  
Inside the model suites at UpperWest and Mahogany

**12** **Design Notes**  
The latest finishings and decorating trends

**14** **Homeowners**  
A visit to the Avalon and Arcadia communities

**18** **Expert Q&A**  
What it means to be green

**20** **Calendar**  
Upcoming openings, festivals, and launches

# Conversations with the Specialists

A dedicated team of professionals works behind the scenes to ensure that every Minto community is unique. We talk to five specialists about the roles they play — and what makes their jobs so special.

## Doug Fountain

f.d. fountain landscape architecture



## Donna Correy

KISS Design Group



## Doug Brooks and Marc Thivierge

Barry Hobin & Associates Architects Inc.



## Pierre Dromaguet

Potvin Kitchens & Cabinetry



PHOTOGRAPHY RÉMI THÉRIAULT



**PRESERVATION PLAN** When planning the Mahogany community, Minto made sure that this hedgerow was preserved. The trees would originally have been planted to delineate the property line between two farms and the boulders would have ended up piled here when they were cleared from the fields.



**GIMME SHELTER** The gazebo, situated in a well-kept park just within the entranceway to the Mahogany community, is a quiet spot to sit and chat.



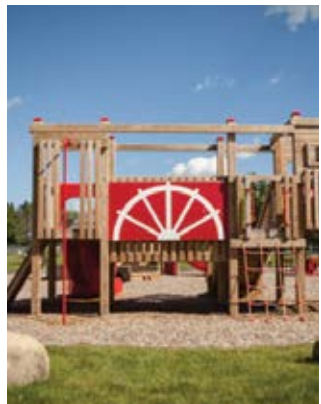
## Doug Fountain f.d. fountain landscape architecture

The importance of beautiful streetscapes, parks, and landscaping goes far beyond mere eye candy. For Doug Fountain and his team at f.d. fountain landscape architecture, these elements change the very nature of a community, adding value and encouraging residents to explore and enjoy their natural surroundings. For a decade now, Fountain has been working with Minto, planning parks and ponds, leafy town squares, and quiet walking trails. When Manotick's Mahogany community was being designed, Fountain was there from the early days, working on a comprehensive plan that includes cohesive streetscapes. He even has planting suggestions for flowerbeds depending on which way a house faces and how shady the area is.

Because this area once incorporated natural fields, it has a number of unique features, including a shady hedgerow of pines and quite a few mature trees. Minto felt it critical to preserve this hedgerow to be in keeping with the vision for the community. Mature maples and oaks were protected for the enjoyment of future residents.



**WELCOME SIGN** This sign, made of Corten, a weathering steel that forms a stable rust-like appearance when exposed to the elements, welcomes homeowners and visitors. Its appearance is subtle and tasteful, in keeping with the community's village-like feel.



**MEETING SPOT** Known as Major W. Ross Chamberlain Park, the community play area has a nautical theme as a nod to nearby Mahogany Harbour. The spacious recreation area incorporates trees, pathways, a soccer pitch, and a shade shelter. Kids love climbing on wooden play structures and this one will give parents ideas for building more modest versions in their own backyards.



**ALL ABOARD** The centrally located park includes two multifaceted play structures geared toward children of different ages. A pavilion at the edge of the play area allows parents to converse in the shade while watching their children run and climb.



**SITTING PRETTY:** Donna Correy relaxes in the sitting room of the Poplar model home, situated just down the street from this year's CHEO Dream Home.

## Donna Correy KISS Design Group

For close to 30 years, Donna Correy and her team at KISS Design Group have been working with Minto, planning the furniture and finishings for model homes in Ottawa. Correy has also had the opportunity to design the CHEO Dream Home for almost 20 years, creating the luxurious rooms visited by thousands of Ottawa ticket buyers every season. Each Dream Home is more lavish than the last, and this year, Correy has imagined a retro-contemporary masterpiece. Many of Correy's innovative ideas will also be on show in Minto's new model homes opening in Arcadia and Avalon in 2015.

Correy says she used the structure of this year's Dream Home as a jumping-off point, taking inspiration from the beautiful volume of the elegant semi-circular staircase that winds its way through the space, as well as from a striking two-storey fireplace that draws the eye upward in the open family room. "I used these two key elements to inspire ideas that then branch off to all the rooms," she explains. The finished look — so polished — combines traditional with contemporary and pairs a neutral soft grey palette with intense accents of lime green and fuchsia.

**BACKSPASH TILE** Subtle and classic, this herringbone pattern is repeated in accents throughout the CHEO Dream Home.

**HARDWOOD FLOORING** Herringbone floors have a rich history as a traditional floor pattern in Europe. The pattern is used in the living room, dining room, and home office in the CHEO Dream Home.



**FOYER CHANDELIER** The first thing you see as you enter the house, this crystal chandelier is both elegant and contemporary.



**RETRO GLAMOUR** When Donna Correy and her team at KISS Design were planning the home office, they envisioned a room in which a woman might love to work. Glamorous and feminine, the CHEO Dream Home office mixes cool with fun. It also boasts a distinctly European flair, with dark herringbone floors and this lavish pink and grey wallpaper in a traditional motif. "We know that many women now work from home," explains Correy. "With that in mind, we wanted to create an office that was really light and bright — a room that would be enjoyable to spend time in."



**Marc Thivierge:  
Inside Minto@lansdowne**

Marc Thivierge has worked on the three Minto communities since Barry Hobin and his team prepared the first sketches. From concept to renderings to construction, Thivierge is responsible for tracking the projects to make sure everything runs smoothly. "From start to finish, there has to be someone who knows a project inside out — who can answer any questions that come up along the way," he explains. We pay attention to detail. Most often it's the little things that matter and can impact a project in a very big way. From re-thinking the sequence of how a component or an assembly is put together, to a simple colour variation of a material, everything is considered carefully and evaluated along the way.

**HIGH LIFE** The Rideau (above) is a landmark condo at Lansdowne Park, with incredible views in all directions and a prime location next to the stadium beside the canal in the Glebe, and a host of other attractions.

**GATHERING SPOTS** The second floor of The Rideau boasts a "sports box" (below), a spacious gathering spot in which condo owners can get together to watch sporting and cultural events at the stadium. On the third floor, an outdoor terrace overlooks the canal for outdoor entertaining.



PHOTOGRAPHY LUTHER CAVERLY



Marc Thivierge (left) and Doug Brooks (right)

**Doug Brooks and Marc Thivierge**



Barry J. Hobin & Associates Architects Inc.

The revitalization of Lansdowne Park is one of the most exciting transformations to take place in the downtown core in decades. To honour the site's status, Minto Communities teamed up with Barry J. Hobin & Associates Architects to design the prestigious residential buildings that anchor key corners of Lansdowne. Minto@lansdowne includes 118 Holmwood, 9 storeys of condos set atop the new Sporting Life store; The Rideau condo, with 360-degree views of the new stadium, the Gatineau hills, canal, and Dow's Lake; and Towns on Holmwood, a well-designed mix of single and stacked townhouses along the residential street bordering the site. This vibrant new neighbourhood is ready to take its place at the heart of the Glebe as the buildings take shape and the urban green spaces are completed.

**Doug Brooks:  
Inside The Rideau**

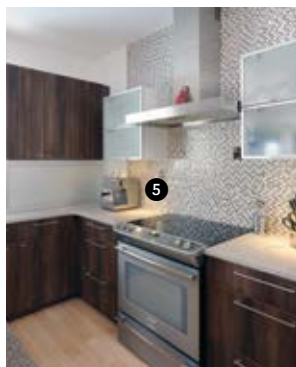
As senior architectural technologist, Doug Brooks must be very detail-oriented, coordinating this exciting new Minto project. The Rideau incorporates two-storey condos at canal level, with condo suites above. Managing everything from the integration of the structural and mechanical systems to the materials to the many experts working on the project calls for him to be "both patient and forthright," says Brooks.



# Pierre Dromaguet

Design and Retail Supervisor at Potvin Kitchens & Cabinetry

When Pierre Dromaguet set about customizing his own kitchen a few years ago, he used the process to experiment with different products and themes. Many friends found it surprising that one of his key decisions was to forgo wood cabinets in favour of PVC. “I wanted to prove that it doesn’t have to be wood to look beautiful and have a high-end feel,” he notes. He also chose a slab design for the cabinetry, creating a more contemporary sensibility that is rapidly catching on in Ottawa. In his work with Minto, Dromaguet oversees the cabinetry design process as well as giving input on kitchen layouts. He has incorporated many of the design ideas and flexibility on show into Minto’s new homes. “Because we focus on kitchens, we’re always seeing fresh ideas and can also promote new products that we think are great.” Most recently, the Potvin team has been working on all the new kitchen designs for the upcoming model homes in Arcadia and Avalon.



- 1 When Dromaguet is designing a kitchen space, he tries to incorporate as much natural light as possible.
- 2 The island provides prep space and acts as a gathering spot for the family.
- 3 Dromaguet chose Zodiaq (an engineered stone) to top this island because he was looking for a uniform appearance and “less presence.” He says homeowners might also choose other options like Corian or granite depending on the look they want to achieve.
- 4 The more contemporary look of slab cabinetry is becoming increasingly popular and is an option in many Minto homes.
- 5 Dromaguet favours the full wall backsplash because it places the emphasis on the most important area of the kitchen — the stove.

**DOUBLE DUTY** Setting up a computer station in the kitchen is an increasingly popular trend as parents seek to monitor their children’s computer usage and homework. Dromaguet says it’s fairly straightforward to integrate the computer station into the room, but he stresses that the space should be multi-functional. He notes that the height of this “desk” is set at the same height as the surrounding countertops so that it can also serve as a food prep area. As for Dromaguet, when he hosts a party, the computer is put away and the homework spot morphs into a bar station.



# UPPERWEST westboro

**CONSTRUCTION STARTS  
THIS NOVEMBER!**

**LAST CHANCE FOR  
PRE-CONSTRUCTION  
PRICING!**

A landmark community nestled by the Ottawa River and surrounded by 25-acres of protected parkland. Timeless design, priceless location, a once-in-a-lifetime opportunity. Great selection of suites still available ranging from 532sq.ft. 1 bedroom suites up to 2,052sq.ft. 3 bedroom suites and towns.

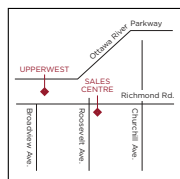
Own in Westboro for only \$1100 a month\* including locker, less than rent!

CONDOS FROM THE MID

**\$200's\***

## YOUR DREAM CONDO AWAITS!

- Outdoor Terrace with fireplace and water feature
- Dining Room and Lounge with floor-to-ceiling windows
- Movement Haus gym with state-of-the-art equipment



### VISIT THE SALES CENTRE TODAY!

400 RICHMOND RD. | 613 788 2786

Mon - Thurs: 12PM - 7PM,  
Closed Friday, Sat & Sun: 11AM - 5PM

[LIVEUPPERWEST.COM](http://LIVEUPPERWEST.COM)

\*Prices and specifications are subject to change without notice. Conditions apply, see Sales Representative for details. Carry for price based on 15% deposit including incentives. Rendering is artist's concept. E. & O.E.



CANDEREL

# Modern Classic



The kitchen in the model suite at **Minto's UpperWest** condo in Westboro boasts a dramatic and sophisticated look, courtesy of principal designer **Carmen Dragomir of esQape design**. Dragomir, who has won a number of prestigious awards for her designs, created the gorgeous space after spending time in Westboro to get a sense of the neighbourhood. "I picture who will be living in this condo and in this unique area, and my design flows from there," she explains.

**What was the thinking behind the colour palette?** There are always many design options for every suite. I start designing every condo with the owner in mind. I envisioned the owners of this suite as a couple who have chosen to relocate from a house to a condo while still keeping a few of the furniture pieces they're comfortable with. The color palette is neutral to allow for a wide variety of furniture and furnishings.

**So you are envisioning downsizers moving into this condo?** I don't think of it as downsizing. I think of it as right-sizing. The new owners are probably moving from a larger space to a smaller one so I try to create rooms that can be multi-functional. For instance, in this particular model the second bedroom can easily be designed as a guest bedroom or a family room. The open den area is another example of multi-functionality — whether you use it as a home office or as a library, having built-ins help you maximize the wall space. The design approach can easily change based on how you use the space.

**What are your favourite design elements?** The view from this suite, which is out over the Ottawa River, is one of my favorite focal points. The design and decorating of the "open area" rooms, including the kitchen, was done to maximize views of the river, sky, and green spaces.

**How do you imagine this kitchen being used?** I think linear kitchens are wonderful when cooking is not just a daily chore but a passion. They are great for entertaining and for spending precious moments with family and friends. The layout allows for generous traffic flow. You could have a dinner party for six and still feel like there's plenty of space to move around. The cabinetry is designed for ease of access to all the storage spaces and appliances. Of course, you do need to keep it tidy because an open kitchen is visually part of the entire space.

**Explain your choice of the bold granite for the island and backsplash.** This is one of my favorite granites. It has a bold and very interesting texture. While white and taupe/grey is a very hot combination, it also works well with either dark or white cabinets, and when the right granite slabs are selected, it can actually make quite a statement — especially in a linear kitchen. The island's waterfall countertop completes the look.



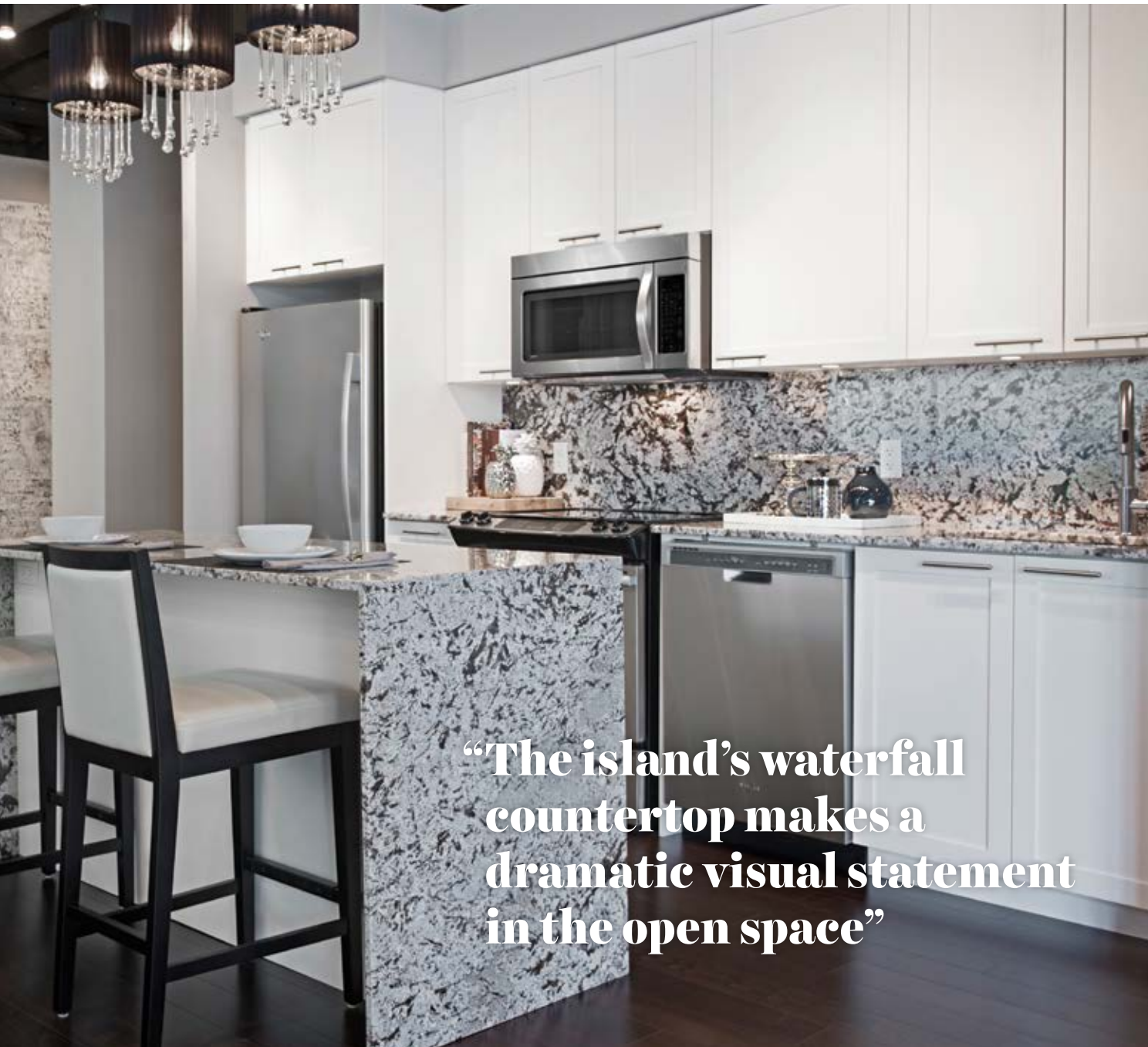
View facing north



PHOTOGRAPHY COLIN ROWE



View facing north-west



**“The island’s waterfall countertop makes a dramatic visual statement in the open space”**

# Polished Elegance



Step into the kitchen in the **Poplar model** at Minto's **Mahogany community** and it's the backsplash that immediately commands attention. "Everyone's dazzled with the cooking wall," says **Tracey Woodman of KISS Design Group**. "It has such a presence. It's a wall of sculptural glass art." The design was inspired by the warmth of a classic French kitchen, but updated with effervescent accents that add pop and sparkle. "The whole home has a French country vibe — but modernized, and with a splash of elegance."

**What themes inspired this room?** The Mahogany community is in Manotick, so it's a country setting. With that in mind, we decided on a kitchen with a French country feel to it. The whole home has a French country vibe — but modernized, and with a splash of elegance. This house — and this kitchen — is also designed with a family in mind. We imagined an active family that wants to live in outside the city, but with the amenities of an urban setting. So the kitchen has lots of great features for someone who likes to cook.

**How did you choose the colour palette?** The room has a crisp, clean feel that a classic kitchen would have. It's clean and white around the perimeter, but there are notes of warmth. The warmth comes in the caramel colouring of the wood on the island and from the warm tones in the backsplash, which glimmers.

**How did you choose the backsplash?** The sparkle of the backsplash is juxtaposed with classic, oversized white subway tile everywhere else in the kitchen. That tile has been a favourite of ours at KISS Design, and the Poplar model is that special space we were looking for to try it out.

**Tell me about the unique island.**

It's a custom-designed piece that was made by Potvin Kitchens. We gave it a warm finish with the walnut. The counter is Corian, which also has a soft, warm element to it.

**How do you imagine this room being used?** If I was living in this house, I'd have amazing wine tasting parties here. I'd set up all the wines on the island and a big selection of hors d'oeuvres. There's a lot of surface space for food preparation, so I could also see a family using it and entertaining. It's very functional.

**What is your favourite design element?** I love the pendant lights. They're made of mercury glass, which has an element of sparkle and mirror finish to it. But the shape of the light is very classic. There's an old French chateau feel. However, the sparkle of the mercury glass is fresh and modern and effervescent.



PHOTOGRAPHY COLIN ROWE



**“The cooking wall has such a presence. It’s a wall of sculptural glass art”**

## DESIGN NOTES

**Quality Materials** There are infinite ways to personalize your new home. From your fireplace stone and your kitchen cabinet doors to the spindles on your stairs and the faucets on your master bathroom sink, choices range from traditional to transitional to contemporary. Every new homeowner works with a professional interior designer on the Minto team to achieve their dream design. Minto Design Centre manager Candice Logan highlights the latest finishings and decorating trends.

**Cool Surface** Logan is a big fan of Corian counters, which look rich and luxurious but are easy to repair — and you can choose from dozens of colours.



**Look Up** The majesty of tray ceilings and more ornate coffered ceilings are popular options for giving a home a traditional feel, says Logan, particularly when they are paired with arched doorways flanked by columns.



The Poplar model in Mahogany.

**High Hopes** Dreaming of an Arts-and-Crafts-style home? Drift off to sleep beneath a cathedral ceiling accented with rustic wooden beams in the master bedroom of the Walnut model, available in Manotick's Mahogany community.



The Walnut model in Mahogany.



**Hot Stuff** Now we're cooking: when it comes to stoves, "people definitely prefer gas to electric," says Logan. The Design Centre offers several sleek gas ranges.

**Curve Appeal** Delta's stylishly arched Trinsic kitchen faucet is high enough to accommodate large pots, and the pull-down spray wand reattaches with magnetic technology. Finishes include chrome, stainless steel, and bronze.



**Tile Style**

Looking to make a modernist statement on a feature wall? Be sure to ask about the fun selection of unglazed porcelain wall tiles subtly printed with photos, drawings, and text evoking cities like Sydney, New York, or Madrid.



**Extra Special** Minto's two newest communities — Arcadia in Kanata and The Enclave at Trailsedge in Orléans — offer homebuyers a variety of attractive new options, particularly in the larger models. Choices include main-floor laundry rooms, nine-foot ceilings, and multiple walk-in closets.

## HOMEOWNERS



PHOTOGRAPHY GORDON KING

**The Châteauvert family is living the dream in Minto's Avalon community,** where three generations reside within 15 minutes' walk of one another — each in a house or condo flat that suits their lifestyle and stage of life. On this day, the family gathers in Denis and Julie's backyard to share a drink and talk about their homes and community.



## Next Generation

**THE SETTING** Now over a decade old, Minto's perfectly planned community of Avalon continues to grow. Located in OrLéans, the neighbourhood is prized by residents for its quiet streets, pocket parks, and ponds. Avalon continues to expand, adding an ideal mix of complementary housing types to appeal to a variety of home buyers.

**WHO** Denis and Julie Châteauvert; daughter Andrée Grégoire, son-in-law Philippe Grégoire, and baby Bianca; and daughter Dominik Châteauvert

**WHERE** Avalon

**“Everything is within walking distance. We couldn't ask for better”**

When Denis and Julie Châteauvert bought the elegant Pearson model single home in the Avalon community, it was the beginning of a Minto tradition. Twelve years later, both of their daughters own Minto homes in Avalon and the entire family is within walking distance of one another. Daughter Andrée and son-in-law Philippe both grew up in the close-knit community and knew they would one day have their own home here. Four years ago, they bought a Minto town home, choosing the spacious Manhattan model with room to accommodate their growing family. Daughter Dominik looks forward to moving into her cozy Alto condo flat in December.

Denis Châteauvert says that while his home is special, the surrounding community is equally exceptional. The family enjoys the nearby parks and walking on the trails around the lake. “Minto did a great job planning all the green areas. They are really nice,” he says. “And it's such a safe community that you feel very comfortable.” Julie adds that she loves having such wonderful neighbours. For Andrée and Philippe, the abundance of nearby schools is an Avalon advantage, while Dominik chimes in that the neighbourhood is close to shopping and restaurants.

For the Châteauvert and Grégoire families, their Minto homes and community are the perfect fit in Avalon.





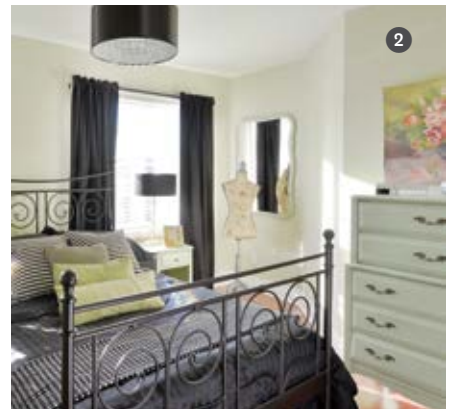
1

1 Denis and Julie Châteauvert love the elegant staircase, which spirals from the basement through to the second floor.

3 The Châteauverts, who enjoy hosting parties, appreciate their roomy gourmet kitchen and dining area.

2 When the girls were growing up, the family was happy that the Pearson model was roomy enough that everyone had their own bedroom and bathroom.

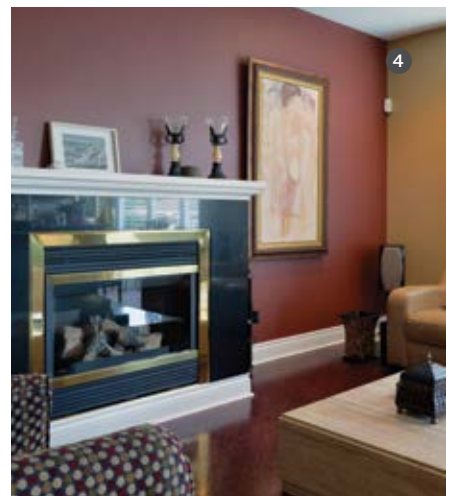
4 A gas fireplace and warm paint tones make this den a cozy spot to spend time.



2



3



4

# Sister Act

PHOTOGRAPHY GORDON KING



**“There’s a mix of young people and young families. It’s really vibrant”**

**THE SETTING** When Jamie and Shannon Keeley made the decision to buy their first home, they immediately zeroed in on the Arcadia community in Kanata, drawn by its proximity to family and friends — and to exciting new retail outlets.

**WHO** Jamie and Shannon Keeley

**WHERE** Arcadia

It’s hard to believe that Jamie and Shannon Keeley have lived in their new semi-detached home for just six months. Already, it is impeccably furnished throughout, a testament to the sisters’ artistic sensibilities — and practical natures. Both love searching out rustic-antique furniture and accessories, often buying items at second-hand stores before refinishing and repainting them. “We’re very do-it-yourself,” explains Shannon. “And we have the same taste, which helps!”



The Keeleys, who both work in Kanata, know the area well. They grew up in the Katimavik neighbourhood and were renting together in Bridlewood when they heard about Arcadia through friends who had bought into the community. They jumped at the opportunity to buy a quick occupancy home, signing the papers in December 2013 and moving into the Hampton model in March 2014. “It was very overwhelming at the time,” says Jamie. “But also so exciting.” The sisters already have a number of good friends living on their street and are thrilled with their proximity to work, the Canadian Tire Centre, and the new Tanger Outlet. And, though they know at least one of them will likely move on from this house if either marries or starts a family, for now they are living in the moment. “This is our starter, but we’d definitely like to stay in this neighbourhood,” says Jamie.





- 1 Jamie (left) and Shannon in the dining room.
- 2 The living room is the sisters' favourite space. They designed it together, incorporating a mix of furniture items from Value Village and HomeSense. Shannon is skilled at refinishing and repainting their second-hand finds.
- 3 The colour palette throughout emphasizes soft greys and creams. "We wanted it to be soft and airy," says Jamie.
- 4 The charming table and chairs were a HomeSense find. Shannon picked up the display case at Value Village, then refinised and repainted it. Many of the curios are from Gendron Antiques in Stittsville.
- 5 The Keeleys love mixing and matching textures, choosing both the backsplash and counter based on their unique surfaces.
- 6 The basement was designed as a "man cave" in which their boyfriends would feel comfortable. The sectional has recliners at both ends.
- 7 The sisters love the open floor plan on the main level, calling it great for entertaining friends.

# Green Giant

**As a builder of homes, buildings, and communities, Minto is able to make a huge impact on the way we live by designing wisely to conserve resources and to reduce our impact on the environment.** The company's sustainability initiatives have been ahead of the curve and have earned major awards annually, including the BILD Low-Rise Green Builder of the Year, EnerQuality Leader of the Year, and EnerQuality Green Builder of the Year in four of the last five years. At the heart of these innovations is Wells Baker, Minto's manager of sustainable development. We asked him about green design happening now — and what's on the horizon.



©GRAPHY LUTHER CAVERLY

**“Our team continually investigates new technologies, design features, and construction practices”**

**DREAM HOMES:** You manage the sustainability initiatives at Minto. What does the job entail?

**WELLS BAKER:** I'm responsible for the sustainable design strategy on all of Minto's new construction projects. My team contributes to the improvement of our building designs and oversees the third-party certification of our buildings using rating systems such as LEED (Leadership in Energy and Environmental Design) and Energy Star.

**DH:** How did you come into this role?

**WB:** I spent 10 years working as a consulting engineer, designing

mechanical systems for buildings. I have always had a focus on sustainable building design and worked on a number of Canada's first LEED projects before making the move to Minto.

**DH:** Minto continually secures major awards for its green building practices. How do you stay ahead of the curve in terms of sustainable development?

**WB:** Our team continually investigates new technologies, design features, and construction practices in an effort to reduce the environmental impact of our buildings. Our focus is on finding new ways to make our buildings better. Our customers appreciate the improved comfort, healthier indoor



**GREAT LOCATION** Minto Beechwood is at the heart of the vibrant New Edinburgh community and within walking distance of the Rideau River and downtown. It is targeting LEED Silver certification.



environments, and operating-cost savings that these improvements achieve.

**DH:** Minto has a number of projects on the go in Ottawa, from communities to condos. Tell us about sustainability initiatives in the upcoming Minto Beechwood condo project in New Edinburgh.

**WB:** I am really excited about this project. We are incorporating many of the features from our low-rise homes into a mid-rise condo. For instance, each of the suites features a dedicated fresh air supply to provide superior indoor air quality and is individually sub-metered for utility consumption

so residents only pay for what they use. The kitchens use LED lights, which last longer, give off less heat, and use less electricity. We will be targeting LEED Silver certification.

**DH:** Some of Minto's buildings in Toronto have electric-car charging stations. Will this be part of future Minto developments in Ottawa?

**WB:** We have installed electric car-charging stations in the parking garage at Minto Place and are making sure our new condominium buildings in Ottawa and Toronto are equipped with infrastructure to allow 10 percent of residents to install charging stations in their own parking spots.

**DH:** What developments are you seeing elsewhere in the world that you would like to bring to the capital?

**WB:** I was on vacation in Scandinavia earlier this year and was impressed with their use of natural ventilation and other passive design techniques to reduce energy consumption. We have made great strides in using technology to solve problems, but I think we sometimes rely on it too heavily. In future designs, we will be looking at incorporating more daylighting, operable windows, and higher-performance building envelopes in our buildings. These passive design elements don't use power, don't wear out, and keep working for the life of the building.

# Openings, Festivals, and Launches



**COMING THIS FALL**

**Avalon Encore Grand Opening**

Visit us at our new sales centre for the launch of Minto Avalon Encore and new home designs in Orléans. Avalon Presentation Centre, 2370 Tenth Line Road, Orléans. [mintoavalon.com](http://mintoavalon.com)



**MONDAY, SEPT. 15 TO FRIDAY, DEC. 12, 2014** CHEO Dream Home Mahogany by Minto is the newest community in Manotick and home to this year's CHEO Dream Home. Tour Mahogany and the fully furnished grand prize CHEO Dream Home. Purchase a ticket for your chance to win some amazing prizes and support the CHEO Foundation at the same time. A visit to the Dream Home is also a perfect opportunity to gather decorating and design ideas for your own home. CHEO Dream Home hours: Monday to Friday 12-8 p.m.; Saturday, Sunday, and holidays 10 a.m.-6 p.m. Mahogany Sales Centre, 108 Moretto Court, Manotick. [dreamofalifetime.ca](http://dreamofalifetime.ca)



**SATURDAY, OCT. 11, 2014** Manotick Harvest Festival

This community-wide festival is a celebration of autumn. Enjoy displays, wandering entertainers and children's activities throughout the village, as well as pumpkin carving and Halloween face painting at Watson's Mill. Free admission. Hours: 10 a.m.-3 p.m. [manotickvillage.com](http://manotickvillage.com)



**SATURDAY, FEB. 7, 2015**

**HCMCA Winter Family Fun Day** Join the Havenlea-Chapman Mills Community Association at Cresthaven Rink and Park for a wide range of winter activities both on and off the ice, including sleigh rides, a free barbecue, and games! Sponsored by Minto Chapman Mills. 28 Cresthaven Drive, Barrhaven. [hcmca.ca](http://hcmca.ca)

**WATCH FOR IT** Mahogany by Minto:

**New Product Launch** Consider stepping outside the city into Mahogany. The community boasts an eclectic array of modern and traditional homes, pulling inspiration from the rich architectural styles already found in this timeless village. Mahogany Sales Centre, 108 Moretto Court, Manotick. [mahoganybyminto.com](http://mahoganybyminto.com)

**MONDAY, FEB. 16, 2015**

**PSCDA Winter Family Fun Day** Avalon is home to the annual Winter Family Fun Day in Portobello Park. The Portobello South Community Development Association (PSCDA) welcomes kids and families to come play games and enjoy other fun in the snow. Co-sponsored by Minto Avalon. 670 Aquaview Drive, Orléans. [pscda.ca](http://pscda.ca)



PHOTOGRAPHY GERALD LÉCOURS



**COMING IN 2015** Avalon and Arcadia Keep your eyes open for exciting new models in Minto's Avalon community in Orléans and Arcadia in Kanata. [mintoavalon.com](http://mintoavalon.com) and [mintoarcadia.com](http://mintoarcadia.com)

**IBC**

# Back Cover