

Coach Homes  
*Floorplans*



*The Isles*<sup>™</sup>  
OF COLLIER PRESERVE

---

On the south shore of Naples Bay



An elegant *sanctuary* for everyday living.

An extraordinary *setting* for everyday adventures.



© Minto Communities, LLC 2017. All rights reserved. Content may not be reproduced, copied, altered, distributed, stored or transferred in any form or by any means without express written permission. Artist's renderings, dimensions, specifications, prices and features are approximate and subject to change without notice.

**ORAL REPRESENTATIONS CANNOT BE RELIED UPON AS CORRECTLY STATING REPRESENTATIONS OF THE DEVELOPER. FOR CORRECT REPRESENTATIONS, MAKE REFERENCE TO THIS BROCHURE AND TO THE DOCUMENTS REQUIRED BY SECTION 718.503, FLORIDA STATUTES, TO BE FURNISHED BY A DEVELOPER TO A BUYER OR LESSEE.**

Minto, the Minto logo, The Isle of Collier Preserve and the The Isle of Collier Preserve logo are trademarks of Minto Communities, LLC, and/or its affiliates. CGC1519880. 8/17

## THE SABAL COLLECTION



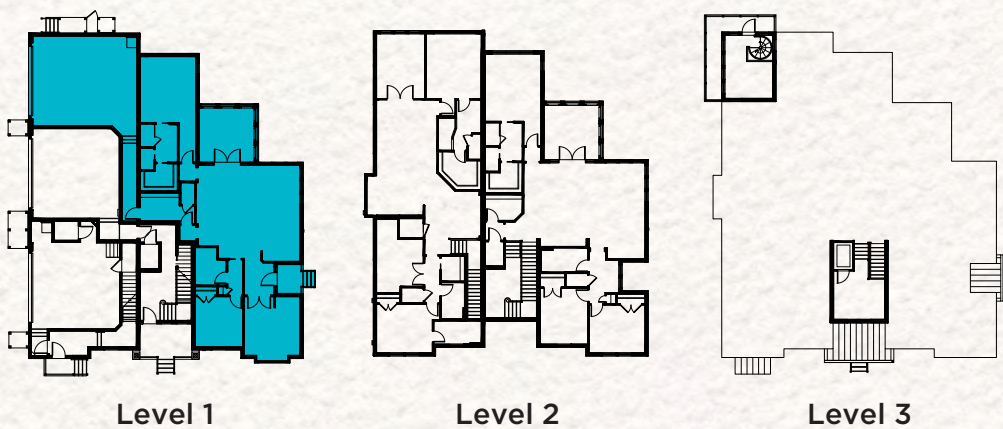


THE SABAL COLLECTION

AZALEA

2 Bedrooms / 2 Baths / Den / Covered Lanai / 2-Car Garage

*The Isles*  
OF COLLIER PRESERVE



Total Living Area	1,621 S.F.
2-Car Garage	634 S.F.
Entry	40 S.F.
Lanai	184 S.F.
<b>Total</b>	<b>2,479 S.F.</b>

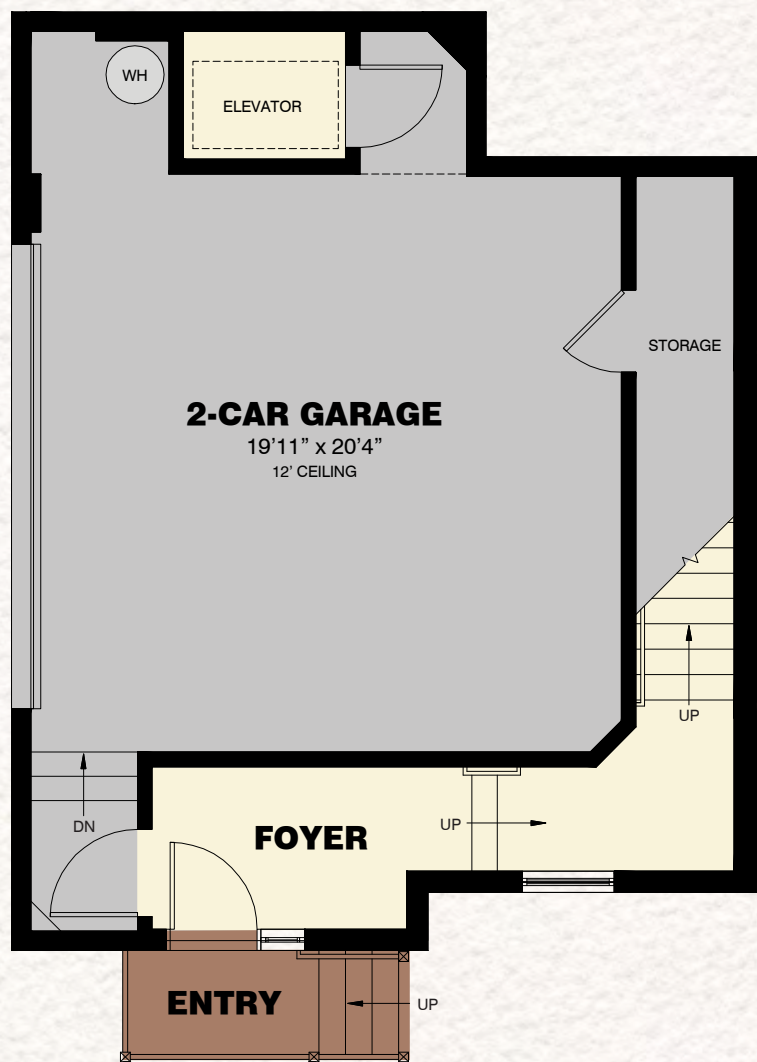


THE SABAL COLLECTION

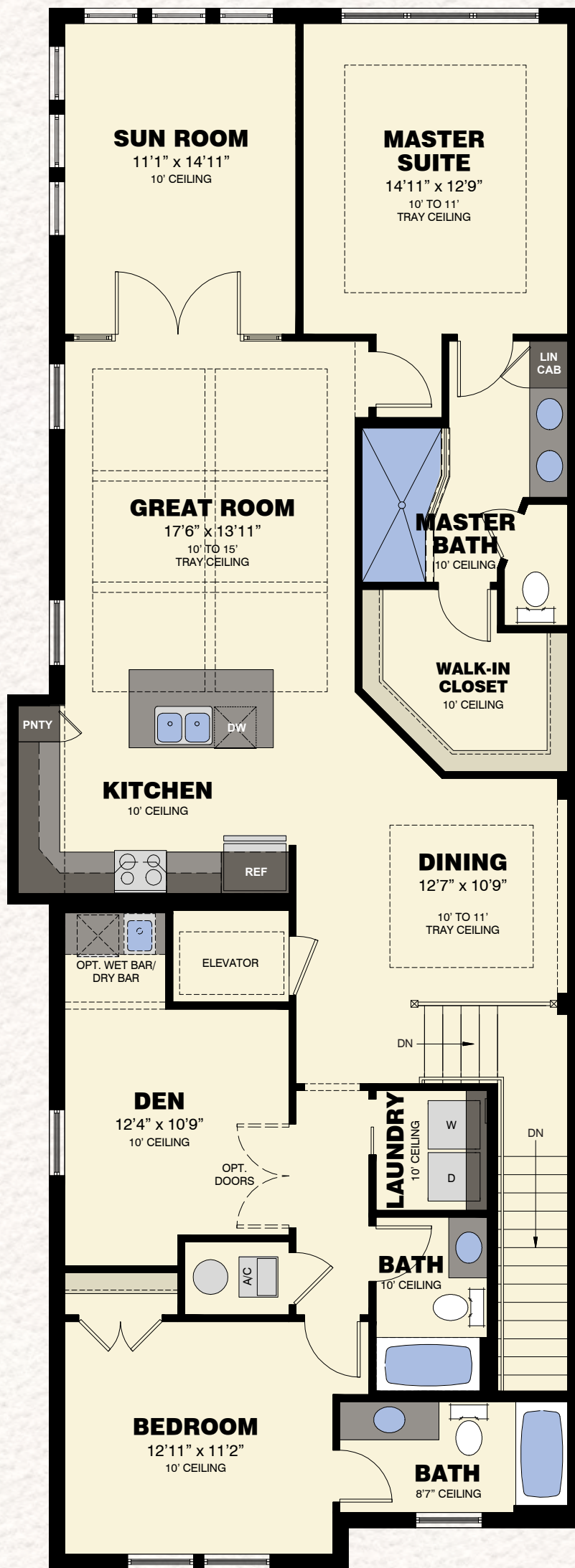
OLEANDER

2 Bedrooms / 3 Baths / Den / Sun Room / 2-Car Garage

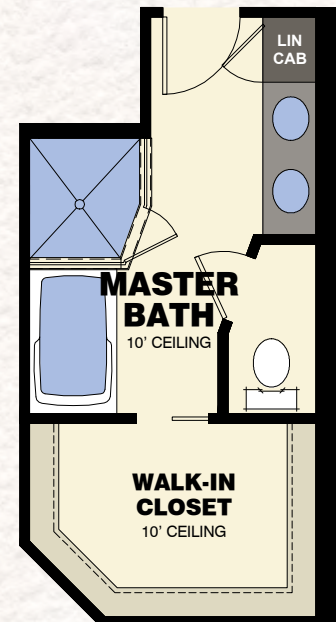
*The Isles*<sup>™</sup>  
OF COLLIER PRESERVE



FIRST FLOOR PLAN



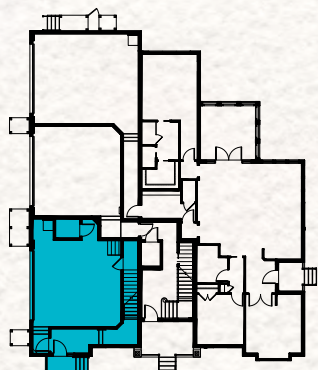
SECOND FLOOR PLAN



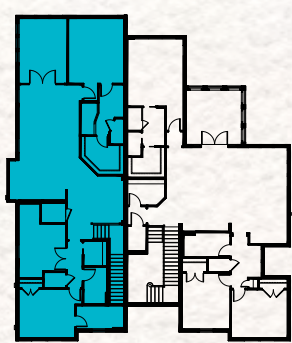
AVAILABLE MASTER BATH VARIATION



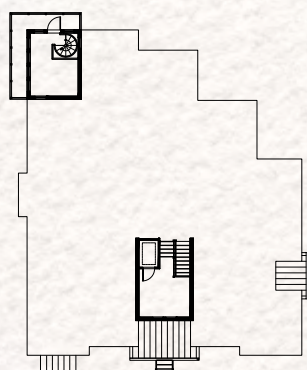
AVAILABLE BEDROOM VARIATION



Level 1



Level 2



Level 3

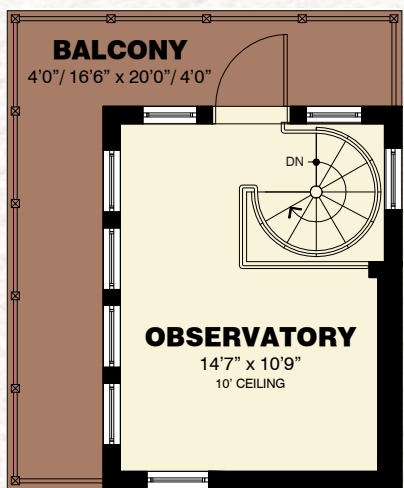
First Floor	144 S.F.
Second Floor	1,843 S.F.
Total Living Area	1,987 S.F.
2-Car Garage w/Storage	557 S.F.
Entry	23 S.F.
Elevator	24 S.F.
Total	2,591 S.F.



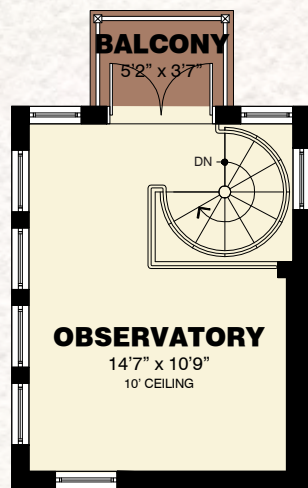
THE SABAL COLLECTION  
OLEANDER GRANDE

2 Bedrooms / 3 Baths / Den / Sun Room / Observatory / 2-Car Garage

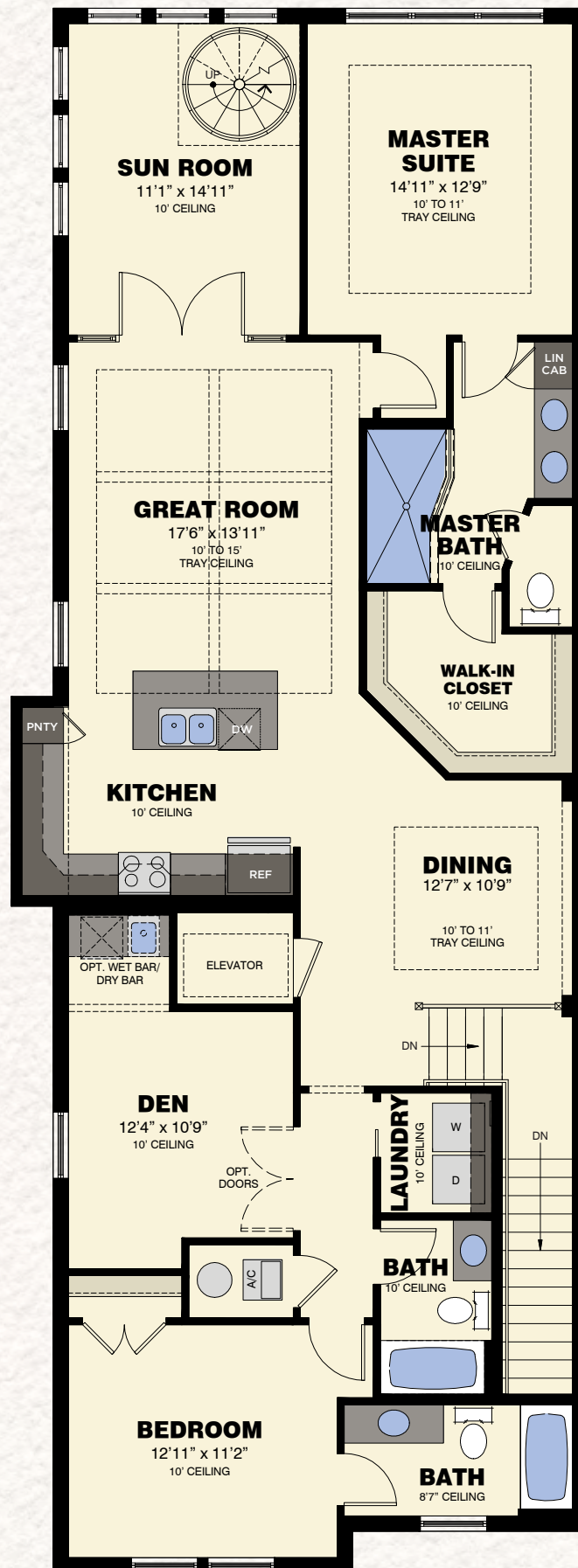
*The Isles*<sup>™</sup>  
OF COLLIER PRESERVE



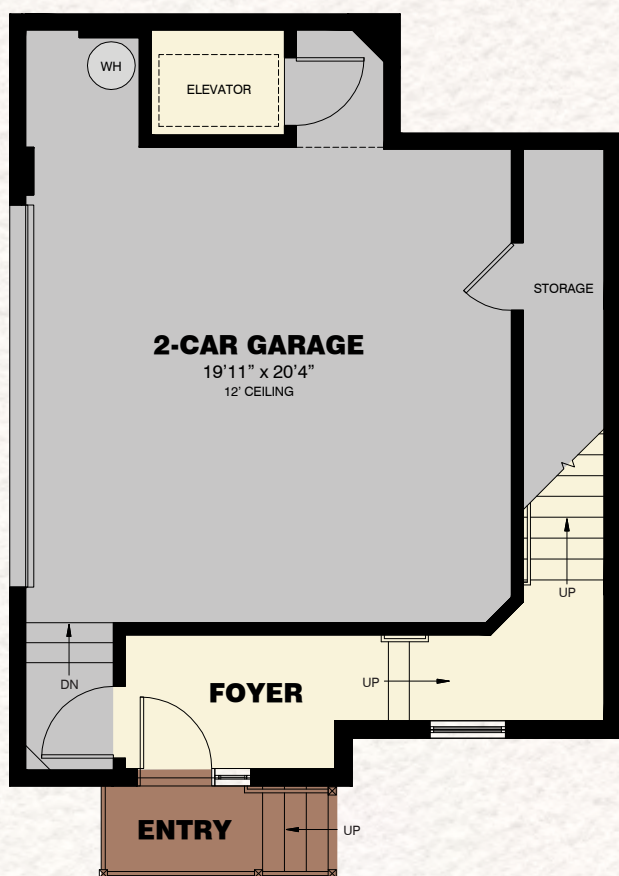
AVAILABLE  
WRAP-AROUND  
BALCONY



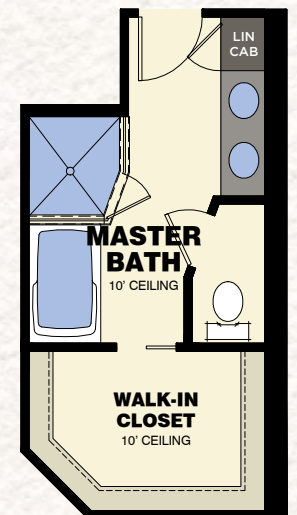
THIRD FLOOR  
OBSERVATORY



SECOND FLOOR PLAN



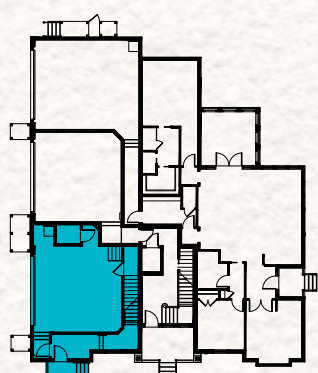
FIRST FLOOR PLAN



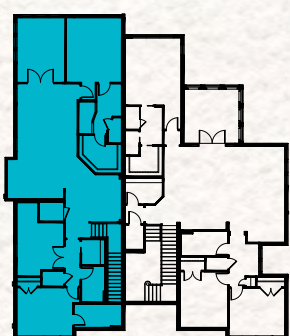
AVAILABLE  
MASTER BATH  
VARIATION



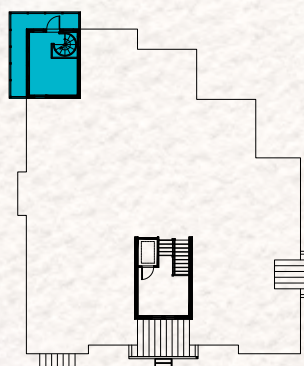
AVAILABLE  
BEDROOM  
VARIATION



Level 1



Level 2



Level 3

First Floor	144 S.F.
Second Floor	1,843 S.F.
Third Floor Observatory	173 S.F.
Total Living Area	2,160 S.F.
2-Car Garage w/Storage	557 S.F.
Entry	23 S.F.
Elevator	24 S.F.
Observatory Balcony	18 S.F.
Total	2,782 S.F.

Optional Wrap-Around Balcony 113 S.F.

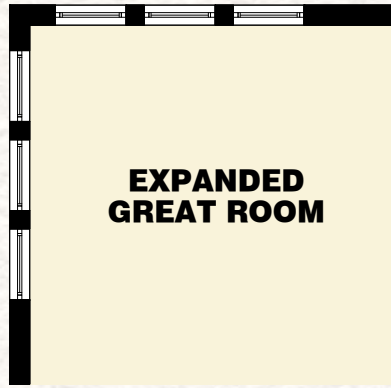


THE SABAL COLLECTION

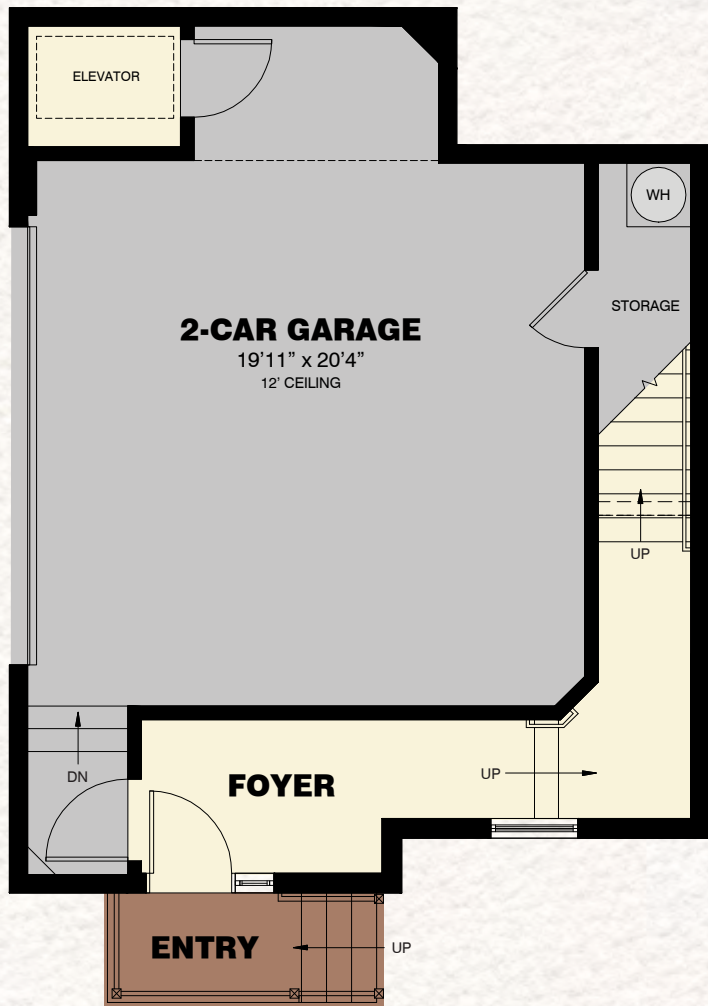
ORCHID

2 Bedrooms / 2 Baths / Den / Sun Room / 2-Car Garage

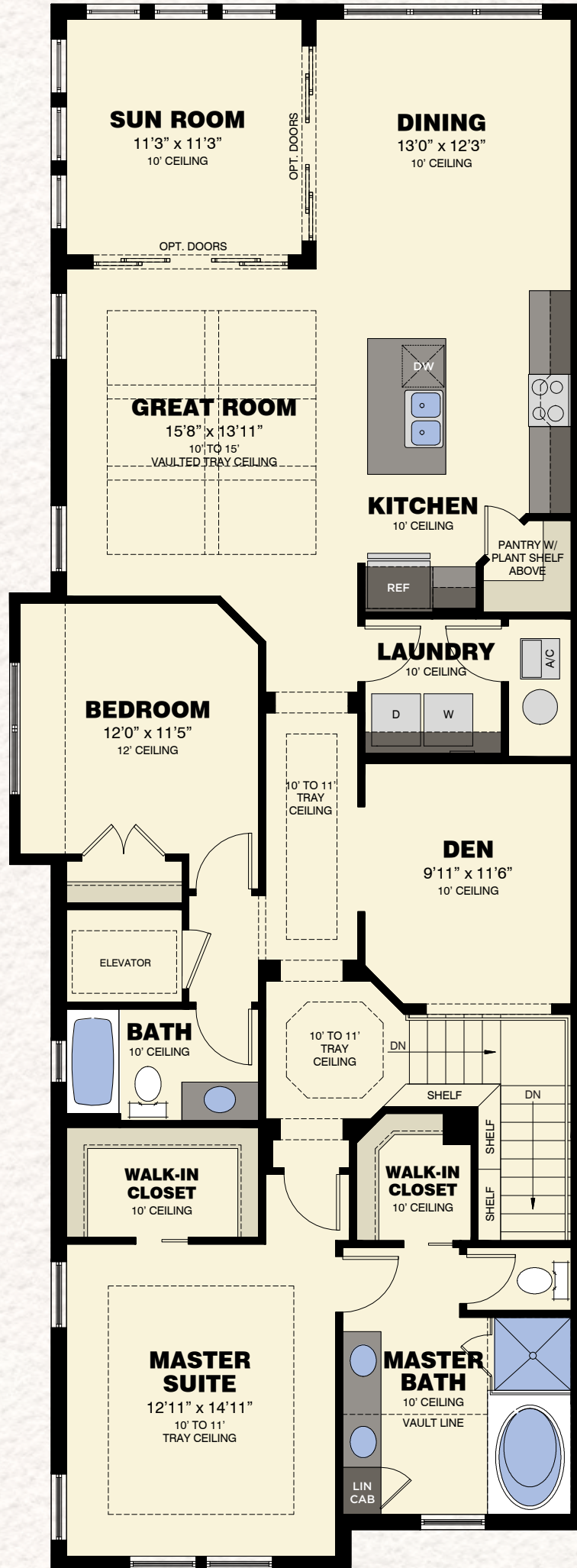
*The Isles*<sup>™</sup>  
OF COLLIER PRESERVE



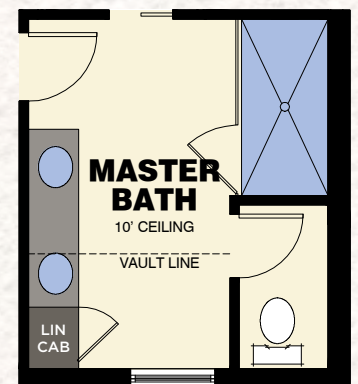
AVAILABLE EXPANDED GREAT ROOM VARIATION



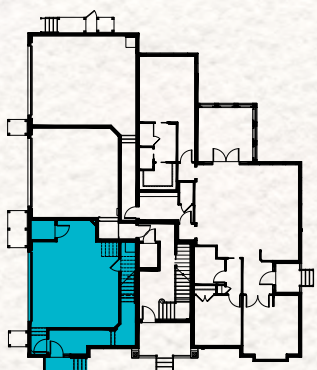
FIRST FLOOR PLAN



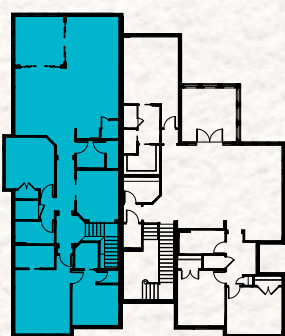
SECOND FLOOR PLAN



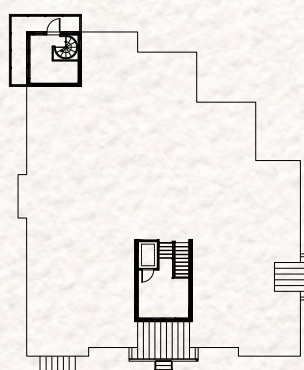
AVAILABLE MASTER BATH VARIATION



Level 1



Level 2



Level 3

First Floor	144 S.F.
Second Floor	1,867 S.F.
Total Living Area	2,011 S.F.
2-Car Garage w/Storage	557 S.F.
Entry	23 S.F.
Elevator	24 S.F.
<b>Total</b>	<b>2,615 S.F.</b>

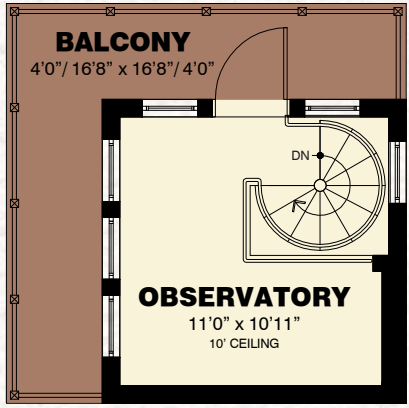


THE SABAL COLLECTION  
**ORCHID GRANDE**

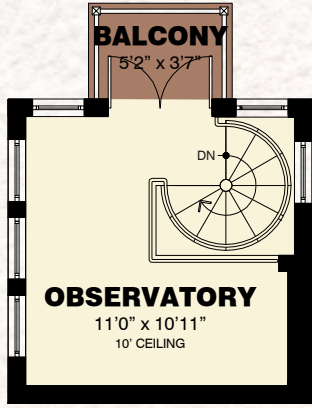
2 Bedrooms / 2 Baths / Den / Sun Room / Observatory / 2-Car Garage

TOUR THIS DECORATED MODEL  
 AT THE ISLES OF COLLIER PRESERVE

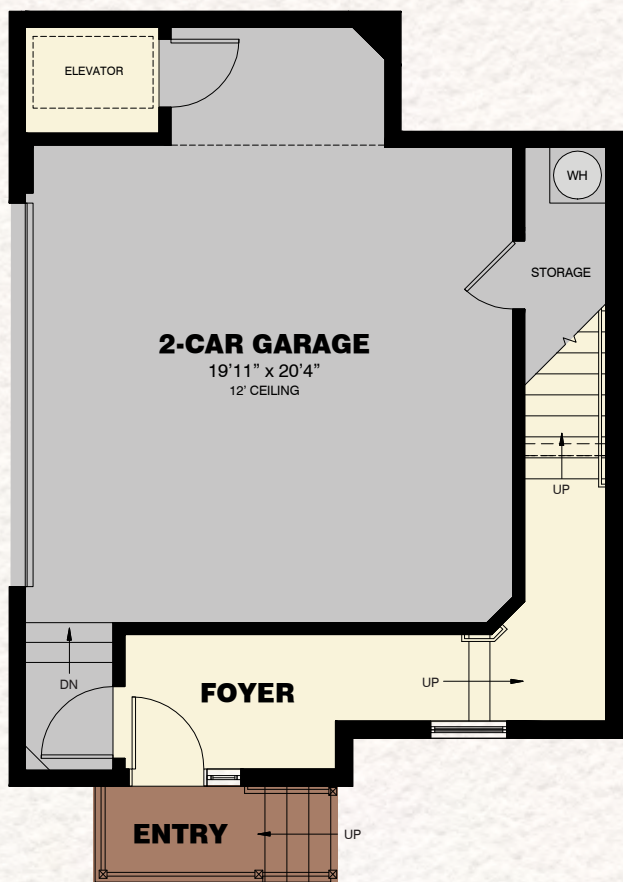
*The Isles*<sup>™</sup>  
 OF COLLIER PRESERVE



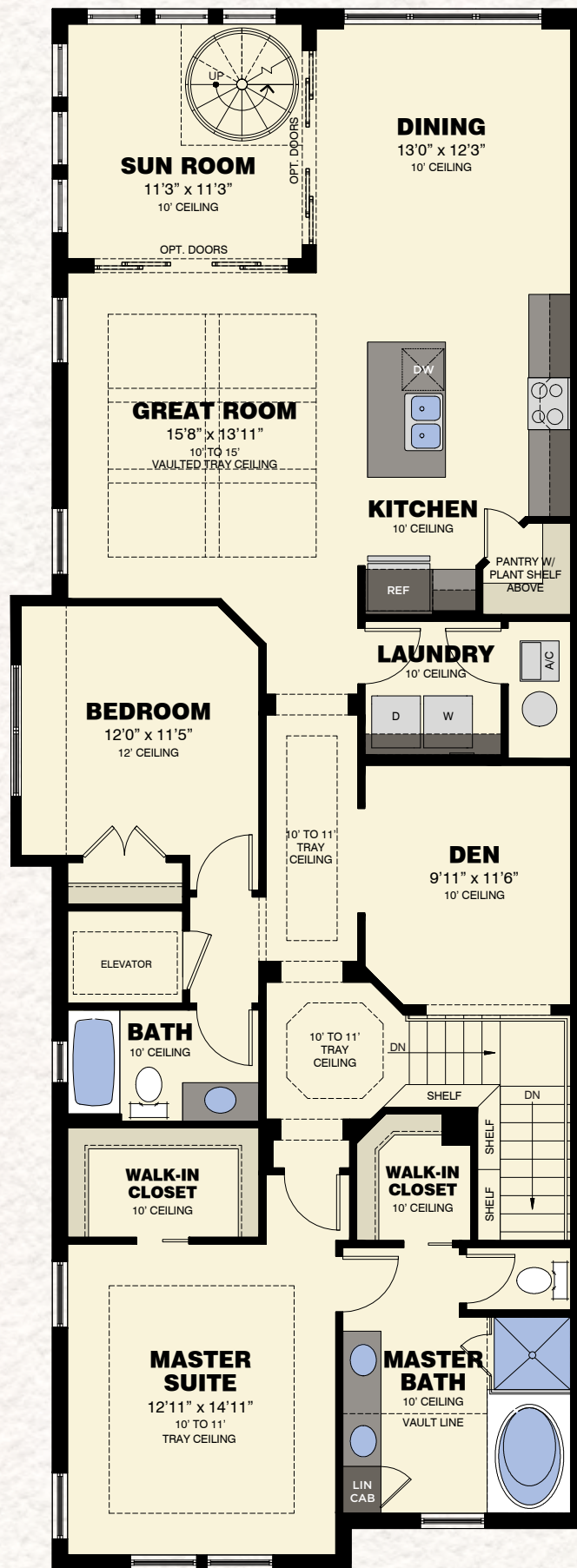
**AVAILABLE  
 WRAP-AROUND  
 BALCONY**



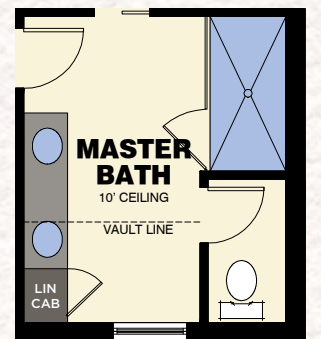
**THIRD FLOOR  
 OBSERVATORY**



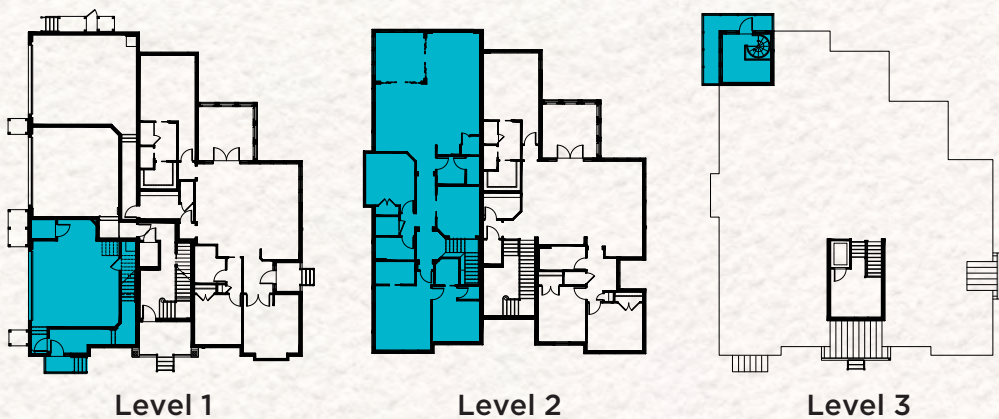
**FIRST FLOOR PLAN**



**SECOND FLOOR PLAN**



**AVAILABLE  
 MASTER BATH  
 VARIATION**



First Floor	144 S.F.
Second Floor	1,867 S.F.
Third Floor Observatory	158 S.F.
Total Living Area	2,169 S.F.
2-Car Garage w/Storage	557 S.F.
Entry	23 S.F.
Elevator	24 S.F.
Observatory Balcony	18 S.F.
Total	2,731 S.F.
Optional Wrap-Around Balcony	100 S.F.



THE SABAL COLLECTION

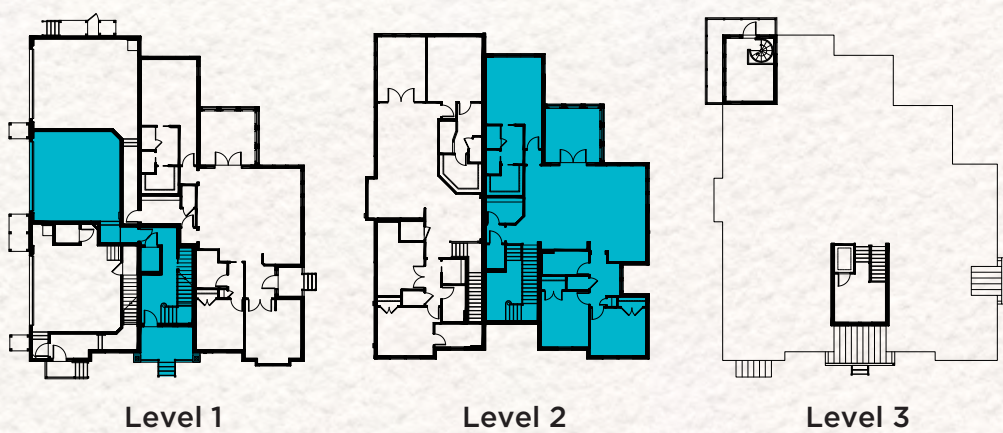
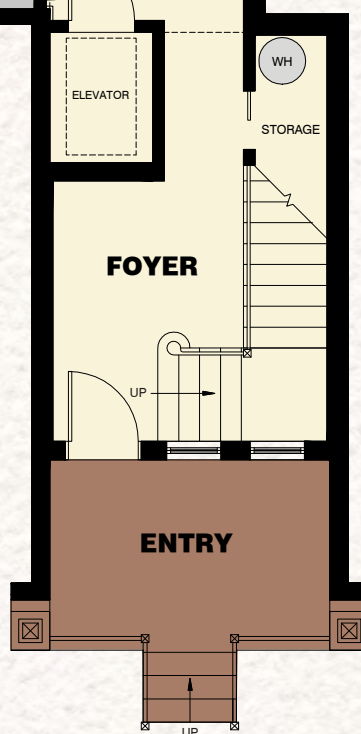
POINCIANA

3 Bedrooms / 2 Baths / Covered Lanai / 2-Car Garage

*The Isles*<sup>™</sup>  
OF COLLIER PRESERVE



FIRST FLOOR PLAN



First Floor	252 S.F.
Second Floor	1,700 S.F.
Total Living Area	1,952 S.F.
2-Car Garage	481 S.F.
Entry	95 S.F.
Lanai	184 S.F.
Elevator	24 S.F.
Total	2,736 S.F.

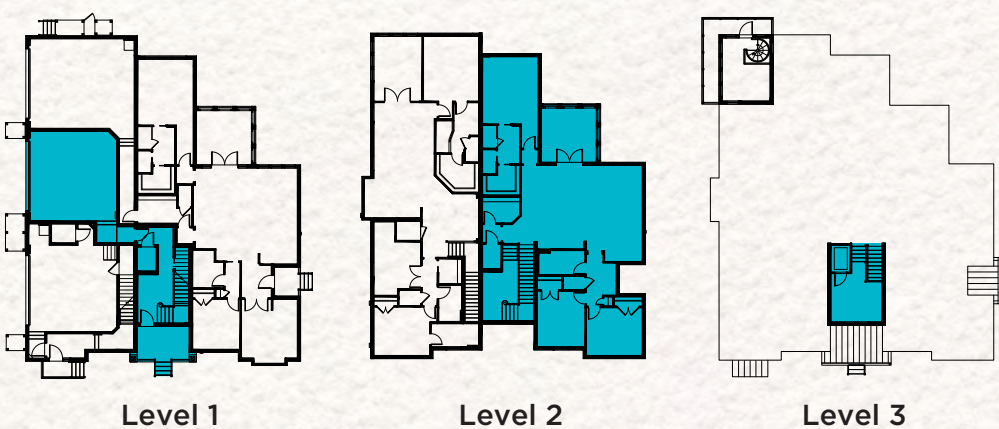


THE SABAL COLLECTION

POINCIANA RETREAT

3 Bedrooms / 2 Baths / Covered Lanai / Retreat / 2-Car Garage

*The Isles*  
OF COLLIER PRESERVE



First Floor	252 S.F.
Second Floor	1,700 S.F.
Third Floor Retreat	125 S.F.
<b>Total Living Area</b>	<b>2,077 S.F.</b>
2-Car Garage	481 S.F.
Covered Entry	95 S.F.
Covered Lanai	184 S.F.
Elevator	24 S.F.
<b>Total</b>	<b>2,861 S.F.</b>



*Inspired* by nature. *Imagined* by Minto.



## THE CYPRESS COLLECTION





THE CYPRESS COLLECTION

CARIBWOOD

3 Bedrooms / 3 Baths / Den / Sun Room / 2-Car Garage

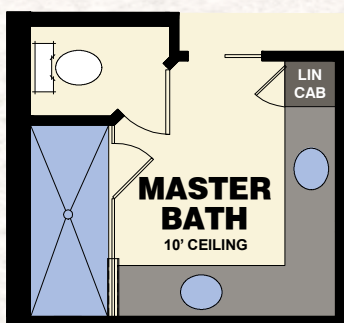
TOUR THIS DECORATED MODEL AT THE ISLES OF COLLIER PRESERVE

*The Isles*  
OF COLLIER PRESERVE

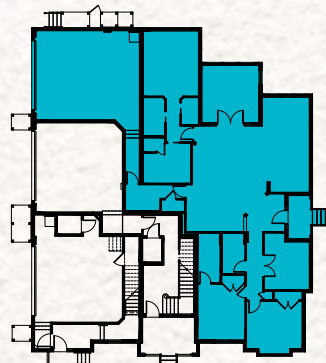
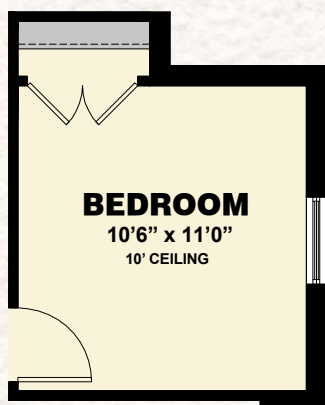


FLOOR PLAN

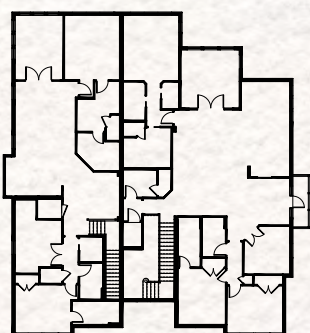
AVAILABLE MASTER BATH VARIATION



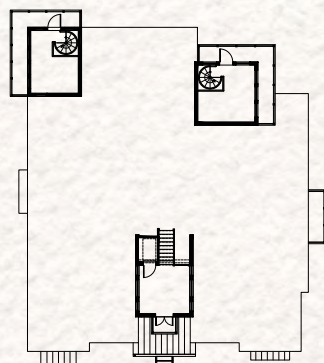
AVAILABLE BEDROOM VARIATION



Level 1



Level 2



Level 3

Total Living Area	2,214 S.F.
2-Car Garage	602 S.F.
Entry	57 S.F.
<b>Total</b>	<b>2,873 S.F.</b>

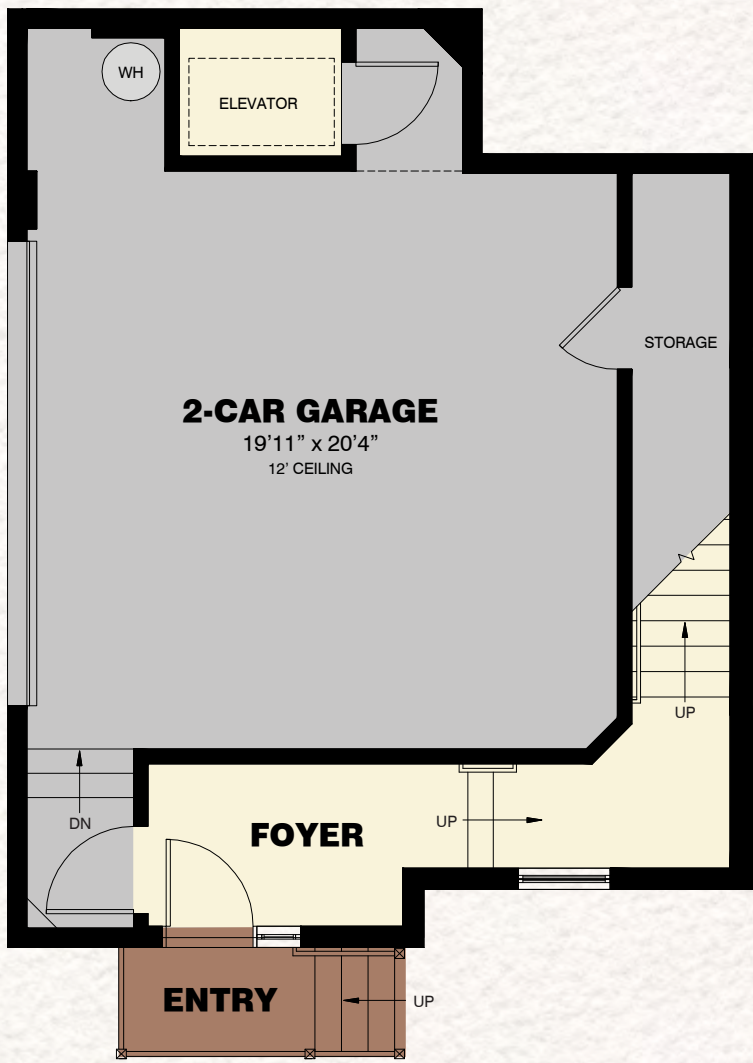


THE CYPRESS COLLECTION

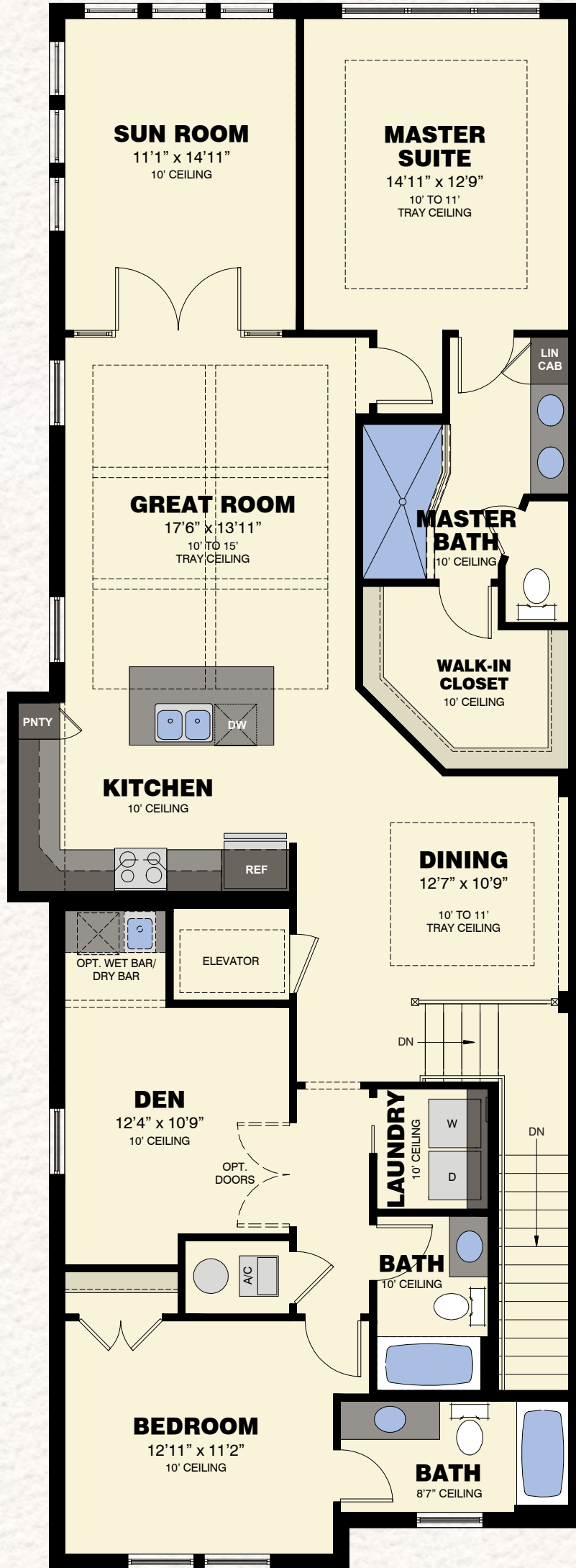
OLEANDER

2 Bedrooms / 3 Baths / Den / Sun Room / 2-Car Garage

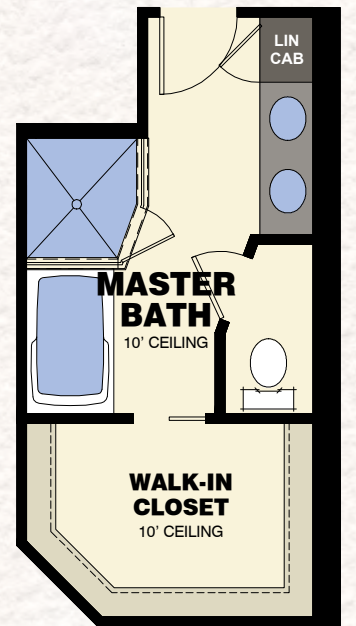
*The Isles*<sup>™</sup>  
OF COLLIER PRESERVE



FIRST FLOOR PLAN



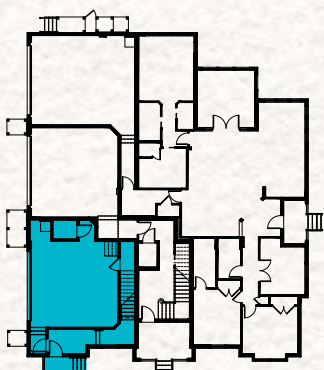
SECOND FLOOR PLAN



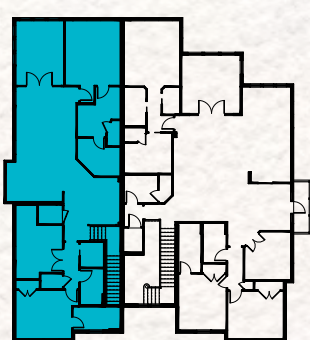
AVAILABLE MASTER BATH VARIATION



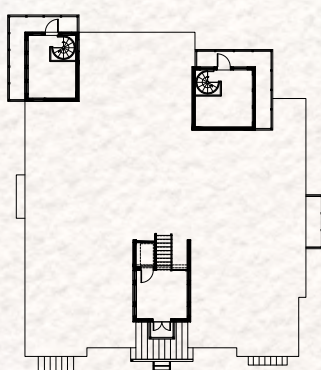
AVAILABLE BEDROOM VARIATION



Level 1



Level 2



Level 3

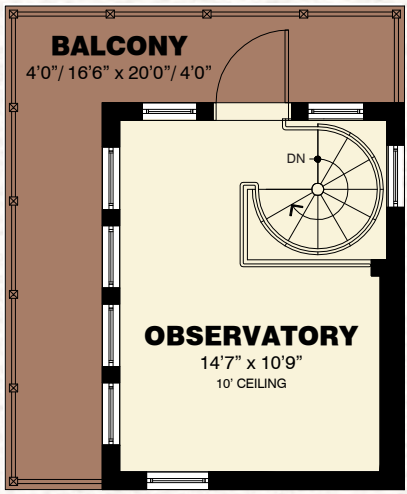
First Floor	144 S.F.
Second Floor	1,843 S.F.
Total Living Area	1,987 S.F.
2-Car Garage w/Storage	557 S.F.
Entry	23 S.F.
Elevator	24 S.F.
Total	2,591 S.F.



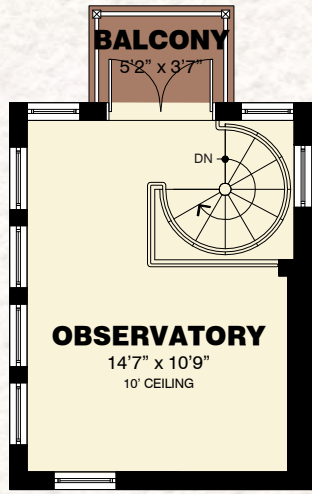
THE CYPRESS COLLECTION  
OLEANDER GRANDE

2 Bedrooms / 3 Baths / Den / Sun Room / Observatory / 2-Car Garage

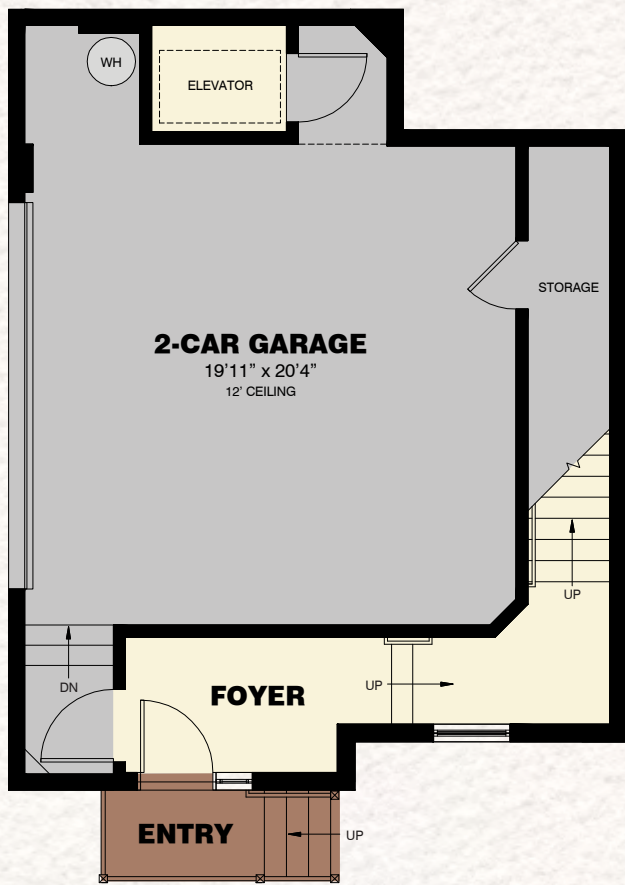
*The Isles*<sup>™</sup>  
OF COLLIER PRESERVE



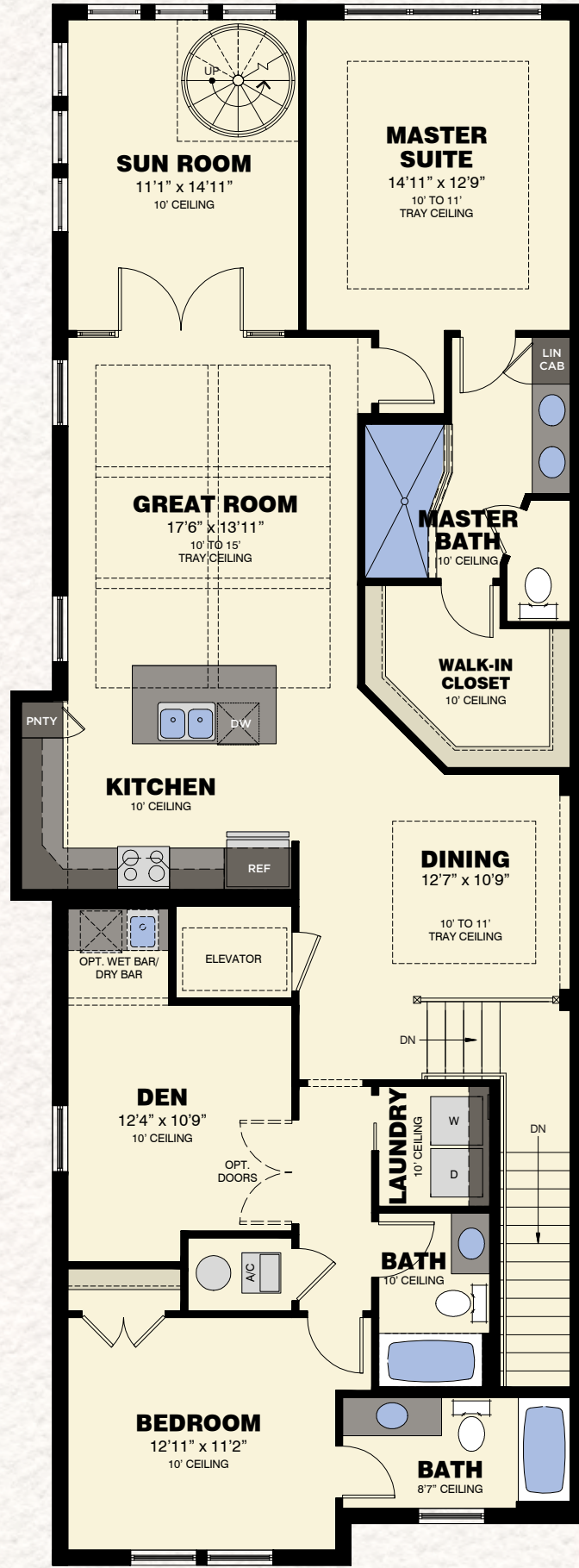
AVAILABLE  
WRAP-AROUND  
BALCONY



THIRD FLOOR  
OBSERVATORY



FIRST FLOOR PLAN



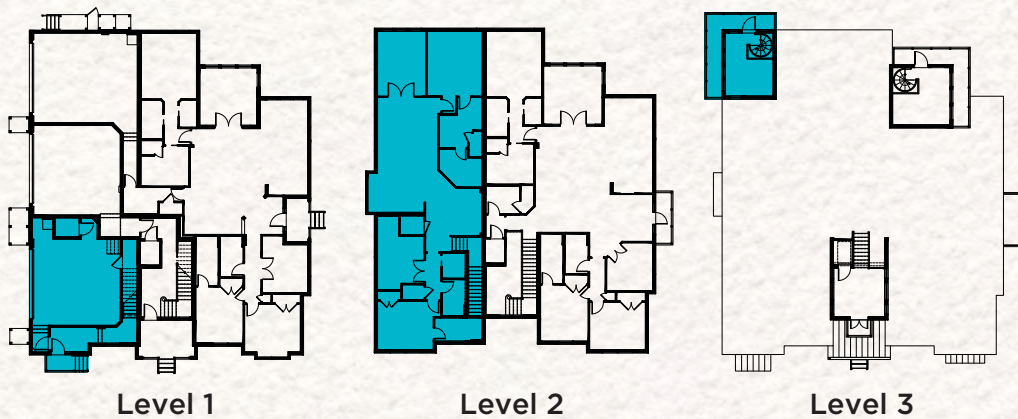
SECOND FLOOR PLAN



AVAILABLE  
MASTER BATH  
VARIATION



AVAILABLE  
BEDROOM  
VARIATION



First Floor	144 S.F.
Second Floor	1,843 S.F.
Third Floor Observatory	173 S.F.
Total Living Area	2,160 S.F.
2-Car Garage w/Storage	557 S.F.
Entry	23 S.F.
Elevator	24 S.F.
Observatory Balcony	18 S.F.
Total	2,782 S.F.
Optional Wrap-Around Balcony	113 S.F.

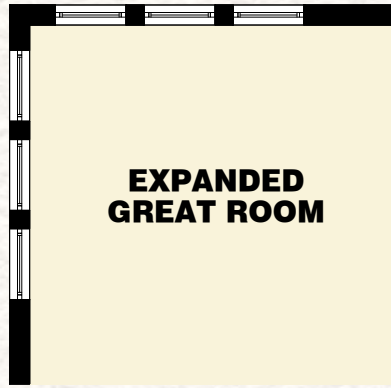


THE CYPRESS COLLECTION

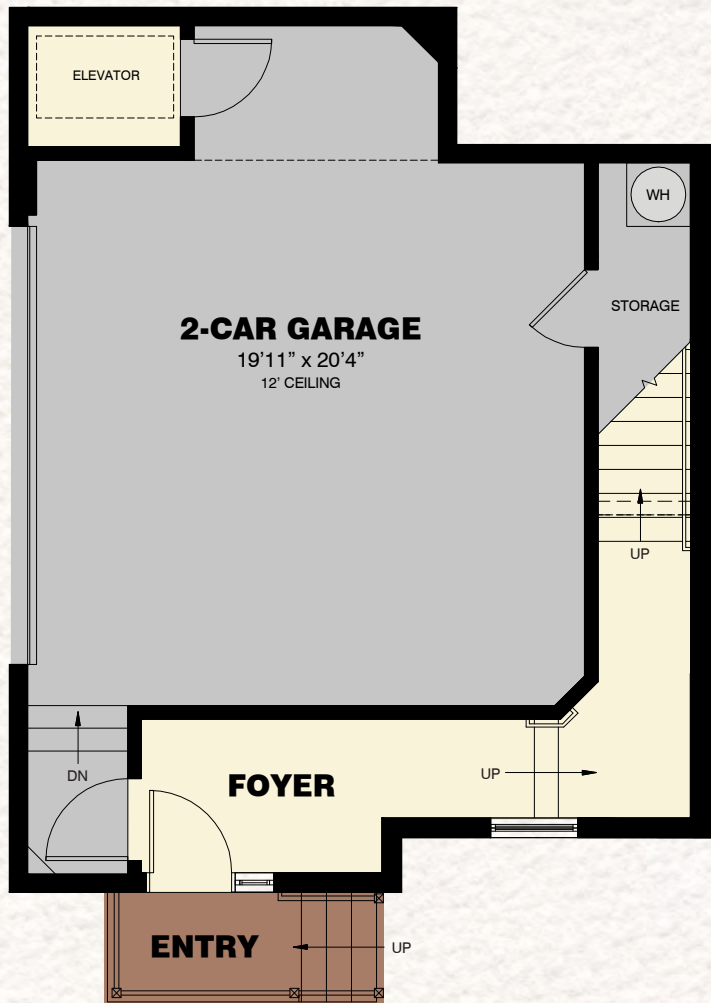
ORCHID

2 Bedrooms / 2 Baths / Den / Sun Room / 2-Car Garage

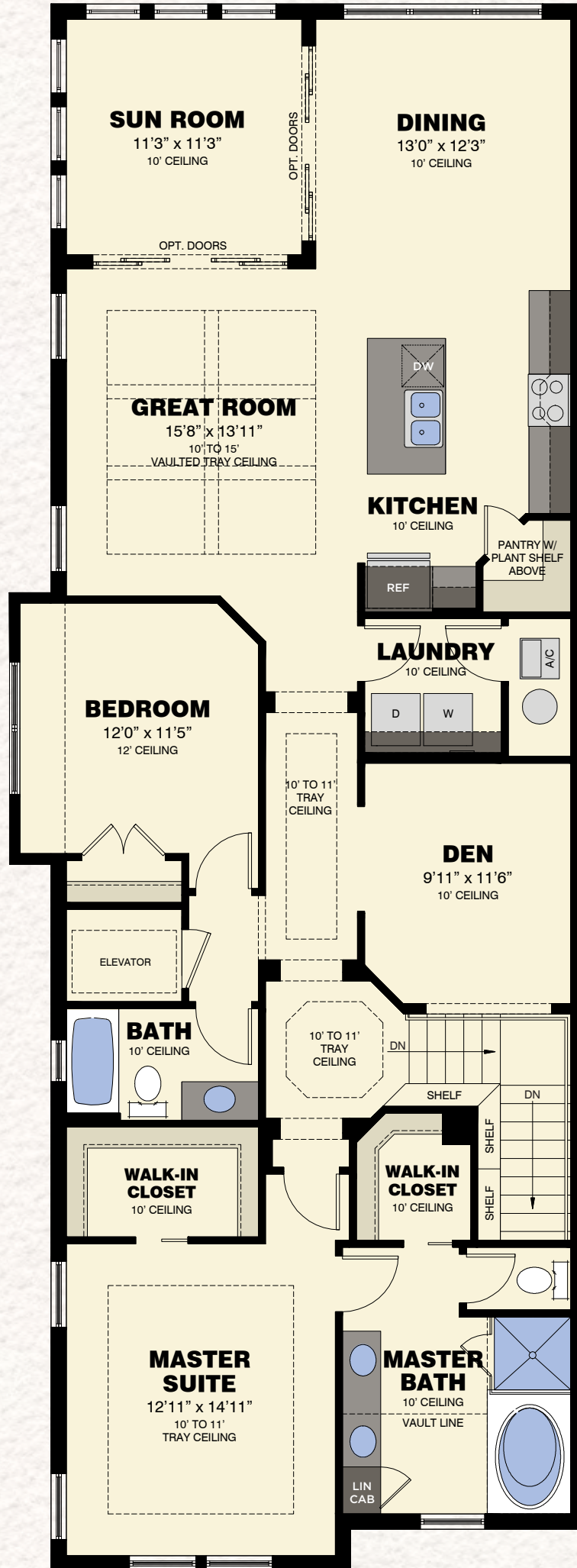
*The Isles*<sup>™</sup>  
OF COLLIER PRESERVE



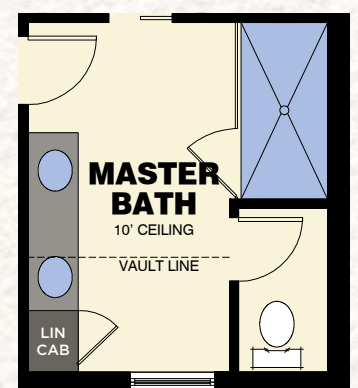
AVAILABLE EXPANDED GREAT ROOM VARIATION



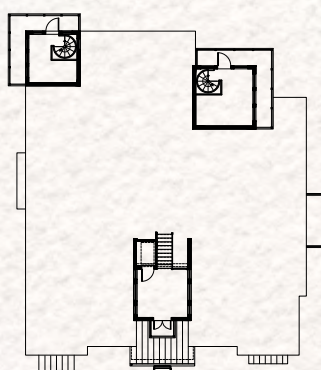
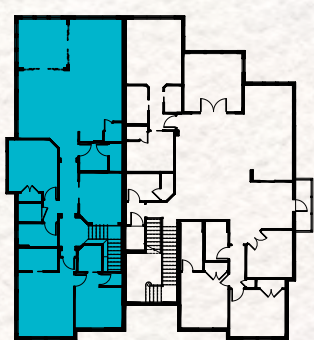
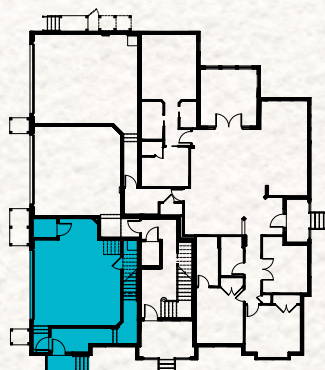
FIRST FLOOR PLAN



SECOND FLOOR PLAN



AVAILABLE MASTER BATH VARIATION



First Floor	144 S.F.
Second Floor	1,867 S.F.
Total Living Area	2,011 S.F.
2-Car Garage w/Storage	557 S.F.
Entry	23 S.F.
Elevator	24 S.F.
<b>Total</b>	<b>2,615 S.F.</b>



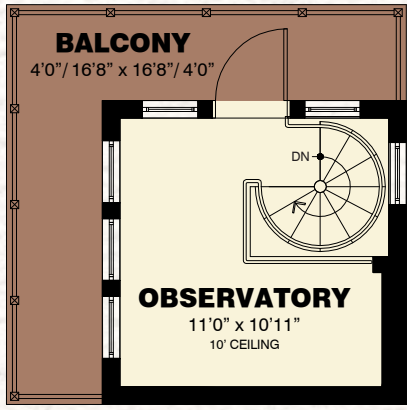
THE CYPRESS COLLECTION

ORCHID GRANDE

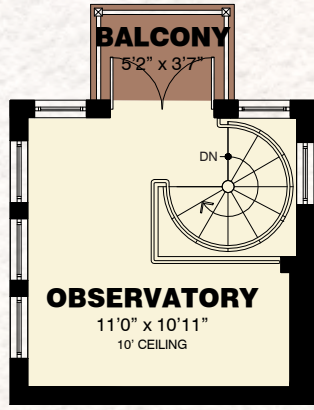
2 Bedrooms / 2 Baths / Den / Sun Room / Observatory / 2-Car Garage

TOUR THIS DECORATED MODEL  
AT THE ISLES OF COLLIER PRESERVE

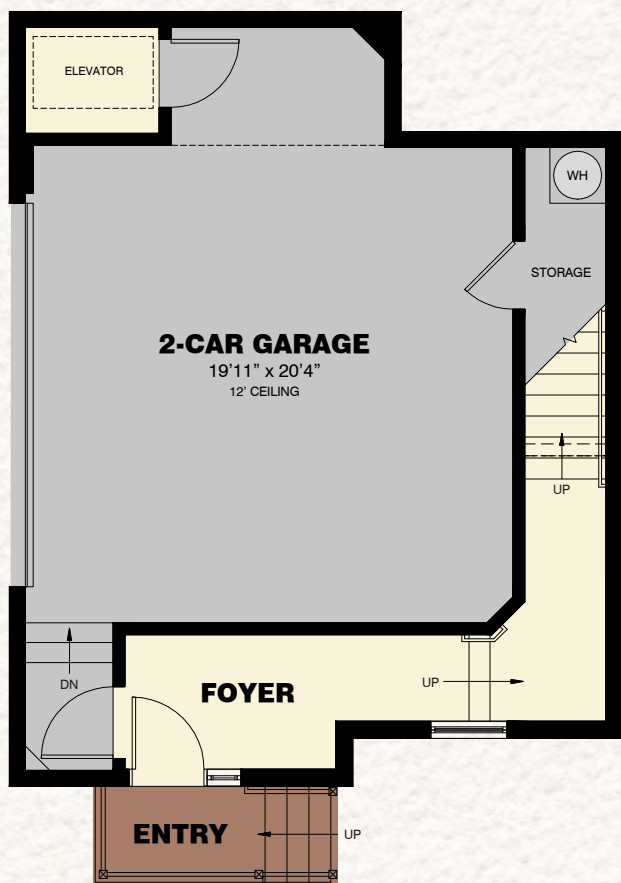
*The Isles*  
OF COLLIER PRESERVE



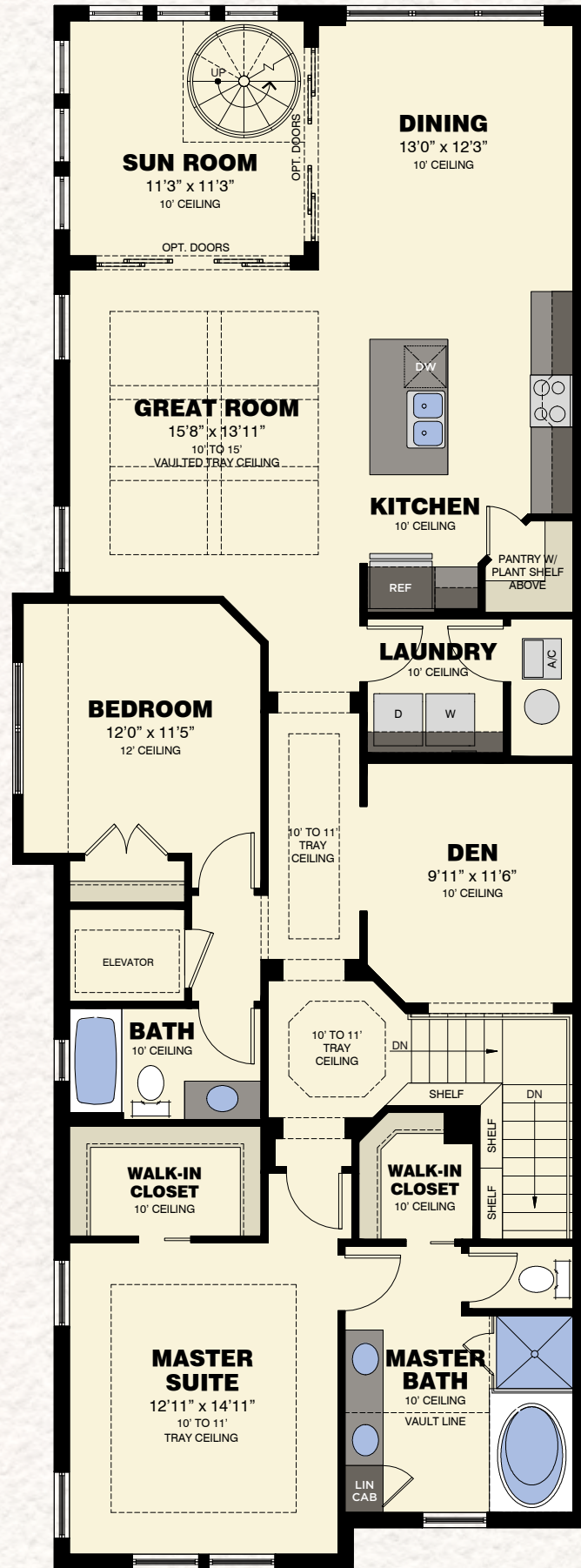
**AVAILABLE  
WRAP-AROUND  
BALCONY**



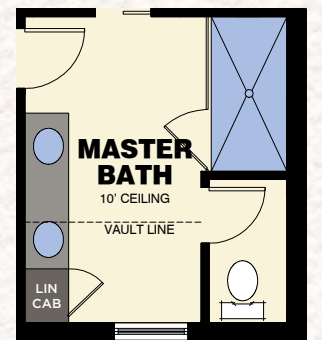
**THIRD FLOOR  
OBSERVATORY**



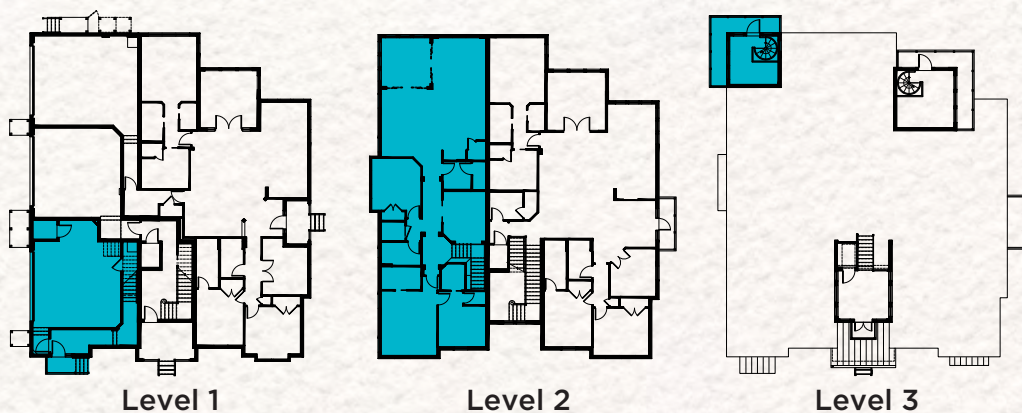
**FIRST FLOOR PLAN**



**SECOND FLOOR PLAN**



**AVAILABLE  
MASTER BATH  
VARIATION**



First Floor	144 S.F.
Second Floor	1,867 S.F.
Third Floor Observatory	158 S.F.
Total Living Area	2,169 S.F.
2-Car Garage w/Storage	557 S.F.
Entry	23 S.F.
Elevator	24 S.F.
Observatory Balcony	18 S.F.
Total	2,731 S.F.
Optional Wrap-Around Balcony	100 S.F.

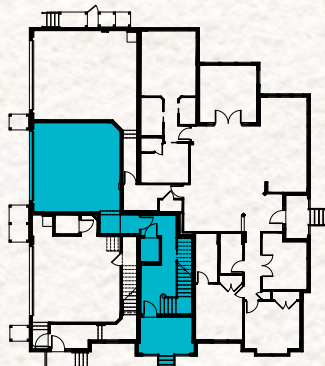


THE CYPRESS COLLECTION

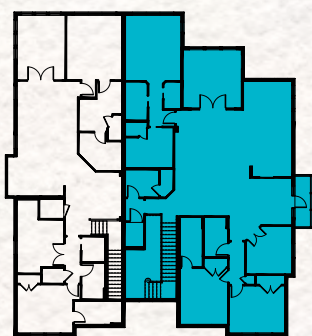
HIBISCUS

3 Bedrooms / 3 Baths / Den / Sun Room / 2-Car Garage

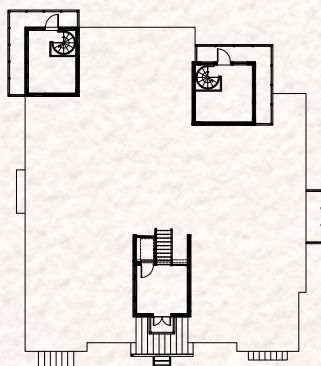
*The Isles*  
OF COLLIER PRESERVE



Level 1



Level 2



Level 3

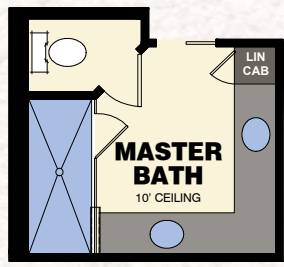
First Floor	258 S.F.
Second Floor	2,313 S.F.
Total Living Area	2,571 S.F.
2-Car Garage	486 S.F.
Entry	94 S.F.
Elevator	24 S.F.
Covered Balcony	41 S.F.
<b>Total</b>	<b>3,216 S.F.</b>



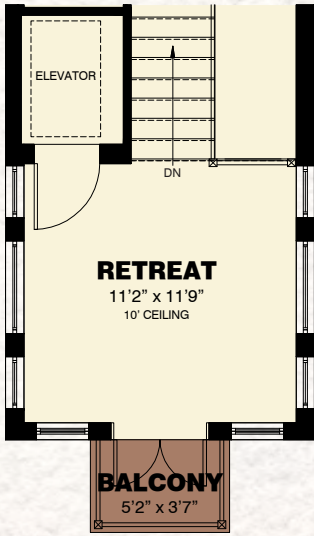
THE CYPRESS COLLECTION  
**HIBISCUS RETREAT**

3 Bedrooms / 3 Baths / Den / Sun Room / Retreat / 2-Car Garage

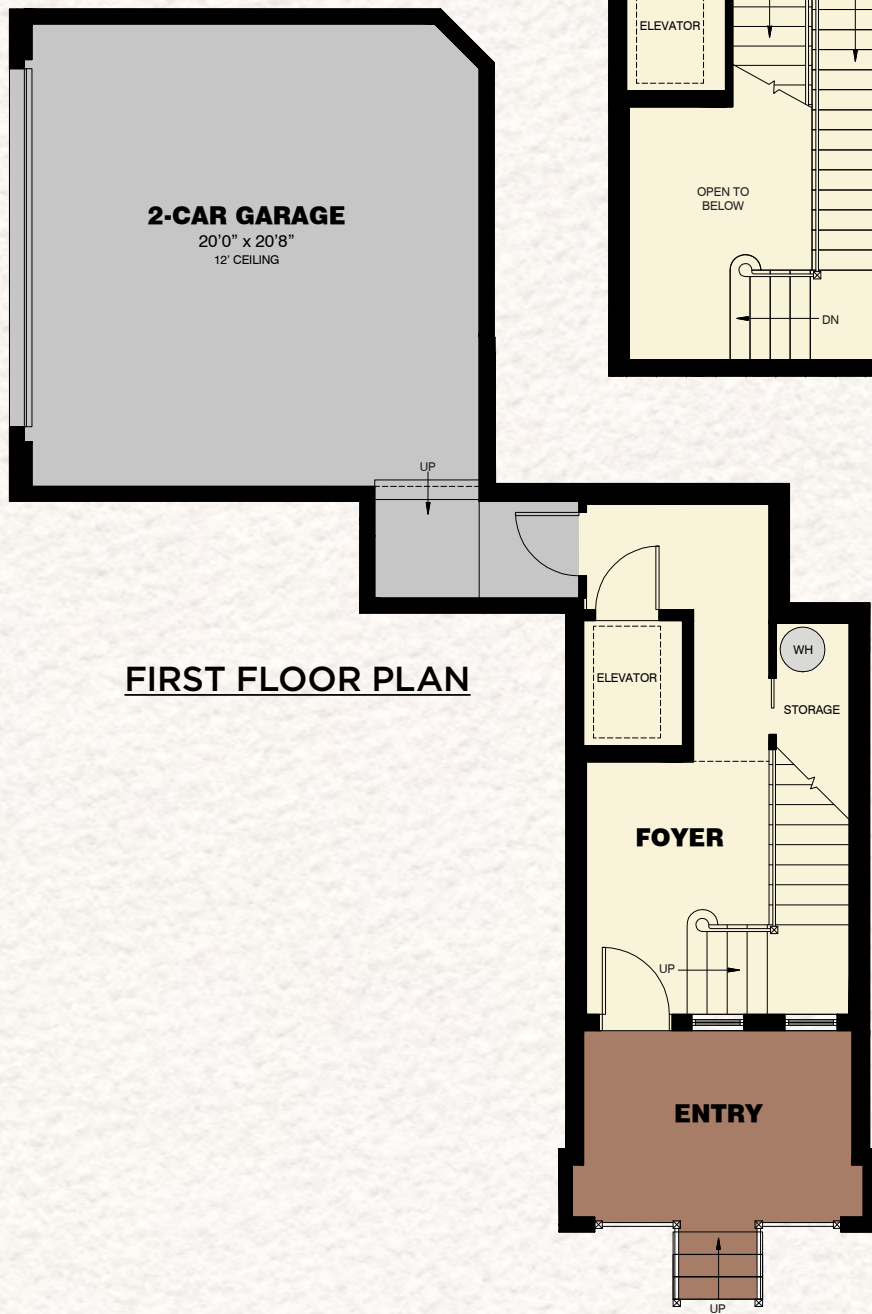
*The Isles*<sup>™</sup>  
 OF COLLIER PRESERVE



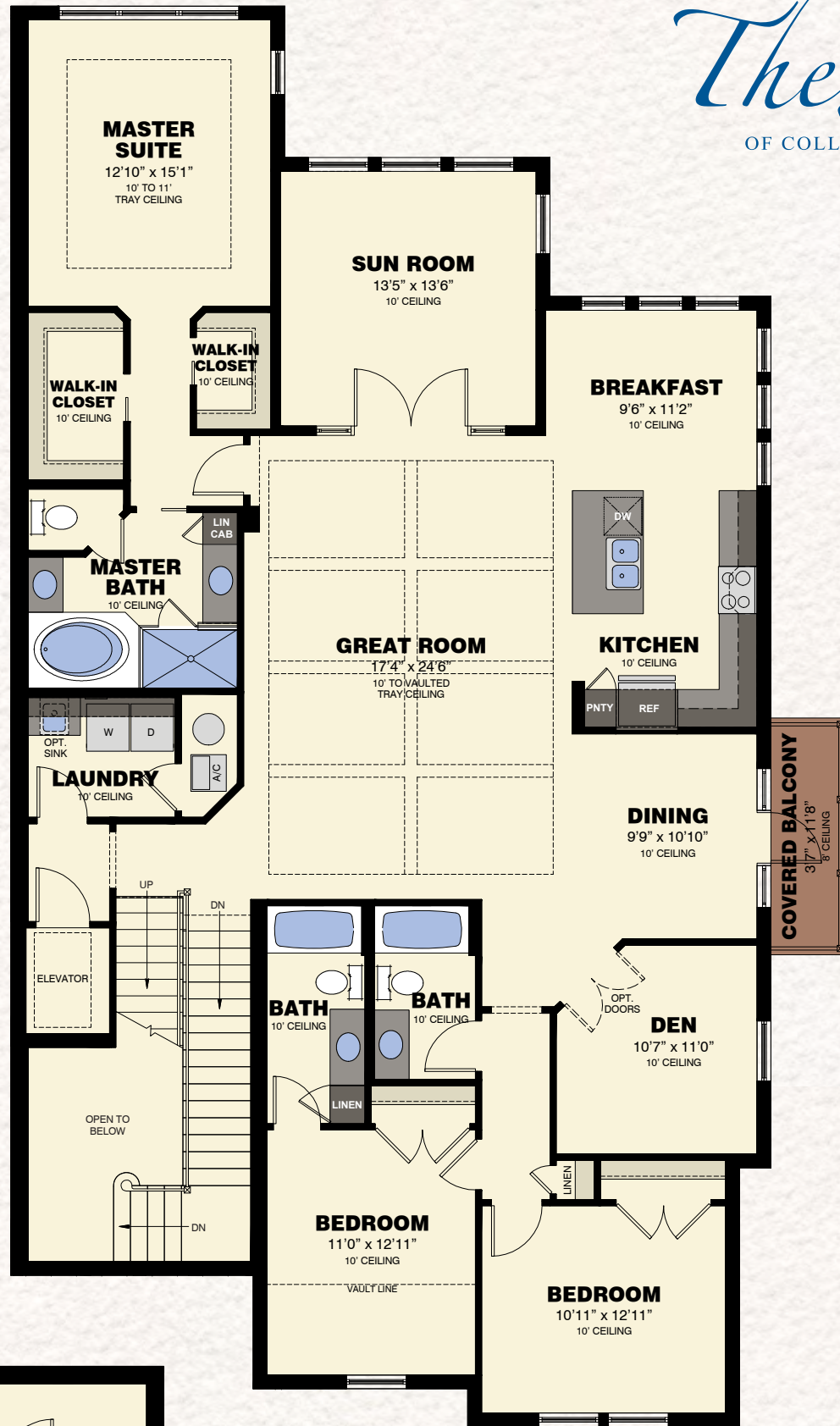
**AVAILABLE  
 MASTER BATH  
 VARIATION**



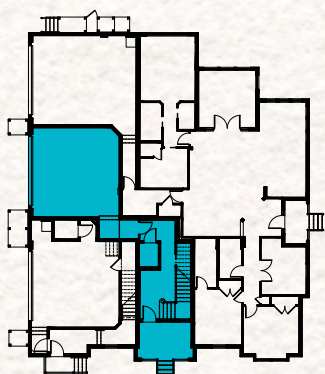
**THIRD FLOOR  
 RETREAT**



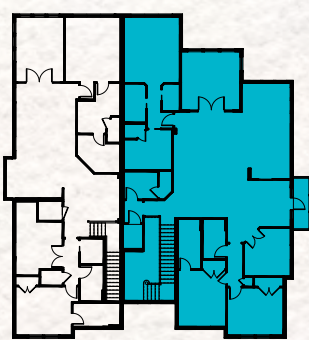
**FIRST FLOOR PLAN**



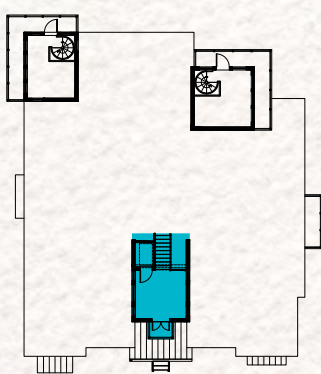
**SECOND FLOOR PLAN**



Level 1



Level 2



Level 3

First Floor	258 S.F.
Second Floor	2,313 S.F.
Third Floor Retreat	162 S.F.
<b>Total Living Area</b>	<b>2,733 S.F.</b>
2-Car Garage	486 S.F.
Entry	94 S.F.
Elevator	24 S.F.
Covered Balcony	41 S.F.
Retreat Balcony	18 S.F.
<b>Total</b>	<b>3,396 S.F.</b>

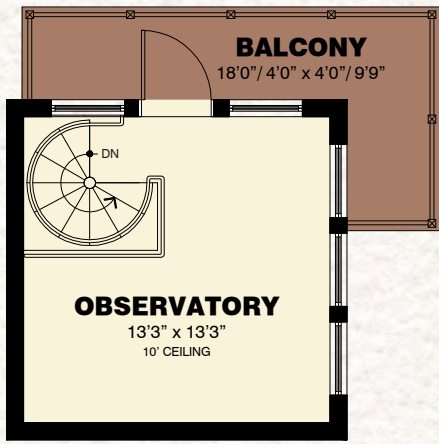


THE CYPRESS COLLECTION

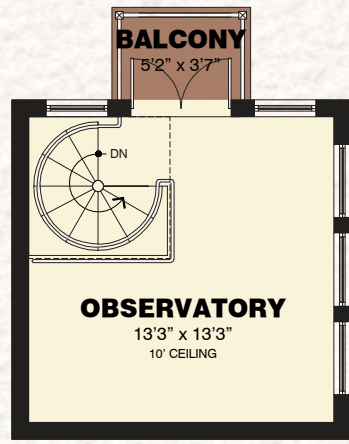
HIBISCUS GRANDE

3 Bedrooms / 3 Baths / Den / Sun Room / Observatory / 2-Car Garage

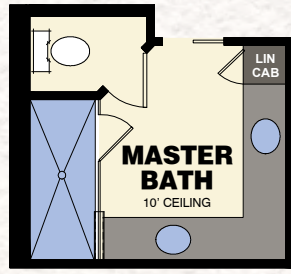
*The Isles*  
OF COLLIER PRESERVE



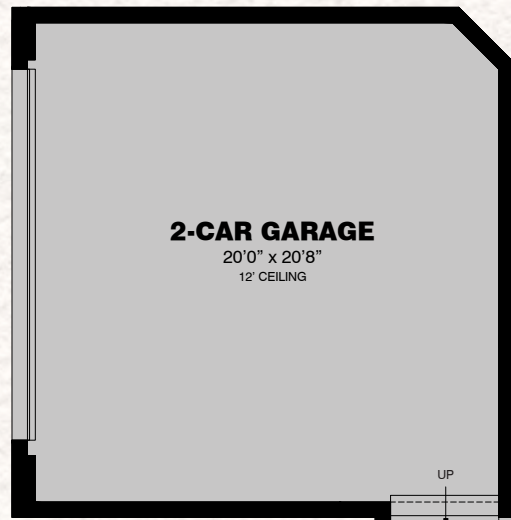
AVAILABLE  
WRAP-AROUND  
BALCONY



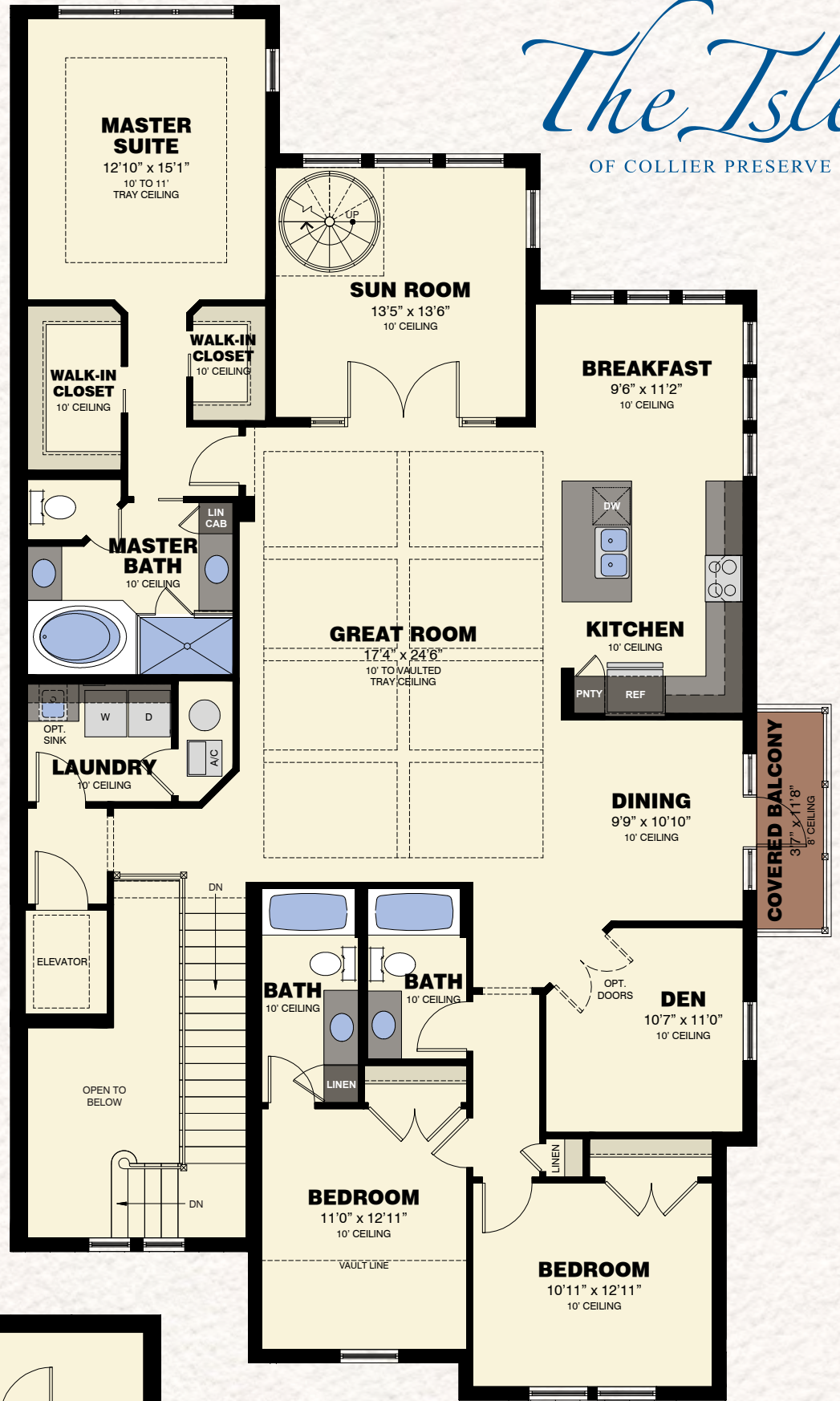
THIRD FLOOR  
OBSERVATORY



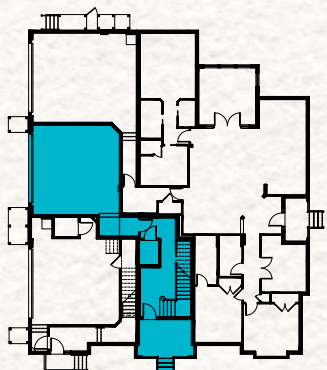
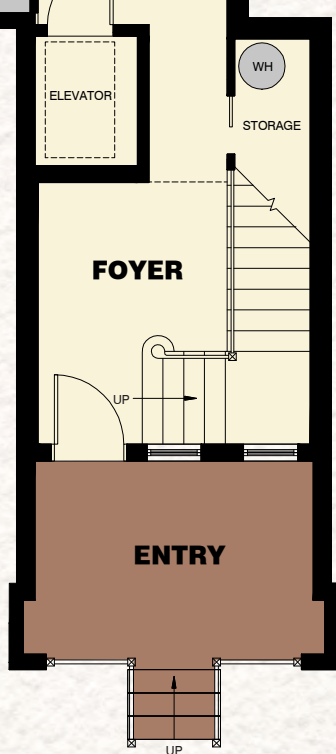
AVAILABLE  
MASTER BATH  
VARIATION



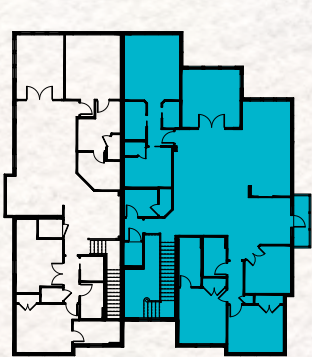
FIRST FLOOR PLAN



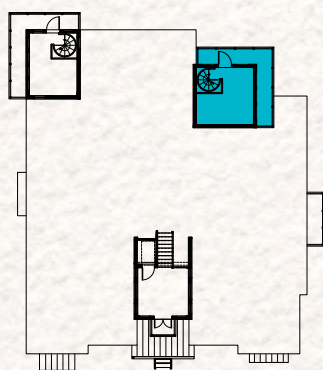
SECOND FLOOR PLAN



Level 1



Level 2



Level 3

First Floor	258 S.F.
Second Floor	2,313 S.F.
Third Floor Observatory	215 S.F.
Total Living Area	2,786 S.F.
2-Car Garage	486 S.F.
Entry	94 S.F.
Elevator	24 S.F.
Covered Balcony	41 S.F.
Observatory Balcony	18 S.F.
Total	3,449 S.F.

Optional Wrap-Around Balcony 81 S.F.



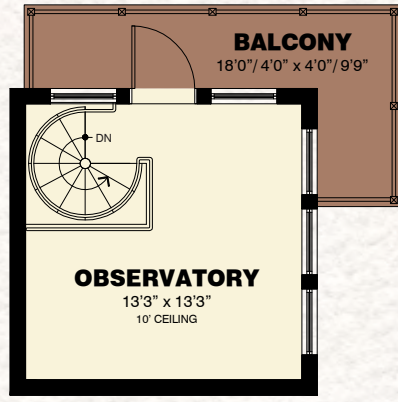
THE CYPRESS COLLECTION

HIBISCUS GRANDE RETREAT

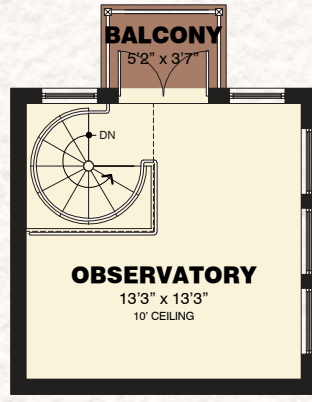
3 Bedrooms / 3 Baths / Den / Sun Room / Observatory / Retreat / 2-Car Garage

TOUR THIS DECORATED MODEL  
AT THE ISLES OF COLLIER PRESERVE

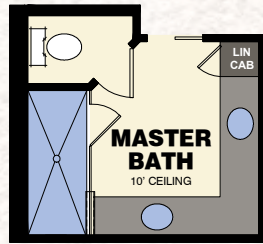
*The Isles*  
OF COLLIER PRESERVE



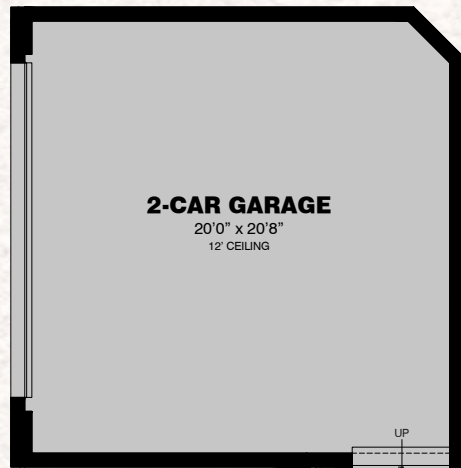
AVAILABLE  
WRAP-AROUND  
BALCONY



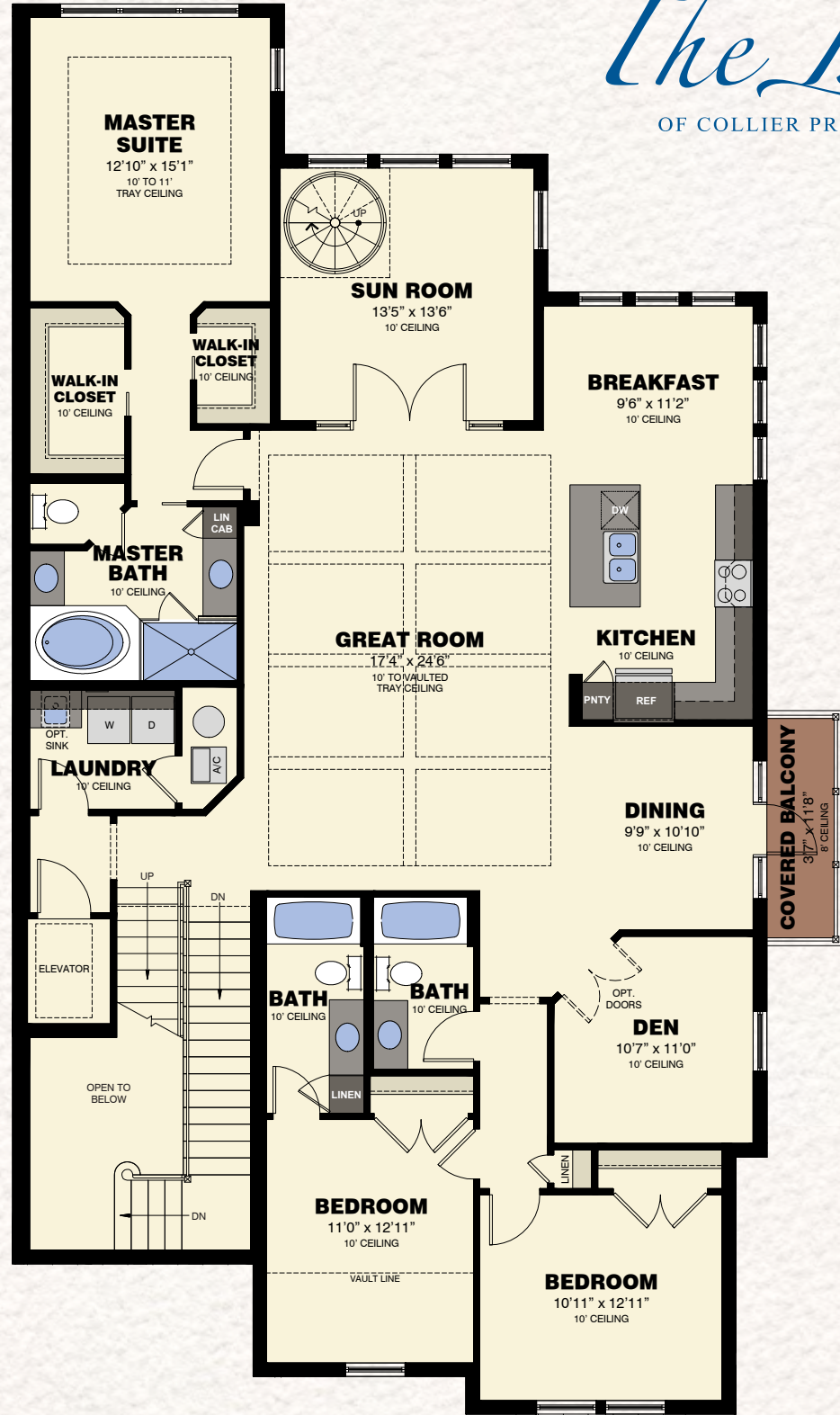
THIRD FLOOR  
OBSERVATORY



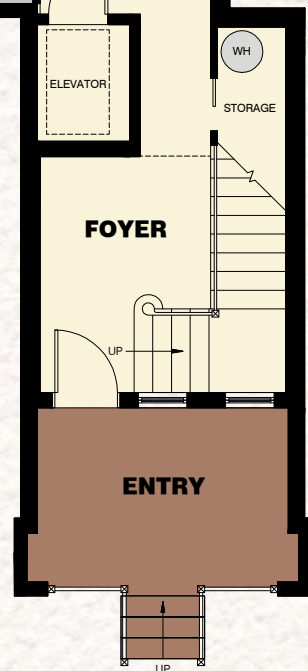
AVAILABLE  
MASTER BATH  
VARIATION



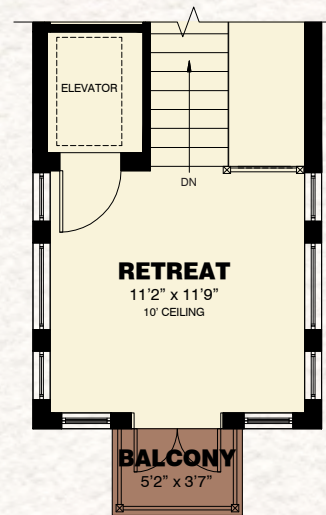
FIRST FLOOR PLAN



SECOND FLOOR PLAN



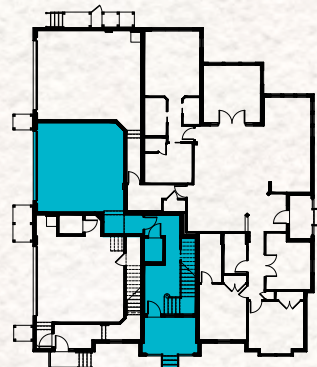
FIRST FLOOR PLAN



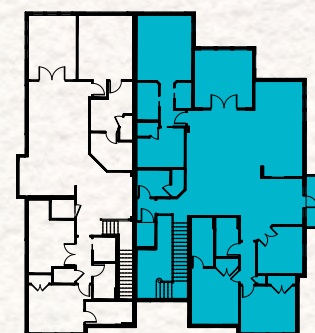
THIRD FLOOR RETREAT

First Floor	258 S.F.
Second Floor	2,313 S.F.
Third Floor Retreat	162 S.F.
Third Floor Observatory	215 S.F.
Total Living Area	2,948 S.F.
2-Car Garage	486 S.F.
Entry	94 S.F.
Elevator	24 S.F.
Observatory Balcony	18 S.F.
Covered Balcony	41 S.F.
Retreat Balcony	18 S.F.
Total	3,629 S.F.

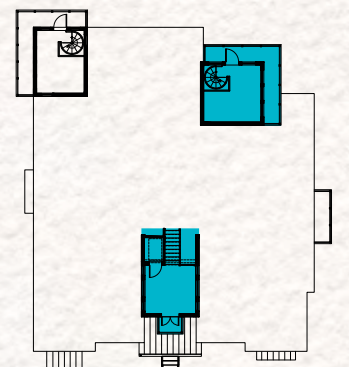
Optional Wrap-Around Balcony 81 S.F.



Level 1



Level 2



Level 3



Florida's *preeminent* homebuilder.



Founded in 1955, Minto is a family-owned business that has grown into Florida's preeminent homebuilder, with more than 80,000 homes built. Minto creates award-winning new homes and communities that provide rich and rewarding lifestyles throughout Florida. In fact, we're ranked #1 by Eliant Homebuyers Choice Awards and have earned numerous other awards for our homes and communities, setting us apart as Florida's most exceptional homebuilder.

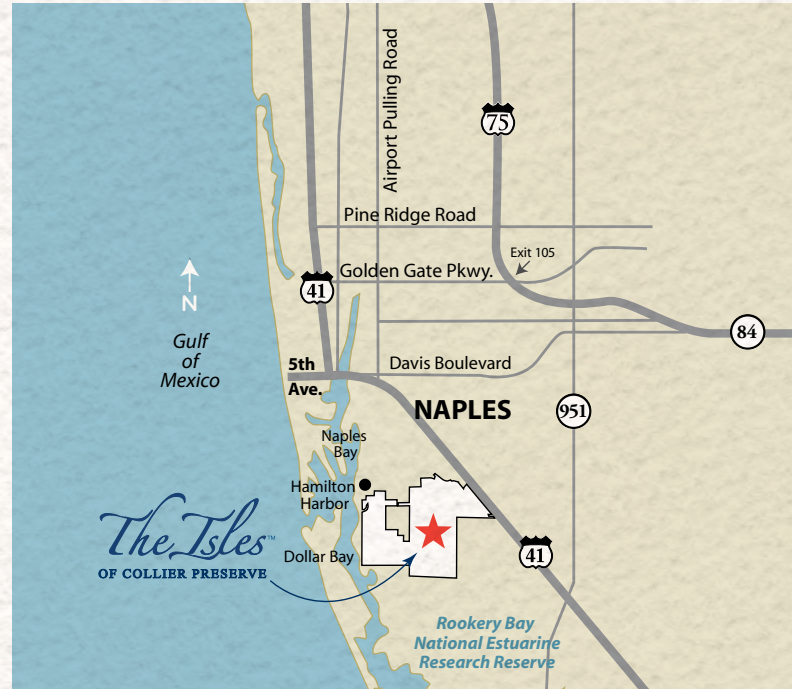
We appreciate your interest in The Isles of Collier Preserve. For more information about our award-winning homes and communities throughout Florida, please visit us at [MintoUSA.com](http://MintoUSA.com).



Ideally located just off the Tamiami Trail (US 41) on the south shore of Naples Bay, The Isles of Collier Preserve offers a one-of-a-kind lifestyle in the heart of all that Southwest Florida has to offer.

At the Isles of Collier Preserve you can enjoy bird watching off your back porch or boutique shopping and dining in Downtown Naples just four short miles away. All the attractions of this world-class destination are convenient to The Isles of Collier Preserve, which is nestled within one of the country's richest coastal environments. It's the best of both worlds, and only Minto could bring it to life.





From I-75, take Exit 105 and travel west on Golden Gate Parkway to Airport Pulling Road. Exit to the right, then turn left onto Airport Pulling Road and continue 3 miles to Tamiami Trail East (US 41). Turn left and continue 2.5 miles to The Isles of Collier Preserve entrance on the right.



5445 Caribe Avenue, Naples, FL 34113  
888.604.3138 | [MintoUSA.com](http://MintoUSA.com)

*The Isles*<sup>™</sup>  
OF COLLIER PRESERVE