

Coach Homes
Floorplans



The Isles[™]
OF COLLIER PRESERVE

On the south shore of Naples Bay

An elegant *sanctuary* for everyday living.

An extraordinary *setting* for everyday adventures.



© Minto Communities, LLC 2016. All rights reserved. Content may not be reproduced, copied, altered, distributed, stored or transferred in any form or by any means without express written permission. Artist's renderings, dimensions, specifications, prices and features are approximate and subject to change without notice.

ORAL REPRESENTATIONS CANNOT BE RELIED UPON AS CORRECTLY STATING REPRESENTATIONS OF THE DEVELOPER. FOR CORRECT REPRESENTATIONS, MAKE REFERENCE TO THIS BROCHURE AND TO THE DOCUMENTS REQUIRED BY SECTION 718.503, FLORIDA STATUTES, TO BE FURNISHED BY A DEVELOPER TO A BUYER OR LESSEE.

Minto, the Minto logo, The Isle of Collier Preserve and the The Isle of Collier Preserve logo are trademarks of Minto Communities, LLC, and/or its affiliates. CGC1519880. 1/16

THE SABAL COLLECTION

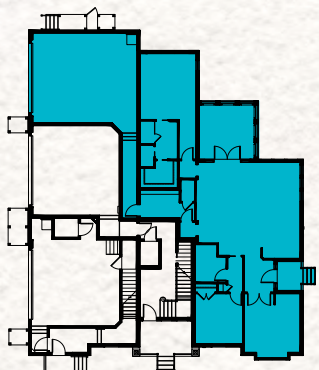


THE SABAL COLLECTION

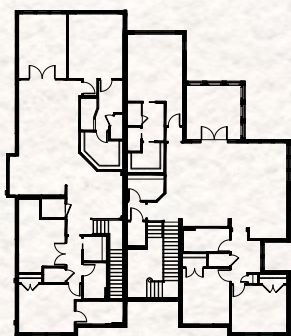
AZALEA

2 Bedrooms / 2 Baths / Den / Covered Lanai / 2-Car Garage

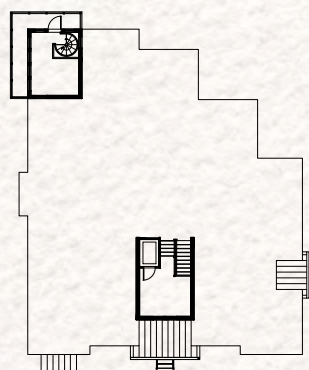
The Isles[™]
OF COLLIER PRESERVE



Level 1



Level 2



Level 3

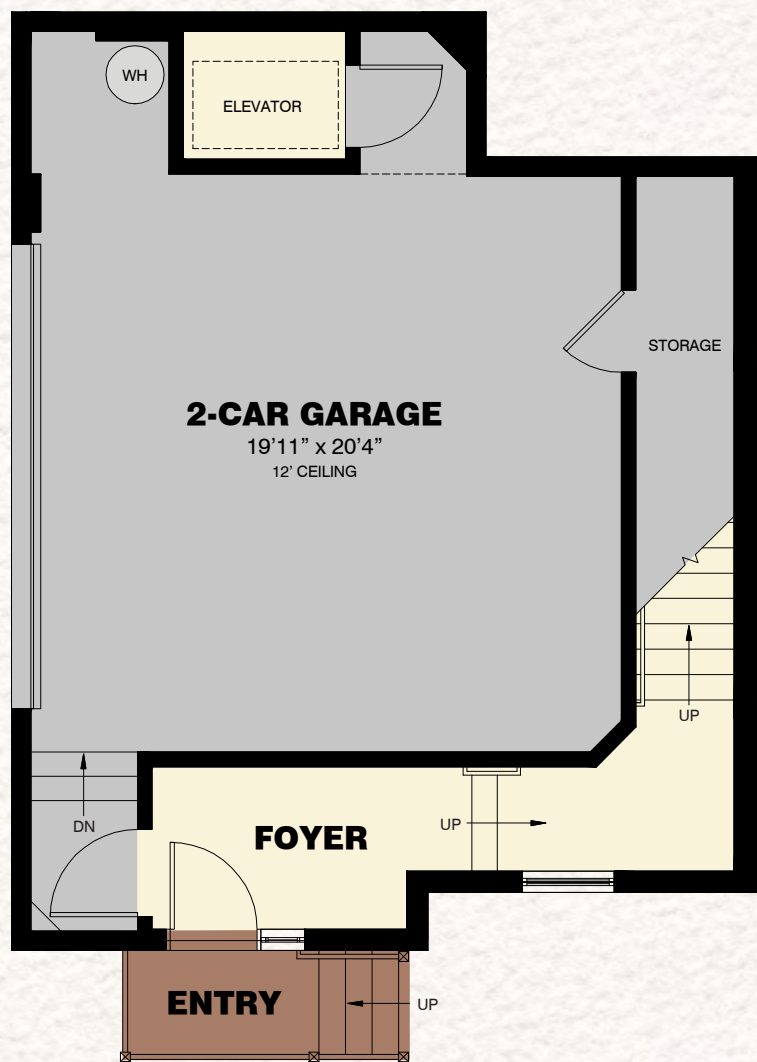
Total Living Area	1,621 S.F.
2-Car Garage	634 S.F.
Entry	40 S.F.
Lanai	184 S.F.
Total	2,479 S.F.

THE SABAL COLLECTION

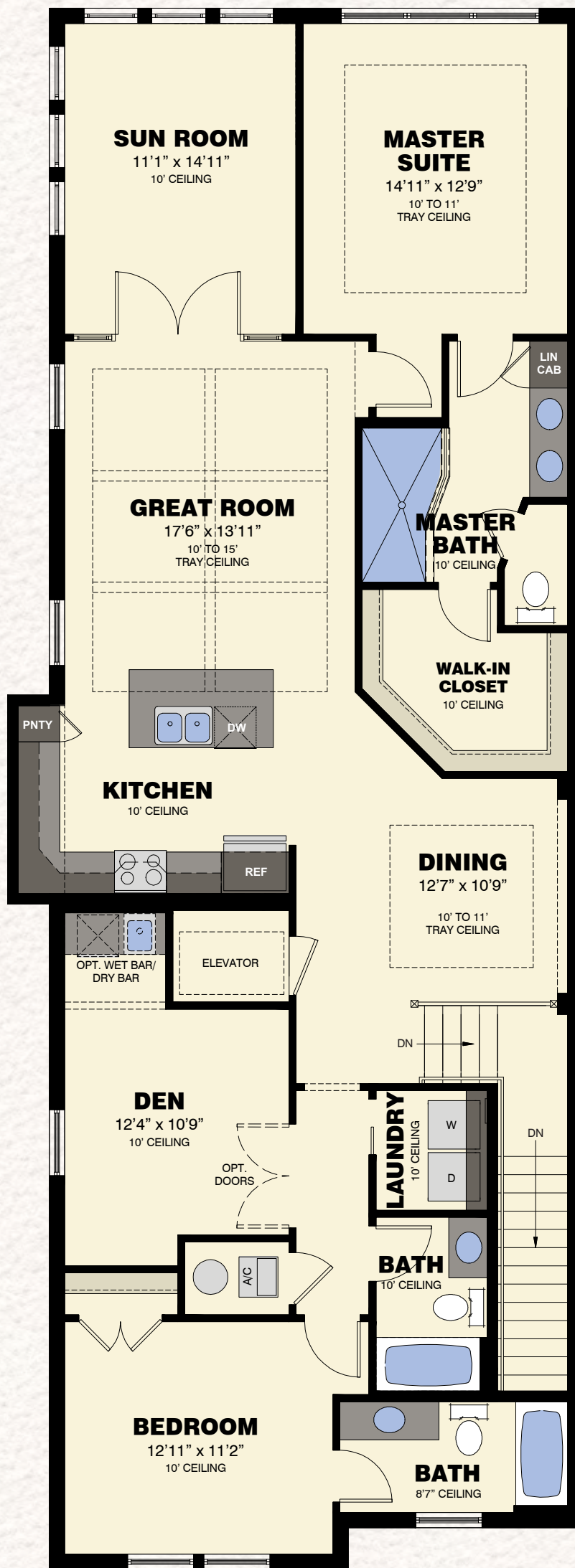
OLEANDER

2 Bedrooms / 3 Baths / Den / Sun Room / 2-Car Garage

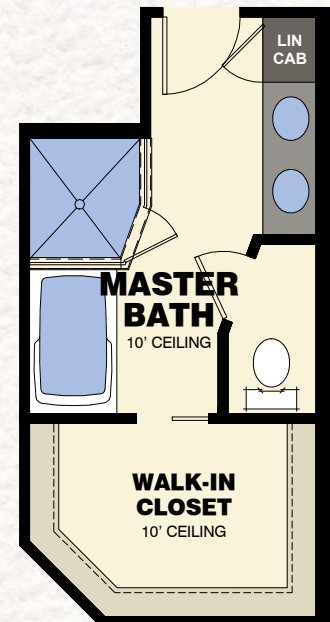
The Isles[™]
OF COLLIER PRESERVE



FIRST FLOOR PLAN



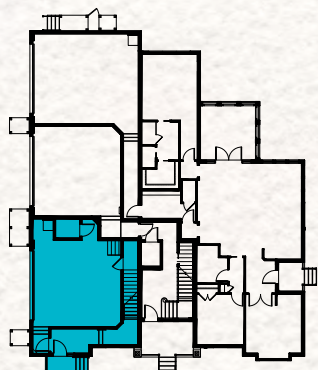
SECOND FLOOR PLAN



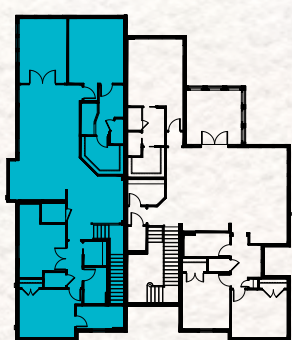
AVAILABLE MASTER BATH VARIATION



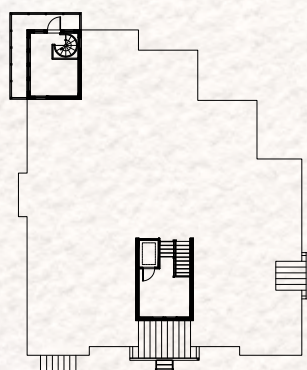
AVAILABLE BEDROOM VARIATION



Level 1



Level 2



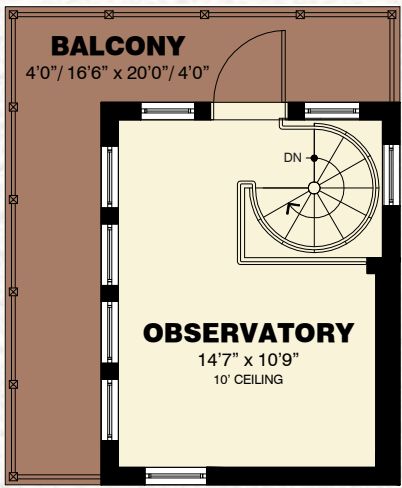
Level 3

First Floor	144 S.F.
Second Floor	1,843 S.F.
Total Living Area	1,987 S.F.
2-Car Garage w/Storage	557 S.F.
Entry	23 S.F.
Elevator	24 S.F.
Total	2,591 S.F.

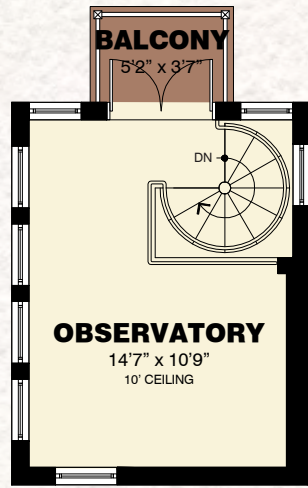
THE SABAL COLLECTION
OLEANDER GRANDE

2 Bedrooms / 3 Baths / Den / Sun Room / Observatory / 2-Car Garage

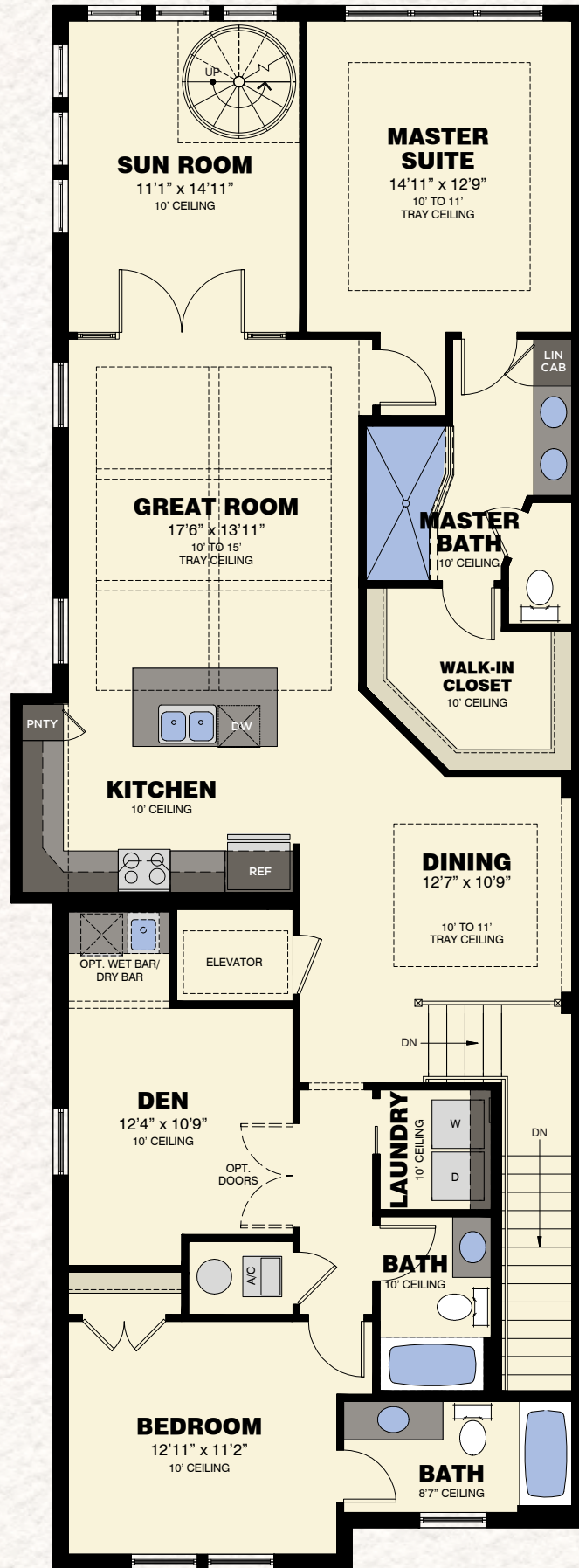
The Isles[™]
OF COLLIER PRESERVE



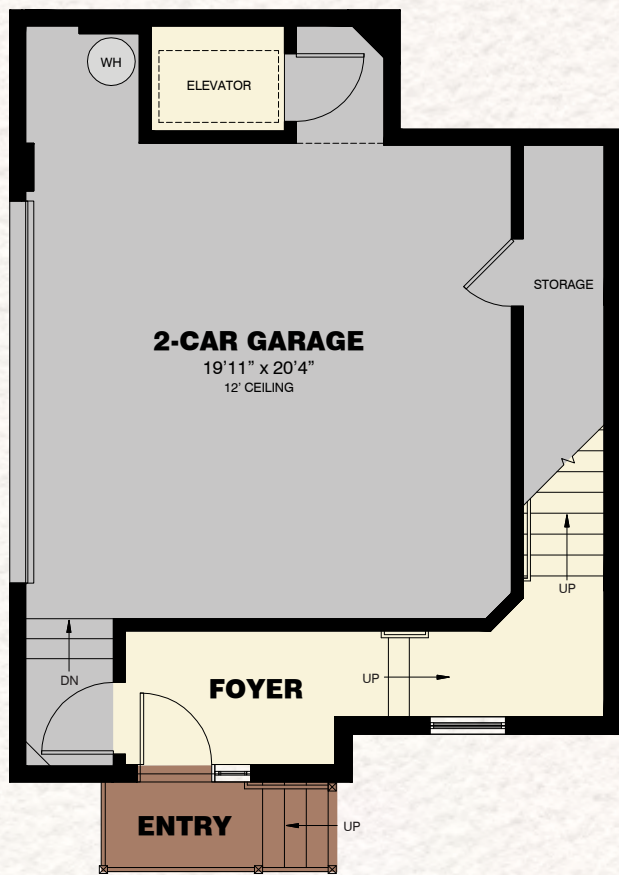
AVAILABLE
WRAP-AROUND
BALCONY



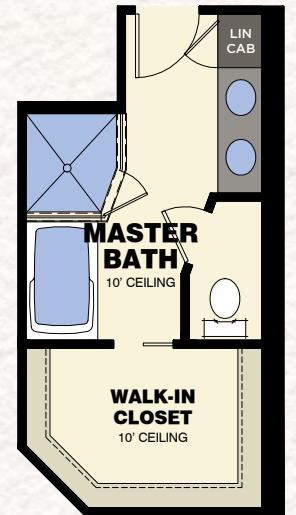
THIRD FLOOR
OBSERVATORY



SECOND FLOOR PLAN



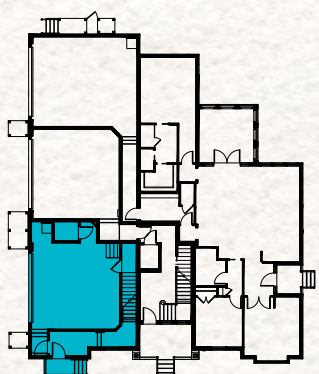
FIRST FLOOR PLAN



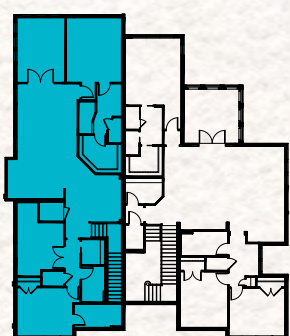
AVAILABLE
MASTER BATH
VARIATION



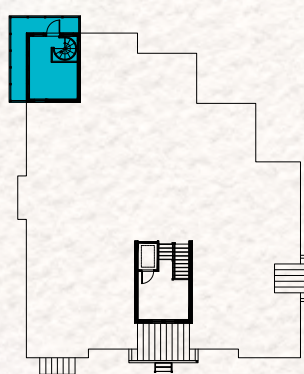
AVAILABLE
BEDROOM
VARIATION



Level 1



Level 2



Level 3

First Floor	144 S.F.
Second Floor	1,843 S.F.
Third Floor Observatory	173 S.F.
Total Living Area	2,160 S.F.
2-Car Garage w/Storage	557 S.F.
Entry	23 S.F.
Elevator	24 S.F.
Observatory Balcony	18 S.F.
Total	2,782 S.F.

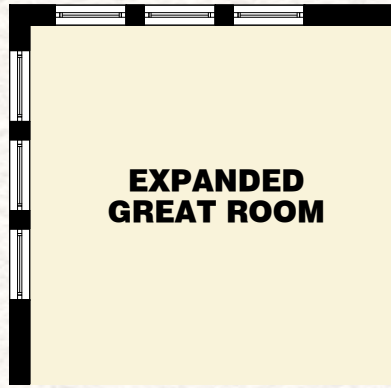
Optional Wrap-Around Balcony 113 S.F.

THE SABAL COLLECTION

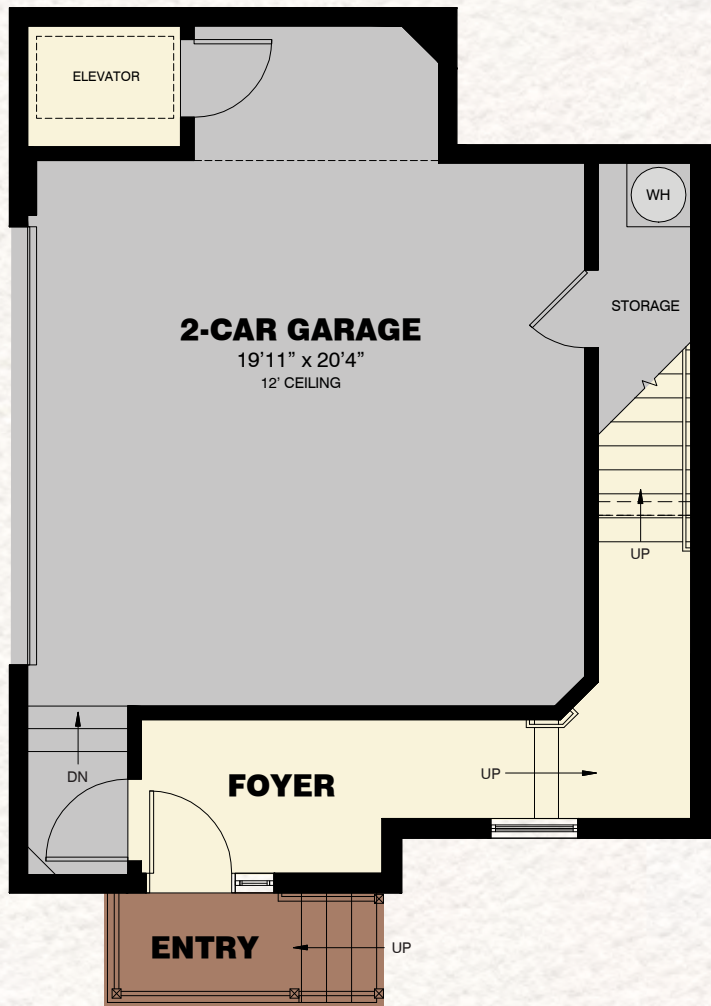
ORCHID

2 Bedrooms / 2 Baths / Den / Sun Room / 2-Car Garage

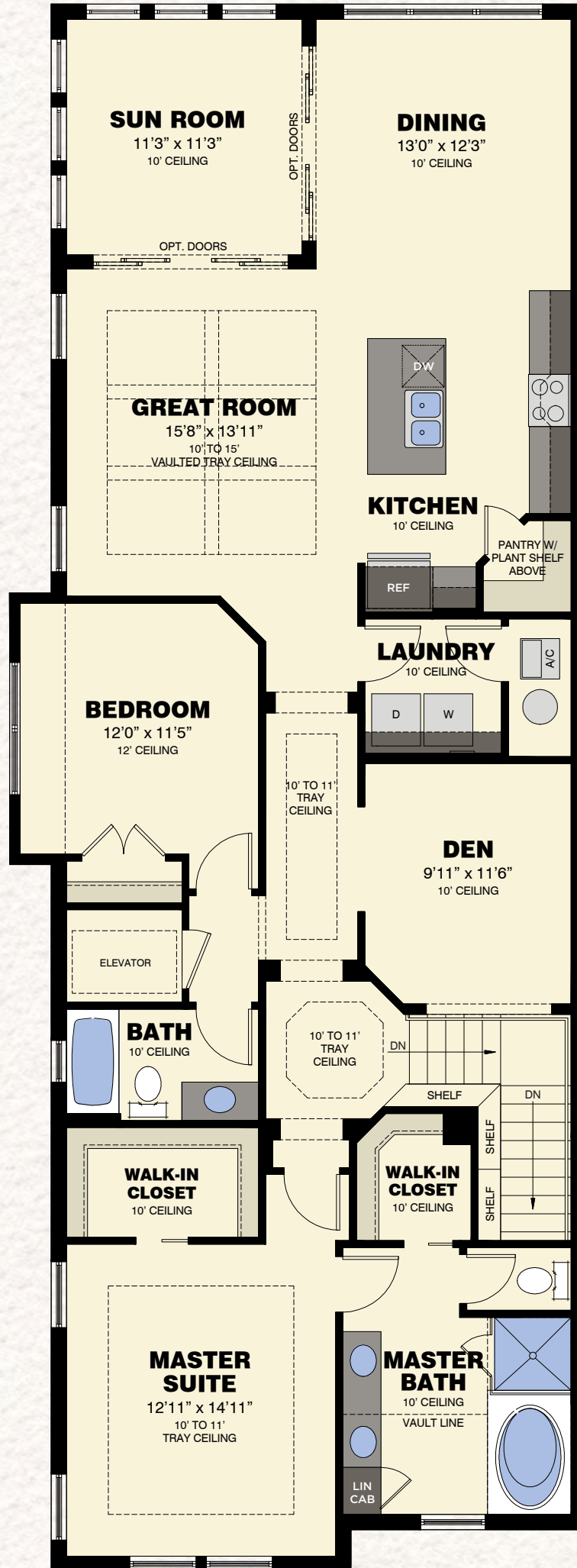
The Isles[™]
OF COLLIER PRESERVE



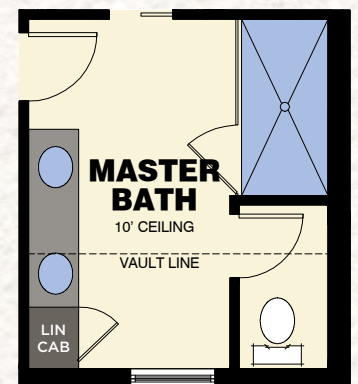
AVAILABLE EXPANDED GREAT ROOM VARIATION



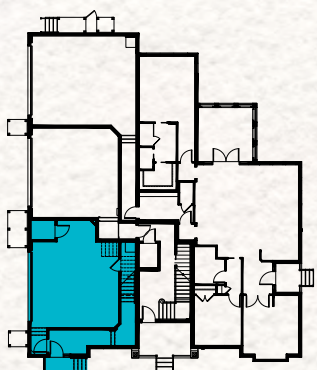
FIRST FLOOR PLAN



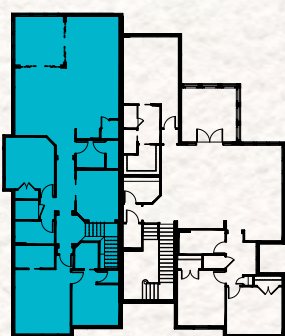
SECOND FLOOR PLAN



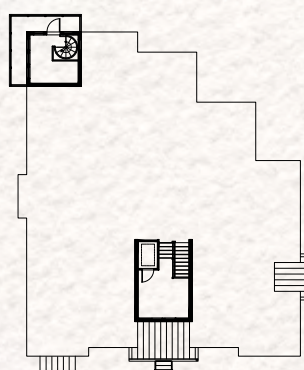
AVAILABLE MASTER BATH VARIATION



Level 1



Level 2



Level 3

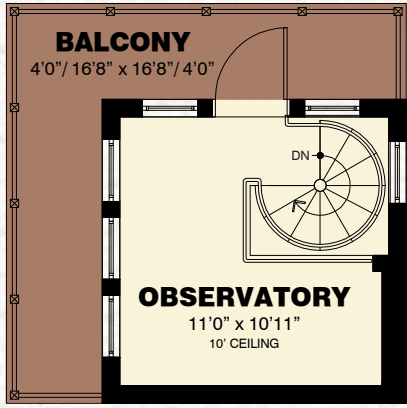
First Floor	144 S.F.
Second Floor	1,867 S.F.
Total Living Area	2,011 S.F.
2-Car Garage w/Storage	557 S.F.
Entry	23 S.F.
Elevator	24 S.F.
Total	2,615 S.F.

THE SABAL COLLECTION
ORCHID GRANDE

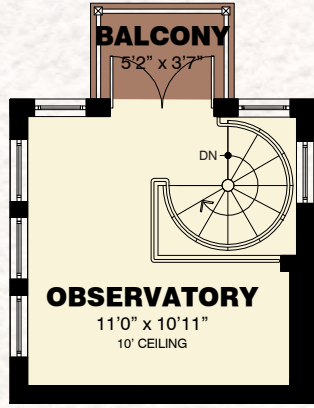
2 Bedrooms / 2 Baths / Den / Sun Room / Observatory / 2-Car Garage

TOUR THIS DECORATED MODEL
 AT THE ISLES OF COLLIER PRESERVE

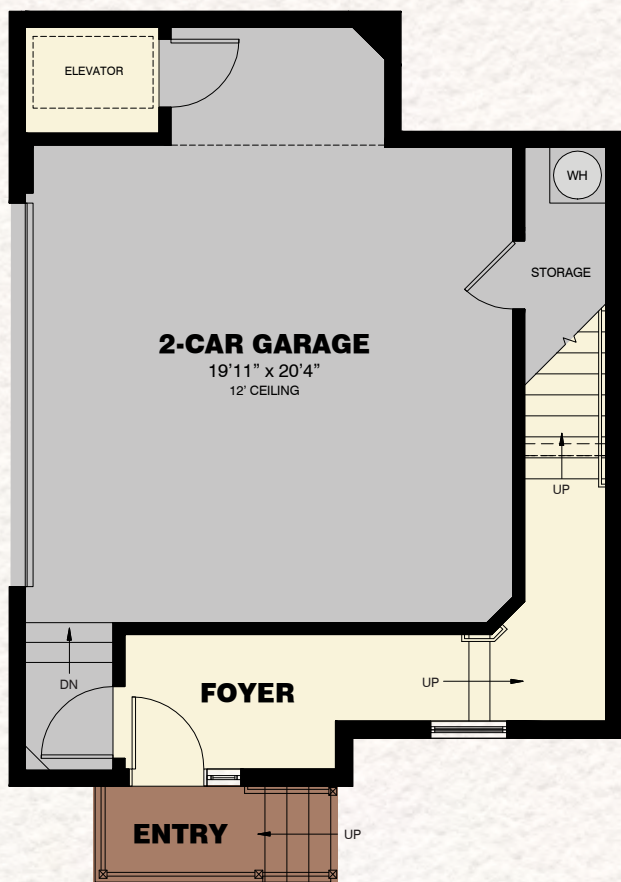
The Isles[™]
 OF COLLIER PRESERVE



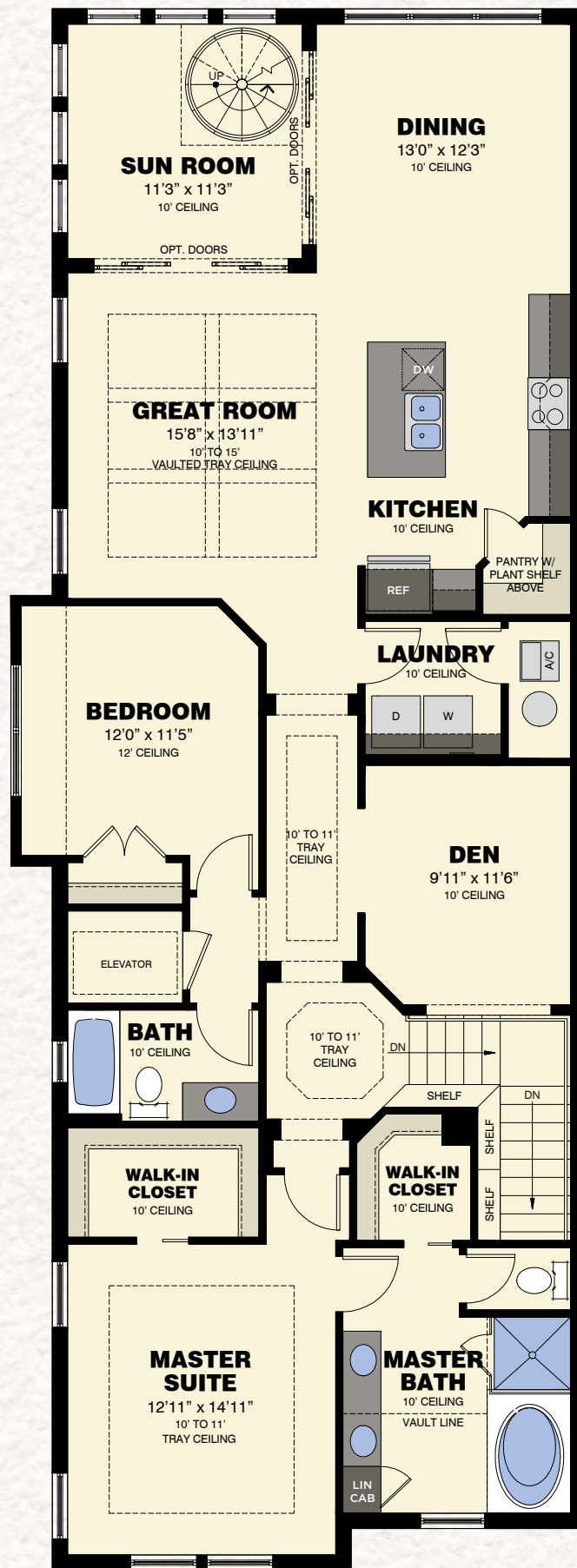
**AVAILABLE
 WRAP-AROUND
 BALCONY**



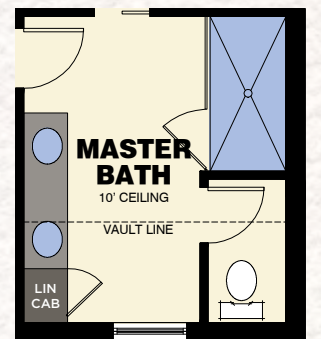
**THIRD FLOOR
 OBSERVATORY**



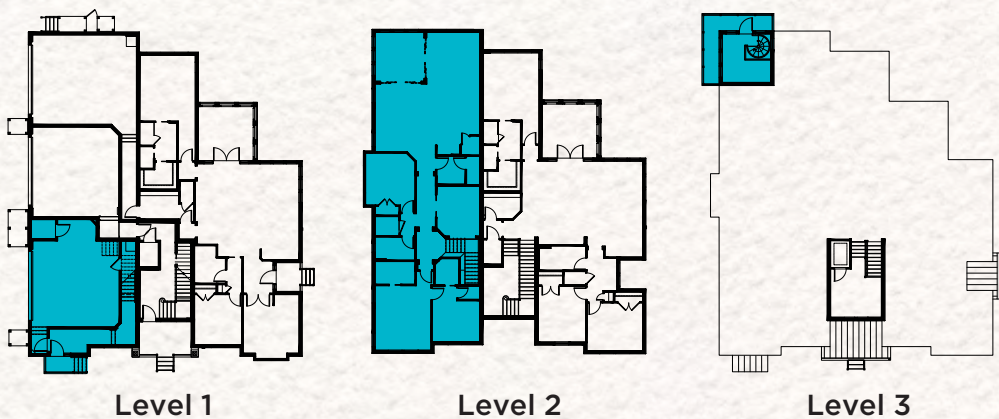
FIRST FLOOR PLAN



SECOND FLOOR PLAN



**AVAILABLE
 MASTER BATH
 VARIATION**



First Floor	144 S.F.
Second Floor	1,867 S.F.
Third Floor Observatory	158 S.F.
Total Living Area	2,169 S.F.
2-Car Garage w/Storage	557 S.F.
Entry	23 S.F.
Elevator	24 S.F.
Observatory Balcony	18 S.F.
Total	2,731 S.F.
Optional Wrap-Around Balcony	100 S.F.

THE SABAL COLLECTION

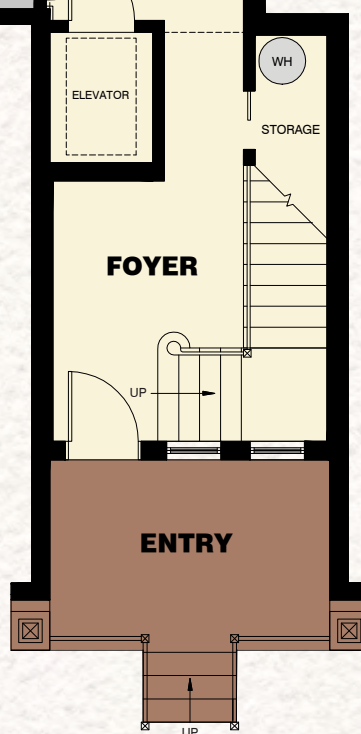
POINCIANA

3 Bedrooms / 2 Baths / Covered Lanai / 2-Car Garage

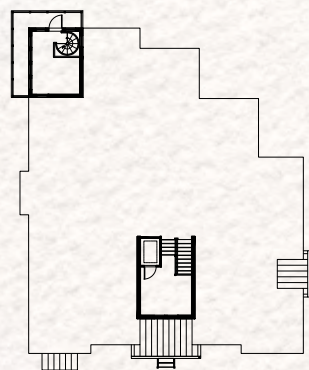
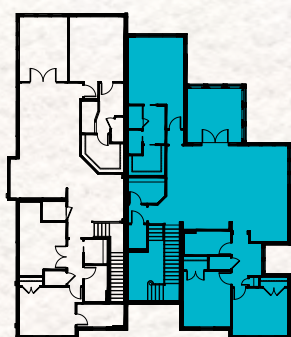
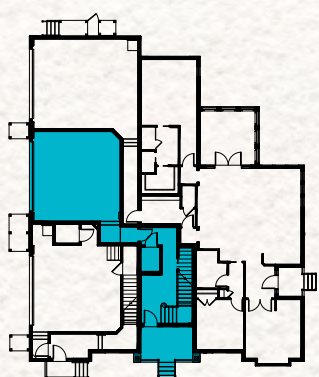
The Isles[™]
OF COLLIER PRESERVE



FIRST FLOOR PLAN



AVAILABLE DEN VARIATION



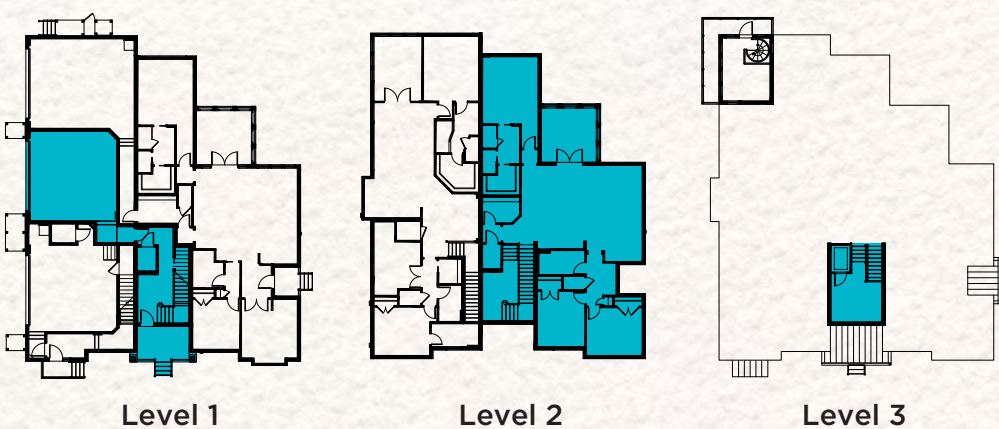
First Floor	252 S.F.
Second Floor	1,700 S.F.
Total Living Area	1,952 S.F.
2-Car Garage	481 S.F.
Entry	95 S.F.
Lanai	184 S.F.
Elevator	24 S.F.
Total	2,736 S.F.

THE SABAL COLLECTION

POINCIANA RETREAT

3 Bedrooms / 2 Baths / Covered Lanai / Retreat / 2-Car Garage

The Isles
OF COLLIER PRESERVE



First Floor	252 S.F.
Second Floor	1,700 S.F.
Third Floor Retreat	125 S.F.
Total Living Area	2,077 S.F.
2-Car Garage	481 S.F.
Covered Entry	95 S.F.
Covered Lanai	184 S.F.
Elevator	24 S.F.
Total	2,861 S.F.

Inspired by nature. *Imagined* by Minto.



THE CYPRESS COLLECTION



THE CYPRESS COLLECTION

CARIBWOOD

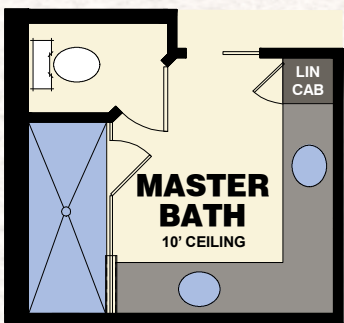
3 Bedrooms / 3 Baths / Den / Sun Room / 2-Car Garage

TOUR THIS DECORATED MODEL
AT THE ISLES OF COLLIER PRESERVE

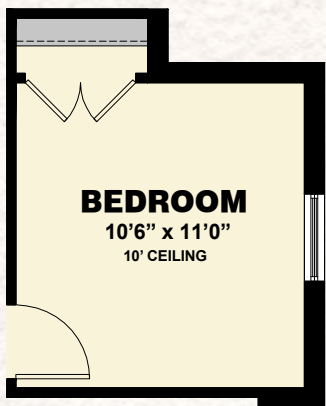
The Isles[™]
OF COLLIER PRESERVE



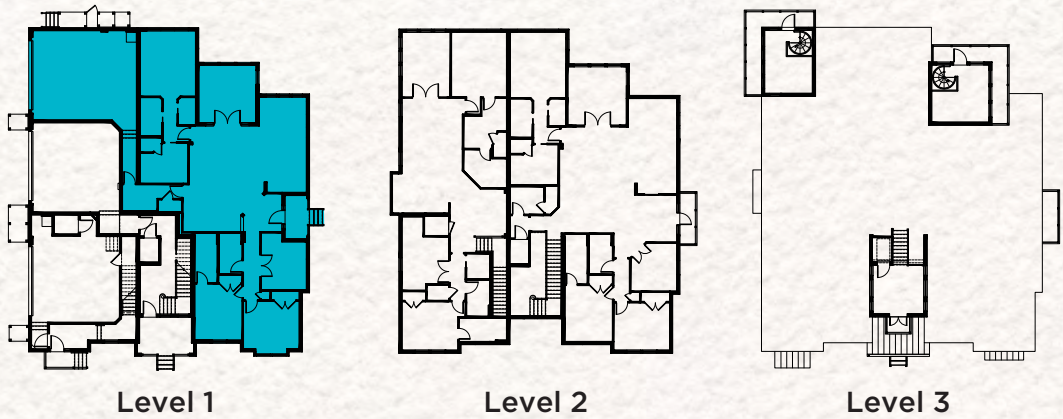
AVAILABLE MASTER BATH
VARIATION



AVAILABLE BEDROOM
VARIATION



FLOOR PLAN



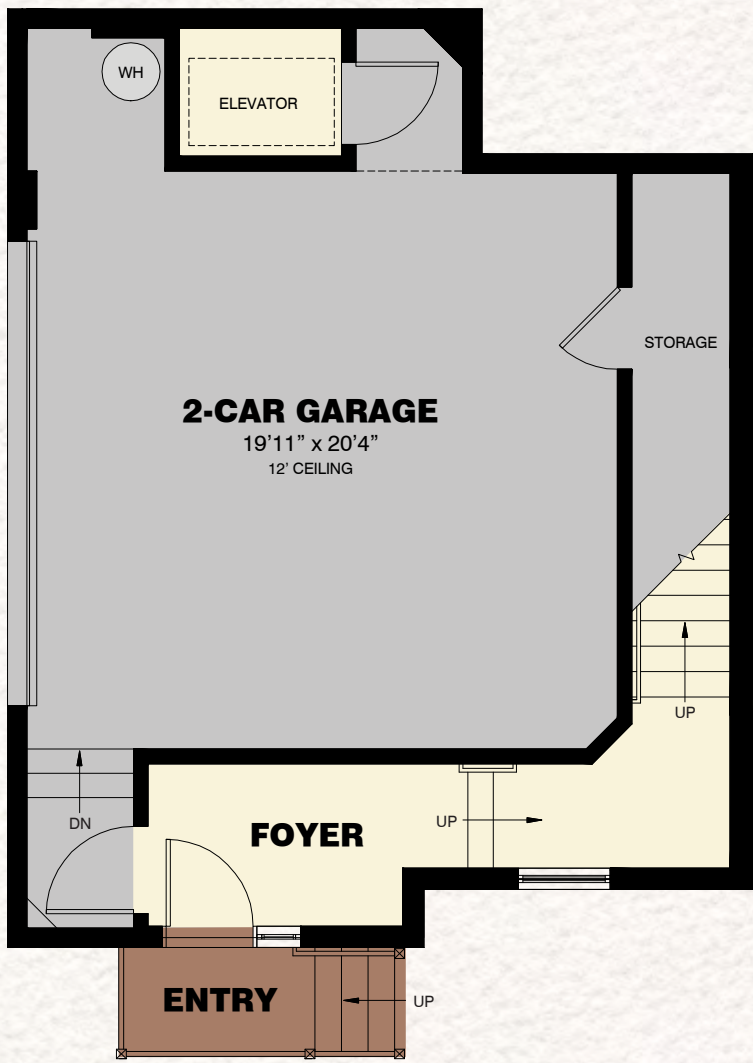
Total Living Area	2,214 S.F.
2-Car Garage	602 S.F.
Entry	57 S.F.
Total	2,873 S.F.

THE CYPRESS COLLECTION

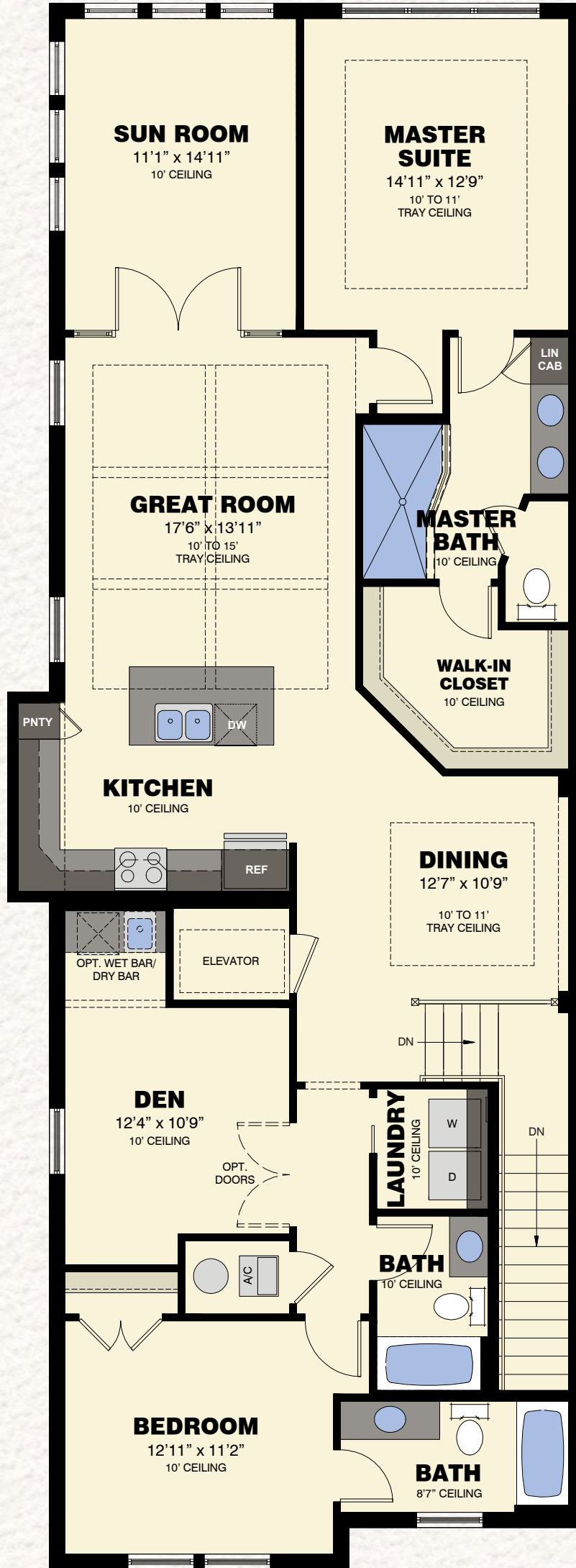
OLEANDER

2 Bedrooms / 3 Baths / Den / Sun Room / 2-Car Garage

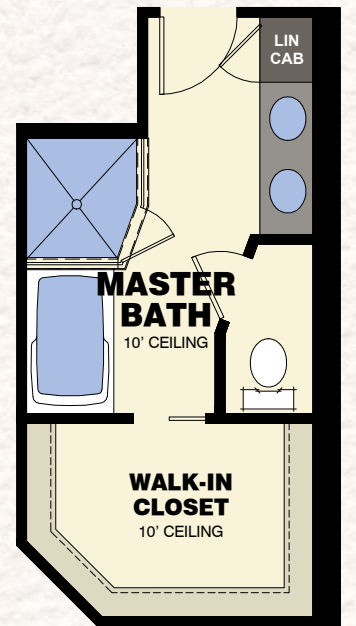
The Isles
OF COLLIER PRESERVE



FIRST FLOOR PLAN



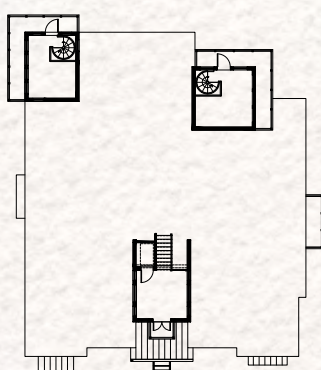
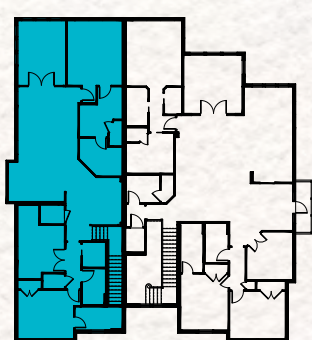
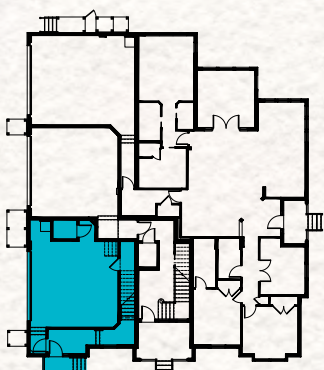
SECOND FLOOR PLAN



AVAILABLE MASTER BATH VARIATION



AVAILABLE BEDROOM VARIATION

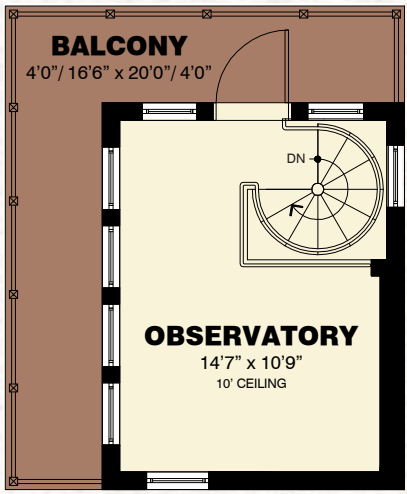


First Floor	144 S.F.
Second Floor	1,843 S.F.
Total Living Area	1,987 S.F.
2-Car Garage w/Storage	557 S.F.
Entry	23 S.F.
Elevator	24 S.F.
Total	2,591 S.F.

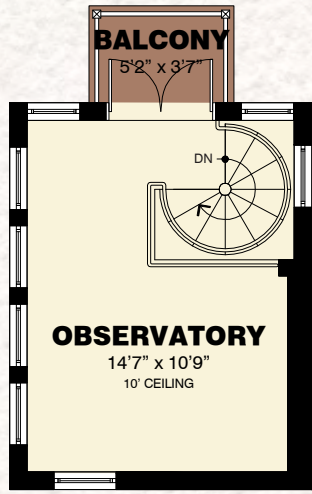
THE CYPRESS COLLECTION
OLEANDER GRANDE

2 Bedrooms / 3 Baths / Den / Sun Room / Observatory / 2-Car Garage

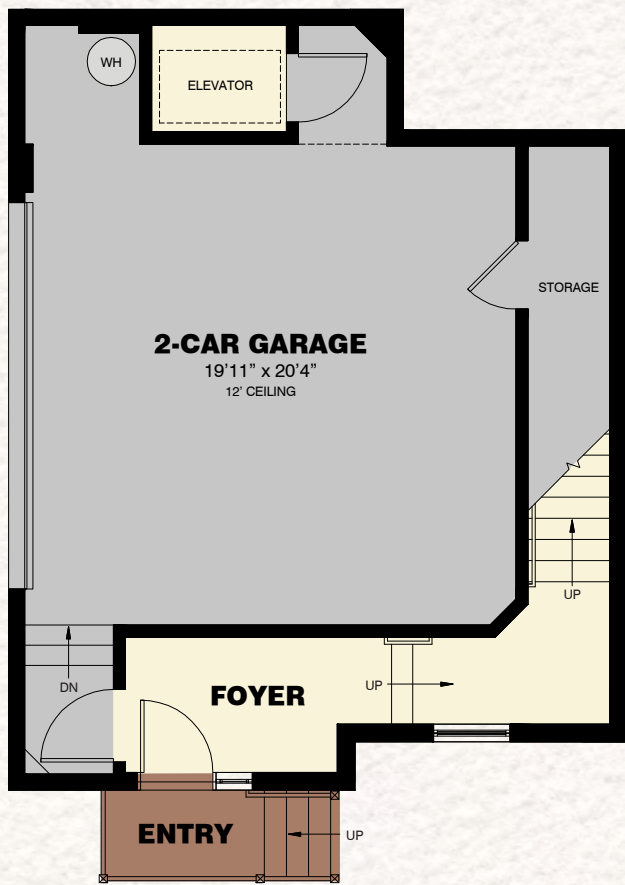
The Isles[™]
OF COLLIER PRESERVE



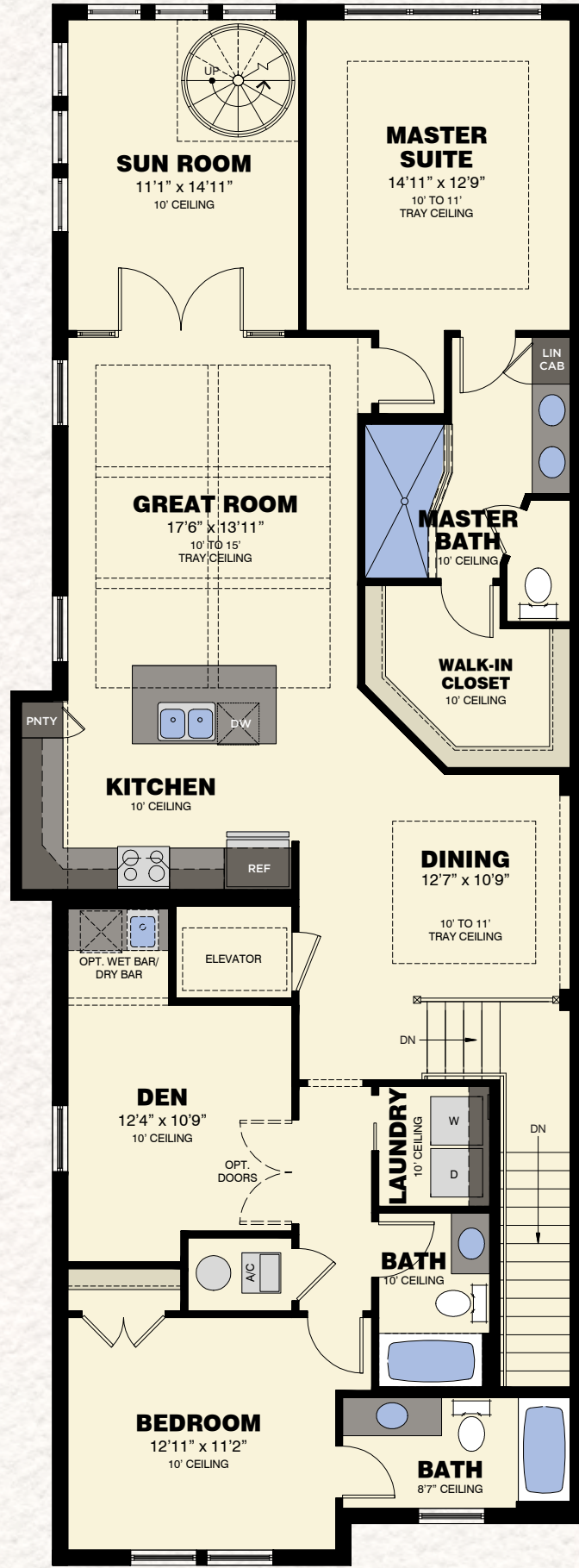
AVAILABLE
WRAP-AROUND
BALCONY



THIRD FLOOR
OBSERVATORY



FIRST FLOOR PLAN



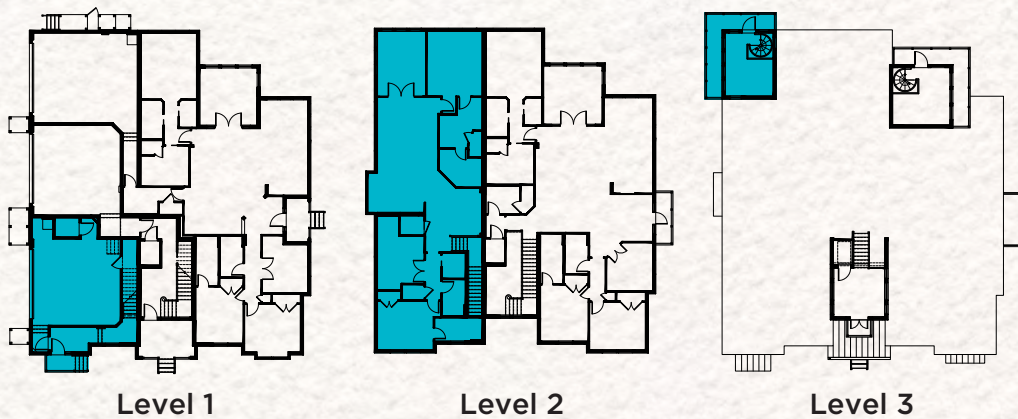
SECOND FLOOR PLAN



AVAILABLE
MASTER BATH
VARIATION



AVAILABLE
BEDROOM
VARIATION



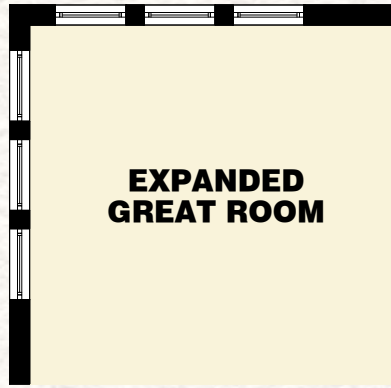
First Floor	144 S.F.
Second Floor	1,843 S.F.
Third Floor Observatory	173 S.F.
Total Living Area	2,160 S.F.
2-Car Garage w/Storage	557 S.F.
Entry	23 S.F.
Elevator	24 S.F.
Observatory Balcony	18 S.F.
Total	2,782 S.F.
Optional Wrap-Around Balcony	113 S.F.

THE CYPRESS COLLECTION

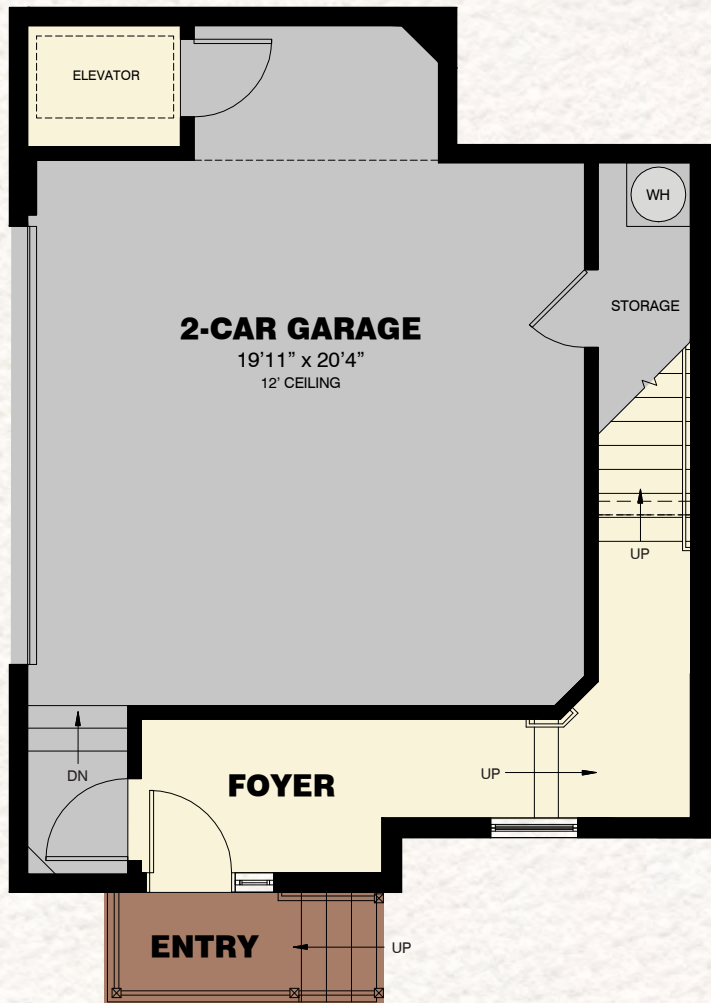
ORCHID

2 Bedrooms / 2 Baths / Den / Sun Room / 2-Car Garage

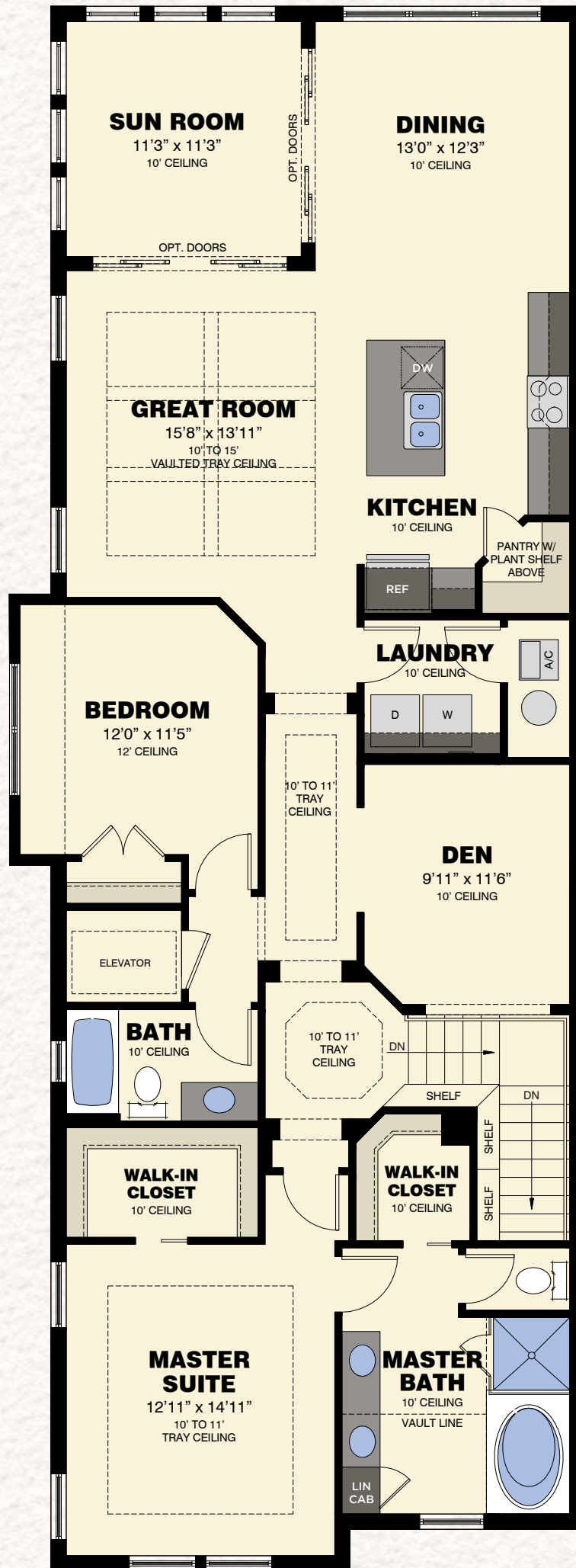
The Isles[™]
OF COLLIER PRESERVE



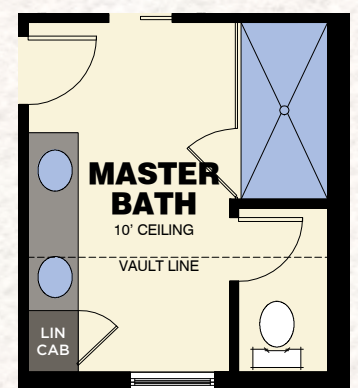
AVAILABLE EXPANDED GREAT ROOM VARIATION



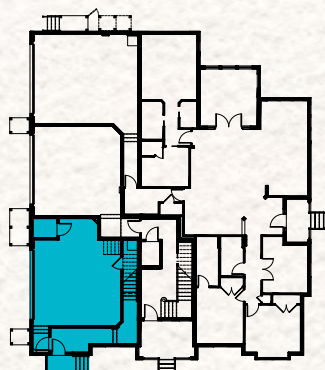
FIRST FLOOR PLAN



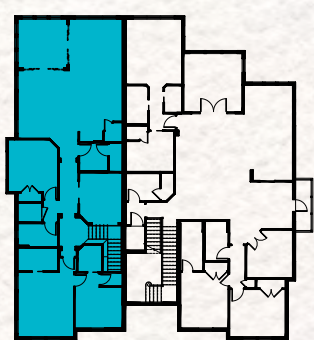
SECOND FLOOR PLAN



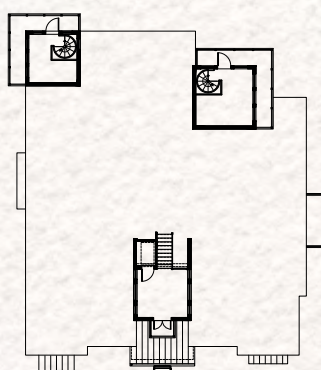
AVAILABLE MASTER BATH VARIATION



Level 1



Level 2



Level 3

First Floor	144 S.F.
Second Floor	1,867 S.F.
Total Living Area	2,011 S.F.
2-Car Garage w/Storage	557 S.F.
Entry	23 S.F.
Elevator	24 S.F.
Total	2,615 S.F.

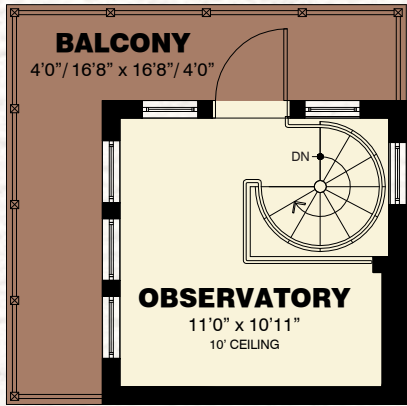
THE CYPRESS COLLECTION

ORCHID GRANDE

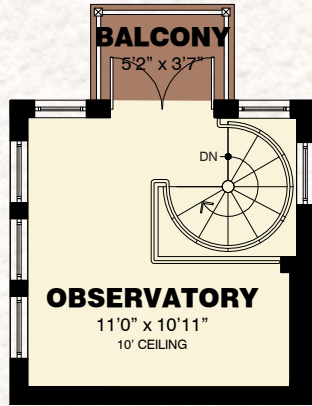
2 Bedrooms / 2 Baths / Den / Sun Room / Observatory / 2-Car Garage

TOUR THIS DECORATED MODEL
AT THE ISLES OF COLLIER PRESERVE

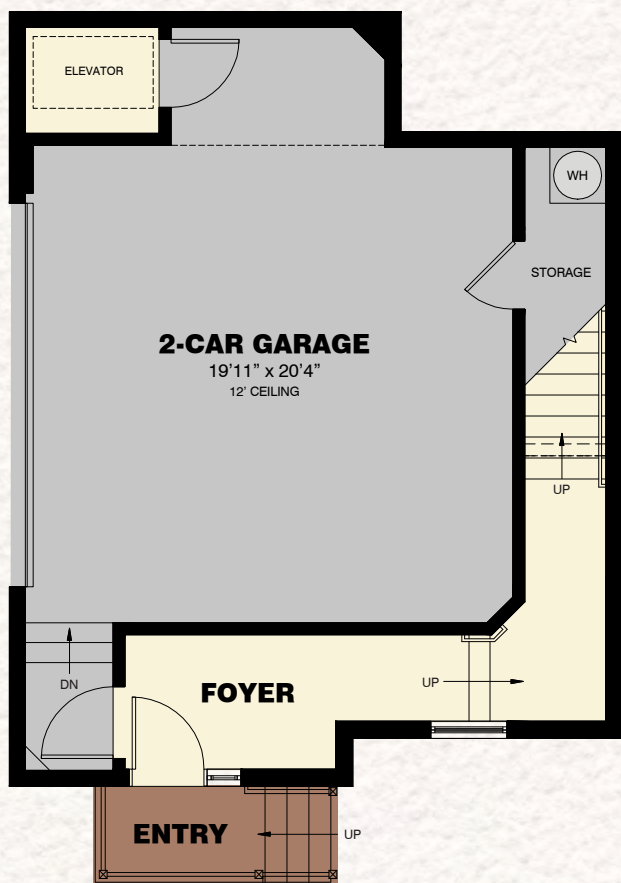
The Isles[™]
OF COLLIER PRESERVE



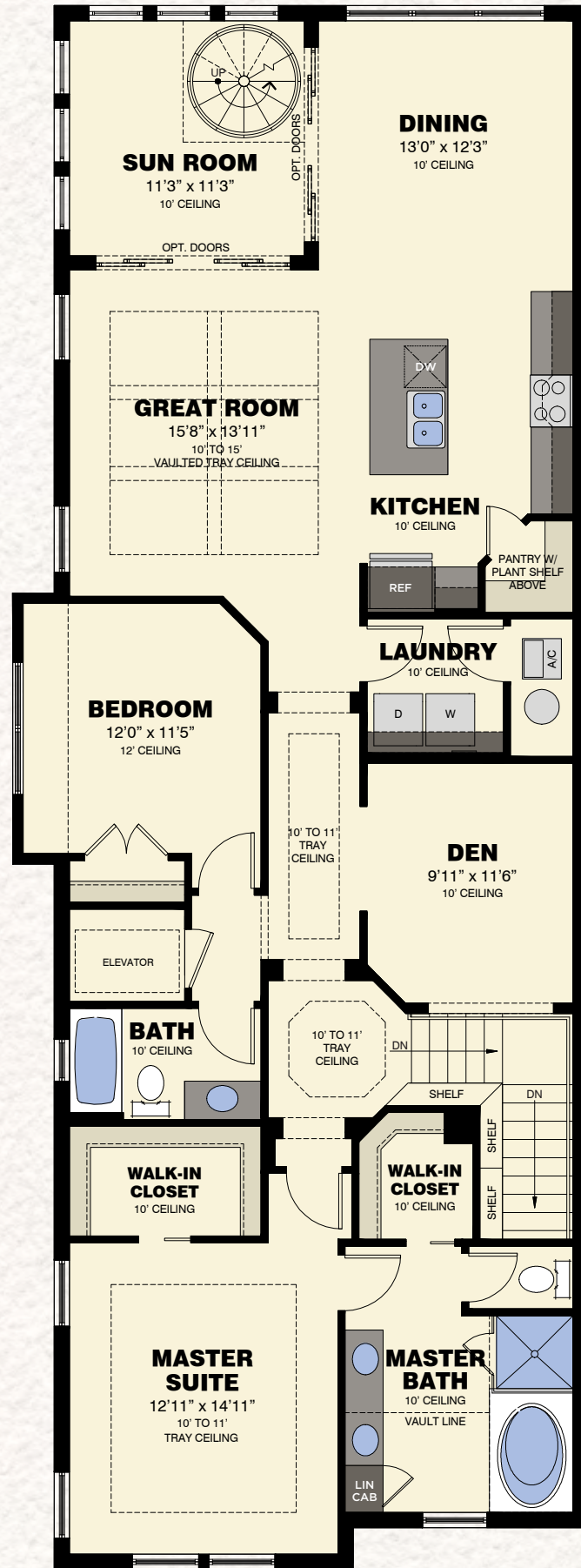
**AVAILABLE
WRAP-AROUND
BALCONY**



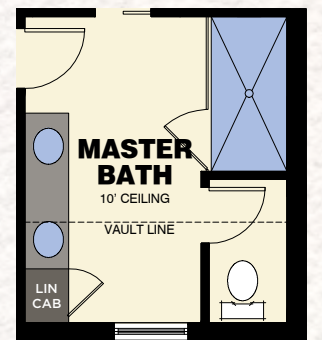
**THIRD FLOOR
OBSERVATORY**



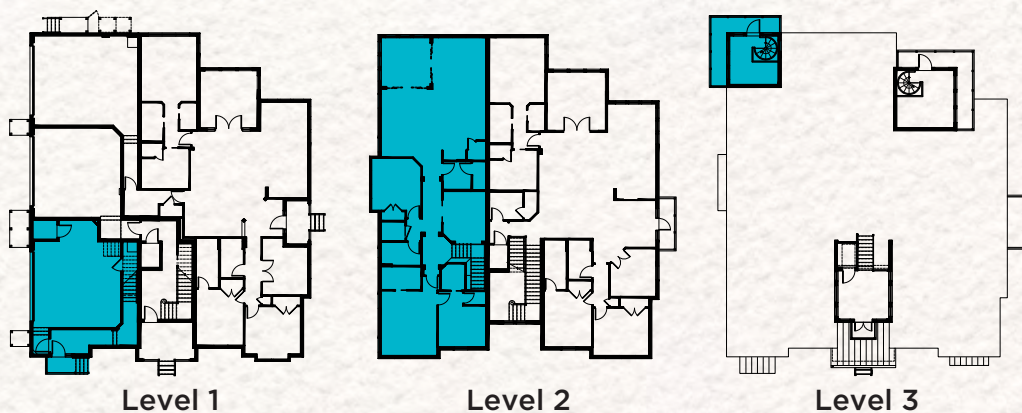
FIRST FLOOR PLAN



SECOND FLOOR PLAN



**AVAILABLE
MASTER BATH
VARIATION**



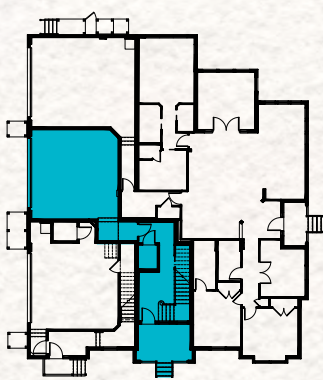
First Floor	144 S.F.
Second Floor	1,867 S.F.
Third Floor Observatory	158 S.F.
Total Living Area	2,169 S.F.
2-Car Garage w/Storage	557 S.F.
Entry	23 S.F.
Elevator	24 S.F.
Observatory Balcony	18 S.F.
Total	2,731 S.F.
Optional Wrap-Around Balcony	100 S.F.

THE CYPRESS COLLECTION

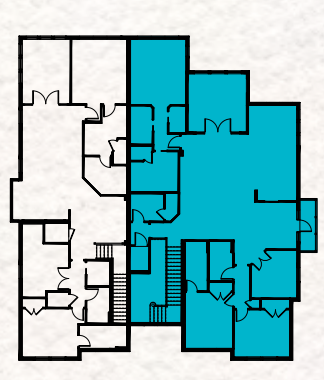
HIBISCUS

3 Bedrooms / 3 Baths / Den / Sun Room / 2-Car Garage

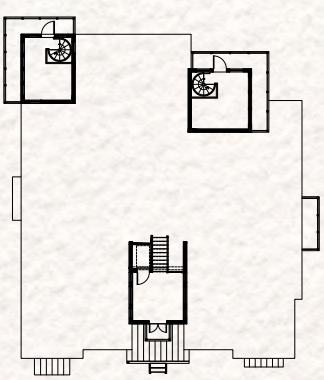
The Isles
OF COLLIER PRESERVE



Level 1



Level 2



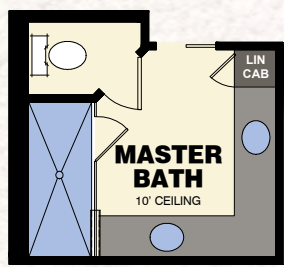
Level 3

First Floor	258 S.F.
Second Floor	2,313 S.F.
Total Living Area	2,571 S.F.
2-Car Garage	486 S.F.
Entry	94 S.F.
Elevator	24 S.F.
Covered Balcony	41 S.F.
Total	3,216 S.F.

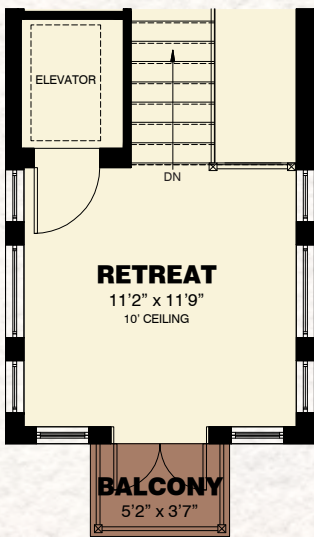
THE CYPRESS COLLECTION
HIBISCUS RETREAT

3 Bedrooms / 3 Baths / Den / Sun Room / Retreat / 2-Car Garage

The Isles[™]
 OF COLLIER PRESERVE



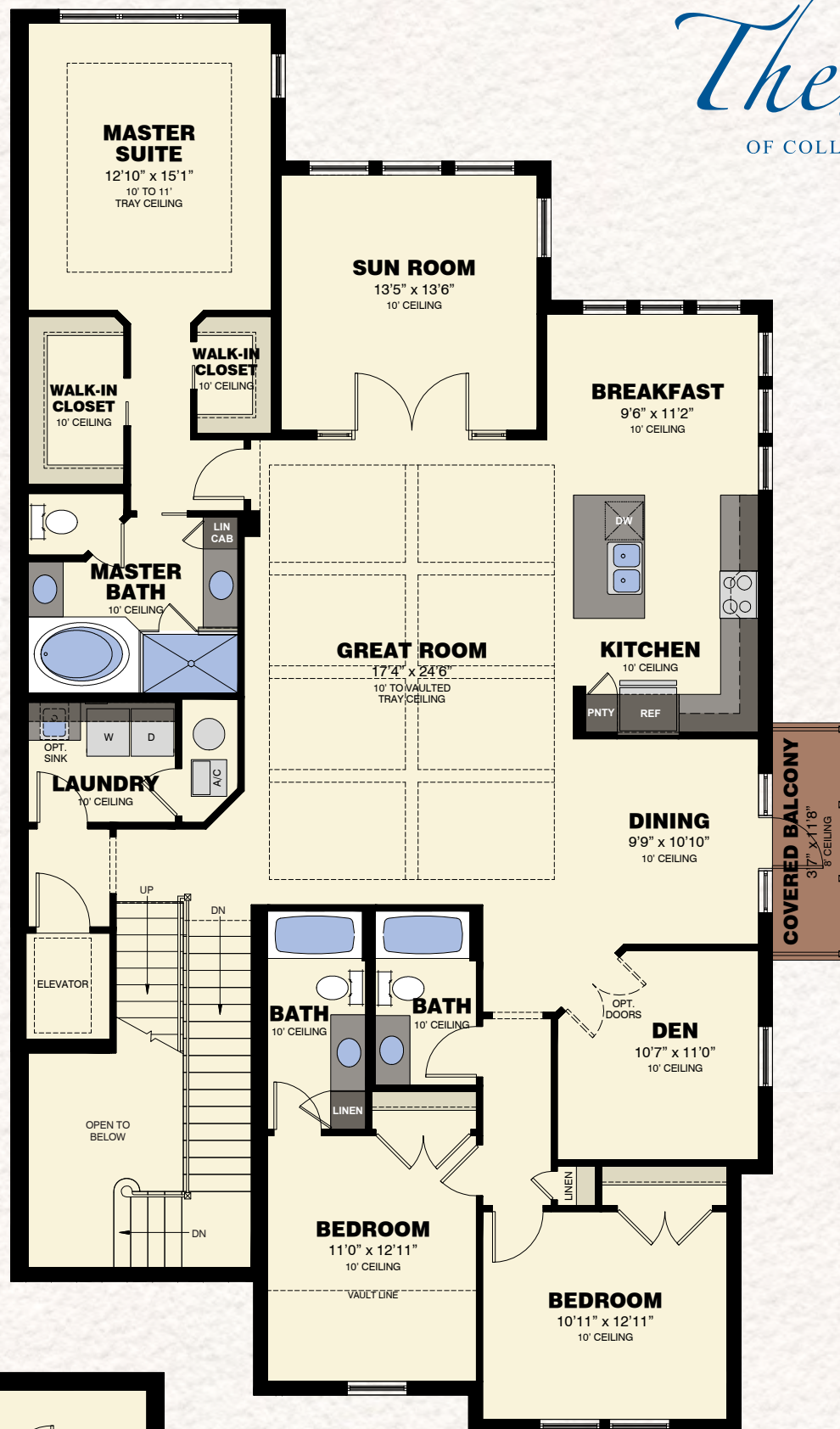
**AVAILABLE
 MASTER BATH
 VARIATION**



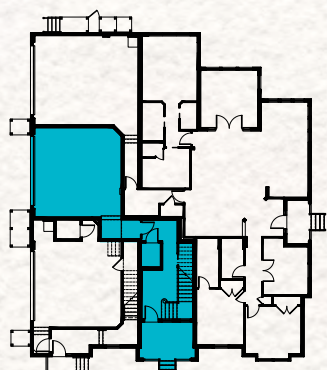
**THIRD FLOOR
 RETREAT**



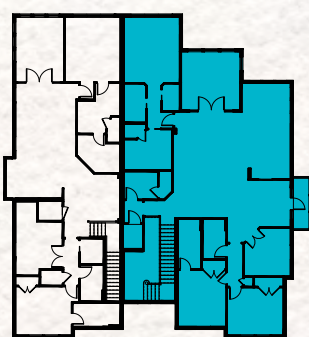
FIRST FLOOR PLAN



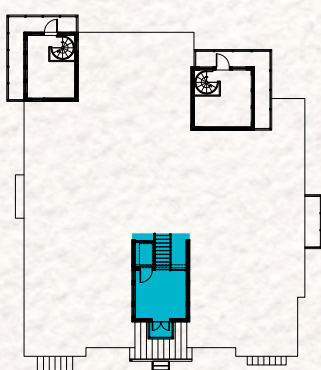
SECOND FLOOR PLAN



Level 1



Level 2



Level 3

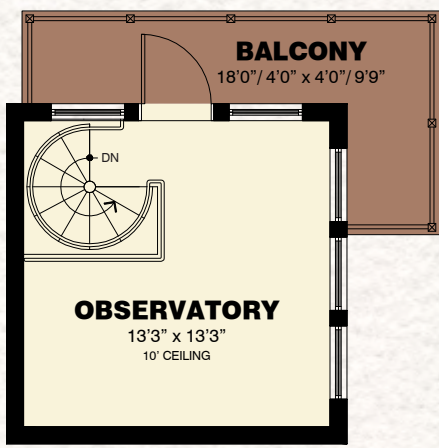
First Floor	258 S.F.
Second Floor	2,313 S.F.
Third Floor Retreat	162 S.F.
Total Living Area	2,733 S.F.
2-Car Garage	486 S.F.
Entry	94 S.F.
Elevator	24 S.F.
Covered Balcony	41 S.F.
Retreat Balcony	18 S.F.
Total	3,396 S.F.

THE CYPRESS COLLECTION

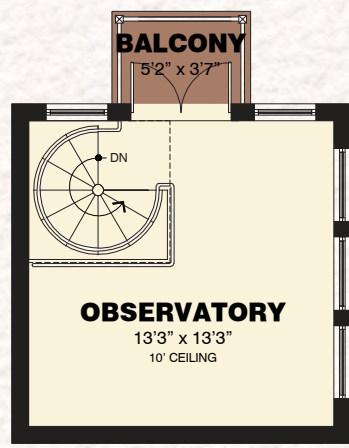
HIBISCUS GRANDE

3 Bedrooms / 3 Baths / Den / Sun Room / Observatory / 2-Car Garage

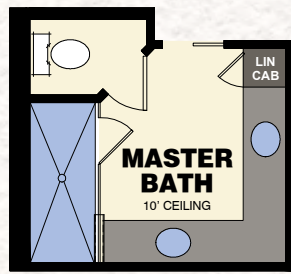
The Isles
OF COLLIER PRESERVE



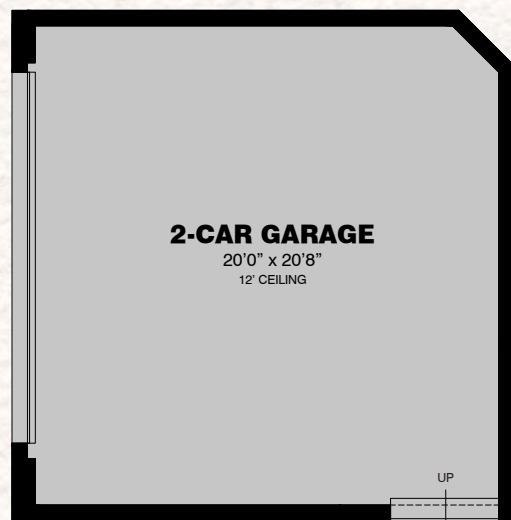
AVAILABLE
WRAP-AROUND
BALCONY



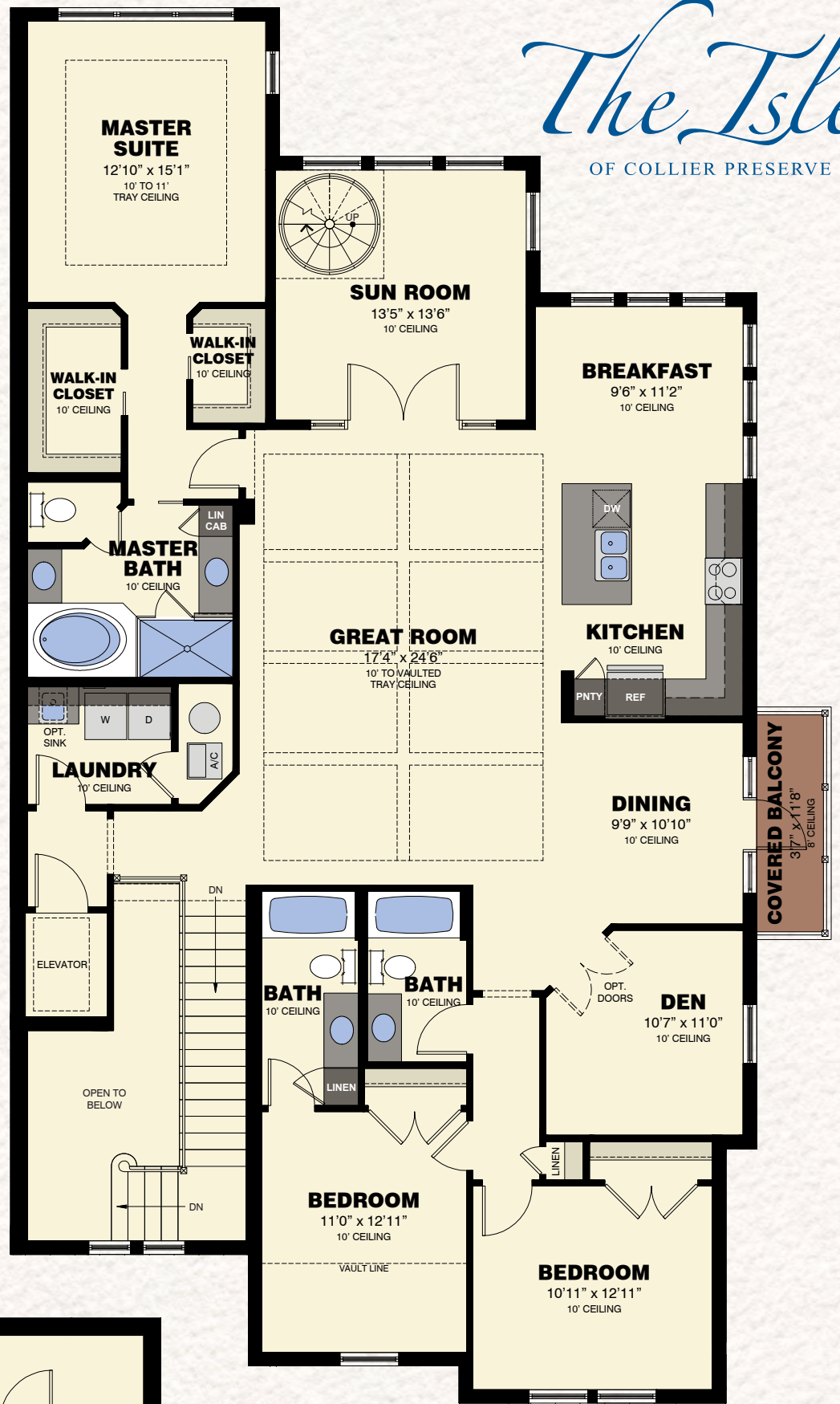
THIRD FLOOR
OBSERVATORY



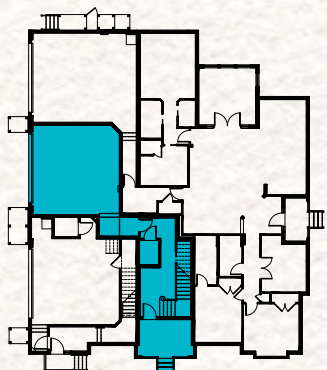
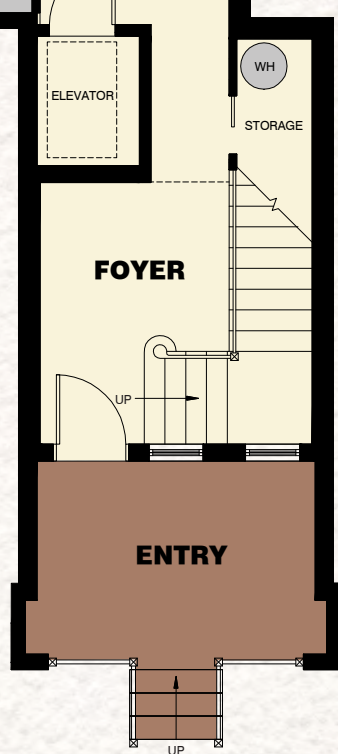
AVAILABLE
MASTER BATH
VARIATION



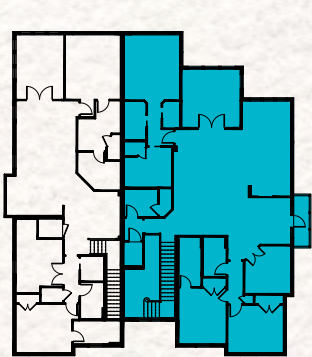
FIRST FLOOR PLAN



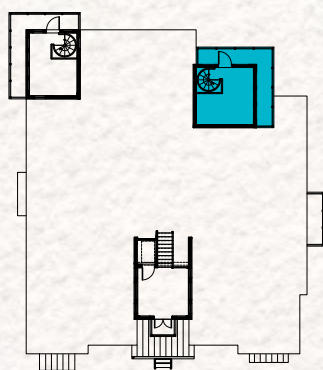
SECOND FLOOR PLAN



Level 1



Level 2



Level 3

First Floor	258 S.F.
Second Floor	2,313 S.F.
Third Floor Observatory	215 S.F.
Total Living Area	2,786 S.F.
2-Car Garage	486 S.F.
Entry	94 S.F.
Elevator	24 S.F.
Covered Balcony	41 S.F.
Observatory Balcony	18 S.F.
Total	3,449 S.F.

Optional Wrap-Around Balcony 81 S.F.

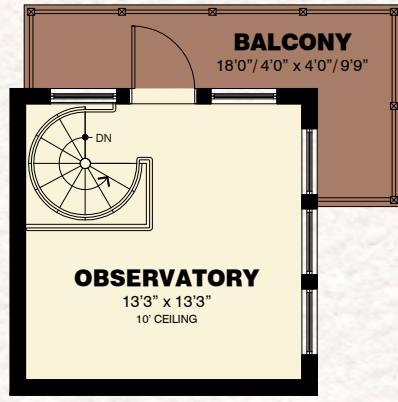
THE CYPRESS COLLECTION

HIBISCUS GRANDE RETREAT

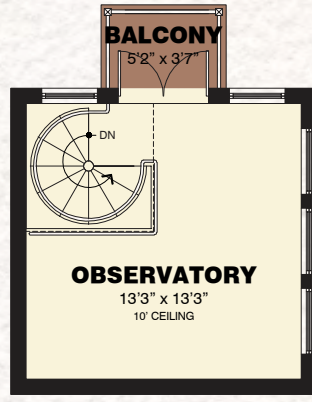
3 Bedrooms / 3 Baths / Den / Sun Room / Observatory / Retreat / 2-Car Garage

TOUR THIS DECORATED MODEL AT THE ISLES OF COLLIER PRESERVE

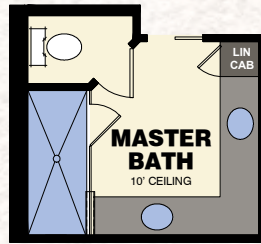
The Isles
OF COLLIER PRESERVE



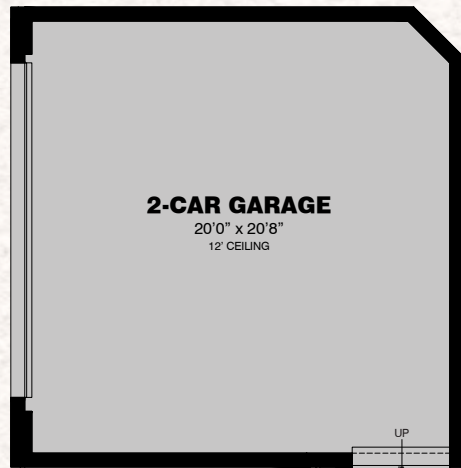
AVAILABLE
WRAP-AROUND
BALCONY



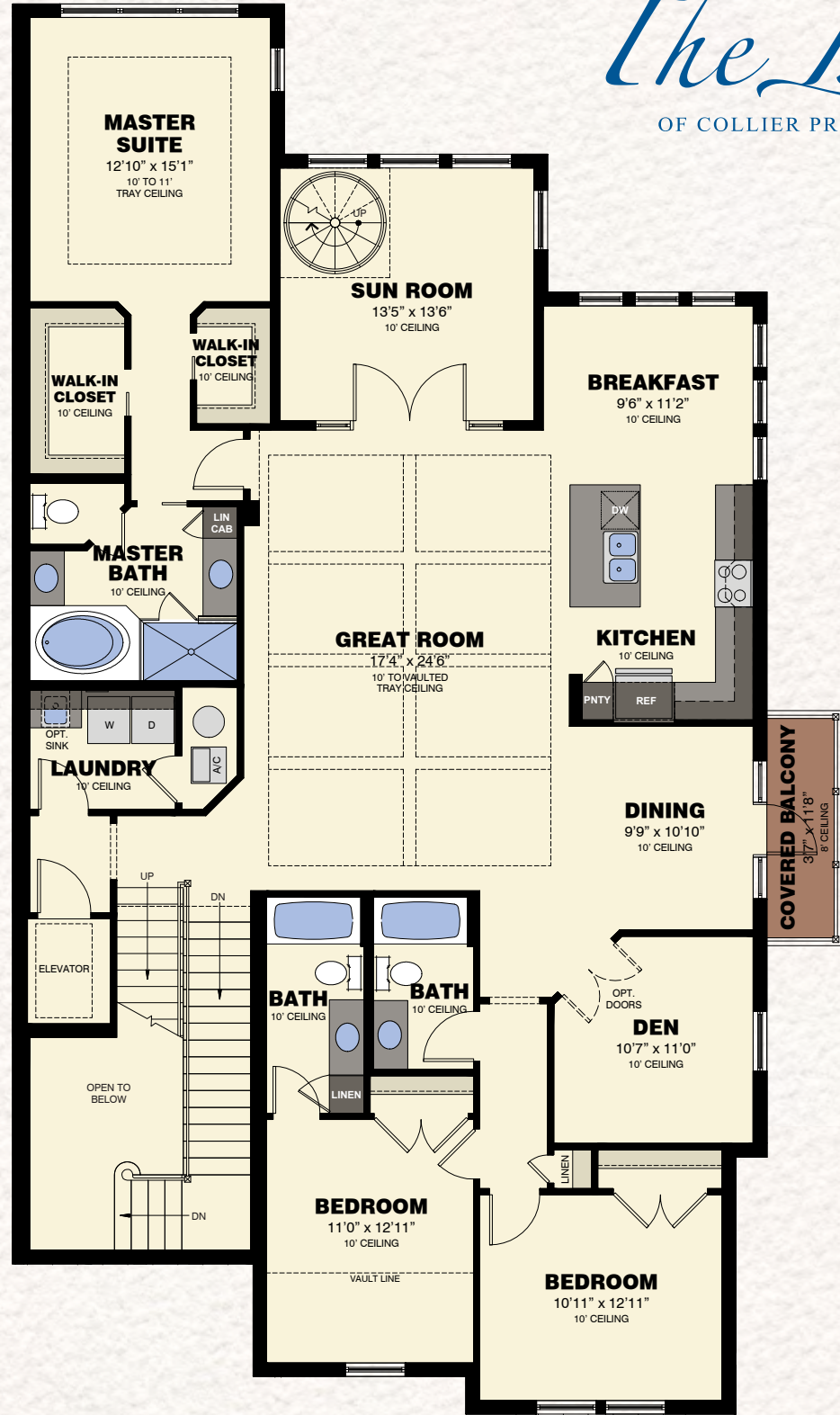
THIRD FLOOR
OBSERVATORY



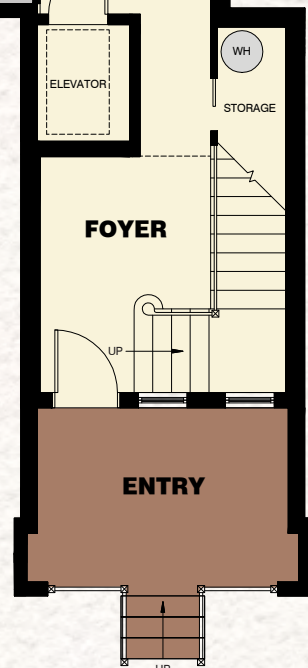
AVAILABLE
MASTER BATH
VARIATION



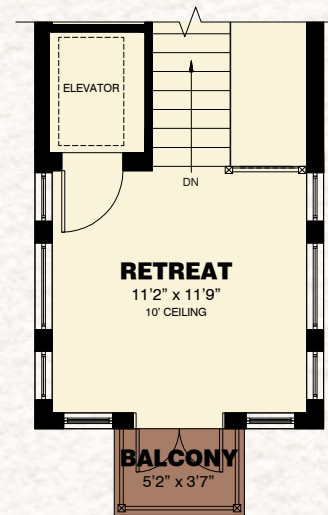
FIRST FLOOR PLAN



SECOND FLOOR PLAN



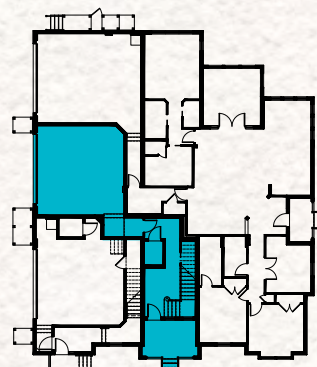
FIRST FLOOR PLAN



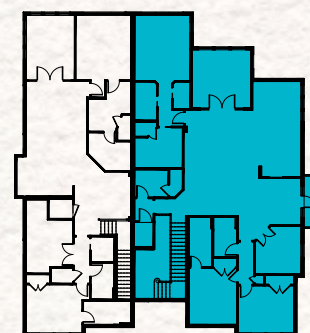
THIRD FLOOR RETREAT

First Floor	258 S.F.
Second Floor	2,313 S.F.
Third Floor Retreat	162 S.F.
Third Floor Observatory	215 S.F.
Total Living Area	2,948 S.F.
2-Car Garage	486 S.F.
Entry	94 S.F.
Elevator	24 S.F.
Observatory Balcony	18 S.F.
Covered Balcony	41 S.F.
Retreat Balcony	18 S.F.
Total	3,629 S.F.

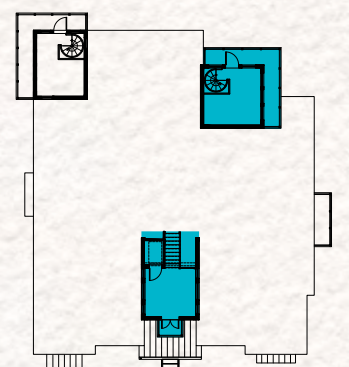
Optional Wrap-Around Balcony 81 S.F.



Level 1



Level 2



Level 3

Florida's *preeminent* homebuilder.



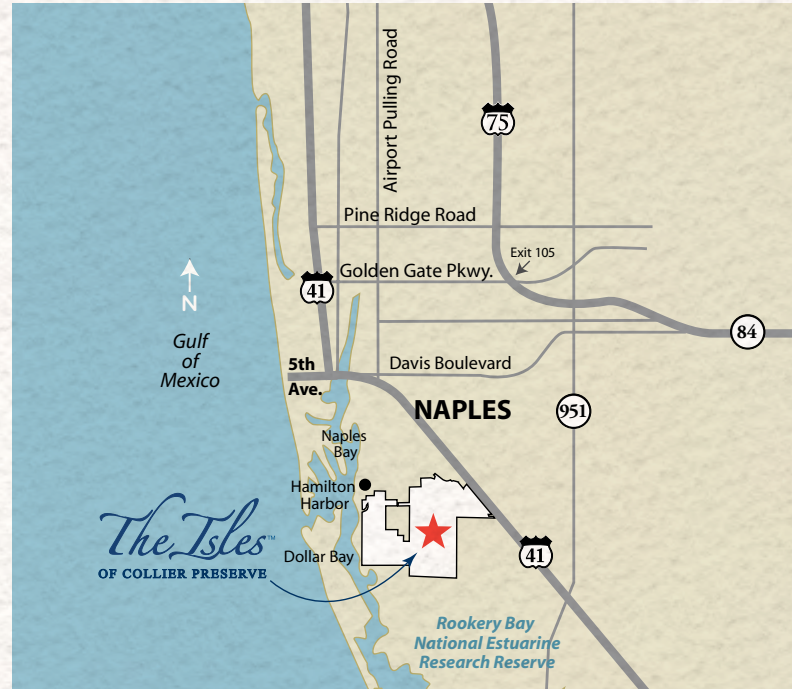
Founded in 1955, Minto is a family-owned business that has grown into Florida's preeminent homebuilder, with more than 80,000 homes built. Minto creates award-winning new homes and communities that provide rich and rewarding lifestyles throughout Florida. In fact, we're ranked #1 by Eliant Homebuyers Choice Awards and have earned numerous other awards for our homes and communities, setting us apart as Florida's most exceptional homebuilder.

We appreciate your interest in The Isles of Collier Preserve. For more information about our award-winning homes and communities throughout Florida, please visit us at mintofla.com.



Ideally located just off the Tamiami Trail (US 41) on the south shore of Naples Bay, The Isles of Collier Preserve offers a one-of-a-kind lifestyle in the heart of all that Southwest Florida has to offer.

At the Isles of Collier Preserve you can enjoy bird watching off your back porch or boutique shopping and dining in Downtown Naples just four short miles away. All the attractions of this world-class destination are convenient to The Isles of Collier Preserve, which is nestled within one of the country's richest coastal environments. It's the best of both worlds, and only Minto could bring it to life.



From I-75, take Exit 105 and travel west on Golden Gate Parkway to Airport Pulling Road. Exit to the right, then turn left onto Airport Pulling Road and continue 3 miles to Tamiami Trail East (US 41). Turn left and continue 2.5 miles to The Isles of Collier Preserve entrance on the right.



5445 Caribe Avenue, Naples, FL 34113
888.604.3138 | mintofla.com

The Isles[™]
OF COLLIER PRESERVE