

LAUREATE PARK

AT LAKE NONA



SALVEO COLLECTION • SINGLE-FAMILY HOME DESIGNS

SALVEO COLLECTION
NICOLLE

3 BEDROOMS, DEN, 2 BATHS, 2-CAR GARAGE



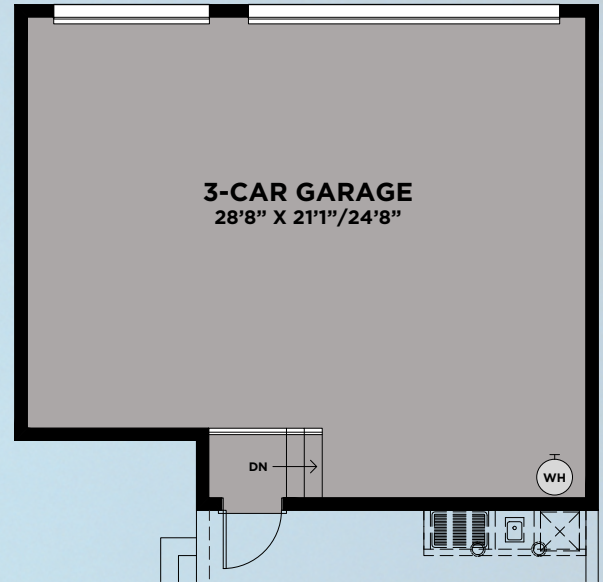
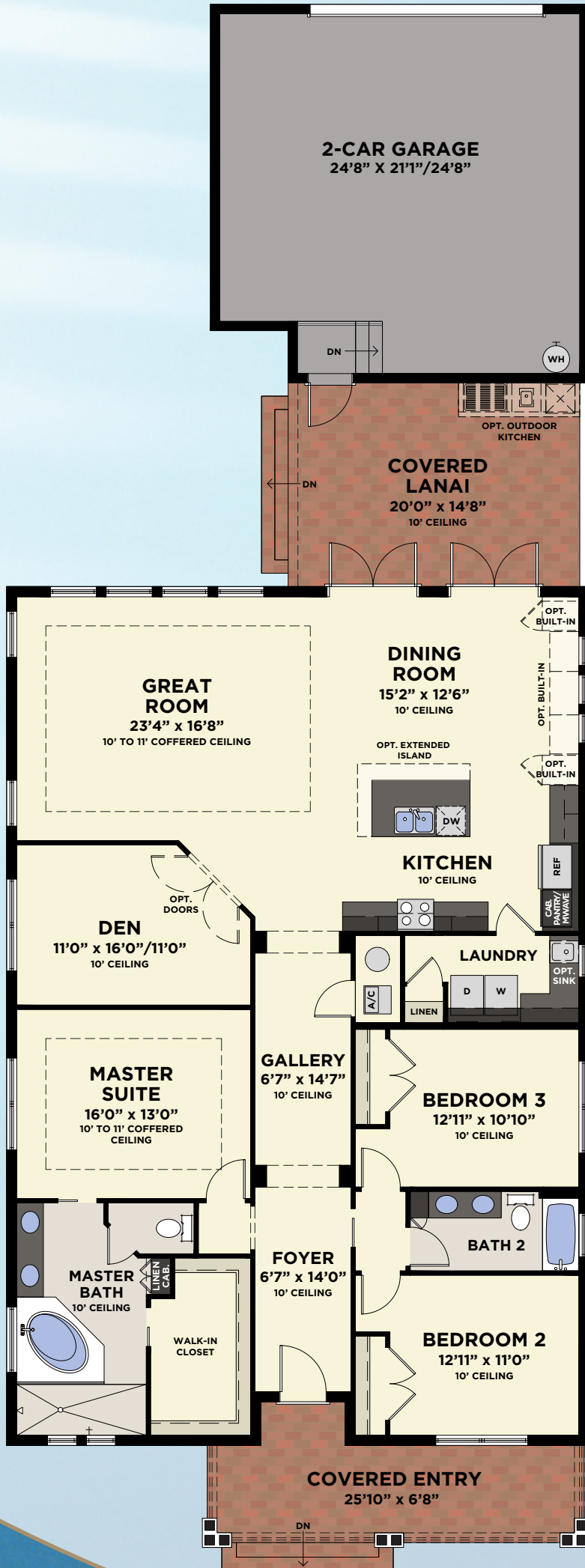
ELEVATION A



ELEVATION B



ELEVATION C



AVAILABLE 3-CAR GARAGE
 (747 SQ. FT.)

NICOLLE

| | |
|----------------------|--------------|
| Total A/C Sq. Ft. | 2,343 |
| 2-Car Garage | 657 |
| Covered Entry | 203 |
| Covered Lanai | 289 |
| Total Sq. Ft. | 3,492 |



AVAILABLE ALTERNATE
 MASTER BATH



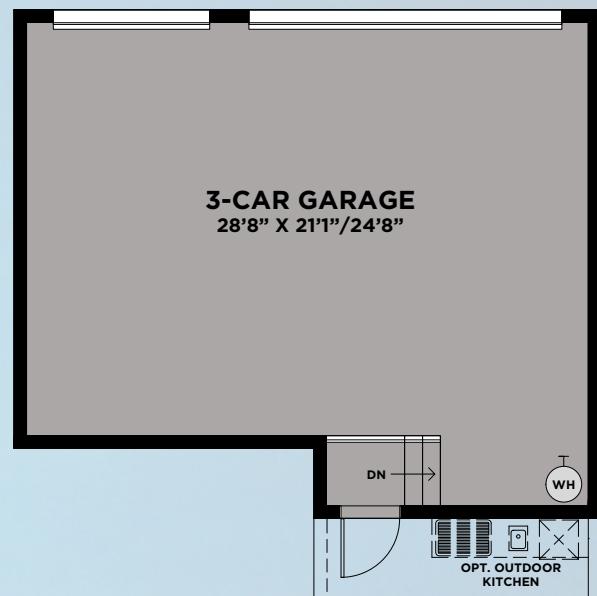
ADRIAN

4 BEDROOMS, DEN, LOFT, 3.5 BATHS, 2-CAR GARAGE

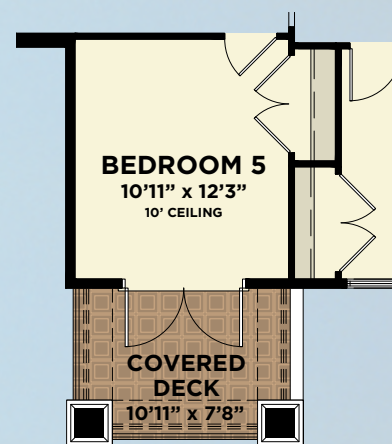
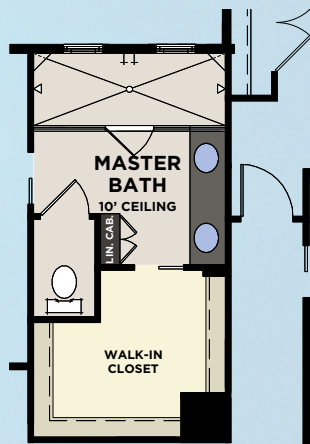


ADRIAN

| | |
|-------------------|-------|
| First Floor | 1,468 |
| Second Floor | 1,290 |
| Total A/C Sq. Ft. | 2,758 |
| 2-Car Garage | 635 |
| Covered Entry | 219 |
| Covered Lanai | 428 |
| Covered Balcony | 90 |
| Total Sq. Ft. | 4,130 |



AVAILABLE 3-CAR GARAGE
(725 SQ. FT.)



AVAILABLE ALTERNATE MASTER BATH

AVAILABLE BEDROOM #5



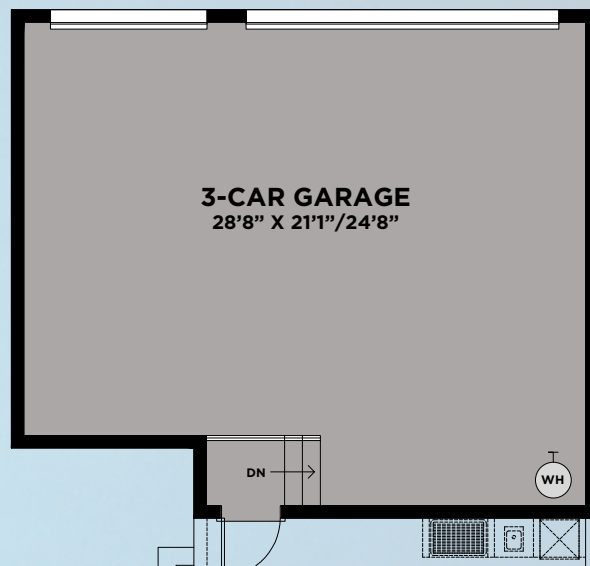
PORTER

3 BEDROOMS, DEN, LOFT, 3.5 BATHS, 2-CAR GARAGE



PORTER

| | |
|-------------------|-------|
| First Floor | 1,952 |
| Second Floor | 948 |
| Total A/C Sq. Ft. | 2,900 |
| 2-Car Garage | 657 |
| Covered Entry | 196 |
| Covered Lanai | 364 |
| Covered Deck | 196 |
| Total Sq. Ft. | 4,313 |

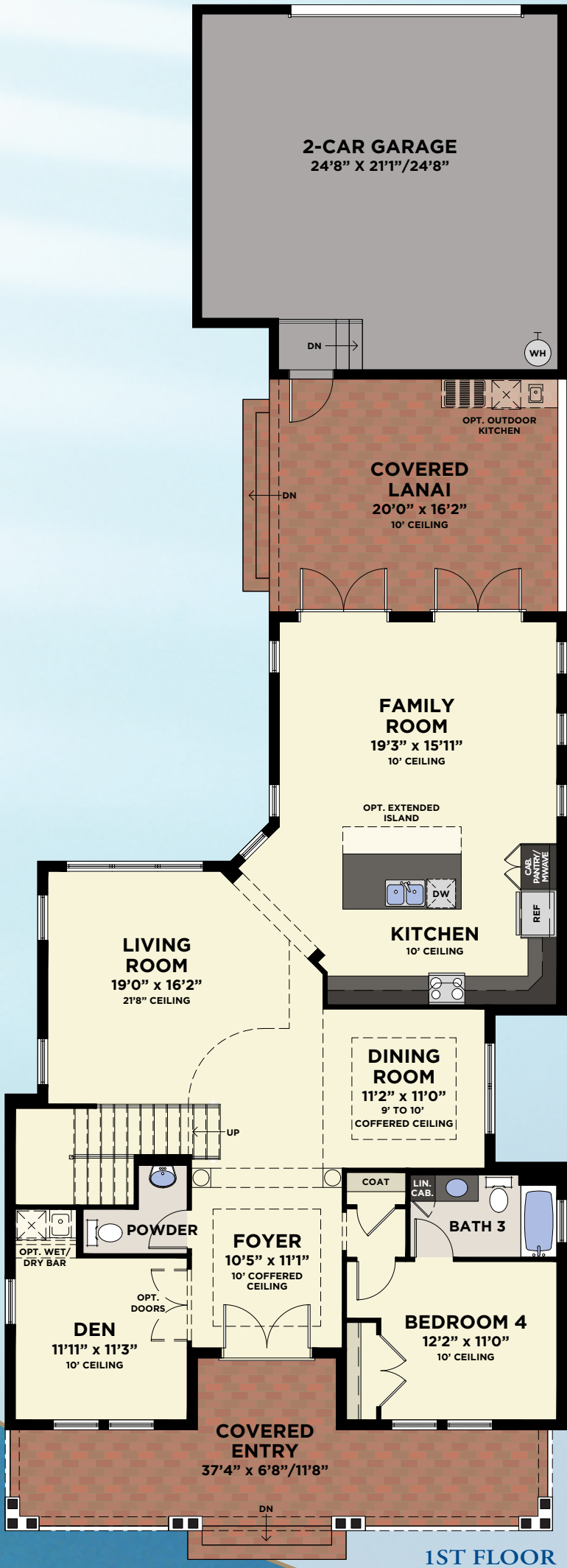


AVAILABLE 3-CAR GARAGE
(747 SQ. FT.)

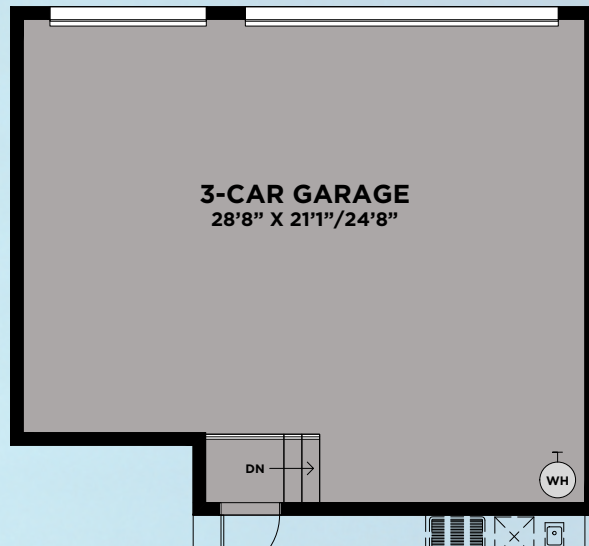


SALVEO COLLECTION
MANSFIELD

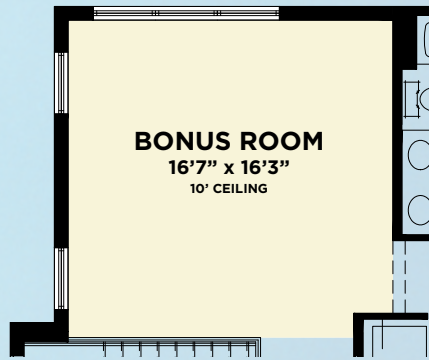
4 BEDROOMS, DEN, 3.5 BATHS, 2-CAR GARAGE



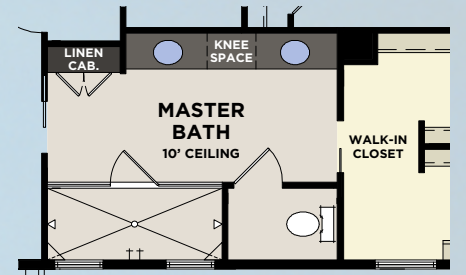
1ST FLOOR



AVAILABLE 3-CAR GARAGE
(747 SQ. FT.)



AVAILABLE BONUS ROOM
(266 SQ. FT.)



AVAILABLE ALTERNATE
MASTER BATH



AVAILABLE BEDROOM #5
(266 SQ. FT.)



2ND FLOOR

MANSFIELD

| | |
|-------------------|-------|
| First Floor | 1,766 |
| Second Floor | 1,162 |
| Total A/C Sq. Ft. | 2,928 |
| 2-Car Garage | 657 |
| Covered Entry | 301 |
| Covered Lanais | 334 |
| Covered Deck | 90 |
| Total Sq. Ft. | 4,310 |



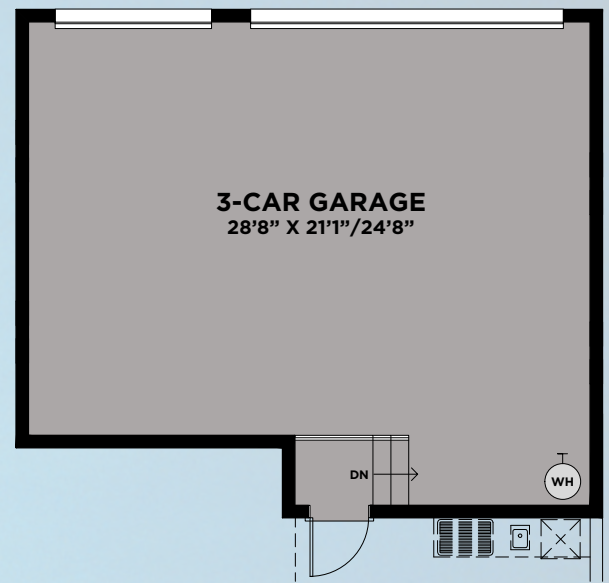
SALVEO COLLECTION
HOPKINS

4 BEDROOMS, DEN, LOFT, 4.5 BATHS, 2-CAR GARAGE

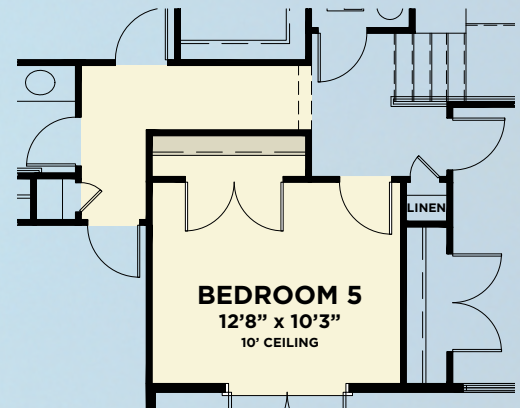


HOPKINS

| | |
|-------------------|-------|
| First Floor | 2,044 |
| Second Floor | 1,115 |
| Total A/C Sq. Ft. | 3,159 |
| 2-Car Garage | 642 |
| Covered Entry | 214 |
| Covered Lanai | 283 |
| Covered Deck | 214 |
| Total Sq. Ft. | 4,512 |

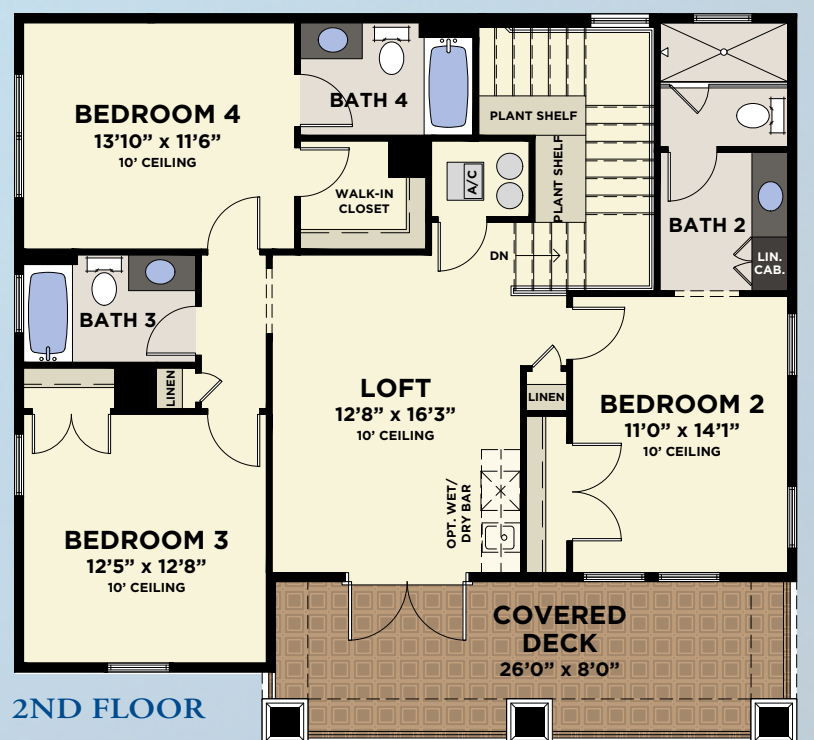
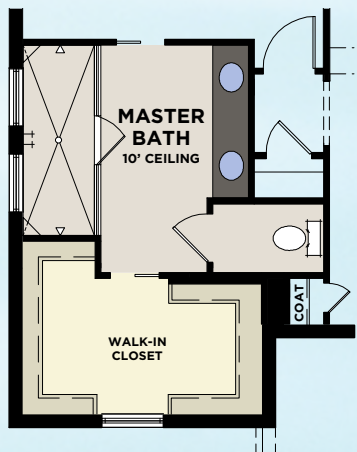


AVAILABLE 3-CAR GARAGE
(731 SQ. FT.)



AVAILABLE BEDROOM #5

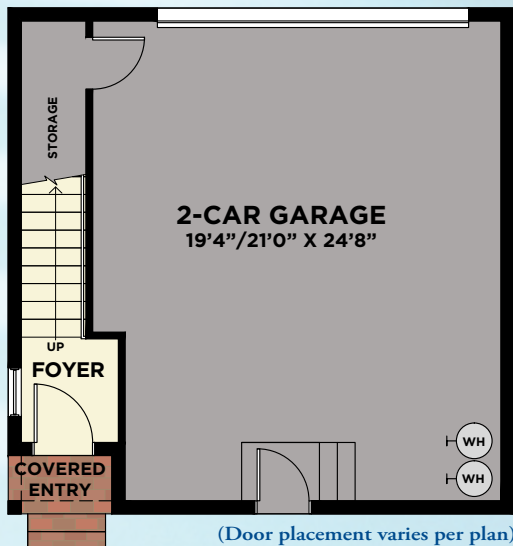
AVAILABLE ALTERNATE
MASTER BATH



AVAILABLE SINGLE-FAMILY 2ND FLOOR RETREAT

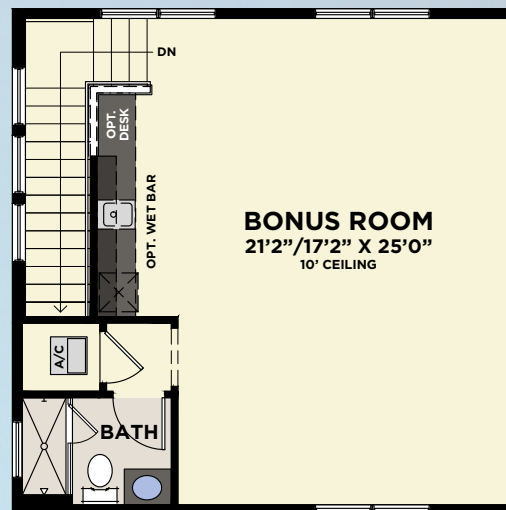
2-CAR GARAGE (COURTYARD ENTRY)

WITH SECOND FLOOR BONUS ROOM OR SUITE

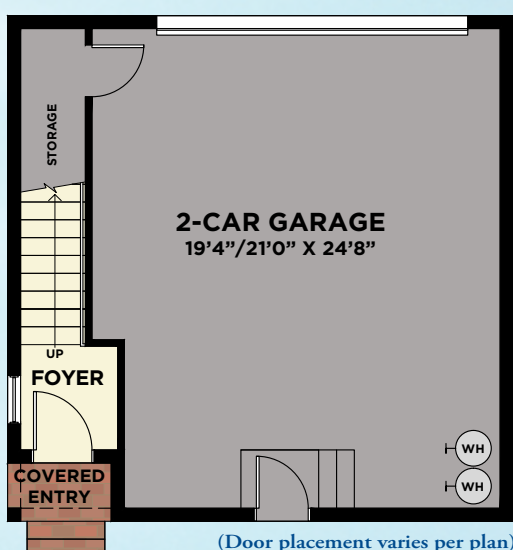


(Door placement varies per plan)

LOWER FLOOR

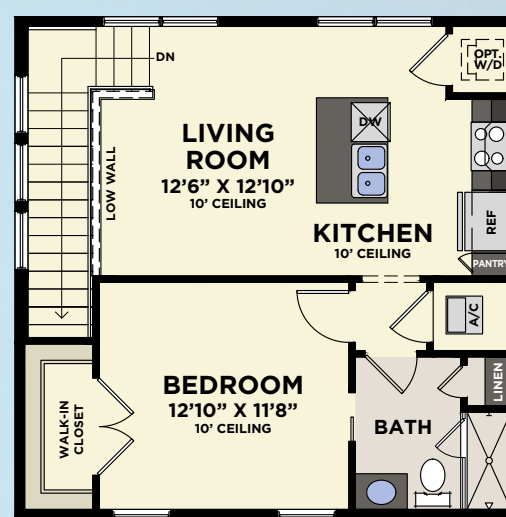


SECOND FLOOR
W/BONUS ROOM



(Door placement varies per plan)

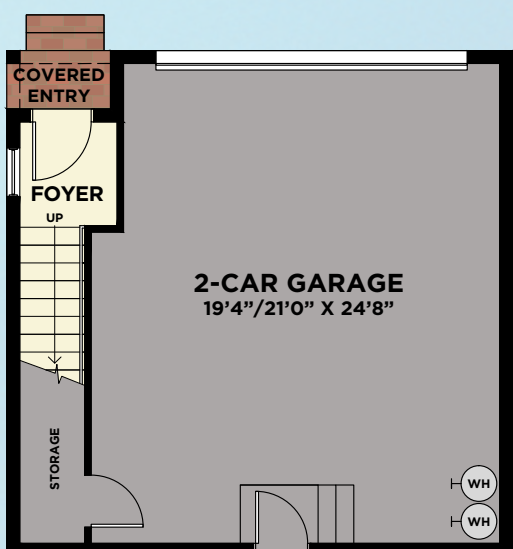
LOWER FLOOR



SECOND FLOOR
W/SUITE

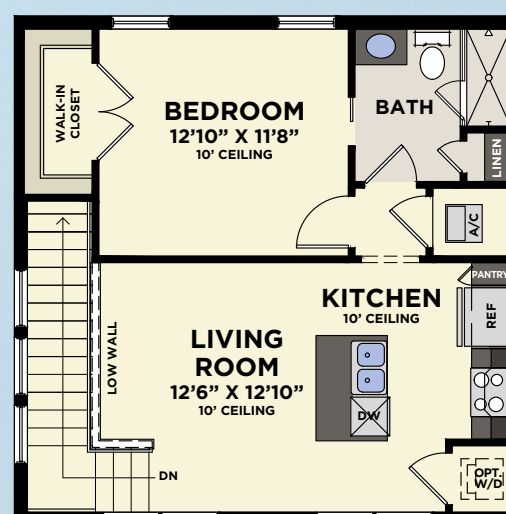
2-CAR GARAGE (DRIVEWAY ENTRY)

WITH SECOND FLOOR SUITE



(Door placement varies per plan)

LOWER FLOOR



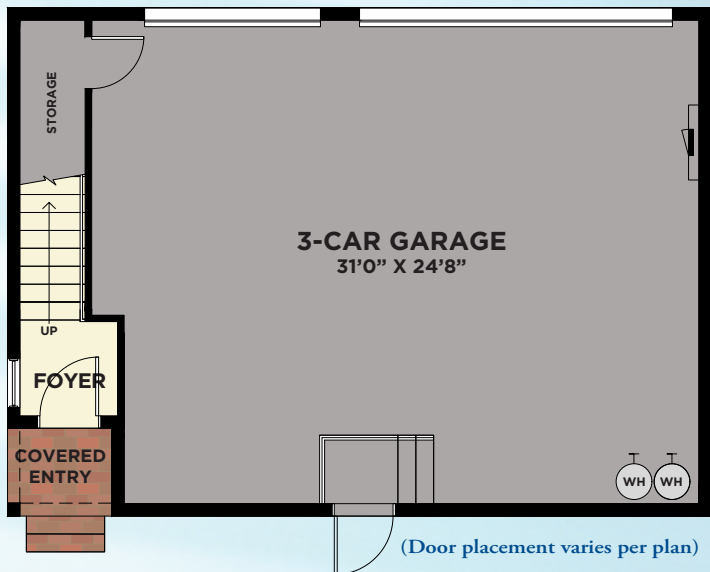
SECOND FLOOR
W/SUITE

| | |
|----------------------|--------------|
| Total A/C Sq. Ft. | 720 |
| 2-Car Garage | 548 |
| Storage | 68 |
| Covered Entry | 16 |
| Total Sq. Ft. | 1,352 |

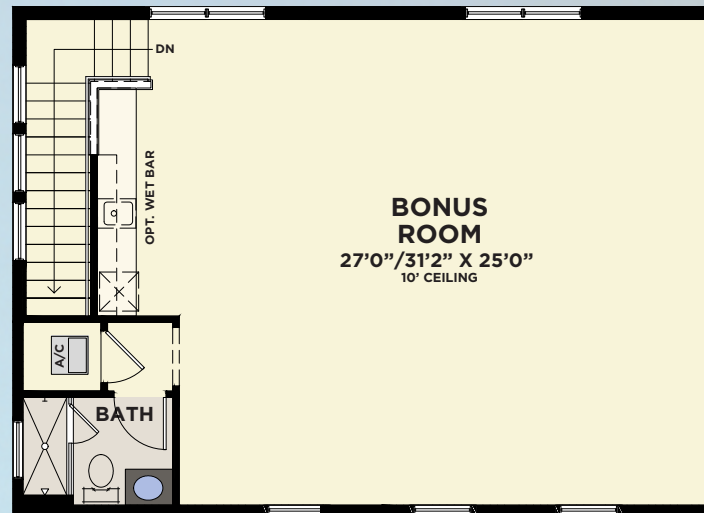
AVAILABLE SINGLE-FAMILY 2ND FLOOR RETREAT

3-CAR GARAGE (COURTYARD ENTRY)

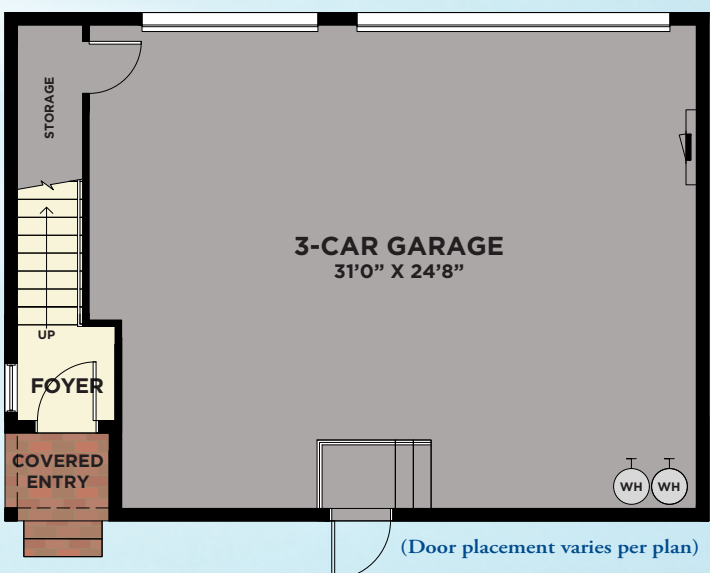
WITH SECOND FLOOR BONUS ROOM OR SUITE



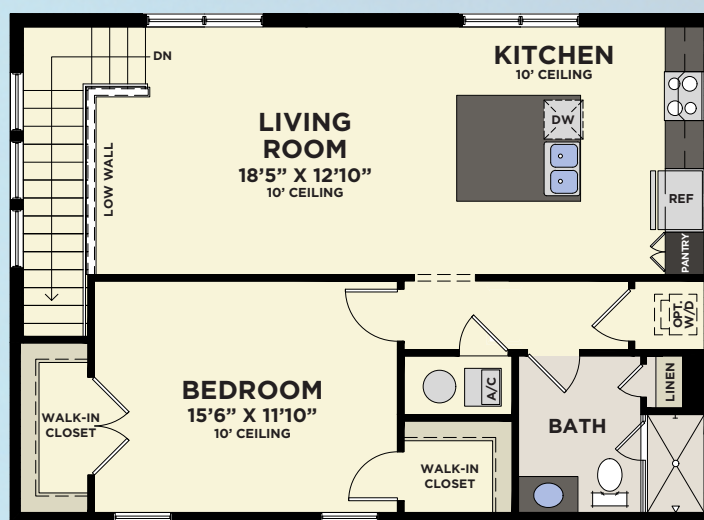
LOWER FLOOR



SECOND FLOOR
W/BONUS ROOM



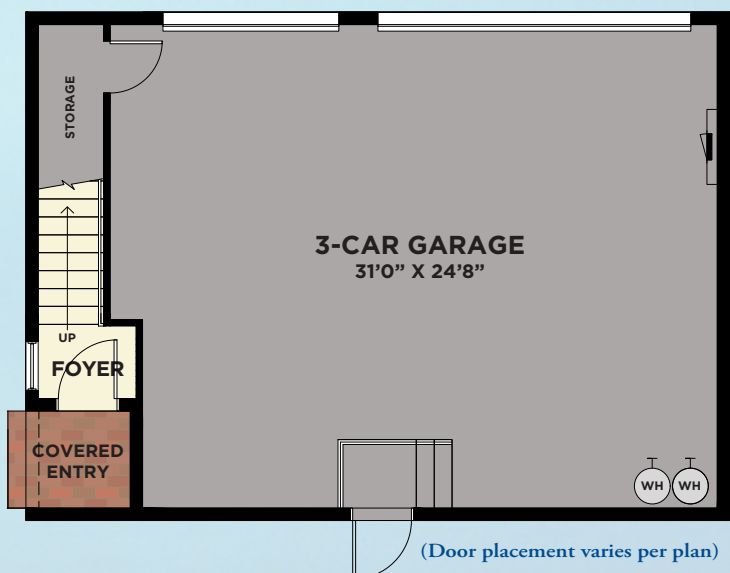
LOWER FLOOR



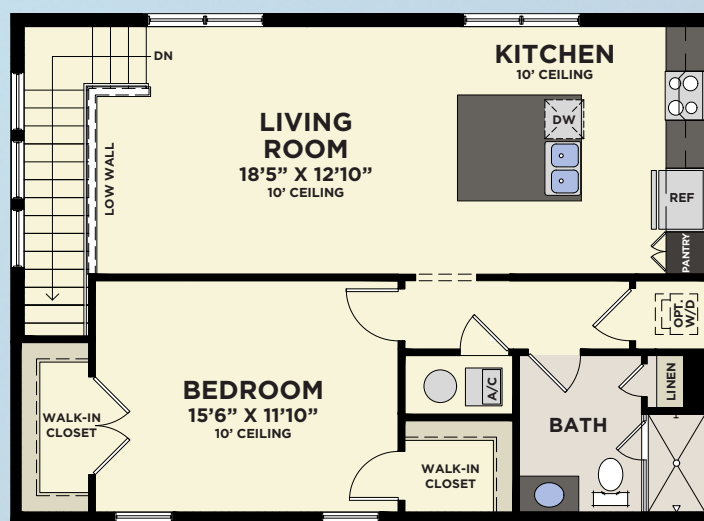
SECOND FLOOR
W/SUITE

3-CAR GARAGE (SIDEYARD ENTRY)

WITH SECOND FLOOR SUITE



LOWER FLOOR



SECOND FLOOR
W/SUITE

| | |
|----------------------|--------------|
| Total A/C Sq. Ft. | 965 |
| 3-Car Garage | 809 |
| Storage | 55 |
| Covered Entry | 19 |
| Total Sq. Ft. | 1,848 |



LAUREATE PARK AT LAKE NONA

mintofla.com

8238 TAVISTOCK LAKES BLVD., ORLANDO, FL 32827
(866) 939-7947



© Minto Communities, LLC 2016. All rights reserved. Content may not be reproduced, copied, altered, distributed, stored or transferred in any form or by any means without express written permission. Artist's renderings, dimensions, specifications, prices and features are approximate and subject to change without notice. Minto, the Minto logo, Laureate Park at Lake Nona and the Laureate Park at Lake Nona logo are trademarks of Minto Communities, LLC, and/or its affiliates. CGC1519880. 9/16

