

TWINEAGLES



SINGLE FAMILY & ESTATE HOME DESIGNS

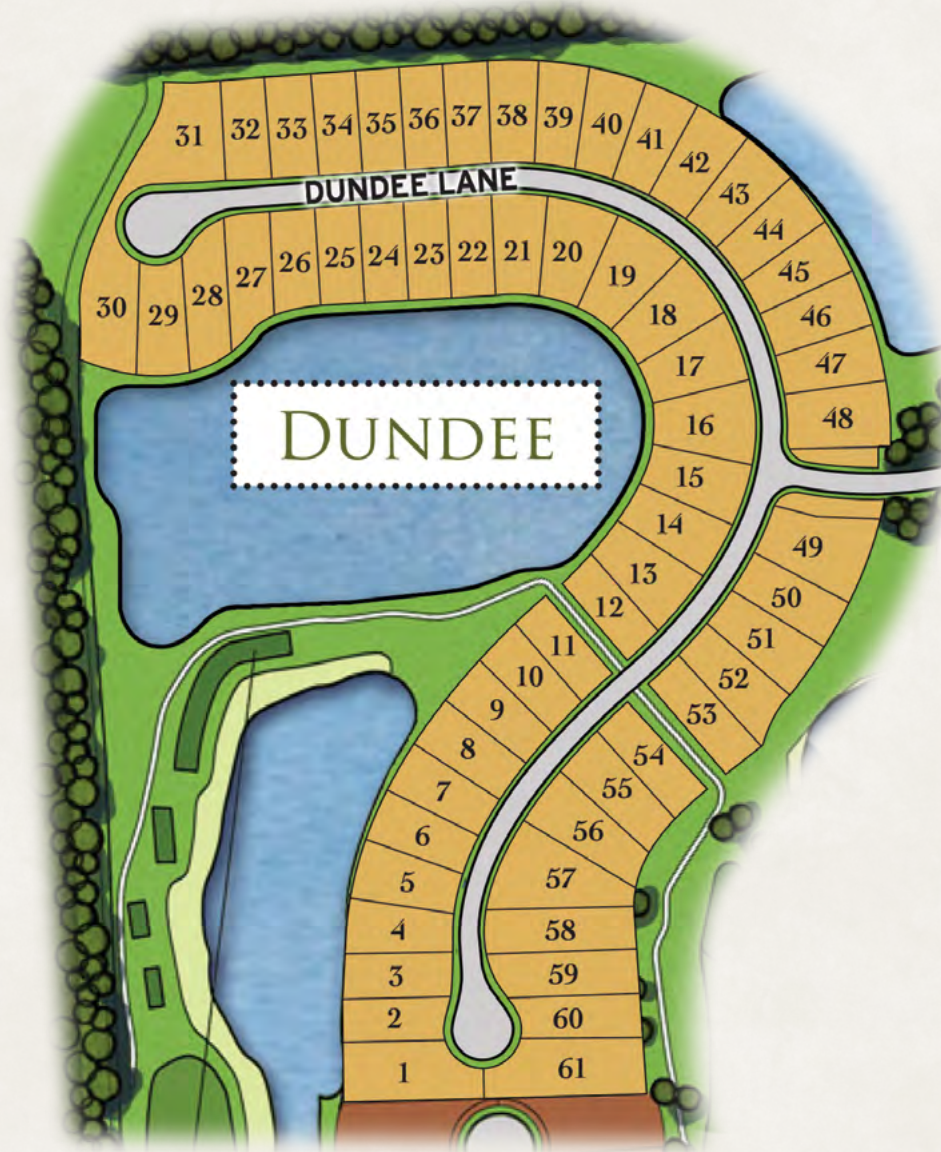
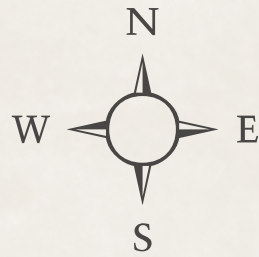


TWINEAGLES

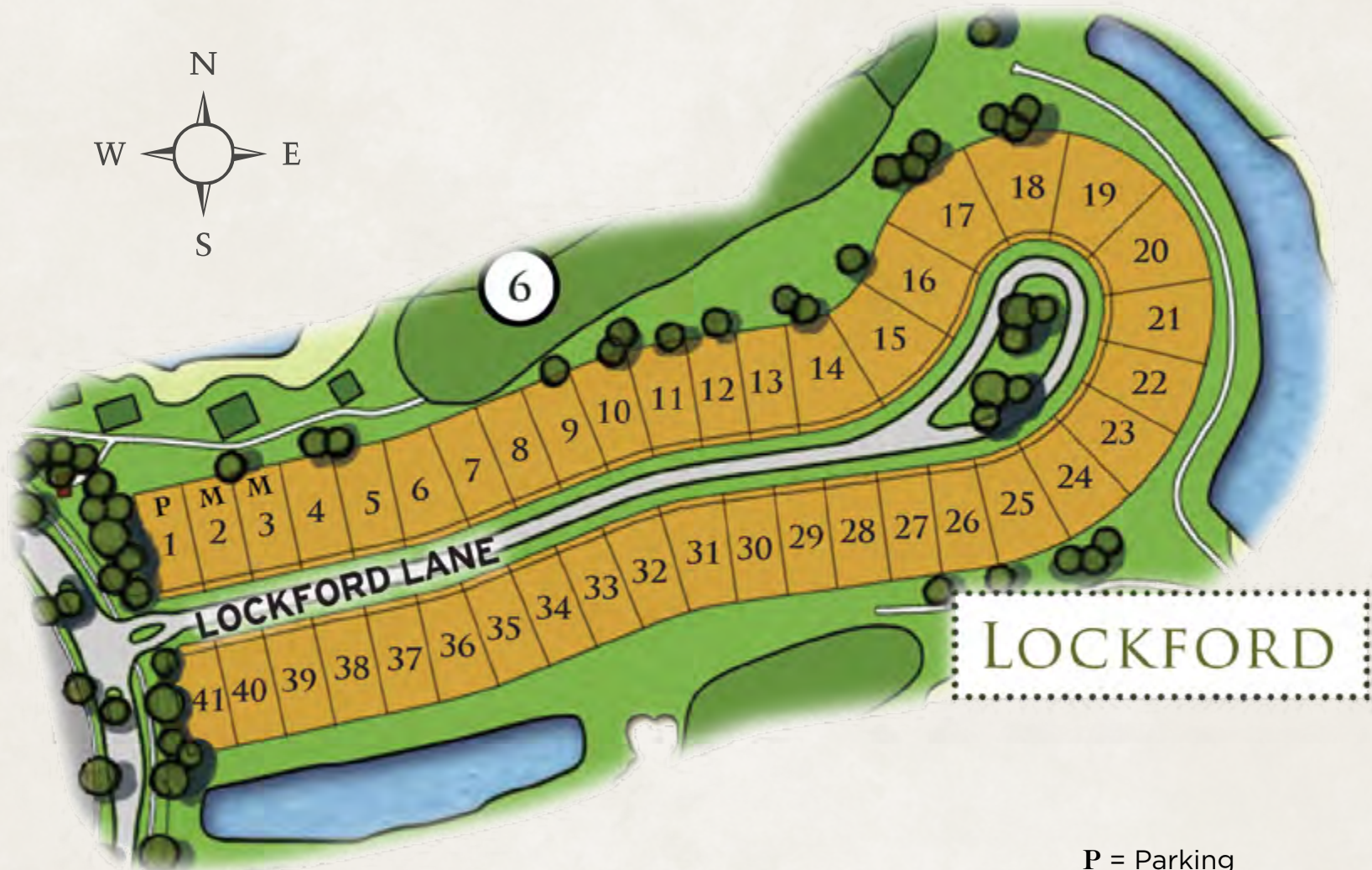
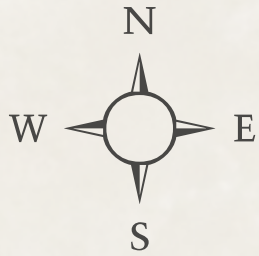


IMMOKALEE ROAD

BALD EAGLE WAY
TWIN EAGLES BLVD



TWINEAGLES



P = Parking
M = Decorated Model

TWINEAGLES

PRESTWICK

2,642 A/C SQ. FT. 🍷 3-CAR GARAGE
2 Bedrooms, Study, 2½ Baths, 3-Car Garage



Total - A/C Sq. Ft.	2,642
2-Car Garage	448
1-Car Garage	263
Covered Entry	45
Covered Screened Lanai	345
Total Sq. Ft.	3,743

Front elevation window configurations change per elevation chosen



ELEVATION A



TWINEAGLES

PRESTWICK

AVAILABLE ELEVATIONS & FLOORPLAN OPTIONS



TWINEAGLES

PRESTWICK GRAND™

2,905 A/C SQ. FT. 🏡 2-CAR GARAGE

2 Bedrooms, Study, Sitting Room, 2½ Baths, 2-Car Garage



Decorated Model

Total - A/C Sq. Ft.	2,905
2-Car Garage	491
Covered Entry	45
Covered Screened Lanai	345
Total Sq. Ft.	3,786

Front elevation window configurations change per elevation chosen



ELEVATION A



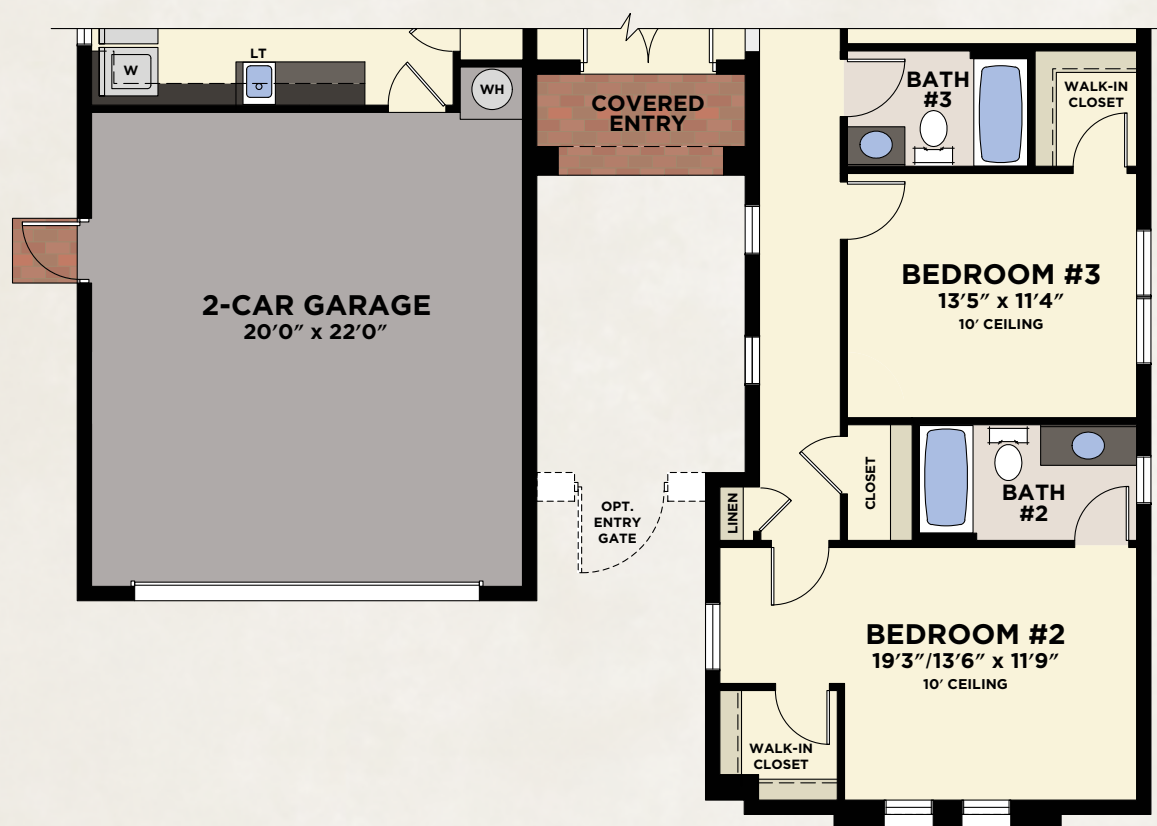
TWINEAGLES

PRESTWICK GRAND™

AVAILABLE ELEVATIONS & FLOORPLAN OPTIONS



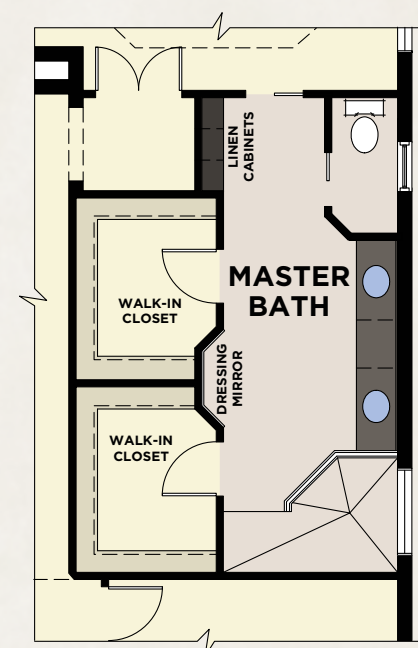
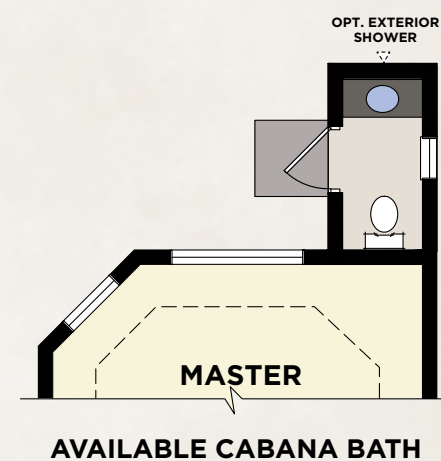
Decorated Model



Front elevation window configurations change per elevation chosen

BEDROOM #3/BATH #3 VARIATION

3 Bedrooms, Study, 3 Baths, 2-Car Garage

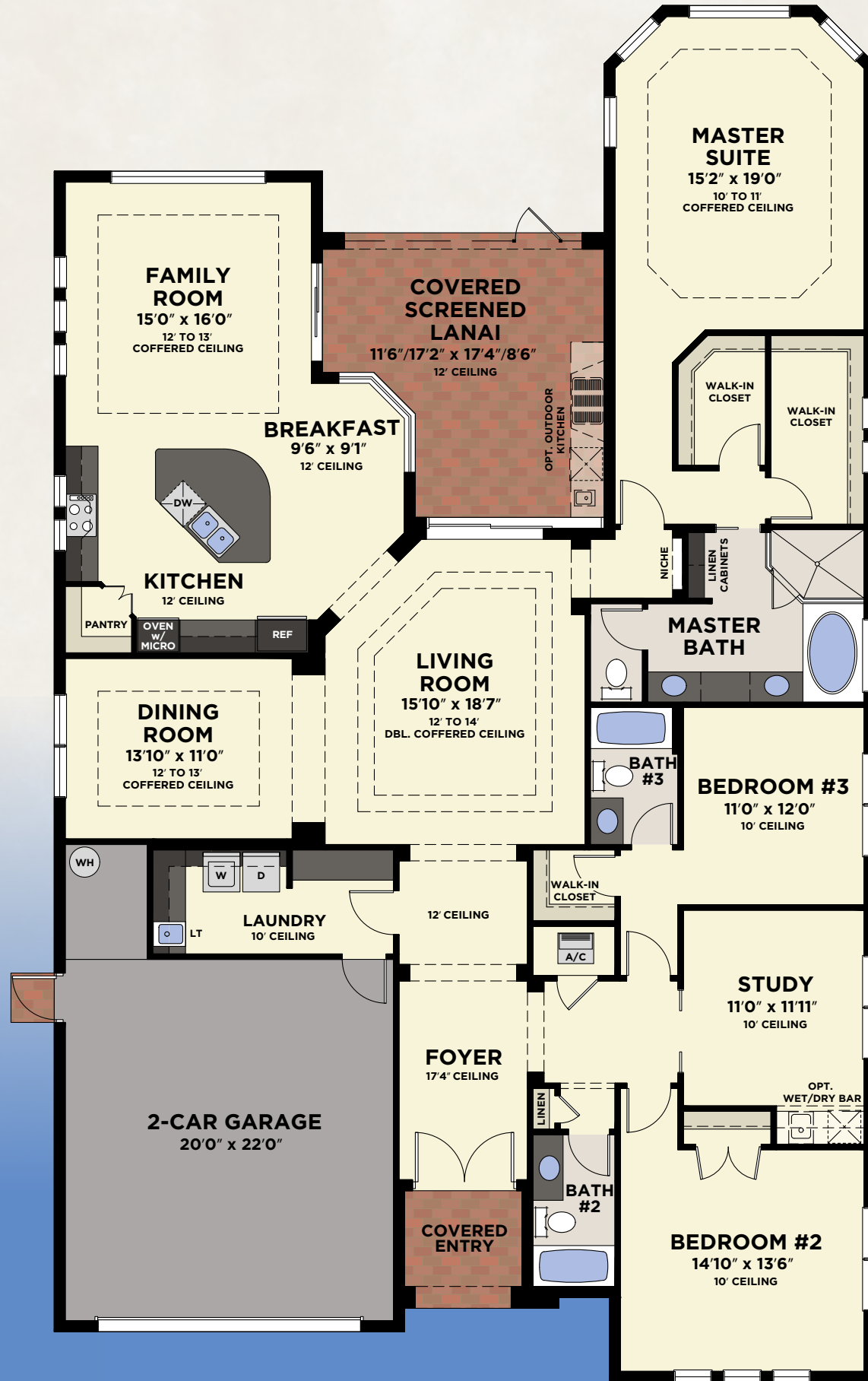


TWINEAGLES

BIRKDALE

2,840 A/C SQ. FT. 🏠 2-CAR GARAGE

3 Bedrooms, Study, 3 Baths, 2-Car Garage



with 2-Car Garage

Total - A/C Sq. Ft.	2,840
2-Car Garage	513
Covered Entry	52
Covered Screened Lanai	245
Total Sq. Ft.	3,650

Front elevation window configurations change per elevation chosen



ELEVATION A (2-CAR)



TWINEAGLES

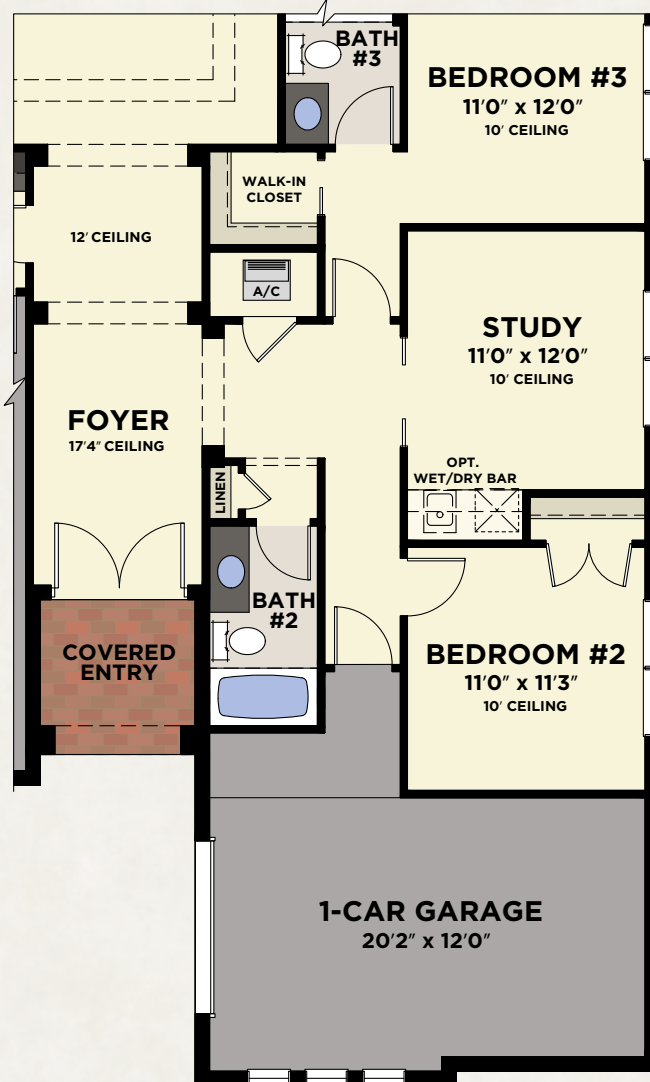
BIRKDALE

AVAILABLE ELEVATIONS & FLOORPLAN OPTIONS



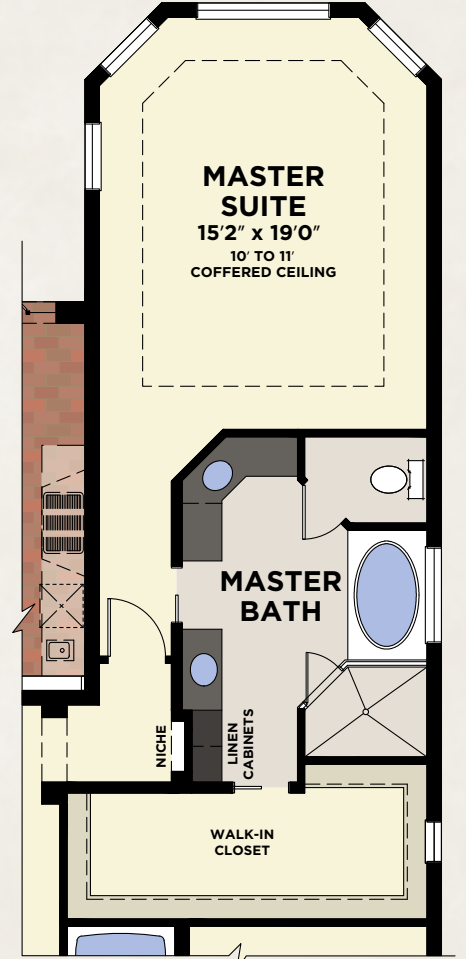
with 3-Car Garage

Total - A/C Sq. Ft.	2,776
2-Car Garage	513
1-Car Garage	318
Covered Entry	51
Covered Screened Lanai	245
Total Sq. Ft.	3,903

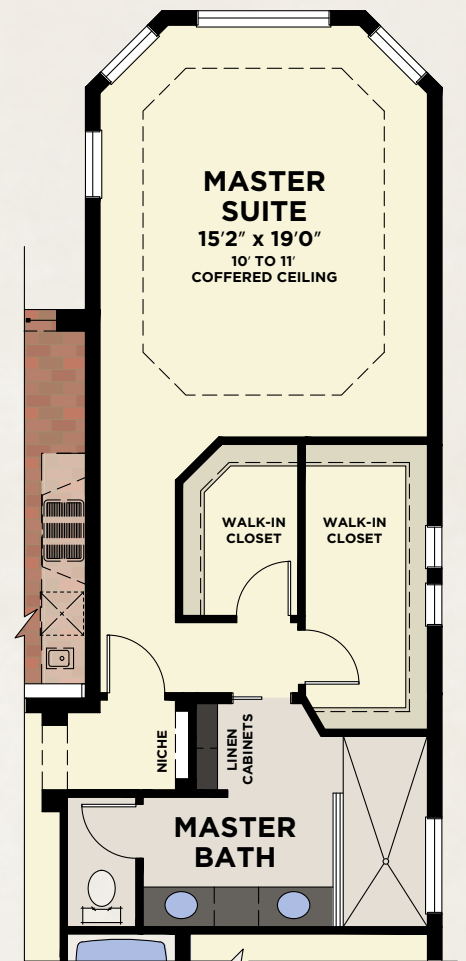


AVAILABLE 3-CAR GARAGE

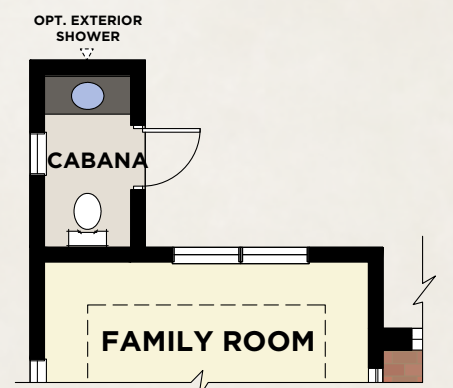
Front elevation window configurations change per elevation chosen



AVAILABLE MASTER BATH



AVAILABLE MASTER BATH w/SHOWER ONLY



AVAILABLE CABANA BATH



INVERNESS

2,899 A/C SQ. FT. 🏠 3-CAR GARAGE

3 Bedrooms, Study, 3 Baths, 3-Car Garage



Front elevation window configurations change per elevation chosen

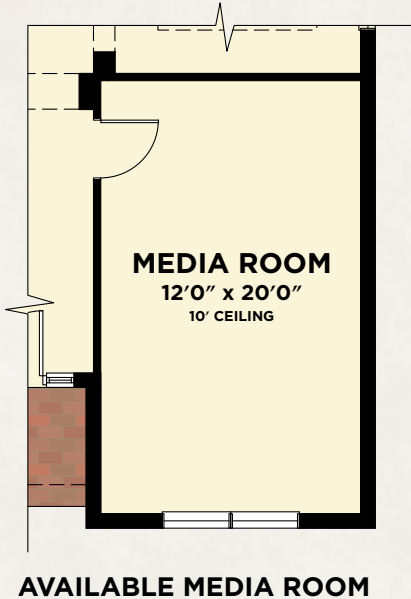
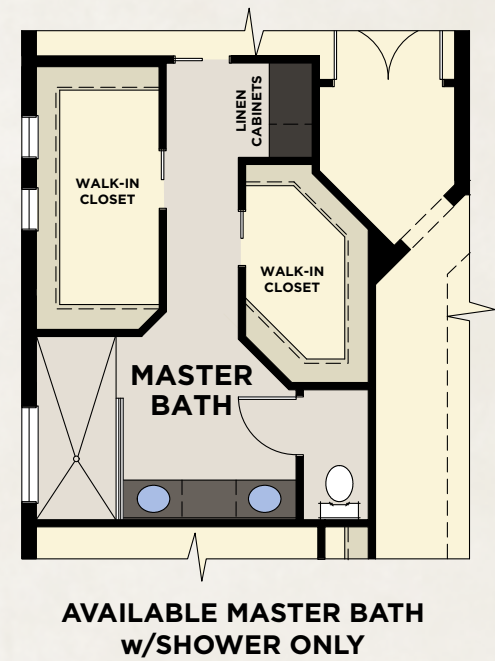
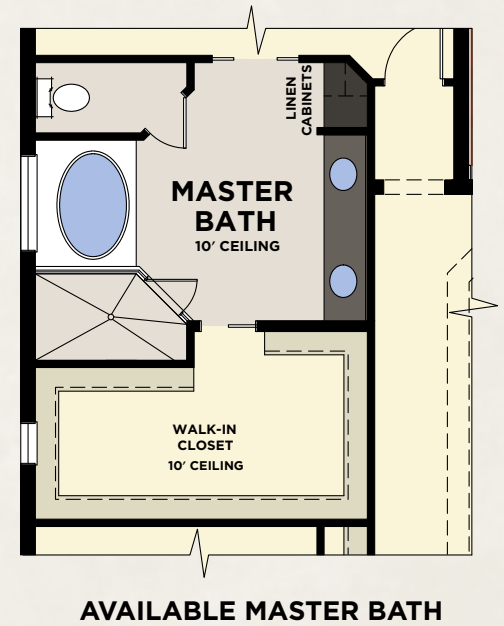
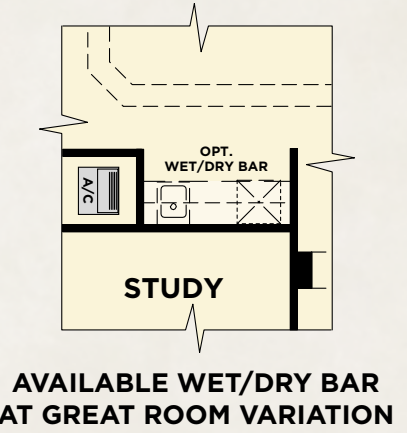
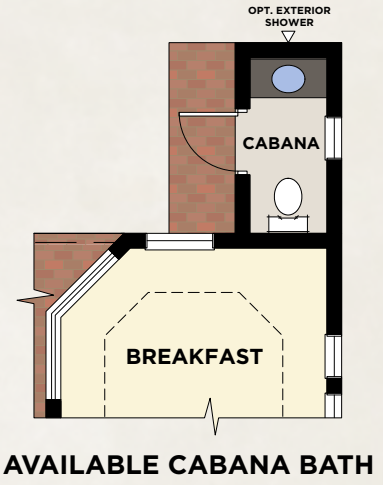


ELEVATION A (3-CAR)



INVERNESS

AVAILABLE ELEVATIONS & FLOORPLAN OPTIONS



*with available Bedroom #4/
Bath #4 or Media Room
and 2-Car Garage*

Total - A/C Sq. Ft.	3,165
2-Car Garage	477
Covered Entry	78
Covered Screened Lanai	179
Total Sq. Ft.	3,899



INVERNESS II

2,733 A/C SQ. FT. 🏠 3-CAR GARAGE

3 Bedrooms, Study, 3 Baths, 3-Car Garage



with 3-Car Garage

Total - A/C Sq. Ft.	2,733
2-Car Garage	477
1-Car Garage	266
Covered Entry	78
Covered Screened Lanai	352
Total Sq. Ft.	3,906

Front elevation window configurations change per elevation chosen

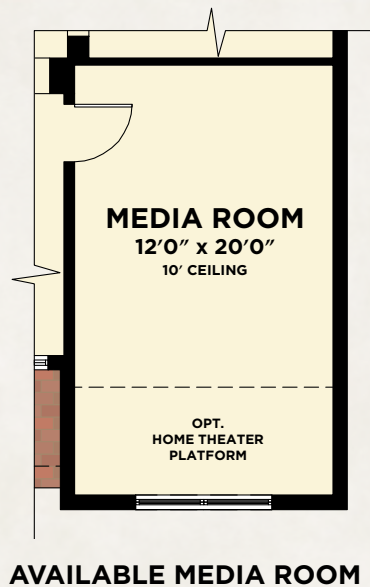
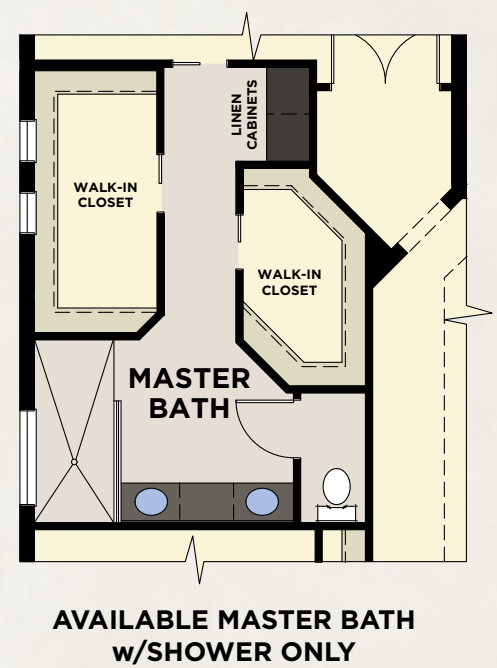
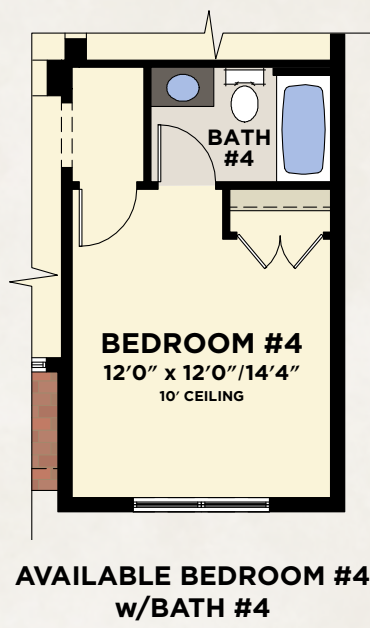
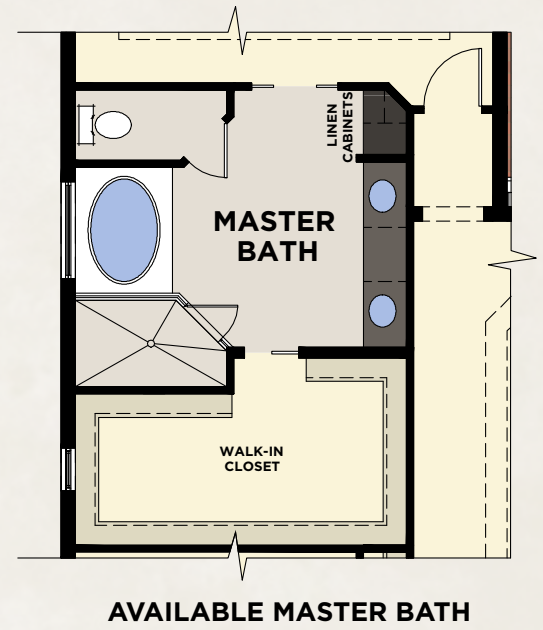
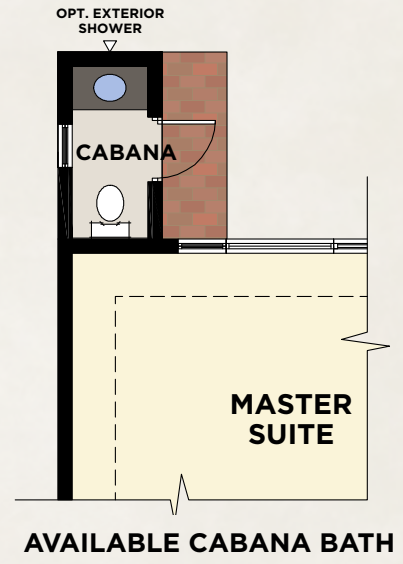


ELEVATION A (3-CAR)



INVERNESS II

AVAILABLE ELEVATIONS & FLOORPLAN OPTIONS



**with available Bedroom #4/
Bath #4 or Media Room
and 2-Car Garage**

Total - A/C Sq. Ft.	2,999
2-Car Garage	477
Covered Entry	78
Covered Screened Lanai	352
Total Sq. Ft.	3,906



ST. ANDREWS

2,910 A/C SQ. FT. 🏠 3-CAR GARAGE

3 Bedrooms, Study, 3 Baths, 3-Car Garage



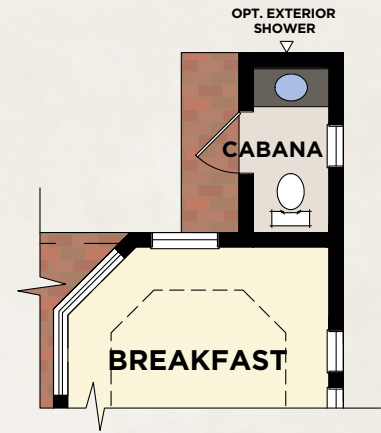
ELEVATION A (3-CAR)



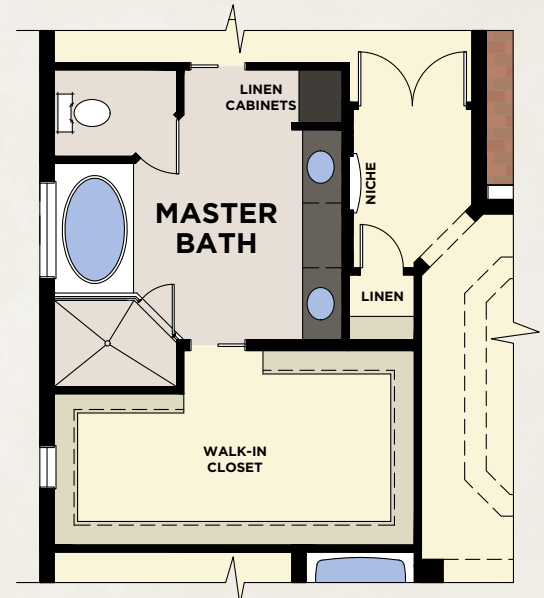
TWINEAGLES

ST. ANDREWS

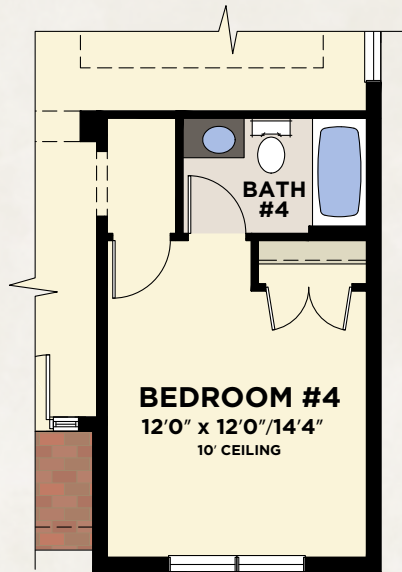
AVAILABLE ELEVATIONS & FLOORPLAN OPTIONS



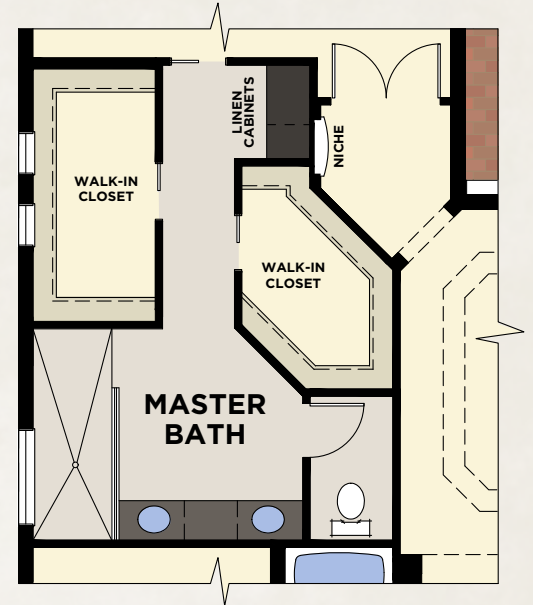
AVAILABLE CABANA BATH



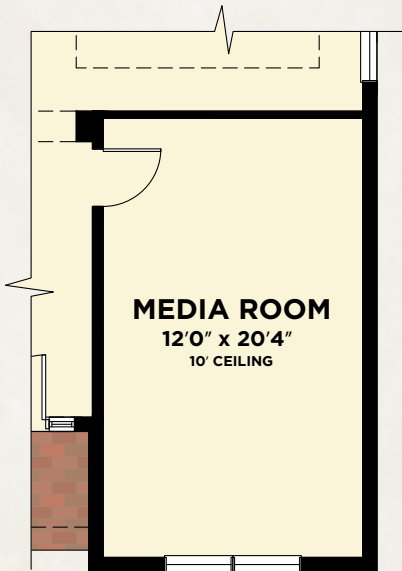
AVAILABLE MASTER BATH



**AVAILABLE BEDROOM #4
w/BATH #4**



**AVAILABLE MASTER BATH
w/SHOWER ONLY**



AVAILABLE MEDIA ROOM

**with available Bedroom #4/
Bath #4 or Media Room
and 2-Car Garage**

Total - A/C Sq. Ft.	3,180
2-Car Garage	461
Covered Entry	78
Covered Screened Lanai	179
Total Sq. Ft.	3,898



TURNBERRY

2,842 A/C SQ. FT. 🏠 3-CAR GARAGE

2 Bedrooms, Study, 2 1/2 Baths, 3-Car Garage



OPT. PRIVACY WALL

with 3-Car Garage

Total - A/C Sq. Ft.	2,842
3-Car Garage	717
Covered Entry	57
Covered Screened Lanai	461
Total Sq. Ft.	4,077

Front elevation window configurations change per elevation chosen



ELEVATION A



TWINEAGLES

TURNBERRY

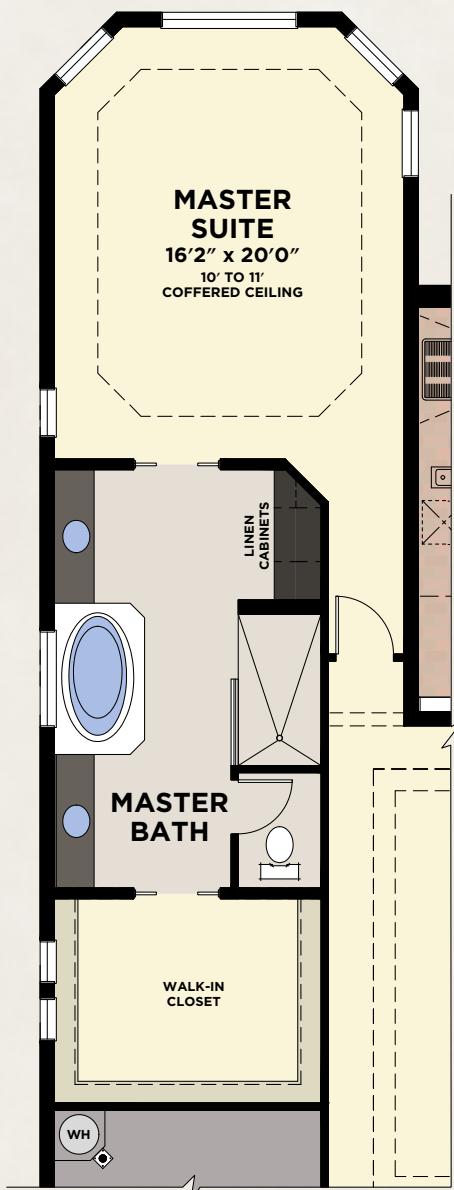
AVAILABLE ELEVATIONS & FLOORPLAN OPTIONS



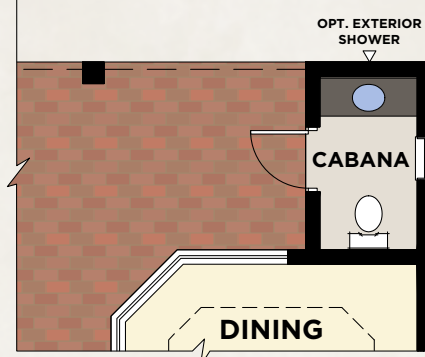
ELEVATION B



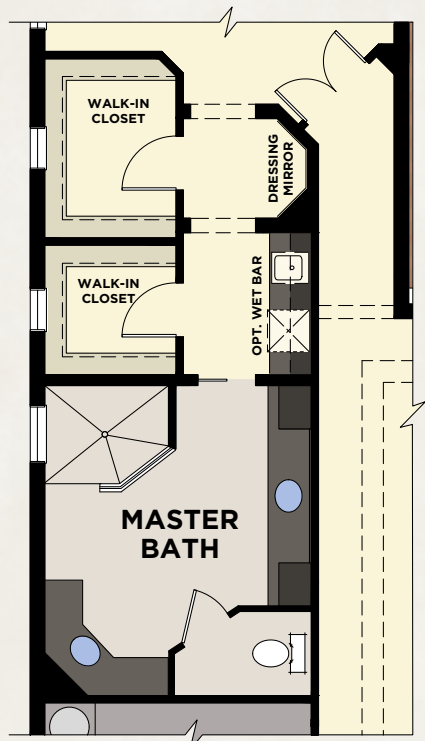
ELEVATION C



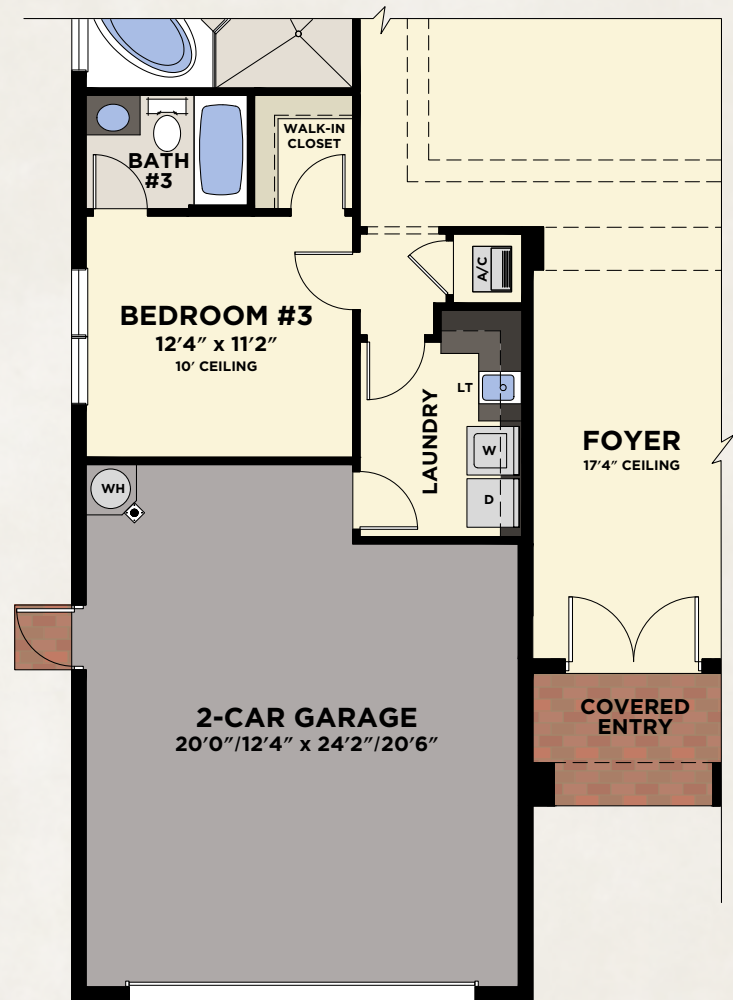
AVAILABLE MASTER BATH



AVAILABLE CABANA BATH



AVAILABLE MASTER BATH w/SHOWER ONLY



AVAILABLE BEDROOM #3 w/BATH #3 AND 2-CAR GARAGE

Front elevation window configurations change per elevation chosen

with available Bedroom #3/ Bath #3 and 2-Car Garage

Total - A/C Sq. Ft.	3,064
2-Car Garage	495
Covered Entry	57
Covered Screened Lanai	461
Total Sq. Ft.	4,077



TWINEAGLES

TURNBERRY GRANDSM

3,811 A/C SQ. FT. SM 3-CAR GARAGE

3 Bedrooms, Study, Bonus Room, 3 Baths, Two Powder Baths, 3-Car Garage



Decorated Model

Front elevation window configurations change per elevation chosen

1ST FLOOR

2ND FLOOR



ELEVATION A



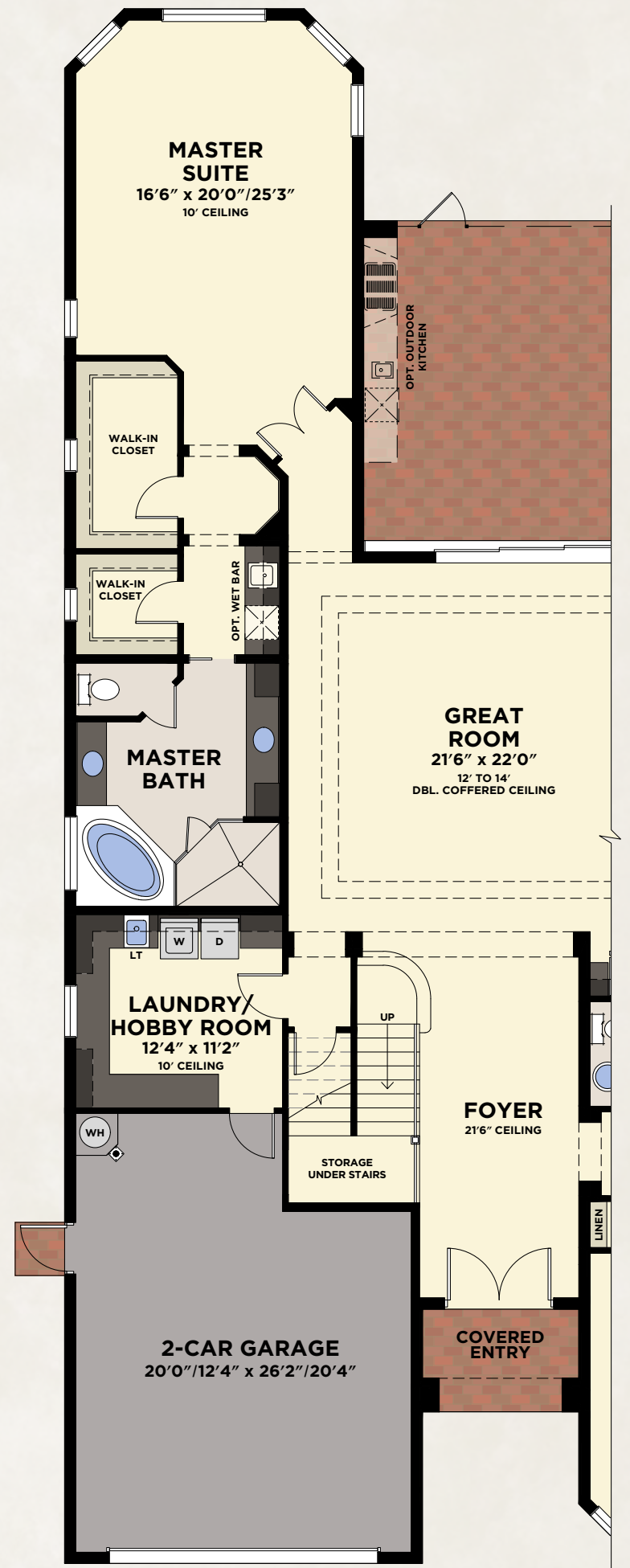
TWINEAGLES

TURNBERRY GRAND™

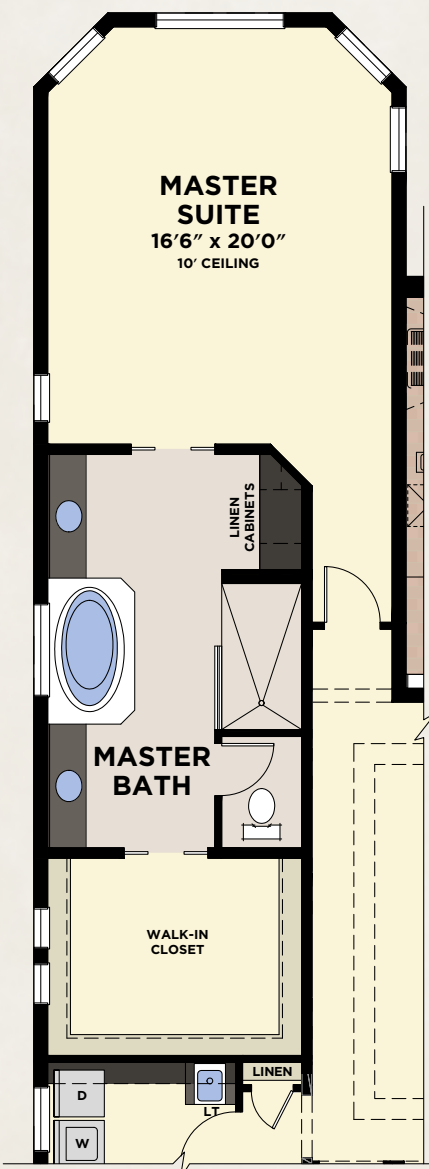
AVAILABLE ELEVATIONS & FLOORPLAN OPTIONS



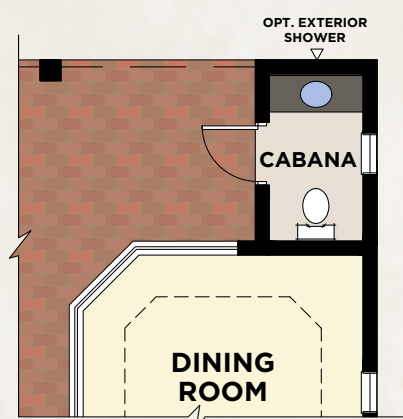
Decorated Model



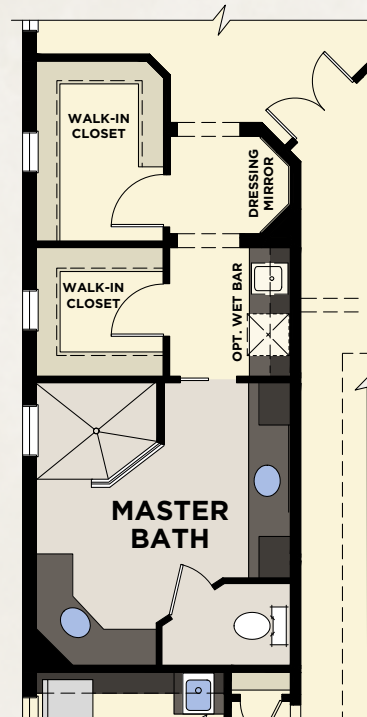
AVAILABLE LAUNDRY/HOBBY ROOM AND 2-CAR GARAGE



AVAILABLE MASTER BATH



AVAILABLE CABANA BATH



AVAILABLE MASTER BATH w/SHOWER ONLY

**with available
Laundry/Hobby Room
and 2-Car Garage**

First Floor Living	3,051
Second Floor Living	889
Total - A/C Sq. Ft.	3,940
2-Car Garage	519
Covered Deck	249
Covered Entry	57
Covered Screened Lanai	453
Total Sq. Ft.	5,218



TWINEAGLES

TWIN EAGLES INCLUDED PREMIUM FEATURES

ENERGY EFFICIENT HOMES - SAVING YOU MORE MONEY PER MONTH

- Insulated sealed duct air conditioning system for improved indoor air quality
- Low volatile organic compound (VOC) **Sherwin-Williams**® paints and **Mohawk**® carpet
- Exterior ventilation of range hood
- In-wall **Taexx**® pest defense system eliminates personal contact with active ingredients
- Energy-efficient double-paned low-emissivity (*Low-E*) windows, sliders and glass doors
- Complete stainless steel **GE**® **Café**, ENERGY STAR® appliance package
- High efficiency 16-SEER **Carrier**® central air conditioning and heating
- Energy-saving compact fluorescent light bulbs
- R-30 insulation on ceilings and R-4.1 on block walls
- Energy-efficient quick-recovery water heater
- Irrigation system with rain sensor
- **Kohler**® water-saving plumbing fixtures
- Water-saving, comfort-height and elongated commodes to reduce water consumption

FOR INCREASED SAFETY AND SECURITY

- Security system with contacts on all operable windows and doors (*excluding overhead garage doors*)
- Impact-rated **PGT**® windows on front elevation and storm panels over glass on sides and rear for improved storm protection and peace of mind
- 2 Smart Home Ready alarm dashboards, one located at the garage entry and a portable dashboard for added convenience.
- Decorative **Schlage**® handle-set, entry dead bolt lock and door viewer
- Private 2-car or 3-car garage (*per plan*) with automatic opener and 2 transmitters
- Smoke and carbon monoxide detectors throughout
- Tempered sliding glass doors

FOR IMPROVED INDOOR COMFORT AND LIVABILITY

- **Schlage**® lever hardware on all interior doors for ease of opening
- Raised height vanities in all master and secondary bathrooms
- **Kohler**® faucets
- **Honeywell**® 7-day programmable thermostat with a digital display for enhanced viewing
- Rocker-style electrical switches for ease of operation

FOR ENHANCED DESIGN

- 5 1/4" crown molding throughout common living areas, (*including tray ceilings in common living areas*)
- 5 1/4" sculpted colonial wood baseboards and 2 1/4" colonial wood door casings
- Screened lanais
- Over-sized walk-in closets in master bedrooms
- His and hers master bathroom raised height vanities

FOR GREATER CONVENIENCE

- 10-year structural warranty
- 1-year **GE**® appliance warranty
- 10-year limited warranty on the air conditioning and heating system parts
- Insulated fiberglass front entry door
- **Sentricon**® termite elimination system with 1-year monitoring

FOR HIGHER QUALITY CONSTRUCTION

- Design & construction in accordance with rigorous wind resistive requirements of Florida Building Code
- **Mapeguard**™ 2 crack suppressant membrane installed under all tile areas on first floor for improved warranty and protection
- Steel reinforced monolithic concrete foundation system with reinforced concrete block exterior walls
- Paver drives, walkways, entries and covered lanais
- **Sherwin-Williams**® painted garage floors
- **Sherwin-Williams**®, **Loxon**® 2-coat exterior paint system for long lasting color retention and climate protection
- Distinctive **Hanson**® Regal cement roof tile
- PEX piping plumbing system for superior performance
- **DensShield**® tile backer at all tub and shower areas for added protection

EXCEPTIONAL INTERIOR FINISHES

Kitchen

- 3 cm granite counter tops with 4" backsplash
- Designer selected full-overlay wood recessed-panel doors and drawers on frameless full-access cabinets with 42" uppers and accented raised cabinet bump-up & out, as well as wood finished canopy hood above cook top
- Crown molding on all kitchen cabinet uppers
- Double compartment under-mount (*50/50, 60/40 or 70/30*) stainless steel sink
- **Kohler**® faucet with integrated pull-out sprayer
- 1/2 hp **Badger**® garbage disposal
- **GE**® **Café** stainless steel ENERGY STAR® refrigerator with in-door ice and water
- **GE**® **Café** stainless steel ENERGY STAR® sound insulated automatic dishwasher
- **GE**® **Café** stainless steel 30" cook top
- **GE**® **Café** stainless steel 30" built-in single wall oven
- **GE**® **Café** stainless steel microwave built-in
- Recessed lighting with energy-saving compact fluorescent light bulbs

Master Bathroom

- 3 cm granite counter tops with 4" backsplash
- Raised height full-overlay wood recessed-panel doors and drawers on frameless full-access cabinet vanities with his and hers **Kohler**® under-mount bathroom sinks
- 3/8" Thickened Glass Frameless and Seamless Shower Enclosures with recessed soap and shampoo niche
- Full mirror over vanity with decorator selected **Progress Lighting**® wall light above
- **Royal** drop-in tub
- Recessed lighting with energy-saving compact fluorescent light bulbs
- Vapor-proof recessed light with energy-saving compact fluorescent light bulb in shower
- **Mohawk**® 18"x18" ceramic tile floors, 8"x12" ceramic tile on shower walls and 6"x6" ceramic tile on shower floors
- **Kohler**® fixtures with 8" widespread lavatory and tub faucets
- Towel and bath accessories



TWINEAGLES

TWIN EAGLES INCLUDED PREMIUM FEATURES

Secondary and Powder Bathrooms

- 3 cm granite counter tops with 4" backsplash
- Raised height full-overlay wood recessed-panel doors and drawers on frameless full-access cabinet vanities with under-mount sinks (*all secondary bathrooms*)
- **Kohler**® Pedestal sinks in powder room (*per plan*)
- Full width mirror over vanity with decorator selected **Progress Lighting**® wall light above
- Recessed lighting with energy-saving compact fluorescent light bulbs
- Vapor-proof recessed light with energy-saving compact fluorescent light bulb over tub/shower
- **Mohawk**® 18"x18" ceramic tile floors, 8"x12" ceramic tile on tub/shower walls with a recessed soap niche in all secondary baths
- **Kohler**® fixtures with lever handles for ease of use
- Towel and bath accessories

Laundry

- **GE**®, ENERGY STAR® super capacity washer and dryer
- 3 cm granite counter tops with 4" backsplash (*per plan*)
- Designer selected recessed panel wood cabinet bases and uppers (*per plan*)
- Base cabinet laundry tub

WITHIN YOUR HOME

- **Mohawk**® stain-resistant, low VOC carpeting with high performance carpet cushion in all bedrooms, bedroom sitting areas and den
- Energy efficient quick-recovery water heater (*size per plan*)
- Recessed lighting with energy-saving compact fluorescent light bulbs in entry, foyer (*per plan*), kitchen, hallways, covered lanai, and all bathrooms
- 18" **Mohawk**® ceramic tile in foyer, kitchen, great room, living room, family room, dining, café, hallway, a/c closet, powder and laundry room
- Knockdown textured finish on ceilings and light orange peel finish on interior walls

- 8' interior doors
- High speed structured wiring network – certified CAT-5E data lines and RG-6 quad shield coaxial cable
- Telephone pre-wire in kitchen, den and all bedrooms
- Cable television pre-wire in great room, living room, family room, den, and all bedrooms
- Ceiling fan pre-wire in great room, living room, family room, den, covered lanai, and all bedrooms
- Decorative **Progress Lighting**® fixtures in all bathrooms, dining room, foyer and breakfast nook
- Electric entry door chime
- Corian window sills throughout with travertine marble sills in all baths
- Wood-ventilated closet shelving
- Air conditioned bathrooms and walk-in closets

OUTSIDE OF YOUR HOME

- Professionally designed landscape package with fully sodded lot
- Irrigation system with rain sensor
- **Sentricon**® termite elimination system with 1-year monitoring
- **Progress Lighting**® coach lights
- Hose bibs at front and rear for your convenience
- Gutters at all front entries (*per plan*)
- Paver drives, walkways, entries and covered lanais

MINTO ONLY USES QUALITY BRANDS



**SHERWIN
WILLIAMS**

PGT

MOHAWK

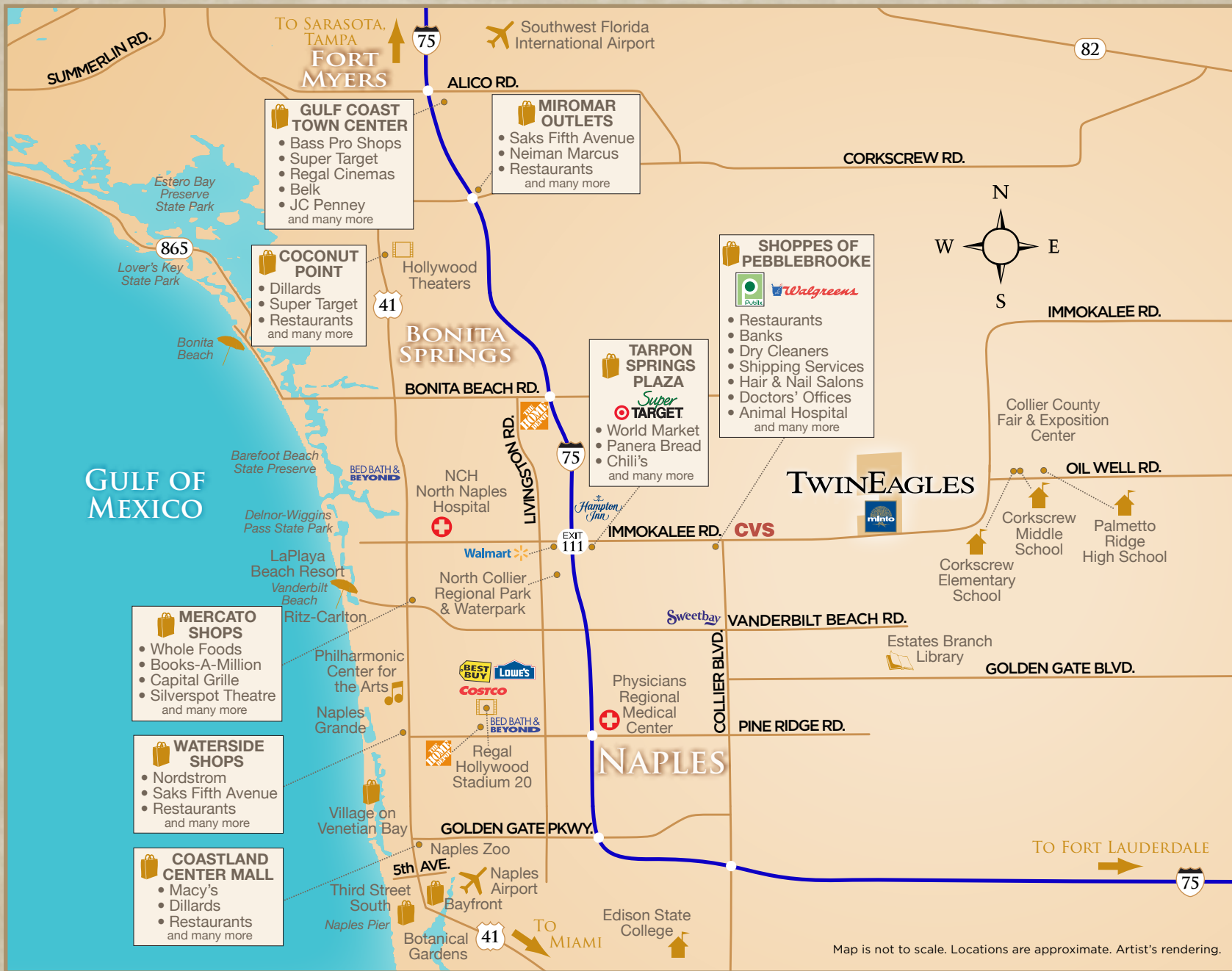


GE imagination at work

KOHLER



TWINEAGLES



Map is not to scale. Locations are approximate. Artist's rendering.

TWINEAGLES

mintofla.com

12405 LOCKFORD LANE, NAPLES, FLORIDA 34120 • (888) 525-1107



© Minto Communities, LLC 2017. All rights reserved. Content may not be reproduced, copied, altered, distributed, stored or transferred in any form or by any means without express written permission. Artist's renderings, dimensions, specifications, prices and features are approximate and subject to change without notice. Minto, and the Minto logo are trademarks of Minto Communities, LLC and/or its affiliates. CGC1519880 5/17

