

RENAISSANCE

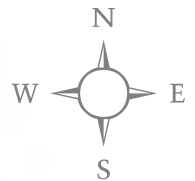


single family & estate home designs



RENAISSANCE

SIENA



FLORIDA'S NEW
SunCityCenter[®]
TAMPA SARASOTA
A 55 and Better Community



RENAISSANCE

SIENA II



FLORIDA'S NEW
SunCityCenter[®]
TAMPA SARASOTA
A 55 and Better Community

RENAISSANCE SIENA

Single Family Homes
1,683 - 2,557 sq. ft.



Capistrano



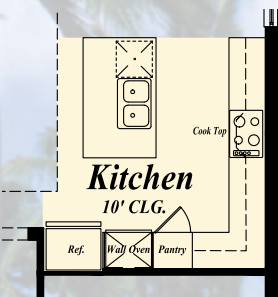
Elevation A



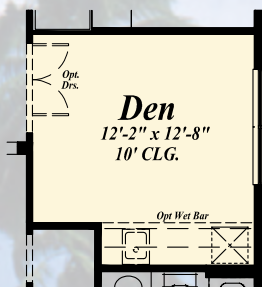
Elevation B

2 Bedrooms
 2 Baths
 Great Room
 Den/Opt. Bedroom 3
 Covered Screened Lanai

2-Car Garage
 1,683 a/c sq. ft.
 2,432 total sq. ft.



AVAILABLE COOK TOP & WALL OVEN



AVAILABLE WET BAR W/DEN



AVAILABLE BEDROOM #3



Laguna



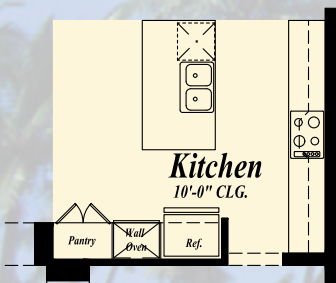
Elevation A



Elevation B

- 2 Bedrooms
- 2 Baths
- Great Room
- Dining
- Den/Opt. Bedroom 3
- Covered Screened Lanai

2-Car Garage
1,919 a/c sq. ft.
2,631 total sq. ft.

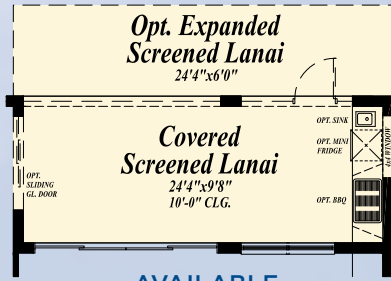


AVAILABLE COOK TOP & WALL OVEN

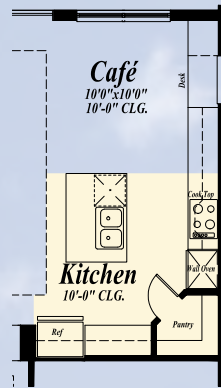
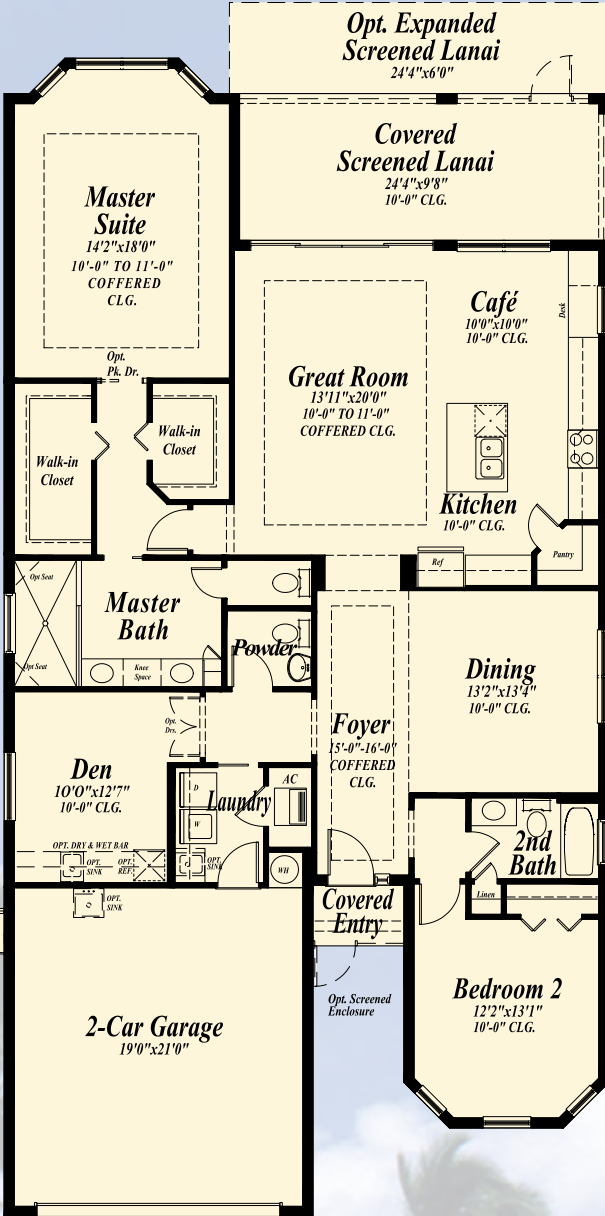
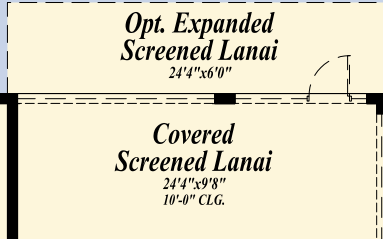


AVAILABLE BEDROOM #3

Malibu



AVAILABLE
OUTDOOR KITCHEN



AVAILABLE
COOK TOP &
WALL OVEN



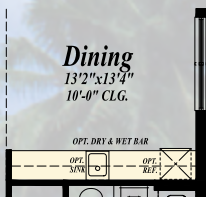
Elevation A



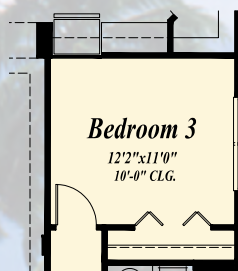
Elevation B

2 Bedrooms
2 1/2 Baths
Great Room
Den
Dining/Opt. Bedroom 3
Covered Screened Lanai

2-Car Garage
2,070 a/c sq. ft.
2,792 total sq. ft.



AVAILABLE
WET BAR



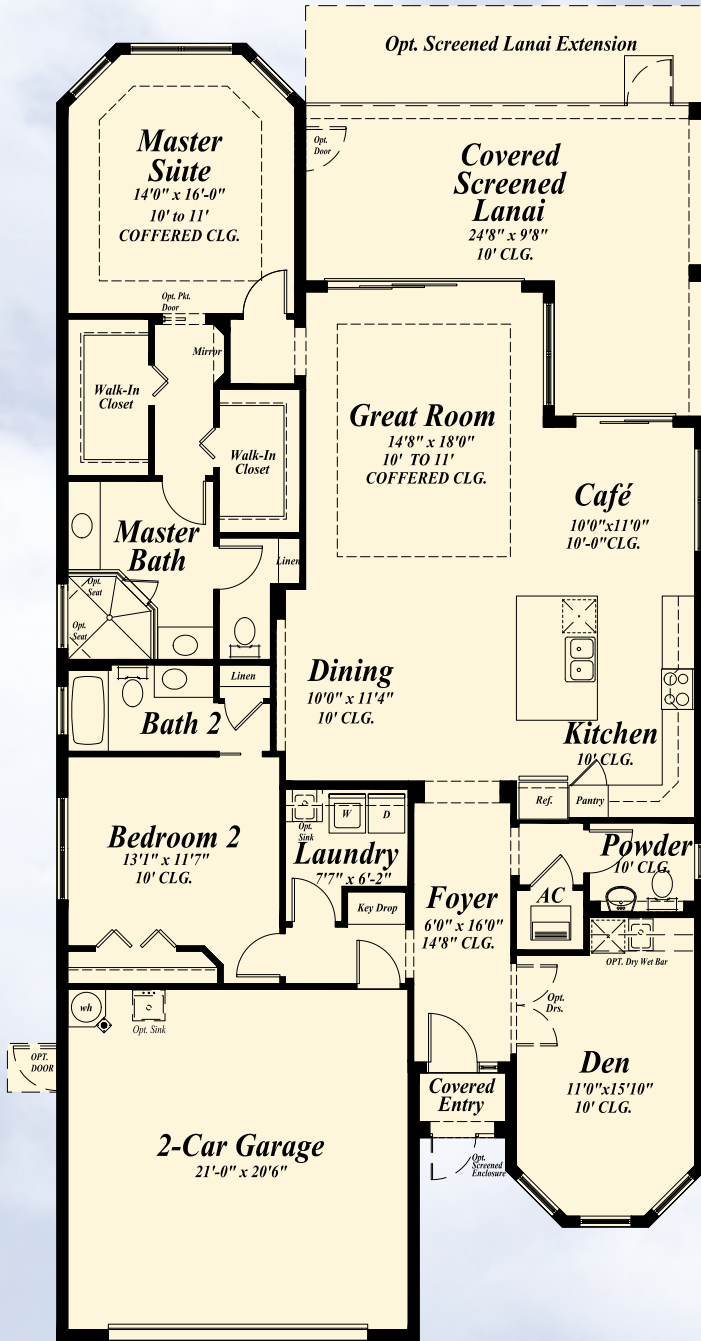
AVAILABLE
BEDROOM #3



AVAILABLE
MASTER BATH
TUB & SHOWER



Palisade



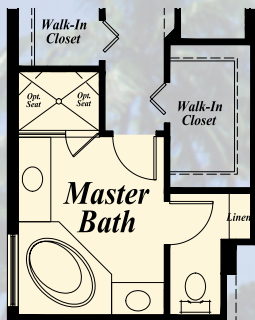
Elevation A



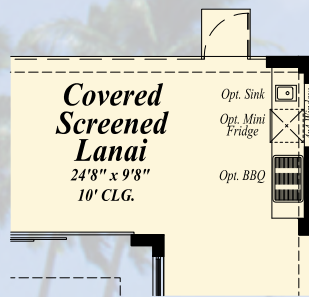
Elevation B

- 2 Bedrooms
- 2 1/2 Baths
- Great Room
- Dining
- Den
- Covered Screened Lanai

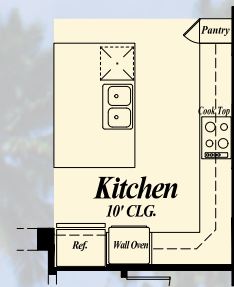
2-Car Garage
 2,080 a/c sq. ft.
 2,942 total sq. ft.



AVAILABLE MASTER BATH TUB & SHOWER



AVAILABLE OUTDOOR KITCHEN



AVAILABLE COOK TOP & WALL OVEN

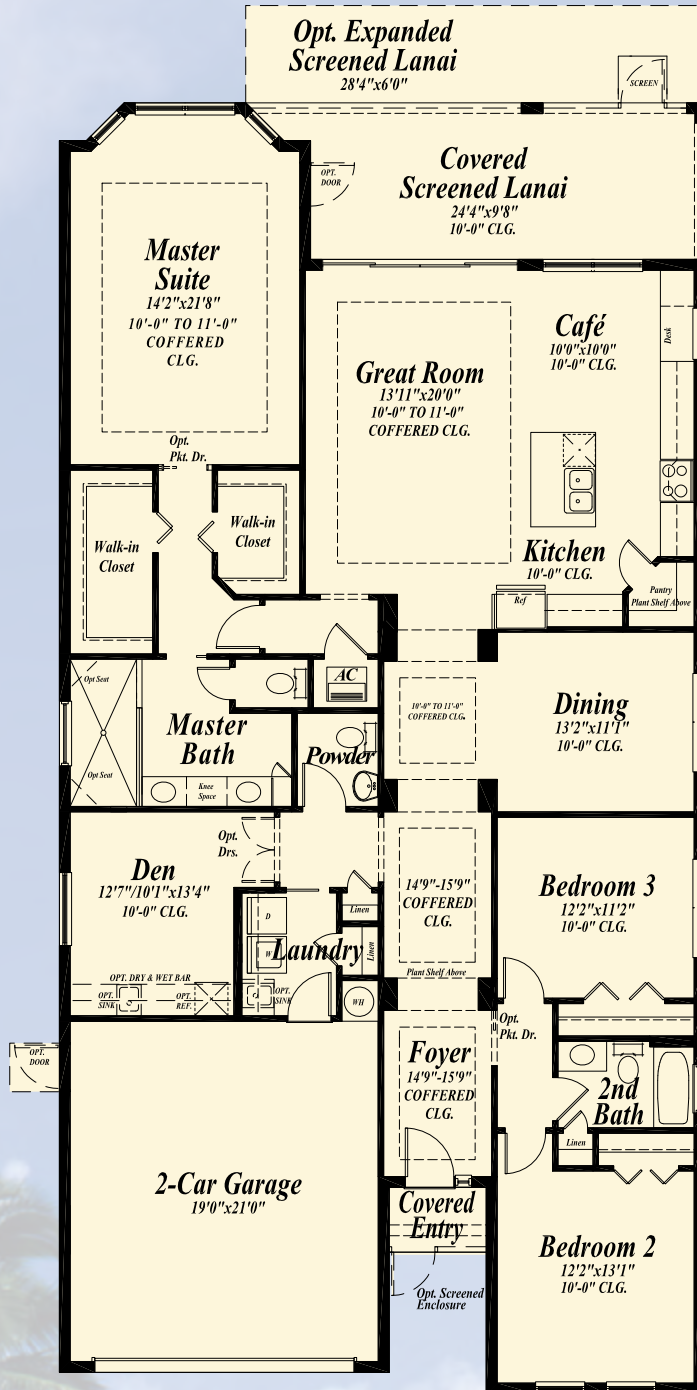
Ventura



Elevation A

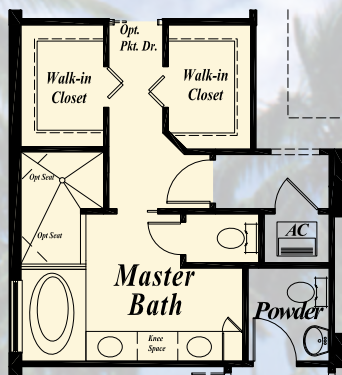


Elevation B

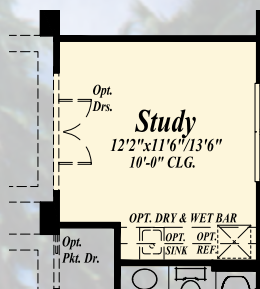


3 Bedrooms
 2 1/2 Baths
 Great Room
 Dining/Opt. Study
 Den
 Covered Screened Lanai

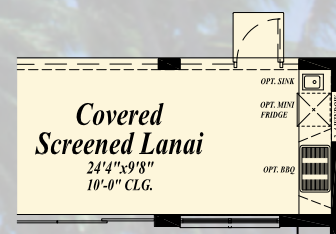
2-Car Garage
 2,387 a/c sq. ft.
 3,093 total sq. ft.



AVAILABLE
 MASTER BATH
 TUB & SHOWER



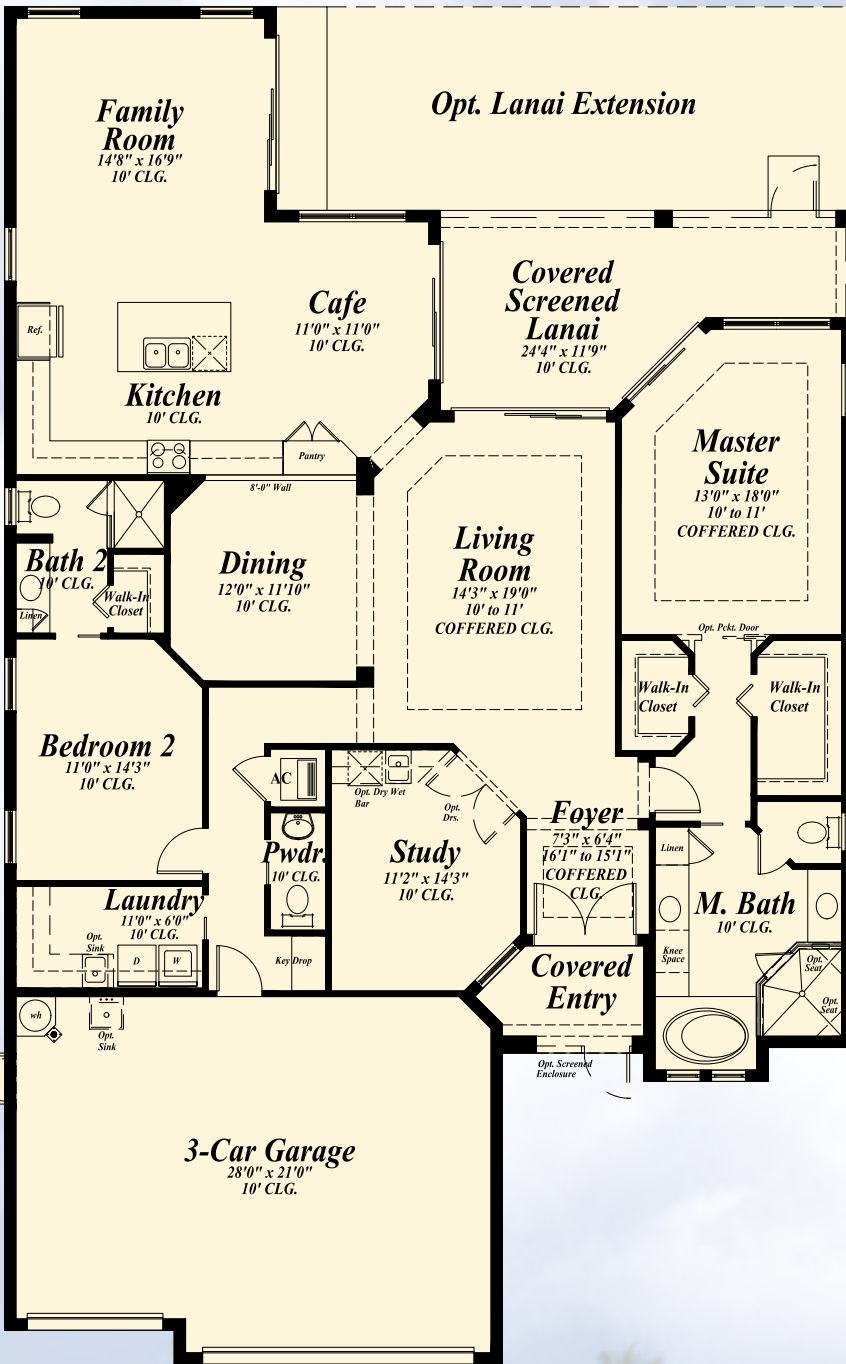
AVAILABLE
 STUDY



AVAILABLE
 OUTDOOR KITCHEN



Coronado



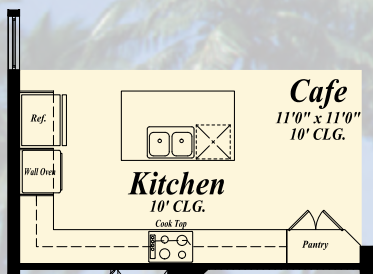
Elevation A



Elevation B

2 Bedrooms
 2 1/2 Baths
 Dining
 Study
 Covered Screened Lanai

3-Car Garage
 2,310 a/c sq. ft.
 3,203 total sq. ft.



AVAILABLE COOK TOP & WALL OVEN

Montecito



Elevation A

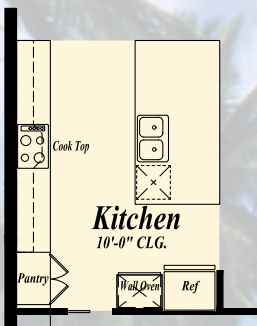


Elevation B



2 Bedrooms
 2 1/2 Baths
 Great Room
 Dining
 Den
 Covered Screened Lanai

3-Car Garage
 2,333 a/c sq. ft.
 3,439 total sq. ft.



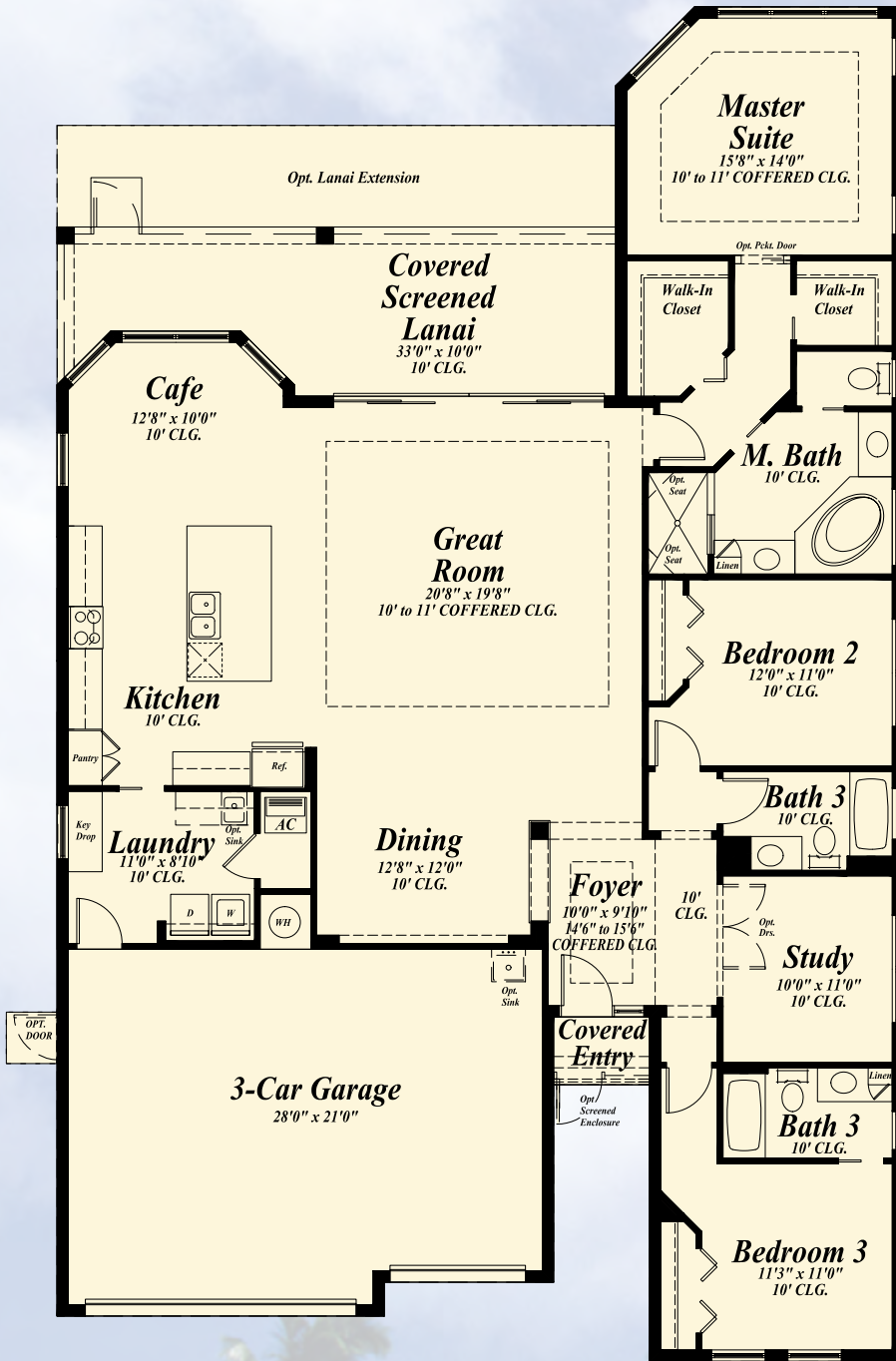
AVAILABLE COOK TOP & WALL OVEN



AVAILABLE OUTDOOR KITCHEN



Newport



Elevation A

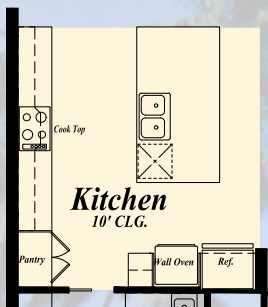


Elevation B

3 Bedrooms
3 Baths
Great Room
Dining
Study

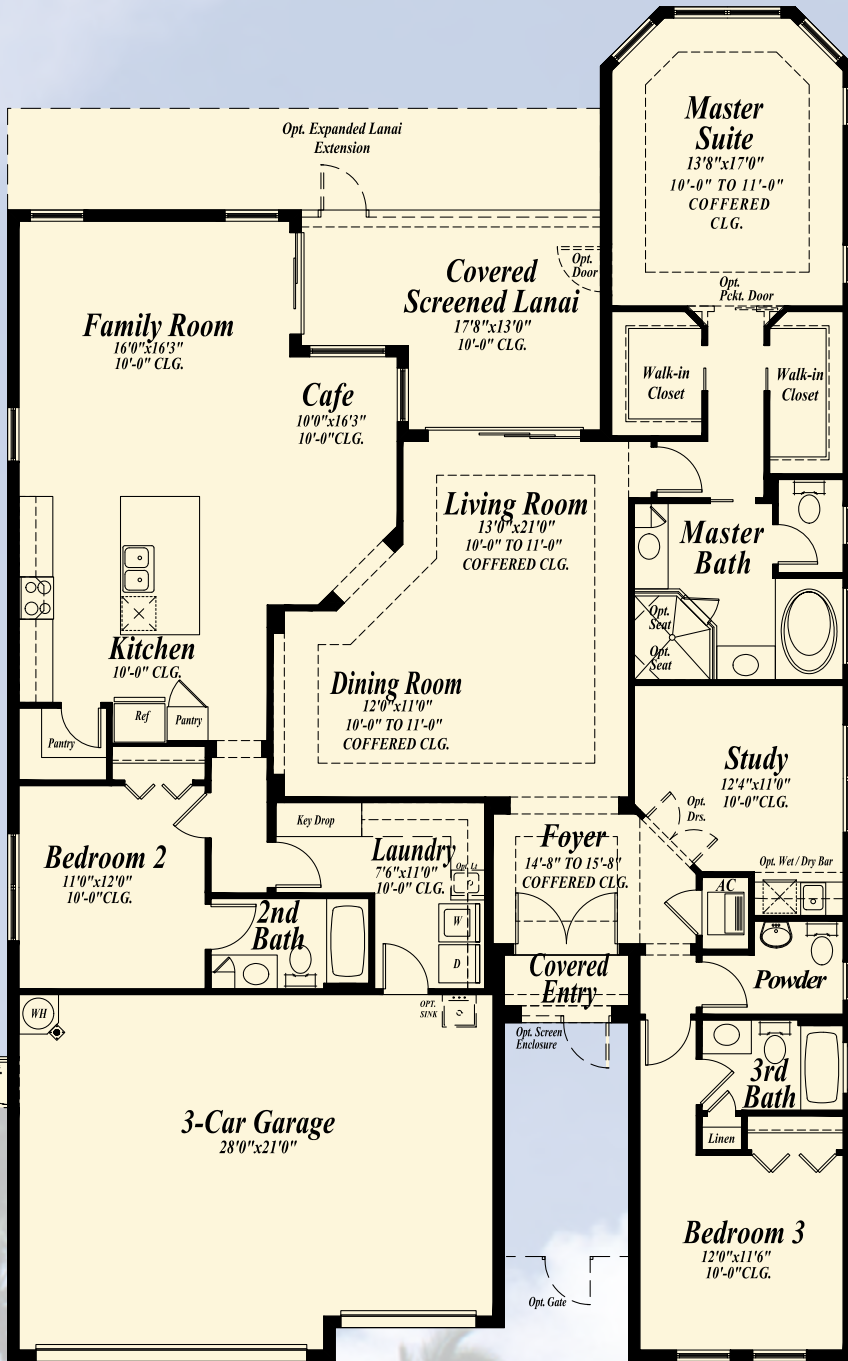
Covered Screened Lanai

3-Car Garage
2,438 a/c sq. ft.
3,392 total sq. ft.



AVAILABLE COOK TOP
& WALL OVEN

Solana



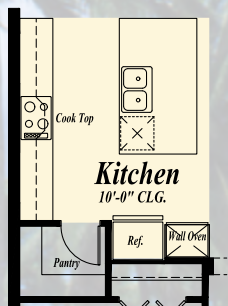
Elevation A



Elevation B

3 Bedrooms
 3 1/2 Baths
 Dining
 Study
 Covered Screened Lanai

3-Car Garage
 2,557 a/c sq. ft.
 3,451 total sq. ft.



AVAILABLE COOK TOP
 & WALL OVEN



RENAISSANCE CALABRIA

P = Parking
M = Decorated Model



RENAISSANCE

CALABRIA

Estate Homes
2,878 - 3,086 sq. ft.



Cascina



Elevation A



Elevation B

- 4 Bedrooms
 - 3 Baths
 - Great Room
 - Living Room
 - Dining Room
 - Den
 - Cafe
 - 2 Covered Screened Lanais
- 3-Car Garage
 - 2,878 a/c sq. ft.
 - 4,117 total sq. ft.





Rossano



Elevation A



Elevation B

- 3 Bedrooms
- 3 1/2 Baths
- Great Room
- Den/Opt. Bed 4
- Covered Screened Lanai
- 3-Car Garage
- 3,038 a/c sq. ft.
- 4,198 total sq. ft.



Santa Fiora



Elevation A



Elevation B



- 3 Bedrooms : 3-Car Garage
- 3 Baths : 3,086 a/c sq. ft.
- Great Room : 4,594 total sq. ft.
- Living Room
- Dining Room
- Den
- Cafe
- Covered Screened Lanai



included premium features

SIENA SINGLE FAMILY HOMES/CALABRIA ESTATES HOMES

ENERGY EFFICIENT HOMES - SAVING YOU MORE MONEY PER MONTH ON YOUR UTILITY BILLS

- Fresh air intake and insulated sealed duct air conditioning system for improved indoor air quality
- Low volatile organic compound (VOC) **Sherwin-Williams**® paints and **Mohawk**® carpet to improve well-being
- Exterior ventilation of microwave hood
- In-wall **Taexx**® pest defense system eliminates personal contact with active ingredients
- Energy efficient double-paned low-emissivity (*Low-E*) windows, sliders and glass doors
- Complete **GE** Energy Star® appliance package (*Calabria - stainless steel*)
- High efficiency 14-SEER **Carrier**® central air conditioning and heating
- Insulated fiberglass frontentry door
- Energy-saving compact fluorescent light bulbs
- Energy Star® bathroom exhaust fans
- R-30 insulated ceiling and R-4.1 on block walls
- Energy efficient quick-recovery water heater
- Automated drip irrigation system with rain sensor
- **Moen**® water-saving plumbing fixtures
- Water-saving, dual-flush, comfort height elongated water closets

FOR INCREASED SAFETY AND SECURITY

- Security system with contacts on all operable windows and doors (*Excluding overhead garage doors*), includes 1 year of monitoring
- 2 alarm keypad locations for added convenience (*Garage and master bedroom*)
- Wireless hand-held emergency button and exterior strobe for increased protection
- Decorative **Schlage**® satin nickel handle-set, entry dead bolt lock and door viewer
- Private 2-car garage or 3-car garage (*Per plan*) with automatic openers and transmitters
- Smoke and carbon monoxide detectors throughout
- Tempered sliding glass doors and bathroom windows for your safety
- Direct mounted 24 gauge galvanized steel panel storm shutters

FOR IMPROVED INDOOR COMFORT AND LIVABILITY

- **Schlage**® satin nickel lever hardware on all interior doors for ease of opening
- Raised height vanities in all master and secondary bathrooms
- **Moen**® satin nickel lever faucets for ease of use (*Calabria - Choice of satin nickel or chrome*)
- **Honeywell**® 7-day programmable thermostat with a digital display for enhanced viewing
- MERV 8 air conditioning filtration system
- Rocker-style electrical switches for ease of operation

FOR ENHANCED DESIGN

- 10' to 17'3" ceiling heights per plan with architecturally enhanced coffered ceilings
- 5 1/4" crown molding throughout living areas (*Calabria only*)
- 5 1/4" sculpted colonial wood baseboards and 2 1/4" colonial wood casings
- Screened lanais on all plans
- 8' tall single door with sidelight or double door entry (*Per plan*)
- Over-sized walk-in closets in master bedrooms
- His and hers master bathroom raised height vanities
- Professionally designed lush landscape package with fully sodded lot

FOR GREATER CONVENIENCE

- 10-year structural warranty
- 3-year **GE** appliance warranty
- 10-year limited warranty on the air conditioning and heating system parts
- **Sentricon**® termite elimination system

FOR HIGHER QUALITY CONSTRUCTION

- Independent 3rd party testing to ensure building envelope is sealed and energy losses are diminished
- Professional 3rd party verification of central air conditioning and heating system design for assurance of circulation, air flow and comfort
- Steel reinforced monolithic concrete foundation system with reinforced concrete block exterior walls



included premium features

SIENA SINGLE FAMILY HOMES/CALABRIA ESTATES HOMES

- Designer selected paver driveways, walkways, entries and covered lanais
- **Sherwin-Williams**® acrylic finish on garage floors
- Professionally engineered roof truss system
- Stucco exterior finish with 3rd party testing for improved weather protection
- **Sherwin-Williams**®, **Loxon**® 2-coat exterior paint system for long lasting color retention and climate protection
- **Certainteed**® 30-year dimensional roof shingles with embedded mildew resistant properties (*Siena only*)
- Distinctive “S” shaped **Hanson**® Regal cement roof tile (*Calabria only*)
- PEX piping plumbing system for superior performance
- **DensShield**® tile backer at all tub and shower areas for added protection

EXCEPTIONAL INTERIOR FINISHES

Kitchen

- Granite counter tops with backsplash
- Designer selected recessed panel wood cabinets with 36” uppers and an accented raised cabinet bump-out above cook top (*Siena only*)
- Designer selected recessed panel wood cabinets with 42” uppers and an accented raised cabinet bump-out above cooktop (*Calabria only*)
- Double compartment under-mount (50/50 or 70/30) stainless steel sink
- **Moen**® faucet with integrated pull-out sprayer
- 1/2 hp Badger® garbage disposal
- **GE** Energy Star® 25 cubic foot side-by-side refrigerator with in-door ice and water (*Calabria - stainless steel*)
- **GE** Energy Star® sound insulated automatic dishwasher (*Calabria - stainless steel*)
- **GE** free-standing, smooth top, self-cleaning electric range (*Calabria - stainless steel*)
- **GE** microwave hood with exterior ventilation (*Calabria - stainless steel*)
- Recessed lighting with energy-saving compact fluorescent light bulbs

Master Bathroom

- Granite counter tops with backsplash

- Raised height recessed panel wood cabinet vanities with his and hers under-mount bathroom sinks
- Glass shower enclosures with tiled recessed soap niche (*Siena only*)
- Deluxe frameless & seamless shower enclosures with travertine corner shelf and soap dish (*Calabria only*)
- Luxurious drop-in acrylic tub with ceramic tile surround (*Per plan*)
- Full width mirror over vanity with decorator selected Progress Lighting® satin nickel wall light above
- Recessed lighting with energy-saving compact fluorescent light bulbs
- Vapor proof recessed light with energy-saving compact fluorescent light bulb in shower
- Over-sized decorative medicine cabinets
- **Mohawk**® 12”x12” ceramic tile floors, 8”x10” ceramic tile on shower walls and 2”x2” ceramic tile on shower floors
- **Moen**® fixtures with lever handles for ease of use
- Energy Star® bathroom exhaust fans on separate switch
- Towel and bath accessories
- Water-saving dual-flush, comfort-height elongated water closets

Secondary and Powder Bathrooms

- Granite counter tops with backsplash
- Raised height recessed panel wood cabinet vanities with under-mount sinks (*All secondary bathrooms*)
- Pedestal sink (*All powder bathrooms*)
- Full width mirror over vanity with decorator selected Progress Lighting® satin nickel wall light above
- Recessed lighting with energy-saving compact fluorescent light bulbs
- Vapor proof recessed light with energy-saving compact fluorescent light bulb over tub/shower
- Over-sized decorative medicine cabinets (*Per plan*)
- **Mohawk**® 12”x12” ceramic tile floors, 8”x10” ceramic tile on tub/shower walls
- **Sterling**® bathtubs in all secondary bathrooms
- **Moen**® fixtures with lever handles for ease of use



included premium features

SIENA SINGLE FAMILY HOMES/CALABRIA ESTATES HOMES

- Energy Star® bathroom exhaust fans on separate switch
- Towel and bath accessories
- Water-saving dual-flush, comfort-height elongated water closets

Laundry

- Granite counter tops with backsplash (*Per plan*)
- Designer selected recessed panel wood cabinets (*Siena - per plan*)
- Designer selected recessed panel wood cabinets, including 42" uppers and a drop in laundry tub in the lowers (*Calabria only*)
- **GE** Energy Star® super capacity washer and **GE** large capacity DURA DRUM™ dryer
- One row of ventilated wire shelving

WITHIN YOUR HOME

- 18" **Mohawk**® ceramic tile in foyer, kitchen, great room, living room, dining, a/c closet, café, powder and laundry room
- **Luxurious Mohawk**® stain-resistant, low VOC carpeting with high performance carpet cushion in all bedrooms and den
- Knockdown textured finish on ceilings and light orange peel finish on interior walls
- 8' tall 6-panel interior doors (*Siena only*)
- 8' tall 2-panel interior doors (*Calabria only*)
- High speed structured wiring network – certified CAT-5E data lines and RG-6 quad shield coaxial cable
- Telephone pre-wire in kitchen, great room, living room, den and all bedrooms
- Cable television pre-wire in great room, living room, den, and all bedrooms
- Ceiling fan pre-wire in great room, living room, den, covered lanai, and all bedrooms

- 50-gallon energy efficient quick-recover water heater
- Recessed lighting with energy-saving compact fluorescent light bulbs in entry, foyer (*Per plan*), kitchen, covered lanai, and all bathrooms
- Decorative Progress Lighting® satin nickel fixtures in all bathrooms, dining room, foyer (*Per plan*) and café
- Electric entry door chime
- White solid-surface window sills
- Vinyl clad steel ventilated closet shelving
- Air conditioned bathrooms and walk-in closets

OUTSIDE OF YOUR HOME

- Professionally designed lush landscape package with fully sodded lot
- Automated drip irrigation system with rain sensor
- **Sentricon**® termite elimination system
- Progress Lighting® coach lights
- Hose bibs at front and rear for your convenience
- Gutters at front entry (*Per plan*)
- Designer selected paver driveways, walkways, entries and covered lanais

MINTO ONLY USES QUALITY BRANDS



Buy it for looks. Buy it for life.®



GE imagination at work



SHERWIN WILLIAMS



All dimensions, prices, plans, specifications, features, programs, amenities, designs, materials, HOA fees, condo fees and availability are approximate and subject to change or substitution by Seller without notice. Exterior colors may vary. Artist's rendering. CGC 1505726. © 2013 Minto Communities, LLC All Rights Reserved. 5/13

