

OLYMPIA



beinspired

OLYMPIA

YOUR KITCHEN

- Dramatic gourmet kitchen featuring wood recessed panel cabinet doors with 42" upper cabinets
- Granite countertops with 1 1/2" built -up edge and 4" backsplash
- Matching designer cabinet pantry or walk-in pantry closet with close mesh ventilated shelving (per plan)
- Recessed lighting with energy-saving compact fluorescent light bulbs
- Stainless steel **Whirlpool** appliances
- 25 cubic foot **Whirlpool** Energy Star® side-by-side refrigerator with in-door ice and water
- **Whirlpool** drop-in electric cooktop
- **Whirlpool** microwave
- Exterior vented stainless steel range hood
- **Whirlpool** stainless steel double wall oven
- **Whirlpool** Energy Star® sound insulated automatic dishwasher
- Double compartment (50/50) undermount stainless steel sink
- Decorator selected stainless steel **Moen**® faucet with integrated pull-out sprayer
- **InSinkErator** Waste Disposal

YOUR OWNER'S SUITE AND BATHS

- Raised height vanities with recessed panel wood doors in master and secondary baths
- Custom cultured marble vanity tops with integral sinks
- **Mansfield** Pedestal sink in powder room

- **Armstrong**® 12"x12" ceramic tile floors & 8"x12" ceramic wall tile in wet areas of full baths
- Deluxe acrylic roman tub with ceramic tile surround and separate shower in master bath (per plan)
- Decorator selected **Moen**® brushed nickel faucets in all baths
- Full width oversized mirrors to 8' over vanities in master bath
- Decorative mirror in powder bath
- Full width mirrors over vanities in secondary baths with decorator lighting
- Water saving elongated water closets
- Coordinated bath & towel accessories
- Large walk-in closet(s) (per plan)
- Moisture resistant **DensShield**® backing shower walls and tub

YOUR MINTO

- Minto - over half a century of innovation, financial strength and integrity
- Award winning community, lifestyle and home designs
- Minto's nationally recognized construction quality
- Minto's exclusive **MasterCare**™ customer care program
- Personalized and convenient home mortgage and title services available thru FBC Mortgage & Founders Title Services
- Three-year **Whirlpool** Appliance warranty
- Ten-year structural warranty program



beinspired

It is understood by the purchaser that all furnishings, draperies, mirror work, wallpaper and decorator items shown in the models, are for display purposes only and are not included in the purchase price. Landscaping may vary as to maturity, specifications and number. Electrical, cable TV, data and phone outlets may vary in quantity, type and location from what is shown in the model. Artist's renderings, all dimensions, specifications and features are approximate and subject to change without notice. CBC 1258779, CGC 1505726, CGC 1519880. © 2012 Minto Communities, LLC All Rights Reserved. 4/12



THE GRANDEZZA COLLECTION

INCLUDED PREMIUM FEATURES



OLYMPIA

mintogreen

Minto makes living green simple.

For over 50 years Minto has been demonstrating how innovative design can contribute to a healthier planet and improve comfort for our customers.

Minto is committed to creating quality green spaces that inspire our customers and employees to live green.



YOUR OLYMPIA LIFESTYLE

- Premier Wellington location
- Top rated schools
- Convenient to shopping, services, employment & transportation - in the heart of it all
- Great area with restaurants, Whole Foods, shops and services
- Stunning community master plan with lakes, landscaped open areas, nearby retail shopping
- Neighborhood parks & trails

YOUR OLYMPIA NEIGHBORHOOD

- Wellington's premier community
- Prestigious entry features, landscaping and 4 gated entries
- Beautiful master-planned pedestrian-friendly community with lakes, preserves, landscaped open areas and sidewalks on both sides of the street
- Exquisite Club and Recreation Center with:
 - State-of-the-art fitness center
 - Lanai for social gatherings
 - Resort-style swimming pool with Shade Cabanas
 - Waterworks area
 - Tennis Courts
 - Basketball Courts
 - Volleyball
 - Community/Club Room
 - Teen Room
 - Multimedia room with television, computer stations & library
 - Expansive outdoor terrace
 - Activity room with card tables
 - Wet bar & Coffee station
 - Playground
- Decorative street lighting

YOUR ENERGY SAVING FEATURES

- Neighborhood, home design and construction for energy efficiency & sustainability
- New homes designed and constructed to meet the following agency standards
 -  - Energy Star® Partner
 -  - FPL® BuildSmart®
- Energy efficient double pane insulated low-emissivity windows, sliders and glass doors for improved energy performance, comfort and savings
- High efficiency **Carrier**® central air conditioning & heating
- **Honeywell**® 7-day programmable thermostat
- Environmentally safe R410A refrigerant
- Improved indoor air quality for your health through use of fresh air intake and insulated sealed duct air conditioning distribution system, efficient air filters, carbon monoxide detectors, low volatile organic compound (VOC) carpet, zero VOC and low VOC paints and exterior vented microwave
- Energy efficient 50 or 80-gallon quick-recovery **Rheem**® water heater (per plan)
- Energy Star® rated **Whirlpool** refrigerator and dishwasher
- Energy Star® rated **Broan**® bath exhaust fans
- Energy saving compact fluorescent light bulbs
- Architecturally accented, 8' tall **Plastpro**™ insulated fiberglass double entry doors, or single with side light, for extended weather resistant life (per plan)
- R-30 insulated ceiling & R-4.1 exterior walls
- **Moen**® water saving plumbing fixtures
- Luxurious **Armstrong**® stain-resistant, environmentally friendly low VOC carpeting with high performance carpet cushion
- 25 cubic foot **Whirlpool** Energy Star® side-by-side refrigerator with in-door ice and water
- Exterior vented stainless steel range hood

- **Whirlpool** Energy Star® sound insulated automatic dishwasher
- Water saving elongated water closets

YOUR HOME

- Inspired elevations with elegant architectural appointments
- Covered entry and patio
- Professionally designed landscaping and fully sodded homesite
- Elegant brick paver driveway, entry walkway and covered patio
- Decorative garage coach lights
- **Color Wheel**® Flex Lox exterior paint for lasting color retention and weather protection
- **Hanson**® Regal concrete roof tiles
- **Schlage**® satin nickel handleset
- **Schlage**® satin nickel levers on interior doors
- **Schlage**® entry deadbolt lock & door viewer
- Waterproof exterior electrical outlets and exterior hose connection(s) for your convenience
- Entry door chime
- Automatic irrigation system on entire lot utilizing lake water to reduce potable water demand

YOUR PEACE OF MIND

- Design & construction in accordance with rigorous wind resistive requirements of Florida Building Code
- Steel-reinforced monolithic concrete foundation with vapor barrier
- Professionally engineered reinforced concrete block first floor and second floor walls where possible
- Smoke/carbon monoxide detectors at each bedroom for your peace of mind
- Security system with 2 **Honeywell**® keypads and contacts on all operable windows and doors (excludes exterior garage doors)

- 8' tall tempered sliding glass doors for your safety
- Professionally engineered floor and roof truss systems
- Impact resistant embossed steel garage door
- **Sentricon**® termite baiting system
- **Taexx**® pest control systems

WITHIN YOUR HOME

- Private 2, 3 & 4-car garages with **Liftmaster**® automatic opener and transmitters (per plan)
- Dramatic 10' - 12' ceiling heights on first floor (per plan)
- 18" **Armstrong**® ceramic tile throughout the main first floor living areas of your home (per plan)
- **Whirlpool** super capacity washer & dryer
- **On-Q** High speed structured wiring network - certified Cat-5E data lines and RG-6 quad shield coaxial cable
- Luxurious **Armstrong**® stain-resistant, environmentally friendly low VOC carpeting with high performance carpet cushion
- Knockdown textured drywall finish on ceilings
- Light orange peel finish on interior walls
- **Color Wheel**® high quality interior paint - zero volatile organic compound (VOC) on walls and low VOC semi-gloss finish on doors and trim
- Decora-style light switches
- 6-panel interior doors
- **Schlage**® satin nickel levers on interior doors
- Sculpted colonial wood baseboard and casing
- Air-conditioned, lighted walk-in closets
- **Dupont**® solid surface window sills
- Pre-wired for cable TV and ceiling fans in family/great room & bedrooms per plan. Pre-wired for telephone in kitchen, master bedrooms, den and family room (per plan)
- Epoxy coated steel ventilated closet shelving



GRANDEZZA COLLECTION

AVIANO

3 Bedrooms, Club Room, 3 1/2 Baths, 3-Car Garage



MISSION ELEVATION

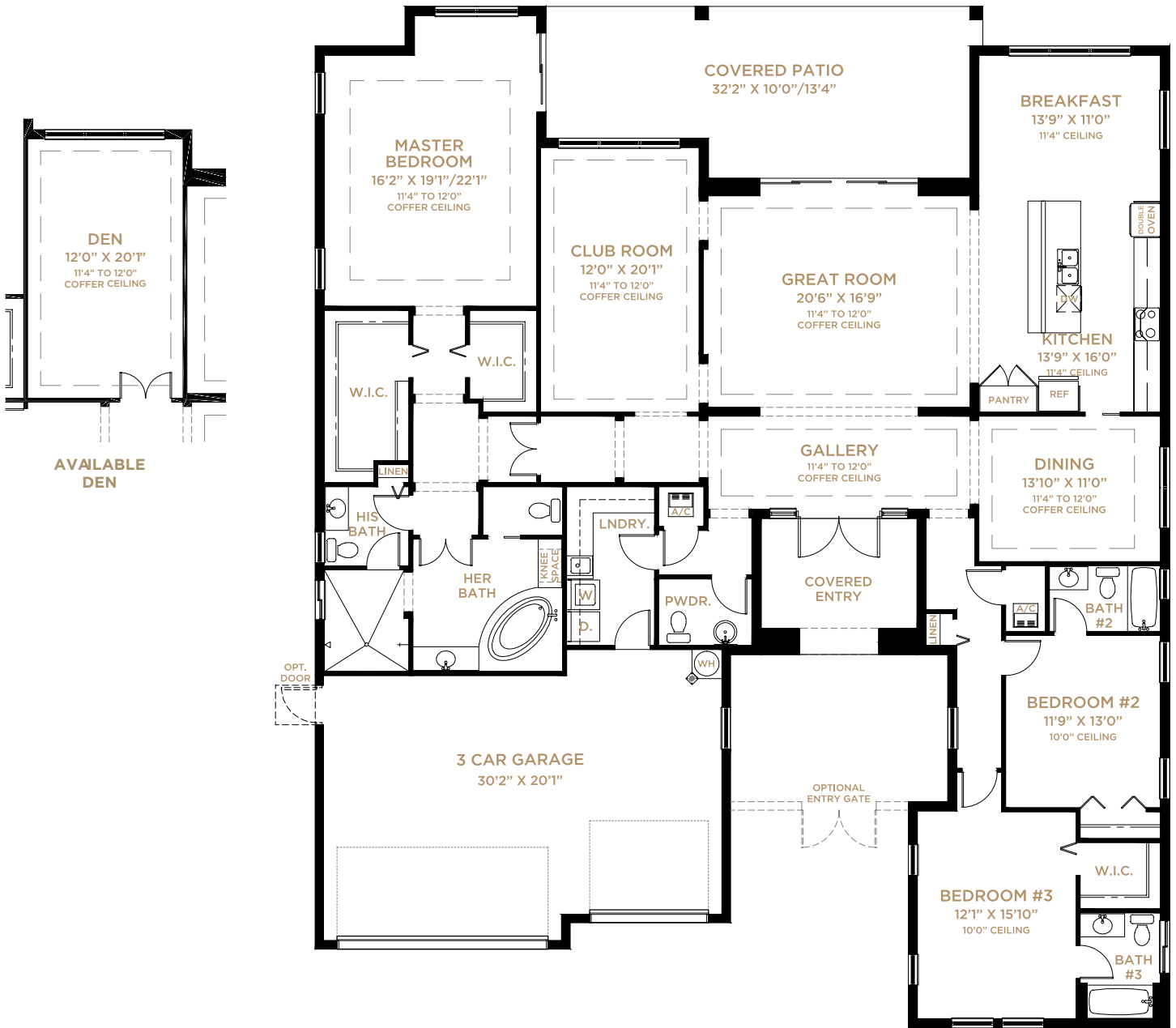


WEST INDIES ELEVATION



GRANDEZZA COLLECTION

AVIANO



AVIANO

Total - Living	3,158
Garage	654
Covered Patio	397
Covered Entry	123
Total	4,332



GRANDEZZA COLLECTION

BELLAGIO

3 Bedrooms, Den, Club Room, 3 1/2 Baths, 4-Car Garage



PALM BEACH ELEVATION



**PALM BEACH ELEVATION
(WITH BEDROOM #5)**



WEST INDIES ELEVATION



**WEST INDIES ELEVATION
(WITH BEDROOM #5)**

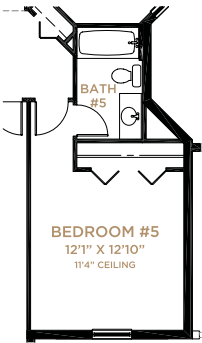


GRANDEZZA COLLECTION

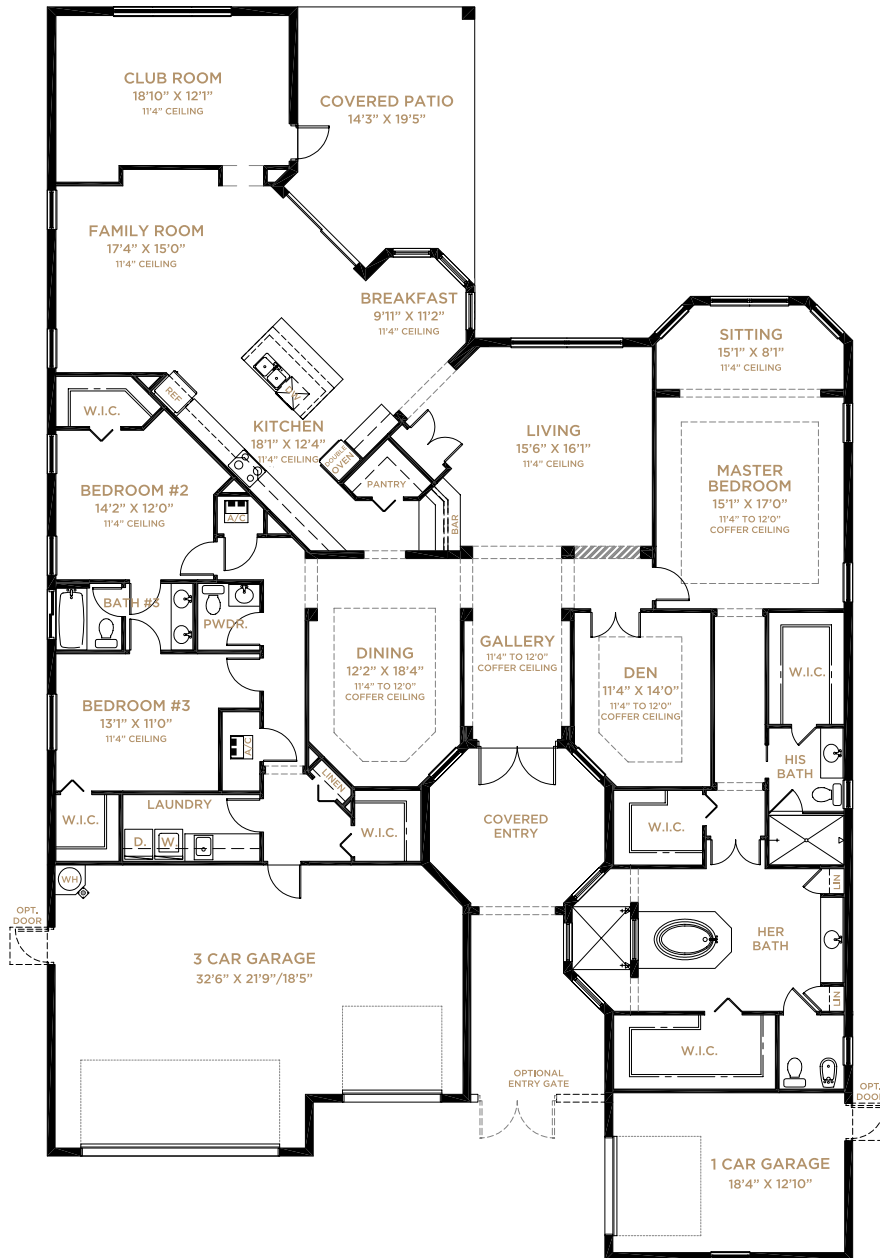
BELLAGIO



AVAILABLE BEDROOM #4
W/BATH #4



AVAILABLE
BEDROOM #5
W/BATH #5



AVAILABLE EXERCISE ROOM

BELLAGIO

Total - Living	3,702
Garage	1,008
Covered Patio	278
Covered Entry	159
Total	5,147



GRANDEZZA COLLECTION

DIAMANTE

5 Bedrooms, Den, Club Room, Loft, 5 1/2 Baths, 4-Car Garage



PALM BEACH ELEVATION



**PALM BEACH ELEVATION
(WITH BEDROOM #7)**



WEST INDIES ELEVATION

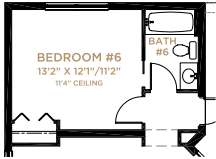


**WEST INDIES ELEVATION
(WITH BEDROOM #7)**

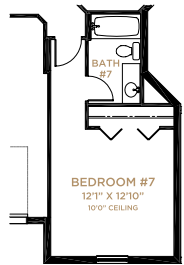


GRANDEZZA COLLECTION

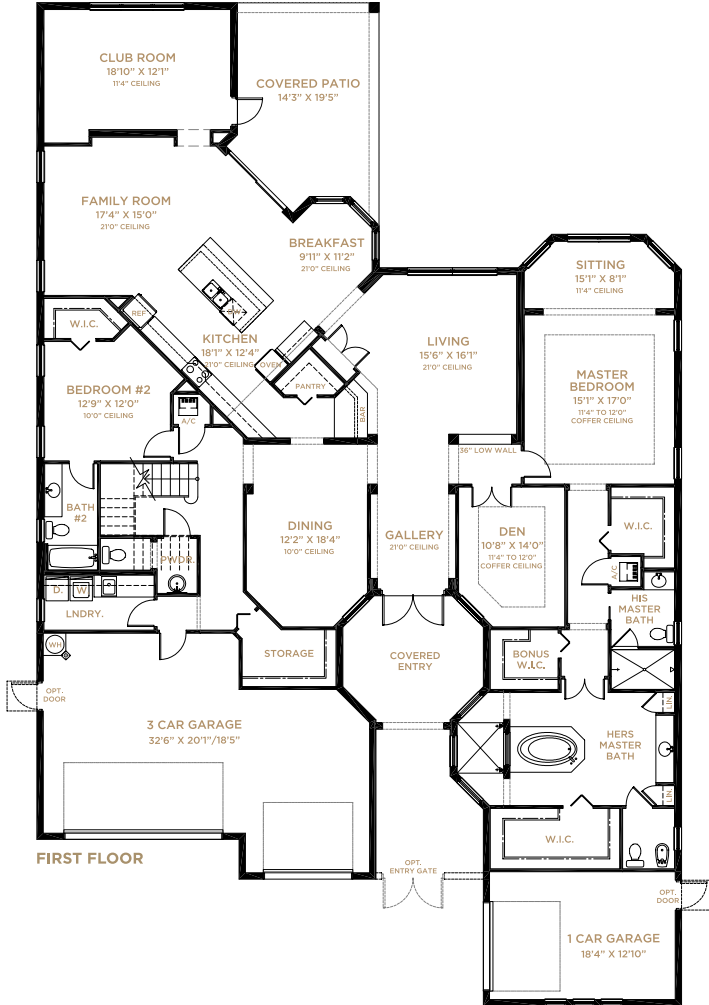
DIAMANTE



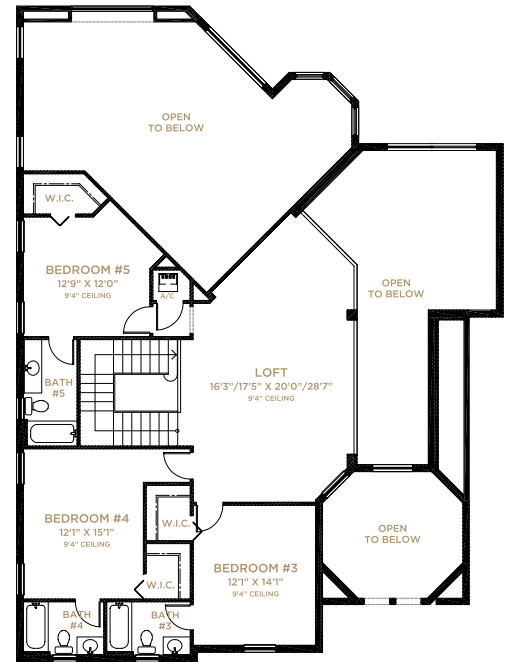
AVAILABLE
BEDROOM #6
W/BATH #6



AVAILABLE
BEDROOM #7
W/BATH #7



FIRST FLOOR



SECOND FLOOR



AVAILABLE EXERCISE ROOM

DIAMANTE

First Floor	3,585
Second Floor	1,326
Total - Living	4,911
Garage	951
Covered Patio	278
Covered Entry	162
Total	6,302



GRANDEZZA COLLECTION

TRADIZIONE

5 Bedrooms, Loft, 5 1/2 Baths, 4-Car Garage



MISSION ELEVATION



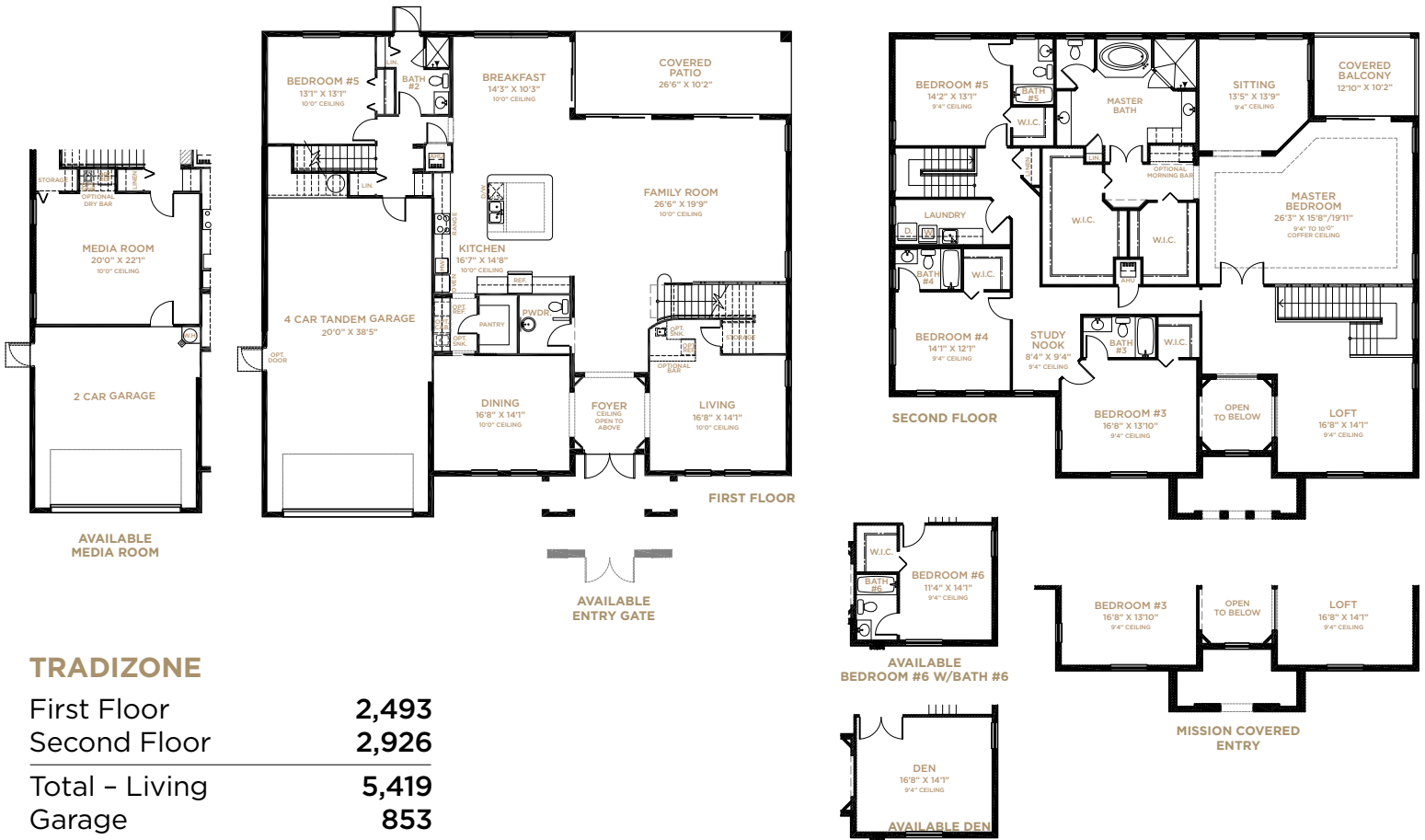
WEST INDIES ELEVATION



GRANDEZZA COLLECTION

TRADIZIONE

5 Bedrooms, Loft, 5 1/2 Baths, 4-Car Garage



TRADIZIONE

First Floor	2,493
Second Floor	2,926
Total - Living	5,419
Garage	853
Covered Patio	269
Covered Entry	106
Covered Balcony	130
Total	6,777

OLYMPIA

YOUR KITCHEN

- Dramatic gourmet kitchen featuring wood recessed panel cabinet doors with 42" upper cabinets
- Granite countertops with 1 1/2" built -up edge and 4" backsplash
- Matching designer cabinet pantry or walk-in pantry closet with close mesh ventilated shelving (per plan)
- Recessed lighting with energy-saving compact fluorescent light bulbs
- Stainless steel **Whirlpool** appliances
- 25 cubic foot **Whirlpool** Energy Star® side-by-side refrigerator with in-door ice and water
- **Whirlpool** drop-in electric cooktop
- **Whirlpool** microwave
- Exterior vented stainless steel range hood
- **Whirlpool** stainless steel double wall oven
- **Whirlpool** Energy Star® sound insulated automatic dishwasher
- Double compartment (50/50) undermount stainless steel sink
- Decorator selected stainless steel **Moen**® faucet with integrated pull-out sprayer
- **InSinkErator** Waste Disposal

YOUR OWNER'S SUITE AND BATHS

- Raised height vanities with recessed panel wood doors in master and secondary baths
- Custom cultured marble vanity tops with integral sinks
- **Mansfield** Pedestal sink in powder room

- **Mohawk**® 12"x12" ceramic tile floors and 8"x12" ceramic wall tile in wet areas of full baths
- Deluxe acrylic roman tub with ceramic tile surround and separate shower in master bath (per plan)
- Decorator selected **Moen**® brushed nickel faucets in all baths
- Full width oversized mirrors to 8' over vanities in master bath
- Decorative mirror in powder bath
- Full width mirrors over vanities in secondary baths with decorator lighting
- Water saving elongated water closets
- Coordinated bath & towel accessories
- Large walk-in closet(s) (per plan)
- Moisture resistant **DensShield**® backing shower walls and tub

YOUR MINTO

- Minto - over half a century of innovation, financial strength and integrity
- Award winning community, lifestyle and home designs
- Minto's nationally recognized construction quality
- Minto's exclusive **MasterCare**™ customer care program
- Personalized and convenient home mortgage and title services available thru FBC Mortgage & Founders Title Services
- Three-year **Whirlpool** Appliance warranty
- Ten-year structural warranty program



beinspired

It is understood by the purchaser that all furnishings, draperies, mirror work, wallpaper and decorator items shown in the models, are for display purposes only and are not included in the purchase price. Landscaping may vary as to maturity, specifications and number. Electrical, cable TV., data and phone outlets may vary in quantity, type and location from what is shown in the model. Artist's renderings, all dimensions, specifications and features are approximate and subject to change without notice. CBC 1258779, CGC 1505726, CGC 1519880. © 2012 Minto Communities, LLC All Rights Reserved. 5/12



THE GRANDEZZA COLLECTION

INCLUDED PREMIUM FEATURES

OLYMPIA

mintogreen

Minto makes living green simple.

For over 50 years Minto has been demonstrating how innovative design can contribute to a healthier planet and improve comfort for our customers.

Minto is committed to creating quality green spaces that inspire our customers and employees to live green.



YOUR OLYMPIA LIFESTYLE

- Premier Wellington location
- Top rated schools
- Convenient to shopping, services, employment & transportation - in the heart of it all
- Great area with restaurants, Whole Foods, shops and services
- Stunning community master plan with lakes, landscaped open areas, nearby retail shopping
- Neighborhood parks & trails

YOUR OLYMPIA NEIGHBORHOOD

- Wellington's premier community
- Prestigious entry features, landscaping and 4 gated entries
- Beautiful master-planned pedestrian-friendly community with lakes, preserves, landscaped open areas and sidewalks on both sides of the street
- Exquisite Club and Recreation Center with:
 - State-of-the-art fitness center
 - Lanai for social gatherings
 - Resort-style swimming pool with Shade Cabanas
 - Waterworks area
 - Tennis Courts
 - Basketball Courts
 - Volleyball
 - Community/Club Room
 - Teen Room
 - Multimedia room with television, computer stations & library
 - Expansive outdoor terrace
 - Activity room with card tables
 - Wet bar & Coffee station
 - Playground
- Decorative street lighting

YOUR ENERGY SAVING FEATURES

- Neighborhood, home design and construction for energy efficiency & sustainability
-  - Energy Star® Partner
-  - FPL® BuildSmart®
- Energy efficient double pane insulated low-emissivity windows, sliders and glass doors for improved energy performance, comfort and savings
- High efficiency **Carrier**® central air conditioning & heating
- **Honeywell**® 7-day programmable thermostat
- Environmentally safe R410A refrigerant
- Improved indoor air quality for your health through use of fresh air intake and insulated sealed duct air conditioning distribution system, efficient air filters, carbon monoxide detectors, low volatile organic compound (VOC) carpet, zero VOC and low VOC paints and exterior vented microwave
- Energy efficient 50 or 80-gallon quick-recovery **Rheem**® water heater (per plan)
- Energy Star® rated **Whirlpool** refrigerator and dishwasher
- Energy Star® rated **Broan**® bath exhaust fans
- Energy saving compact fluorescent light bulbs
- Architecturally accented, 8' tall **Plastpro**™ insulated fiberglass double entry doors, or single with side light, for extended weather resistant life (per plan)
- R-30 insulated ceiling & R-4.1 exterior walls
- **Moen**® water saving plumbing fixtures
- Luxurious **Mohawk**® stain-resistant, environmentally friendly low VOC carpeting with high performance carpet cushion
- 25 cubic foot **Whirlpool** Energy Star® side-by-side refrigerator with in-door ice and water
- Exterior vented stainless steel range hood
- **Whirlpool** Energy Star® sound insulated automatic dishwasher
- Water saving elongated water closets

YOUR HOME

- Inspired elevations with elegant architectural appointments
- Covered entry and patio
- Professionally designed landscaping and fully sodded homesite
- Elegant brick paver driveway, entry walkway and covered patio
- Decorative garage coach lights
- **Color Wheel**® Flex Lox exterior paint for lasting color retention and weather protection
- **Hanson**® Regal concrete roof tiles
- **Schlage**® satin nickel handleset
- **Schlage**® satin nickel levers on interior doors
- **Schlage**® entry deadbolt lock & door viewer
- Waterproof exterior electrical outlets and exterior hose connection(s) for your convenience
- Entry door chime
- Automatic irrigation system on entire lot utilizing lake water to reduce potable water demand

YOUR PEACE OF MIND

- Design & construction in accordance with rigorous wind resistive requirements of Florida Building Code
- Steel-reinforced monolithic concrete foundation with vapor barrier
- Professionally engineered reinforced concrete block first floor and second floor walls where possible
- Smoke/carbon monoxide detectors at each bedroom for your peace of mind
- Security system with 2 **Honeywell**® keypads and contacts on all operable windows and doors (excludes exterior garage doors)
- 8' tall tempered sliding glass doors for your safety
- Professionally engineered floor and roof truss systems

- Impact resistant embossed steel garage door
- **Sentricon**® termite baiting system
- **Taexx**® pest control systems

WITHIN YOUR HOME

- Private 2, 3 & 4-car garages with **Liftmaster**® automatic opener and transmitters (per plan)
- Dramatic 10' - 12' ceiling heights on first floor (per plan)
- 18" **Mohawk**® ceramic tile throughout the main first floor living areas of your home (per plan)
- **Whirlpool** super capacity washer & dryer
- **On-Q** High speed structured wiring network - certified Cat-5E data lines and RG-6 quad shield coaxial cable
- Luxurious **Mohawk**® stain-resistant, environmentally friendly low VOC carpeting with high performance carpet cushion
- Knockdown textured drywall finish on ceilings
- Light orange peel finish on interior walls
- **Color Wheel**® high quality interior paint - zero volatile organic compound (VOC) on walls and low VOC semi-gloss finish on doors and trim
- Decora-style light switches
- 6-panel interior doors
- **Schlage**® satin nickel levers on interior doors
- Sculpted colonial wood baseboard and casing
- Air-conditioned, lighted walk-in closets
- **Dupont**® solid surface window sills
- Pre-wired for cable TV and ceiling fans in family/great room & bedrooms per plan. Pre-wired for telephone in kitchen, master bedrooms, den and family room (per plan)
- Epoxy coated steel ventilated closet shelving



SPLENDIDO COLLECTION

BIANCA

3 Bedrooms, Den, 3 1/2 Baths, 2-Car Garage



PALM BEACH ELEVATION

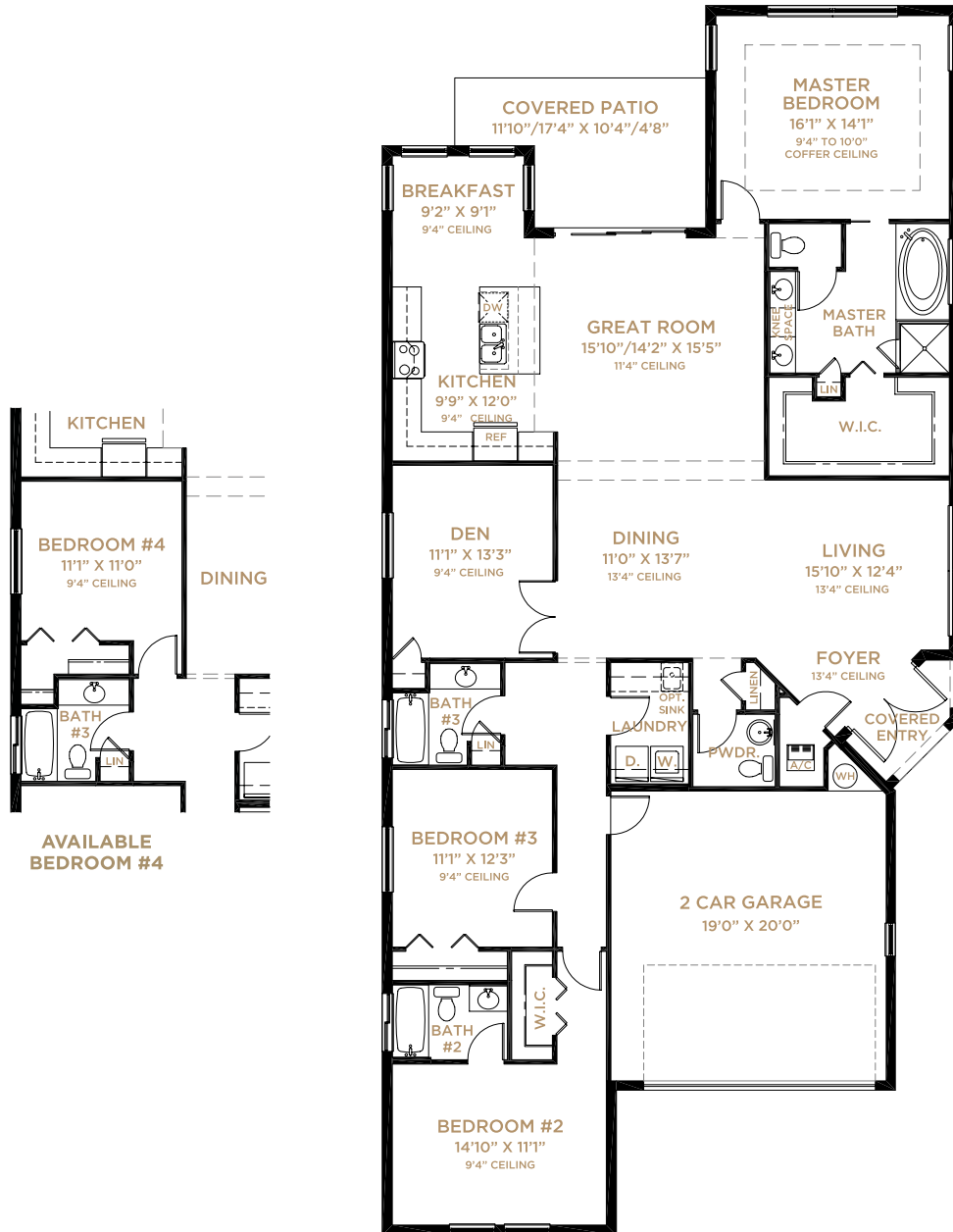


WEST INDIES ELEVATION



SPLENDIDO COLLECTION

BIANCA



BIANCA

Total - Living	2,308
Garage	415
Covered Patio	148
Covered Entry	36
<hr/>	
Total	2,907



SPLENDIDO COLLECTION

CAPRI

3 Bedrooms, Loft, 2 1/2 Baths, 3-Car Garage



PALM BEACH

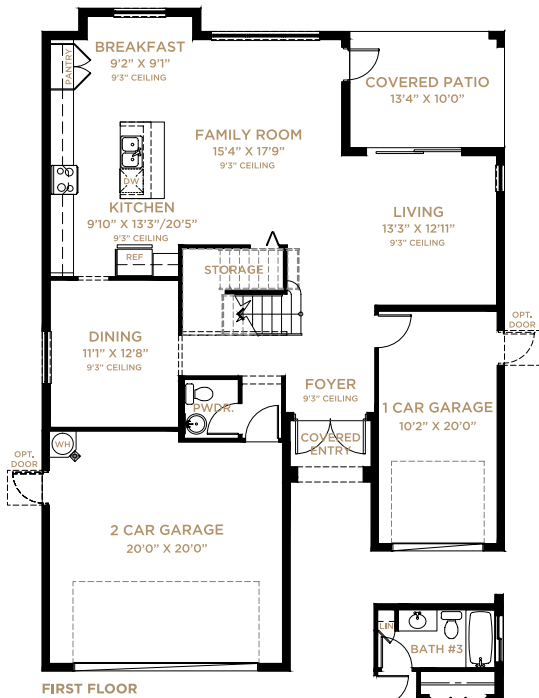


WEST INDIES ELEVATION

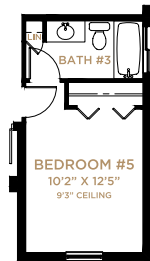


SPLENDIDO COLLECTION

CAPRI



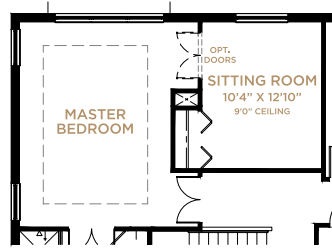
FIRST FLOOR



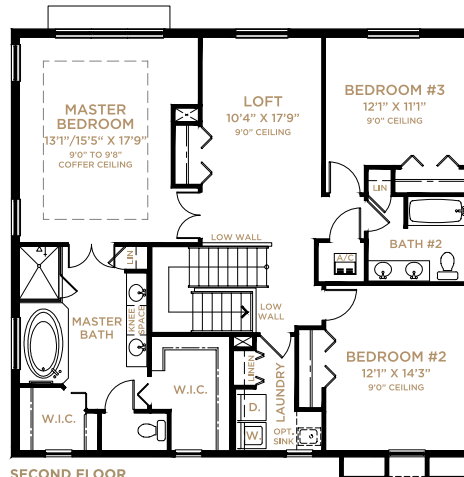
AVAILABLE BEDROOM #5



AVAILABLE MEDIA ROOM



AVAILABLE SITTING ROOM



SECOND FLOOR



AVAILABLE BEDROOM #4

CAPRI

First Floor	1,139
Second Floor	1,403
Total - Living	2,542
Garage	673
Covered Patio	133
Covered Entry	30
Total	3,378



SPLENDIDO COLLECTION

MIRADOR

4 Bedrooms, Loft, 3 Baths, 3-Car Garage



PALM BEACH ELEVATION



**PALM BEACH ELEVATION
(WITH BEDROOM #6)**



WEST INDIES ELEVATION

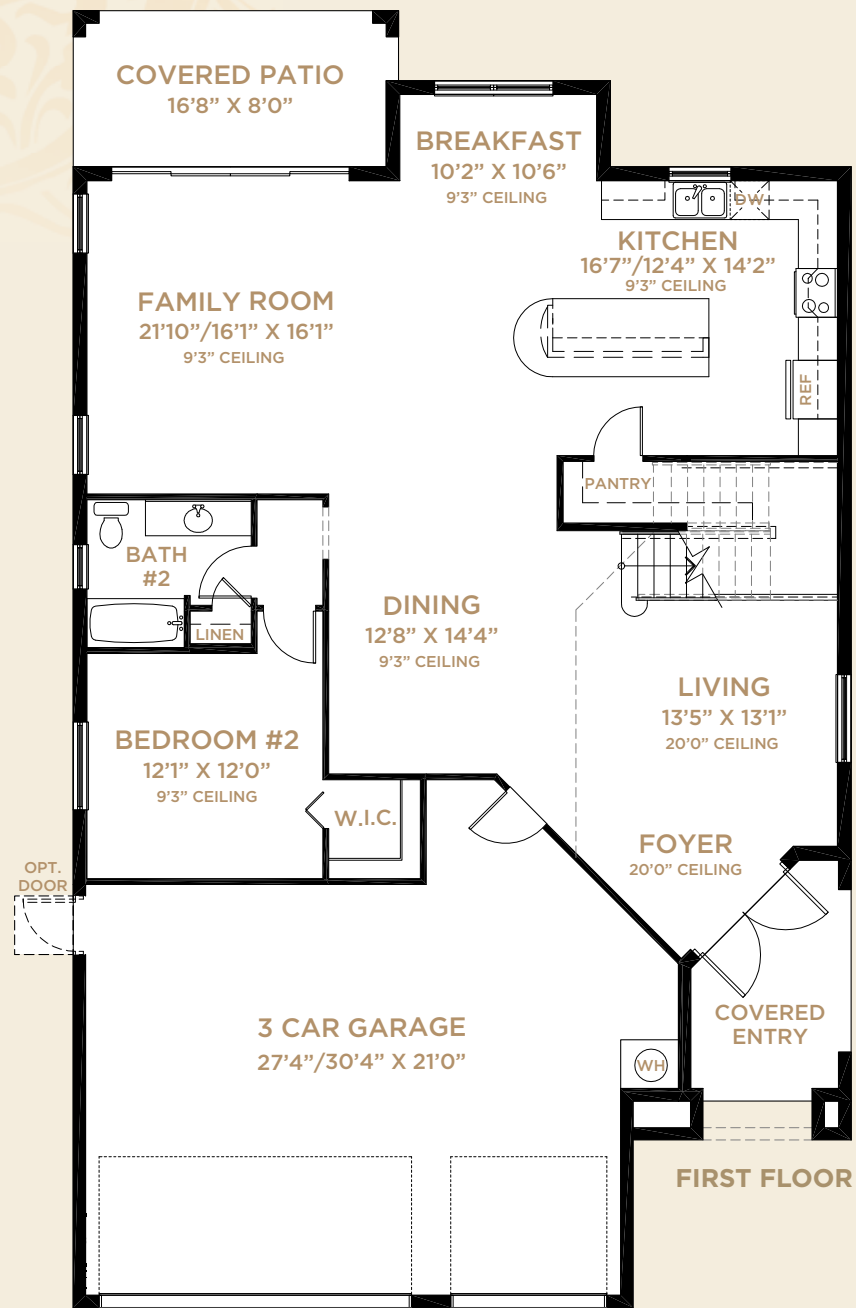


**WEST INDIES ELEVATION
(WITH BEDROOM #6)**

SPLENDIDO COLLECTION

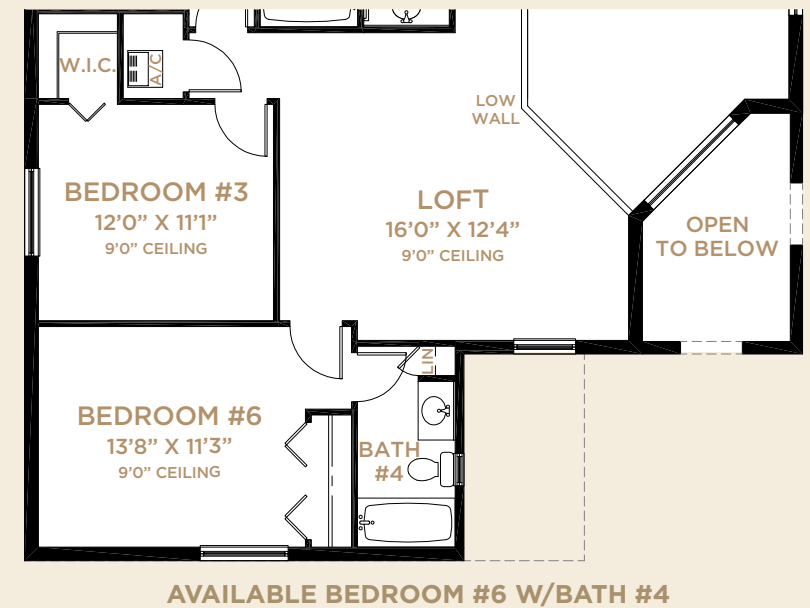
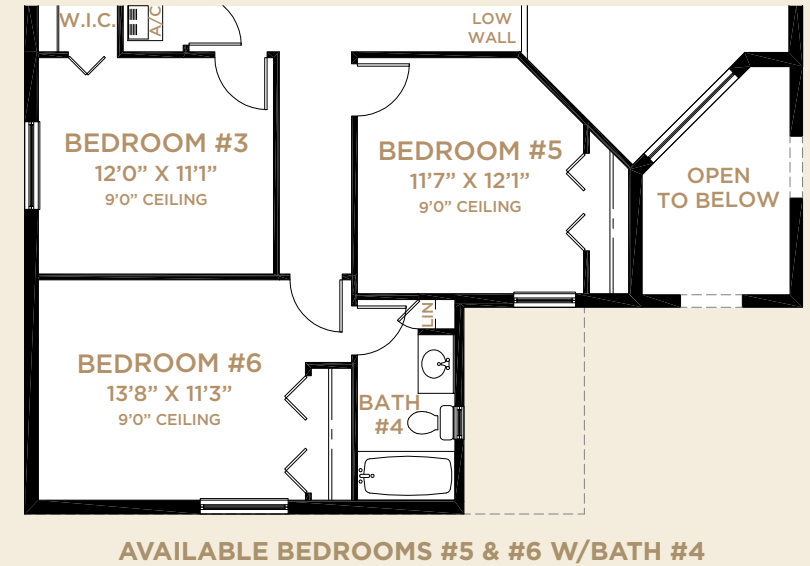
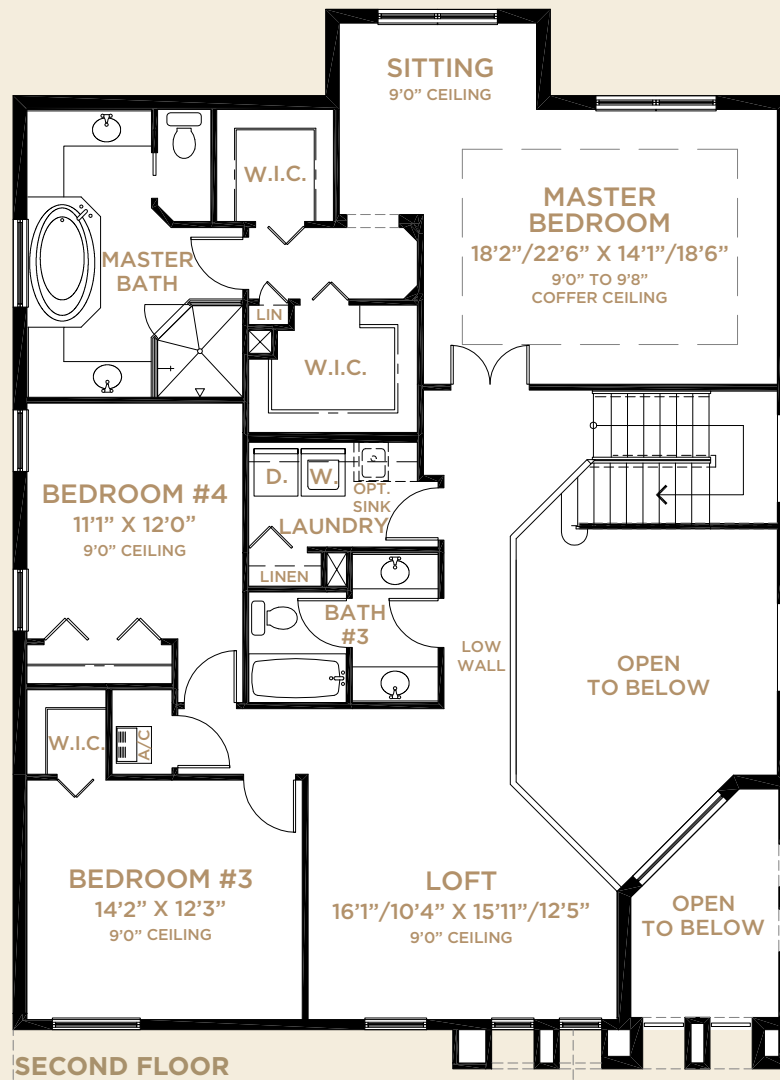
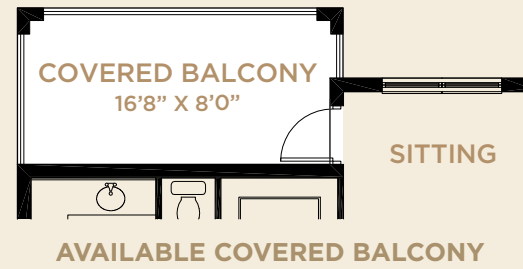
MIRADOR

4 Bedrooms, Loft, 3 Baths, 3-Car Garage



MIRADOR	
First Floor	1,492
Second Floor	1,569
Total - Living	3,061
Garage	676
Covered Patio	130
Covered Entry	86
Total	3,953

With Bedroom #6	
First Floor	1,492
Second Floor	1,811
Total - Living	3,303
Garage	676
Covered Patio	130
Covered Entry	86
Total	4,195





SPLENDIDO COLLECTION

TIARA

5 Bedrooms, Den, Loft, 5 Baths, 3-Car Garage



MISSION ELEVATION

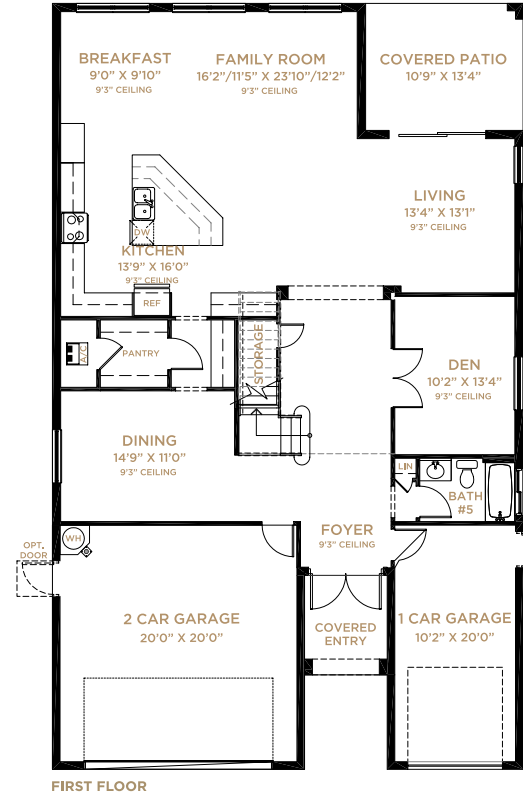
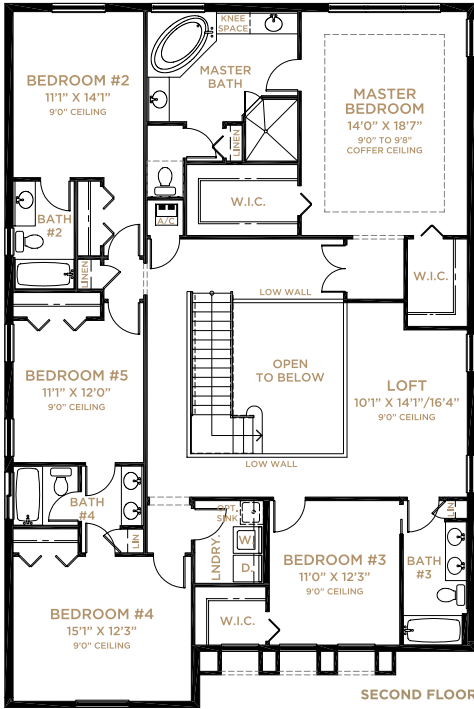


WEST INDIES ELEVATION



SPLENDIDO COLLECTION

TIARA



TIARA

First Floor	1,651
Second Floor	2,094
Total - Living	3,745
Garage	673
Covered Patio	143
Covered Entry	59
Total	4,620



PALAZZO COLLECTION

AMALFI

2 Bedrooms, Den, 2 1/2 Baths, 3-Car Garage



PALM BEACH ELEVATION

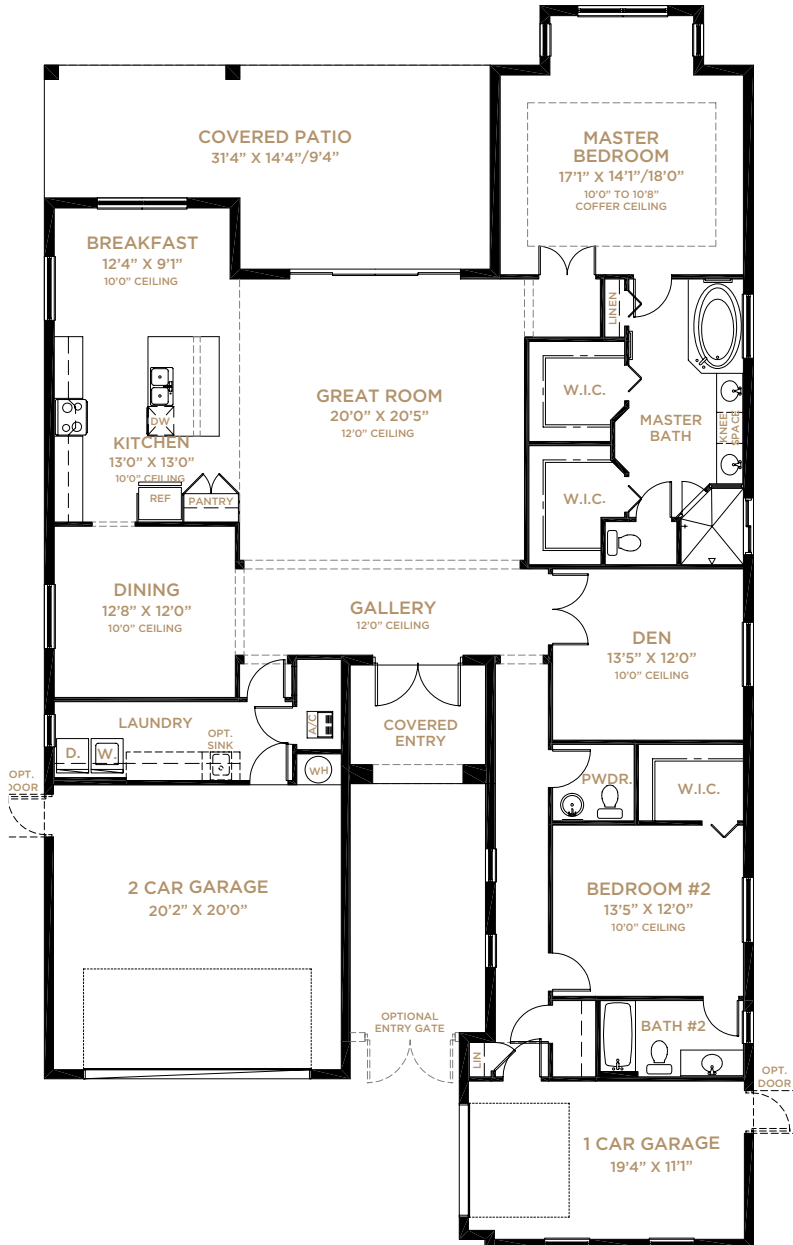


WEST INDIES ELEVATION

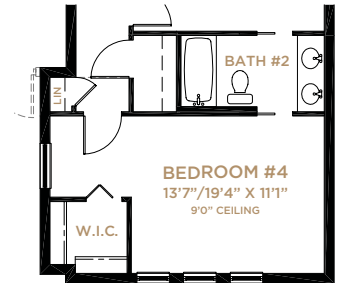


PALAZZO COLLECTION

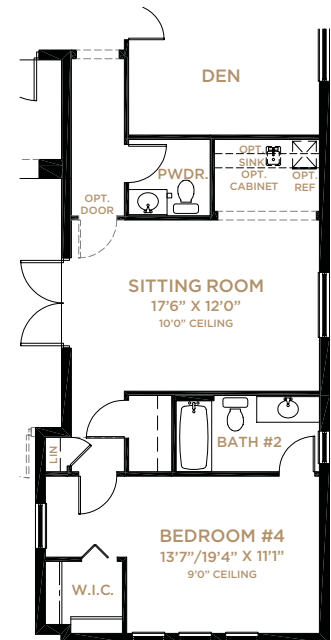
AMALFI



AVAILABLE BEDROOM #3



AVAILABLE BEDROOM #4



AVAILABLE BEDROOM #4 & SITTING ROOM

AMALFI

Total - Living	2,496
Garage	694
Covered Patio	380
Covered Entry	79
Total	3,649



PALAZZO COLLECTION

BRIENZA

4 Bedrooms, Den, 3 1/2 Baths, 3-Car Garage



PALM BEACH ELEVATION



PALM BEACH ELEVATION (WITH HOBBY ROOM)



MISSION ELEVATION



MISSION ELEVATION (WITH HOBBY ROOM)

OLYMPIA

PALAZZO COLLECTION

BRIENZA

4 Bedrooms, Den, 3 1/2 Baths, 3-Car Garage



BRIENZA	
Total - Living	2,947
Garage	581
Covered Patio	199
Covered Entry	41
Total	3,768

With Hobby Room	
Total - Living	2,947
2-Car Garage	375
Hobby Room	206
Covered Patio	199
Covered Entry	41
Total	3,768

AVAILABLE HOBBY ROOM

AVAILABLE BEDROOM #5

PALM BEACH ENTRY



PALAZZO COLLECTION

CALLISTA

4 Bedrooms, Den, 3 1/2 Baths, 4-Car Garage



PALM BEACH ELEVATION



**PALM BEACH ELEVATION
(WITH SITTING ROOM)**



WEST INDIES ELEVATION



**WEST INDIES ELEVATION
(WITH SITTING ROOM)**

PALAZZO COLLECTION

CALLISTA

4 Bedrooms, Den, 3 1/2 Baths, 4-Car Garage



CALLISTA	
First Floor	1,823
Second Floor	1,829
Total - Living	3,652
Garage	882
Covered Patio	312
Covered Entry	106
Total	4,952



PALAZZO COLLECTION

SERRANO

6 Bedrooms, Den, Loft, 5 1/2 Baths, 3-Car Garage



PALM BEACH ELEVATION

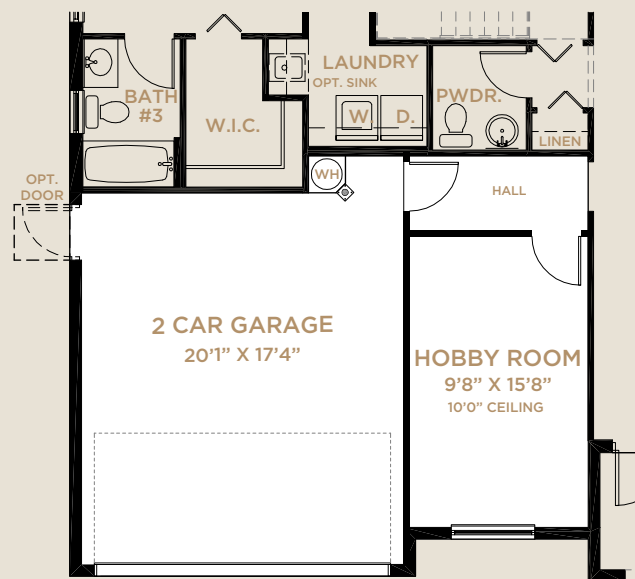


WEST INDIES ELEVATION

PALAZZO COLLECTION

SERRANO

6 Bedrooms, Den, Loft, 5 1/2 Baths, 3-Car Garage



SERRANO

First Floor	2,931
Second Floor	1,229
Total - Living	4,160
3-Car Garage	592
Covered Patio	199
Covered Entry	58
Total	5,009

With Hobby Room

First Floor	3,138
Second Floor	1,229
Total - Living	4,367
2-Car Garage	385
Covered Patio	199
Covered Entry	58
Total	5,009



PALAZZO COLLECTION

ST. TROPEZ

3-5 Bedrooms, 3-4 Baths, 2-3 Car Garage



MISSION ELEVATION



MISSION ELEVATION (WITH IN-LAW SUITE)



WEST INDIES ELEVATION



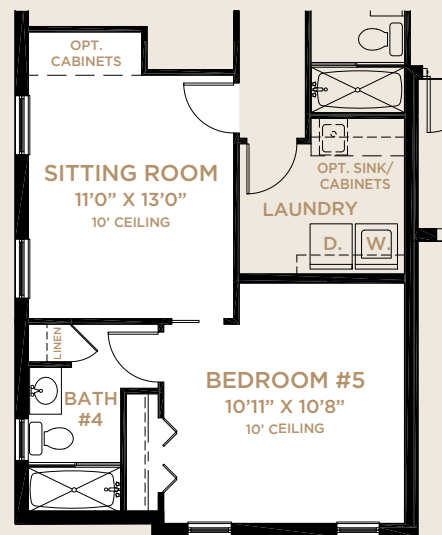
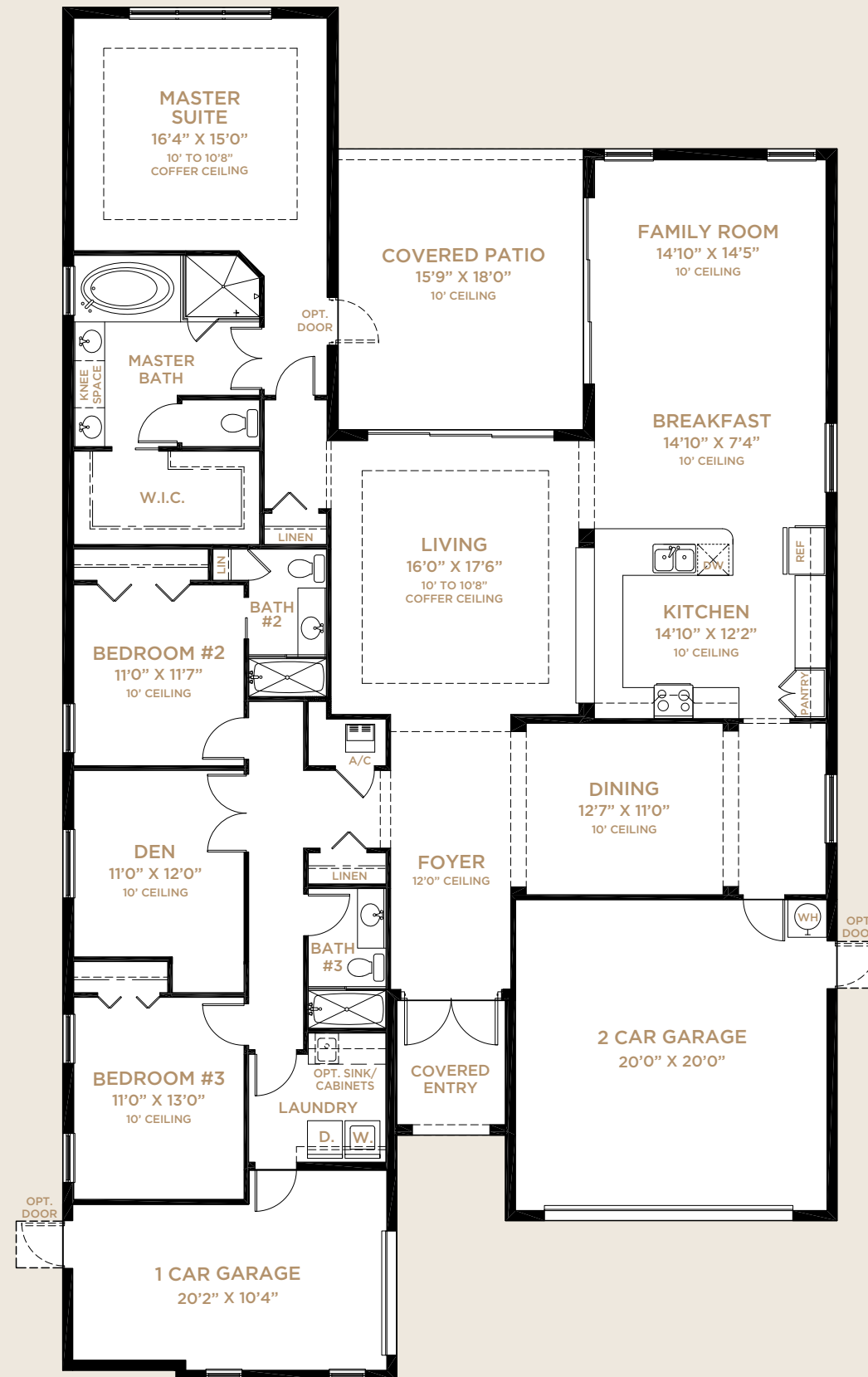
WEST INDIES ELEVATION (WITH IN-LAW SUITE)

OLYMPIA

PALAZZO COLLECTION

ST. TROPEZ

3-5 Bedrooms, 3-4 Baths, 2-3 Car Garage



AVAILABLE IN-LAW SUITE

St. TROPEZ

Total - Living	2,733
Garage	696
Covered Patio	285
Covered Entry	60
Total	3,774

With Available In-Law Suite

Total - Living	2,994
Garage	435
Covered Patio	285
Covered Entry	60
Total	3,774



AVAILABLE
BEDROOM #4

OLYMPIA

YOUR KITCHEN

- Dramatic gourmet kitchen featuring wood recessed panel cabinet doors with 42" upper cabinets
- Granite countertops with 1 1/2" built -up edge and 4" backsplash
- Matching designer cabinet pantry or walk-in pantry closet with close mesh ventilated shelving (per plan)
- Recessed lighting with energy-saving compact fluorescent light bulbs
- Stainless Steel **Whirlpool** appliances
- 25 cubic foot **Whirlpool** Energy Star® side-by-side refrigerator with in-door ice and water
- **Whirlpool** self-cleaning ceramic cooktop electric range
- Exterior vented **Whirlpool** microwave
- **Whirlpool** Energy Star® sound insulated automatic dishwasher
- Double compartment (50/50) undermount stainless steel sink
- Decorator selected stainless steel **Moen**® faucet with integrated pull-out sprayer
- **InSinkErator** Waste Disposal

YOUR OWNER'S SUITE AND BATHS

- Raised height vanities with recessed panel wood doors in master and secondary baths
- Custom cultured marble vanity tops with integral sinks
- **Mansfield** Pedestal sink in powder room

- **Mohawk**® 12"x12" ceramic tile floors and 8"x12" ceramic wall tile in wet areas of full baths
- Deluxe acrylic roman tub with ceramic tile surround and separate shower in master bath (per plan)
- Decorator selected **Moen**® brushed nickel faucets in all baths
- Full width oversized mirrors to 8' over vanities in master bath
- Decorative mirror in powder bath
- Full width mirrors over vanities in secondary baths with decorator lighting
- Water saving elongated water closets
- Coordinated bath & towel accessories
- Large walk-in closet(s) (per plan)
- Moisture resistant **DensShield**® backing shower walls and tub

YOUR MINTO

- Minto - over half a century of innovation, financial strength and integrity
- Award winning community, lifestyle and home designs
- Minto's nationally recognized construction quality
- Minto's exclusive **MasterCare**™ customer care program
- Personalized and convenient home mortgage and title services available thru FBC Mortgage & Founders Title Services
- Three-year **Whirlpool** Appliance warranty
- Ten-year structural warranty program



beinspired

It is understood by the purchaser that all furnishings, draperies, mirror work, wallpaper and decorator items shown in the models, are for display purposes only and are not included in the purchase price. Landscaping may vary as to maturity, specifications and number. Electrical, cable TV, data and phone outlets may vary in quantity, type and location from what is shown in the model. Artist's renderings, all dimensions, specifications and features are approximate and subject to change without notice. CBC 1258779, CGC 1505726, CGC 1519880. © 2012 Minto Communities, LLC All Rights Reserved. 5/12



THE SPLENDIDO & PALAZZO COLLECTION

INCLUDED PREMIUM FEATURES



OLYMPIA

mintogreen

Minto makes living green simple.

For over 50 years Minto has been demonstrating how innovative design can contribute to a healthier planet and improve comfort for our customers.

Minto is committed to creating quality green spaces that inspire our customers and employees to live green.



YOUR OLYMPIA LIFESTYLE

- Premier Wellington location
- Top rated schools
- Convenient to shopping, services, employment & transportation - in the heart of it all
- Great area with restaurants, Whole Foods, shops and services
- Stunning community master plan with lakes, landscaped open areas, nearby retail shopping
- Neighborhood parks & trails

YOUR OLYMPIA NEIGHBORHOOD

- Wellington's premier community
- Prestigious entry features, landscaping and 4 gated entries
- Beautiful master-planned pedestrian-friendly community with lakes, preserves, landscaped open areas and sidewalks on both sides of the street
- Exquisite Club and Recreation Center with:
 - State-of-the-art fitness center
 - Lanai for social gatherings
 - Resort-style swimming pool with Shade Cabanas
 - Waterworks area
 - Tennis Courts
 - Basketball Courts
 - Volleyball
 - Community/Club Room
 - Teen Room
 - Multimedia room with television, computer stations & library
 - Expansive outdoor terrace
 - Activity room with card tables
 - Wet bar & Coffee station
 - Playground
- Decorative street lighting

YOUR ENERGY SAVING FEATURES

- Neighborhood, home design and construction for energy efficiency & sustainability
-  - Energy Star® Partner
-  - FPL® BuildSmart®
- Energy efficient double pane insulated low-emissivity windows, sliders and glass doors for improved energy performance, comfort and savings
- High efficiency **Carrier**® central air conditioning & heating
- **Honeywell**® 7-day programmable thermostat
- Environmentally safe R410A refrigerant
- Improved indoor air quality for your health through use of fresh air intake and insulated sealed duct air conditioning distribution system, efficient air filters, carbon monoxide detectors, low volatile organic compound (VOC) carpet, zero VOC and low VOC paints and exterior vented microwave
- Energy efficient 50 or 80-gallon quick-recovery **Rheem**® water heater (per plan)
- Energy Star® rated **Whirlpool** refrigerator and dishwasher
- Energy Star® rated **Broan**® bath exhaust fans
- Energy saving compact fluorescent light bulbs
- Architecturally accented, 8' tall **Plastpro**™ insulated fiberglass double entry doors, or single with side light, for extended weather resistant life (per plan)
- R-30 insulated ceiling & R-4.1 exterior walls
- **Moen**® water saving plumbing fixtures
- Luxurious **Mohawk**® stain-resistant, environmentally friendly low VOC carpeting with high performance carpet cushion
- 25 cubic foot **Whirlpool** Energy Star® side-by-side refrigerator with in-door ice and water
- Exterior vented **Whirlpool** microwave
- **Whirlpool** Energy Star® sound insulated automatic dishwasher
- Water saving elongated water closets

YOUR HOME

- Inspired elevations with elegant architectural appointments
- Covered entry and patio
- Professionally designed landscaping and fully sodded homesite
- Elegant brick paver driveway, entry walkway and covered patio
- Decorative garage coach lights
- **Color Wheel**® Flex Lox exterior paint for lasting color retention and weather protection
- **Hanson**® Regal concrete roof tiles
- **Schlage**® satin nickel handleset
- **Schlage**® satin nickel knobs on interior doors
- **Schlage**® entry deadbolt lock & door viewer
- Waterproof exterior electrical outlets and exterior hose connection(s) for your convenience
- Entry door chime
- Automatic irrigation system on entire lot utilizing lake water to reduce potable water demand

YOUR PEACE OF MIND

- Design & construction in accordance with rigorous wind resistive requirements of Florida Building Code
- Steel-reinforced monolithic concrete foundation with vapor barrier
- Professionally engineered reinforced concrete block first floor and second floor walls where possible
- Smoke/carbon monoxide detectors at each bedroom for your peace of mind
- Security system with 1 **Honeywell**® keypad and contacts on all operable windows and doors (excludes exterior garage doors)
- 8' tall tempered sliding glass doors for your safety
- Professionally engineered floor and roof truss systems

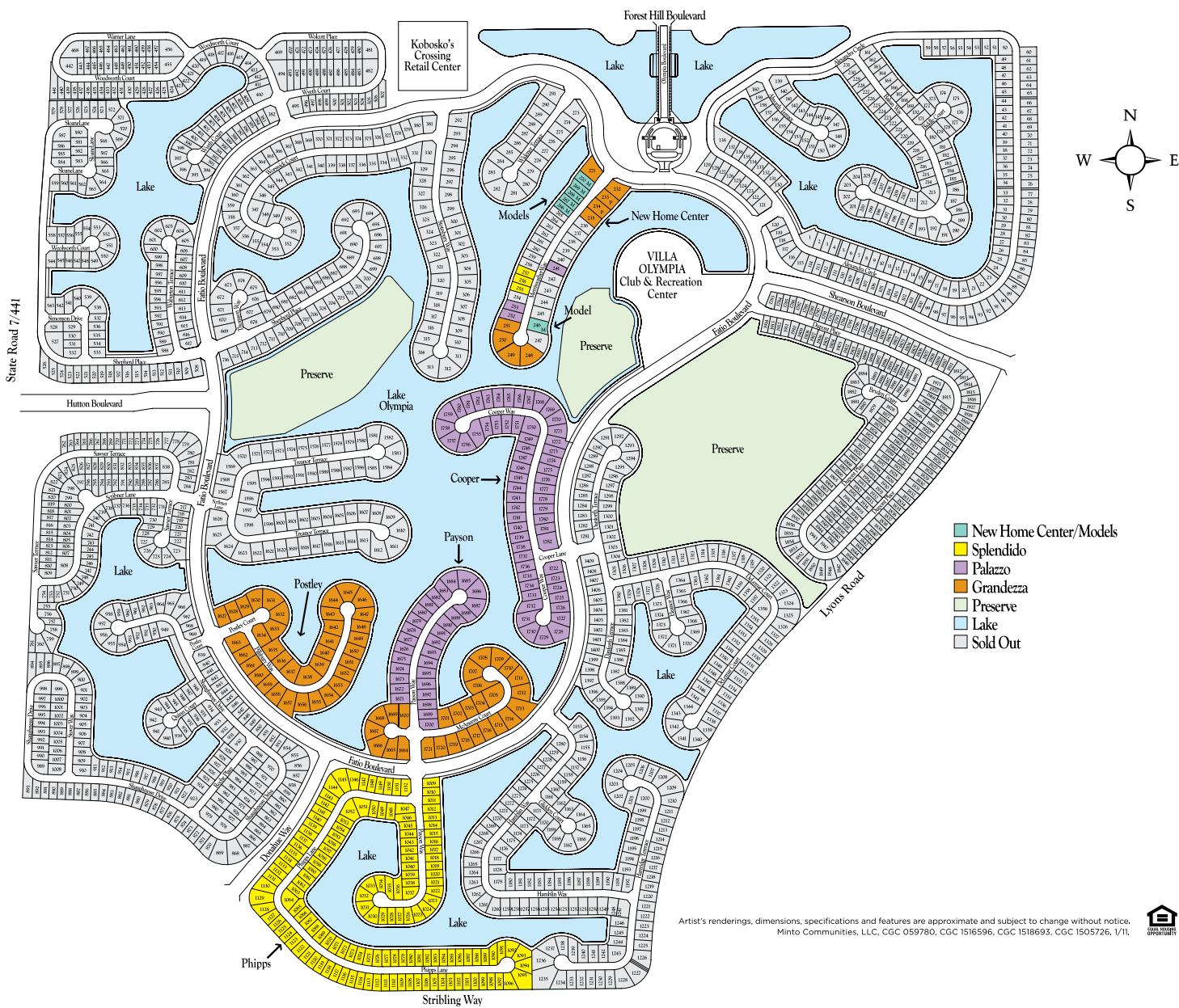
- Impact resistant embossed steel garage door
- **Sentricon**® termite baiting system
- **Taexx**® pest control systems

WITHIN YOUR HOME

- Private 2- and 3-car garages with **Liftmaster**® automatic opener and transmitters (per plan)
- Dramatic 9' & 10' ceiling heights on first floor (per plan)
- 18" **Mohawk**® ceramic tile throughout the main floor living areas of your home (per plan)
- **Whirlpool** super capacity washer & dryer
- **On-Q** High speed structured wiring network - certified Cat-5E data lines and RG-6 quad shield coaxial cable
- Luxurious **Mohawk**® stain-resistant, environmentally friendly low VOC carpeting with high performance carpet cushion
- Knockdown textured drywall finish on ceilings
- Light orange peel finish on interior walls
- **Color Wheel**® high quality interior paint - zero volatile organic compound (VOC) on walls and low VOC semi-gloss finish on doors and trim
- Decora-style light switches
- 6-panel interior doors
- **Schlage**® satin nickel knobs on interior doors
- Sculpted colonial wood baseboard and casing
- Air-conditioned, lighted walk-in closets
- **Dupont**® solid surface window sills
- Pre-wired for cable TV and ceiling fans in family/great room & bedrooms per plan. Pre-wired for telephone in kitchen, master bedrooms, den and family room (per plan)
- Epoxy coated steel ventilated closet shelving



SITEPLAN



Artist's renderings, dimensions, specifications and features are approximate and subject to change without notice. Minto Communities, LLC, CGC 059780, CGC 1516596, CGC 1518693, CGC 1505726, 1/11.



OLYMPIA